



DAIRA   
BY BIOGRAPI



MASTER PLAN

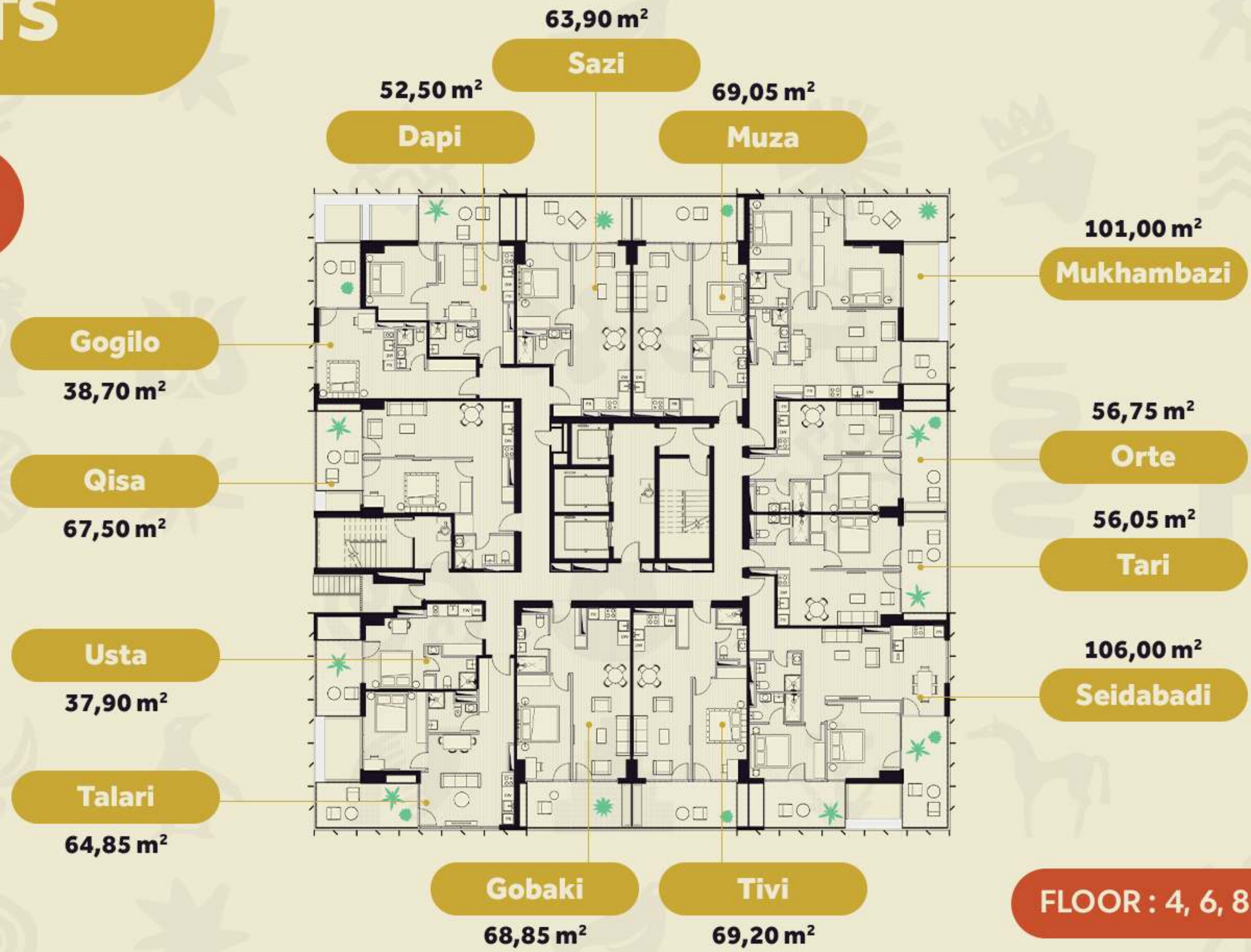
The Prosecution Service of Georgia

DAIRA BY BIOGRAPI



APARTMENTS

TYPE 1



APARTMENTS



TYPE 2

65,70 m²

Menave

65,80 m²

Lazati

81,80 m²

Eldorado

Palavsani

82,45 m²

Rindi

68,05 m²

60,60 m²

Lkheni

60,60 m²

Dori

Ruduni

91,00 m²

83,80 m²

Banovani

Baasi

70,95 m²

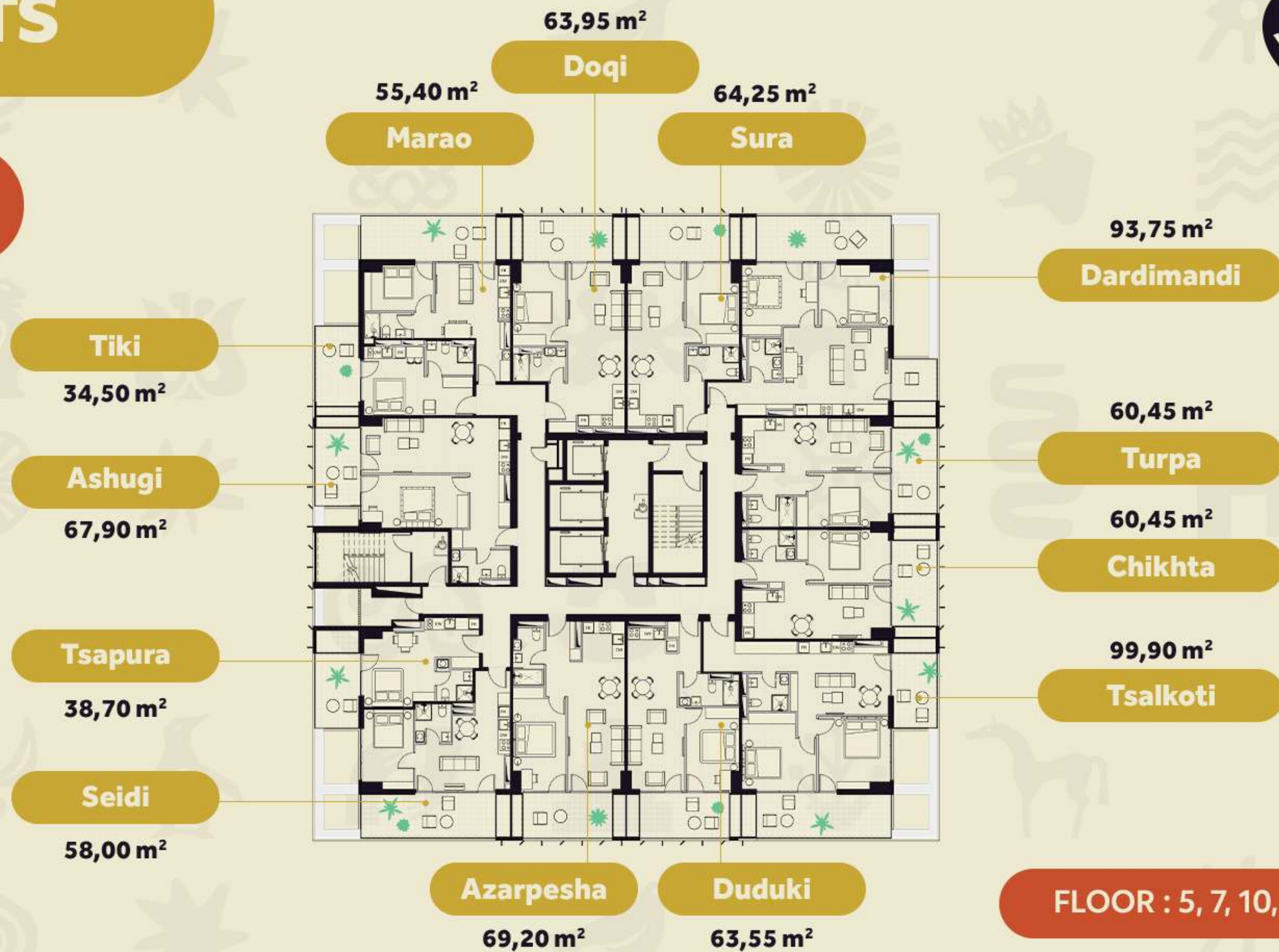
Takara

65,30 m²

FLOOR : 11, 15, 16, 21, 22, 23

APARTMENTS

TYPE 3



APARTMENTS



TYPE 4

Taverna

102,80 m²

Leli

67,50 m²

Tuta

39,60 m²

Paetoni

64,10 m²

48,35 m²

Tsapi

53,85 m²

Amqari

102,85 m²

Punduki

45,30 m²

Proza

45,05 m²

Poezia

108,00 m²

Bohema

Khelada

53,60 m²

Koka

53,60 m²

FLOOR : 9, 13, 18, 19, 25, 26

APARTAMENT TYPE

Tiki

STUDIO

Total Area : **34.50 sq.m**

Common Space: **18.09 sq.m**

WC: **4.45 sq.m**

Terrace: **11.60 sq.m**

View: **North-West**



APARTAMENT TYPE

Usta

STUDIO

Total Area : **37.90 sq.m**

Common Space: **20.05 sq.m**

WC: **4.66 sq.m**

Terrace: **12.60 sq.m**

View: **West**



APARTAMENT TYPE

Gogilo

STUDIO

Total Area : **38.70 sq.m**

Common Space: **26.76 sq.m**

WC: **4.23 sq.m**

Terrace: **8.10 sq.m**

View: **North-West**



APARTAMENT TYPE

Tsapura

STUDIO

Total Area : **38.70 sq.m**

Common Space: **21.86 sq.m**

WC: **3.78 sq.m**

Terrace: **12.60 sq.m**

View: **West**



APARTAMENT TYPE

Tuta

STUDIO

Total Area : **39.60 sq.m**

Common Space: **21.63 sq.m**

WC: **4.70 sq.m**

Terrace: **12.60 sq.m**

View: **West**



APARTAMENT TYPE

Poezia

1 BEDROOM

Total Area : **45.05 sq.m**

Hall: **4.62 sq.m**

Living Room / Kitchen: **19.06 sq.m**

Bedroom: **9.00 sq.m**

WC: **3.51 sq.m**

Terrace: **7.85 sq.m**

View: **East**



APARTAMENT TYPE

Proza

1 BEDROOM

Total Area : **45.30 sq.m**

Hall: **4.40 sq.m**

Living Room / Kitchen: **18.81 sq.m**

Bedroom: **9.00 sq.m**

WC: **4.19 sq.m**

Terrace: **7.80 sq.m**

View: **East**



APARTAMENT TYPE

Tsapi

1 BEDROOM

Total Area : **48.35 sq.m**

Hall: **2.70 sq.m**

Living Room / Kitchen: **21.73 sq.m**

Bedroom: **9.00 sq.m**

WC: **4.84 sq.m**

Terrace: **9.00 sq.m**

View: **North**



APARTAMENT TYPE

Dapi

1 BEDROOM

Total Area : **52.50 sq.m**

Hall: **4.10 sq.m**

Living Room / Kitchen: **17.30 sq.m**

Bedroom: **13.35 sq.m**

WC: **4.37 sq.m**

Terrace: **12.60 sq.m**

View: **North**



APARTAMENT TYPE

Koka

1 BEDROOM

Total Area : **53.60 sq.m**

Hall: **4.23 sq.m**

Living Room / Kitchen: **21.82 sq.m**

Bedroom: **12.58 sq.m**

WC: **4.56 sq.m**

Terrace: **9.00 sq.m**

View: **South**



APARTAMENT TYPE

Khelada

1 BEDROOM

Total Area : **53.60 sq.m**

Hall: **5.00 sq.m**

Living Room / Kitchen: **21.54 sq.m**

Bedroom: **12.00 sq.m**

WC: **5.10 sq.m**

Terrace: **9.00 sq.m**

View: **South**



APARTAMENT TYPE

Amqari

1 BEDROOM

Total Area : **53.85 sq.m**

Hall: **5.42 sq.m**

Living Room / Kitchen: **22.36 sq.m**

Bedroom: **11.00 sq.m**

WC: **4.87 sq.m**

Terrace: **9.00 sq.m**

View: **North-East**



APARTAMENT TYPE

Marao

1 BEDROOM

Total Area : **55.40 sq.m**

Hall: **4.13 sq.m**

Living Room / Kitchen: **18.00 sq.m**

Bedroom: **10.00 sq.m**

WC: **3.70 sq.m**

Terrace: **19.50 sq.m**

View: **North**



APARTAMENT TYPE

Tari

1 BEDROOM

Total Area : **56.05 sq.m**

Hall: **5.43 sq.m**

Living Room / Kitchen: **18.95 sq.m**

Bedroom: **12.03 sq.m**

WC: **4.31 sq.m**

Terrace: **14.00 sq.m**

View: **East**



APARTAMENT TYPE

Orte

1 BEDROOM

Total Area : **56.75 sq.m**

Hall: **5.38 sq.m**

Living Room / Kitchen: **18.75 sq.m**

Bedroom: **12.19 sq.m**

WC: **4.75 sq.m**

Terrace: **14.35 sq.m**

View: **East**



APARTAMENT TYPE

Seidi

1 BEDROOM

Total Area : **58.00 sq.m**

Hall: **3.15 sq.m**

Living Room / Kitchen: **19.16 sq.m**

Bedroom: **11.60 sq.m**

WC: **3.85 sq.m**

Terrace: **19.50 sq.m**

View: **South-West**



APARTAMENT TYPE

Turpa

1 BEDROOM

Total Area : **60.45 sq.m**

Hall: **4.59 sq.m**

Living Room / Kitchen: **22.01 sq.m**

Bedroom: **13.81 sq.m**

WC: **4.20 sq.m**

Terrace: **14.40 sq.m**

View: **East**



APARTAMENT TYPE

Chikhta

1 BEDROOM

Total Area : **60.45 sq.m**

Hall: **4.62 sq.m**

Living Room / Kitchen: **22.48 sq.m**

Bedroom: **13.70 sq.m**

WC: **3.95 sq.m**

Terrace: **14.40 sq.m**

View: **East**



APARTAMENT TYPE

Lkheni

1 BEDROOM

Total Area : **60.60 sq.m**

Hall: **4.50 sq.m**

Living Room / Kitchen: **22.06 sq.m**

Bedroom: **13.95 sq.m**

WC: **4.30 sq.m**

Terrace: **14.40 sq.m**

View: **East**



APARTAMENT TYPE

Dori

1 BEDROOM

Total Area : **60.60 sq.m**

Hall: **4.13 sq.m**

Living Room / Kitchen: **22.76 sq.m**

Bedroom: **13.78 sq.m**

WC: **4.30 sq.m**

Terrace: **14.40 sq.m**

View: **East**



APARTAMENT TYPE

Duduki

1 BEDROOM

Total Area : **63.55 sq.m**

Hall: **3.81 sq.m**

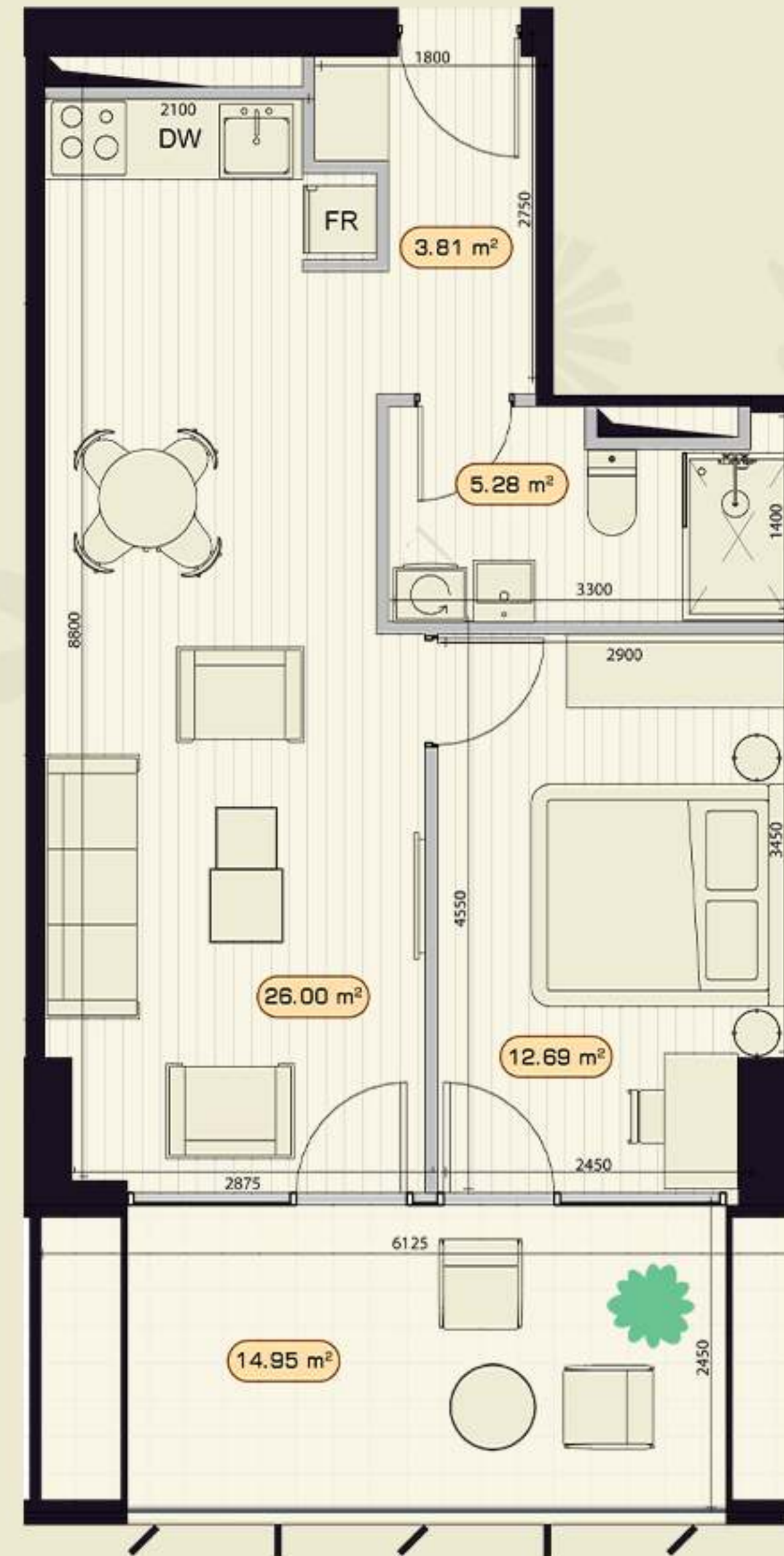
Living Room / Kitchen: **26.00 sq.m**

Bedroom: **12.69 sq.m**

WC: **5.28 sq.m**

Terrace: **14.95 sq.m**

View: **South**



APARTAMENT TYPE

Sazi

1 BEDROOM

Total Area : **63.90 sq.m**

Hall: **4.22 sq.m**

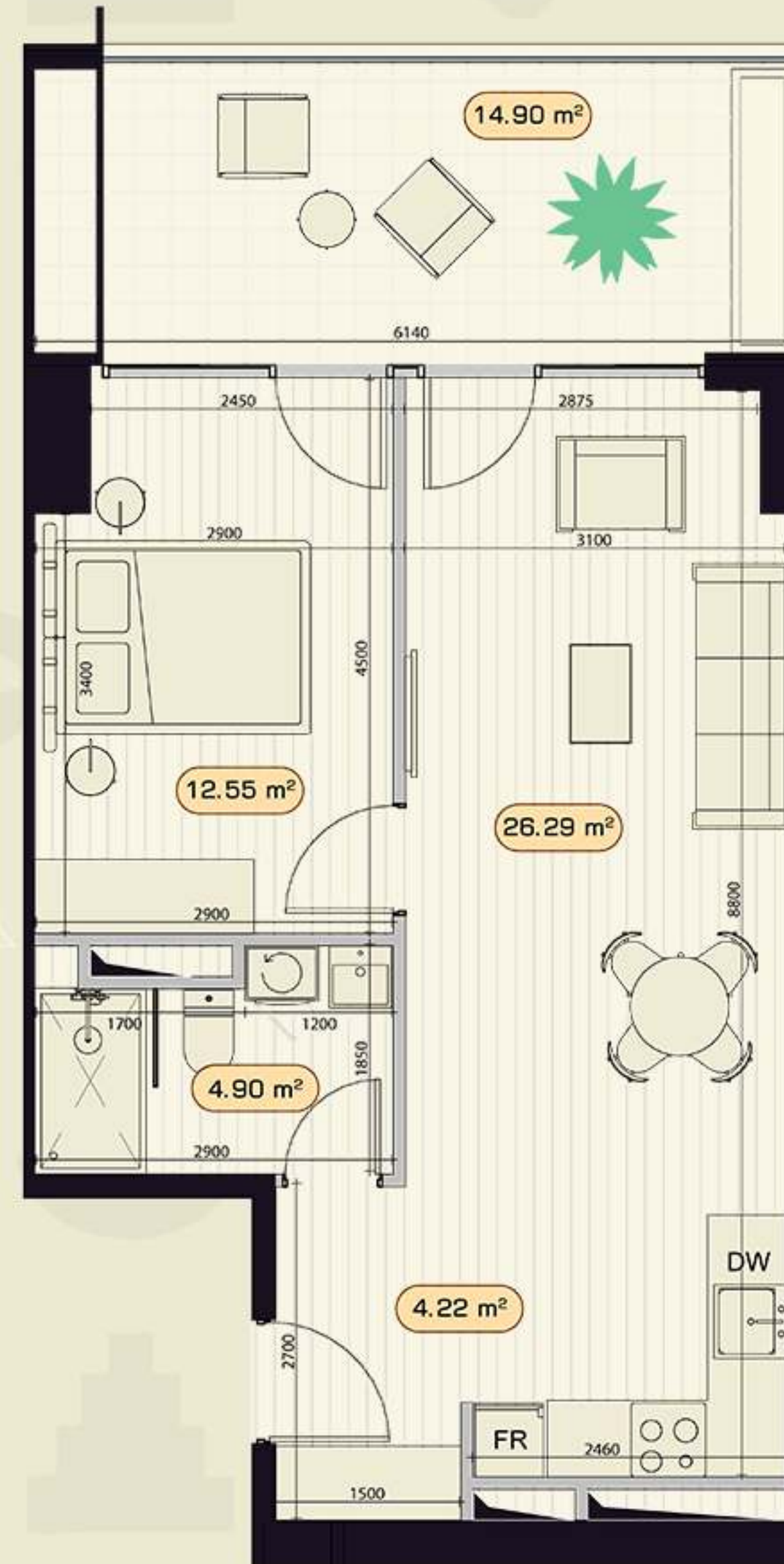
Living Room / Kitchen: **26.29 sq.m**

Bedroom: **12.55 sq.m**

WC: **4.90 sq.m**

Terrace: **14.90 sq.m**

View: **North-East**



APARTAMENT TYPE

Doqi

1 BEDROOM

Total Area : **63.95 sq.m**

Hall: **3.74 sq.m**

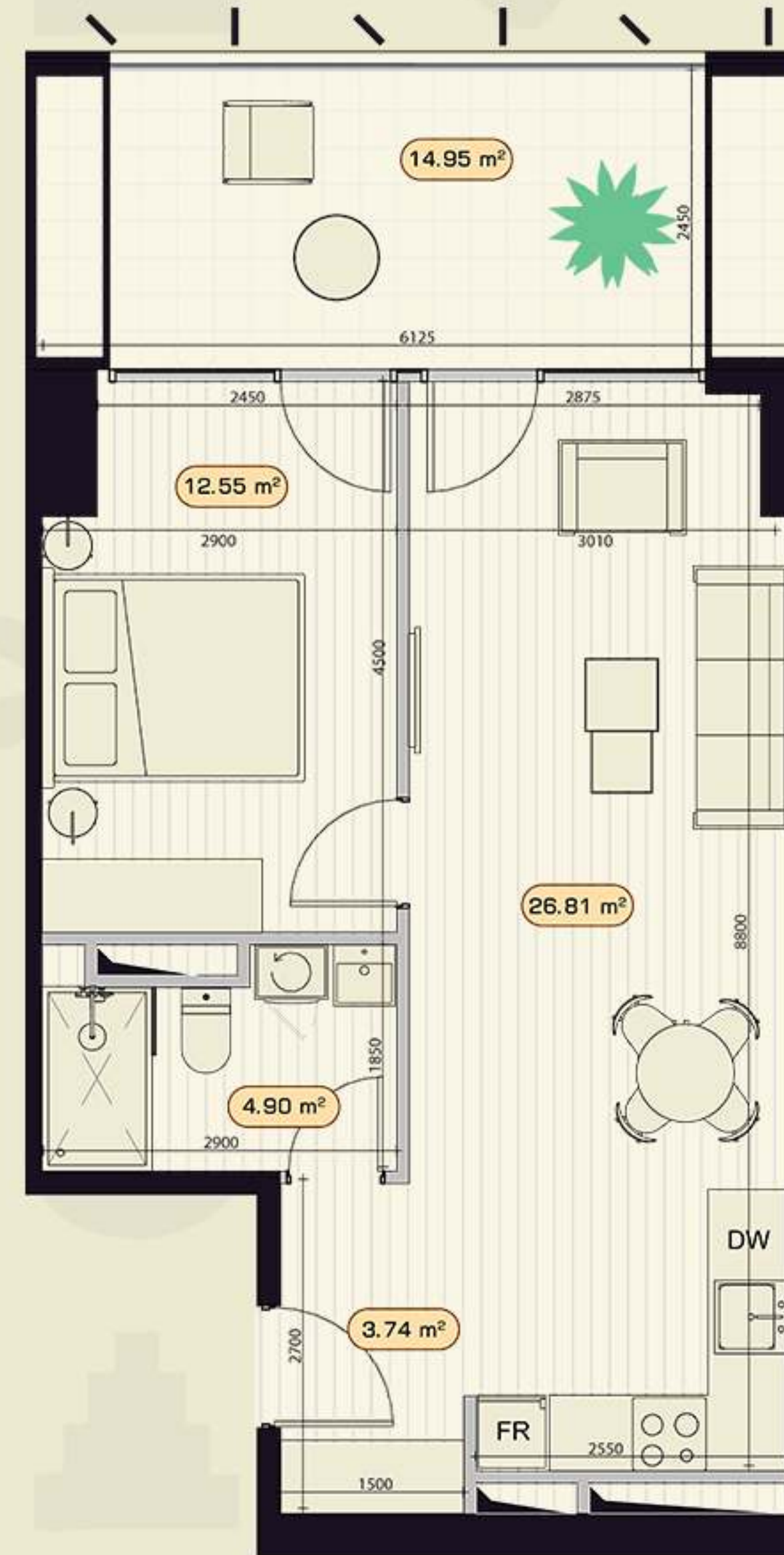
Living Room / Kitchen: **26.81 sq.m**

Bedroom: **12.55 sq.m**

WC: **4.90 sq.m**

Terrace: **14.95 sq.m**

View: **North-East**



APARTAMENT TYPE

Paetoni

1 BEDROOM

Total Area : **64.10 sq.m**

Hall: **6.67 sq.m**

Living Room / Kitchen: **24.26 sq.m**

Bedroom: **12.81 sq.m**

WC: **4.80 sq.m**

Terrace: **13.60 sq.m**

View: **South-West**



APARTAMENT TYPE

Sura

1 BEDROOM

Total Area : **64.25 sq.m**

Hall: **3.82 sq.m**

Living Room / Kitchen: **26.56 sq.m**

Bedroom: **12.41 sq.m**

WC: **5.21 sq.m**

Terrace: **14.65 sq.m**

View: **North-East**



APARTAMENT TYPE

Talari

1 BEDROOM

Total Area : **64.85 sq.m**

Hall: **8.64 sq.m**

Living Room / Kitchen: **22.97 sq.m**

Bedroom: **13.85 sq.m**

WC: **4.88 sq.m**

Terrace: **13.65 sq.m**

View: **South-West**



APARTAMENT TYPE

Takara

1 BEDROOM

Total Area : **65.30 sq.m**

Hall: **3.91 sq.m**

Living Room / Kitchen: **25.31 sq.m**

Bedroom: **12.78 sq.m**

WC: **5.28 sq.m**

Terrace: **16.55 sq.m**

View: **South**

DAIRA
BY BIOGRAP I



APARTAMENT TYPE

Menave

1 BEDROOM

Total Area : **65.70 sq.m**

Hall: **3.65 sq.m**

Living Room / Kitchen: **26.61 sq.m**

Bedroom: **12.64 sq.m**

WC: **4.89 sq.m**

Terrace: **16.55 sq.m**

View: **North**



APARTAMENT TYPE

Lazati

1 BEDROOM

Total Area : **65.80 sq.m**

Hall: **3.35 sq.m**

Living Room / Kitchen: **27.01 sq.m**

Bedroom: **12.50 sq.m**

WC: **5.21 sq.m**

Terrace: **16.55 sq.m**

View: **North-East**



APARTAMENT TYPE

Leli

1 BEDROOM

Total Area : **67.50 sq.m**

Hall: **8.91 sq.m**

Living Room / Kitchen: **23.91 sq.m**

Bedroom: **16.37 sq.m**

WC: **5.40 sq.m**

Terrace: **11.30 sq.m**

View: **North-West**



APARTAMENT TYPE

Ashugi

1 BEDROOM

Total Area : **67.90 sq.m**

Hall: **9.43 sq.m**

Living Room / Kitchen: **23.73 sq.m**

Bedroom: **16.36 sq.m**

WC: **5.32 sq.m**

Terrace: **11.70 sq.m**

View: **North-West**



APARTAMENT TYPE

Rindi

1 BEDROOM

Total Area : **68.05 sq.m**

Hall: **9.14 sq.m**

Living Room / Kitchen: **23.79 sq.m**

Bedroom: **16.72 sq.m**

WC: **5.32 sq.m**

Terrace: **11.70 sq.m**

View: **North-West**



APARTAMENT TYPE

Gobaki

1 BEDROOM

Total Area : **68.85 sq.m**

Hall: **5.16 sq.m**

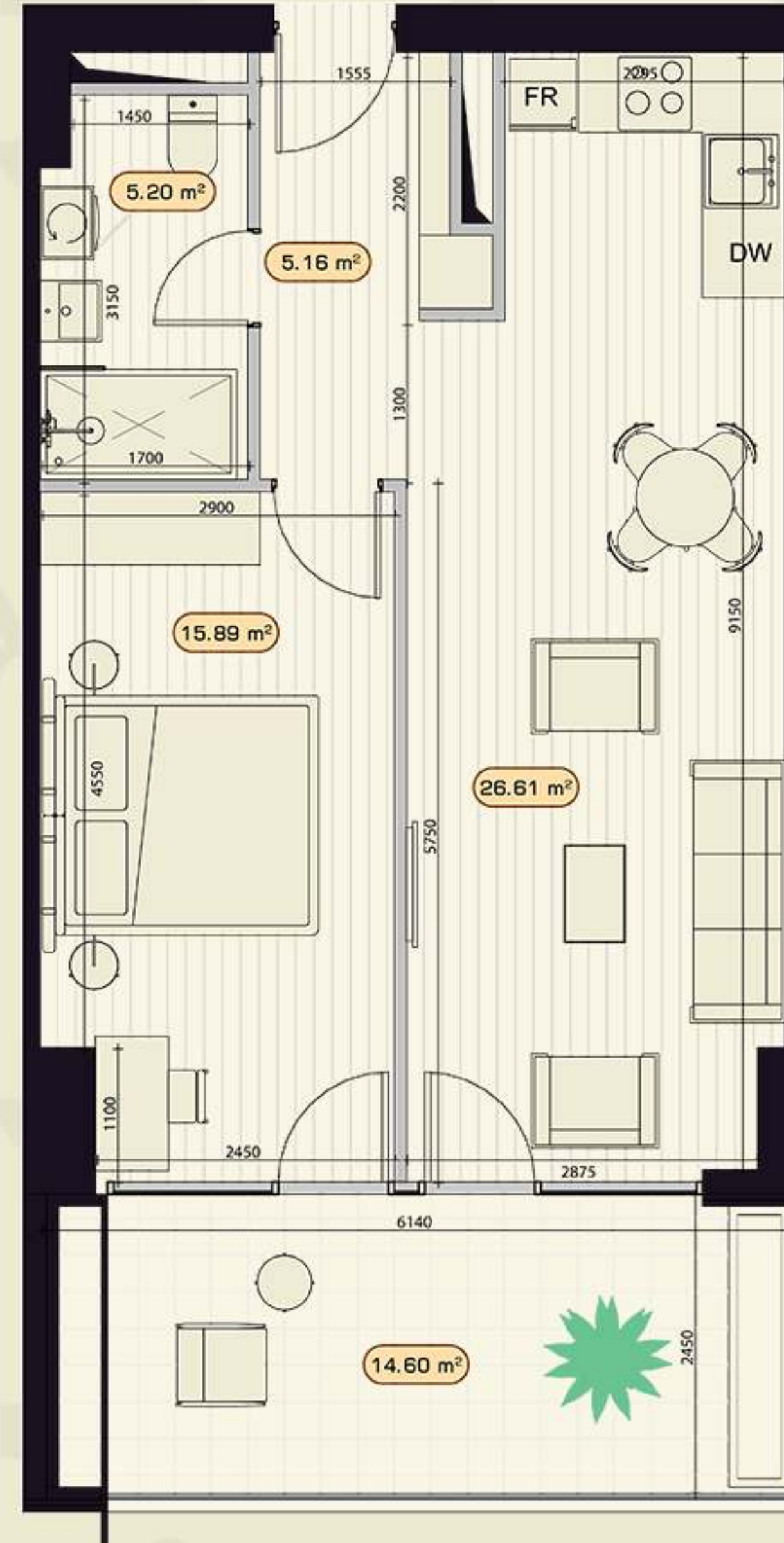
Living Room / Kitchen: **26.61 sq.m**

Bedroom: **15.89 sq.m**

WC: **5.20 sq.m**

Terrace: **14.60 sq.m**

View: **South**



APARTAMENT TYPE

Muza

1 BEDROOM

Total Area : **69.05 sq.m**

Hall: **6.20 sq.m**

Living Room / Kitchen: **27.23 sq.m**

Bedroom: **14.14 sq.m**

WC: **5.65 sq.m**

Terrace: **14.55 sq.m**

View: **North-East**



APARTAMENT TYPE

Tivi

1 BEDROOM

Total Area : **69.20 sq.m**

Hall: **6.30 sq.m**

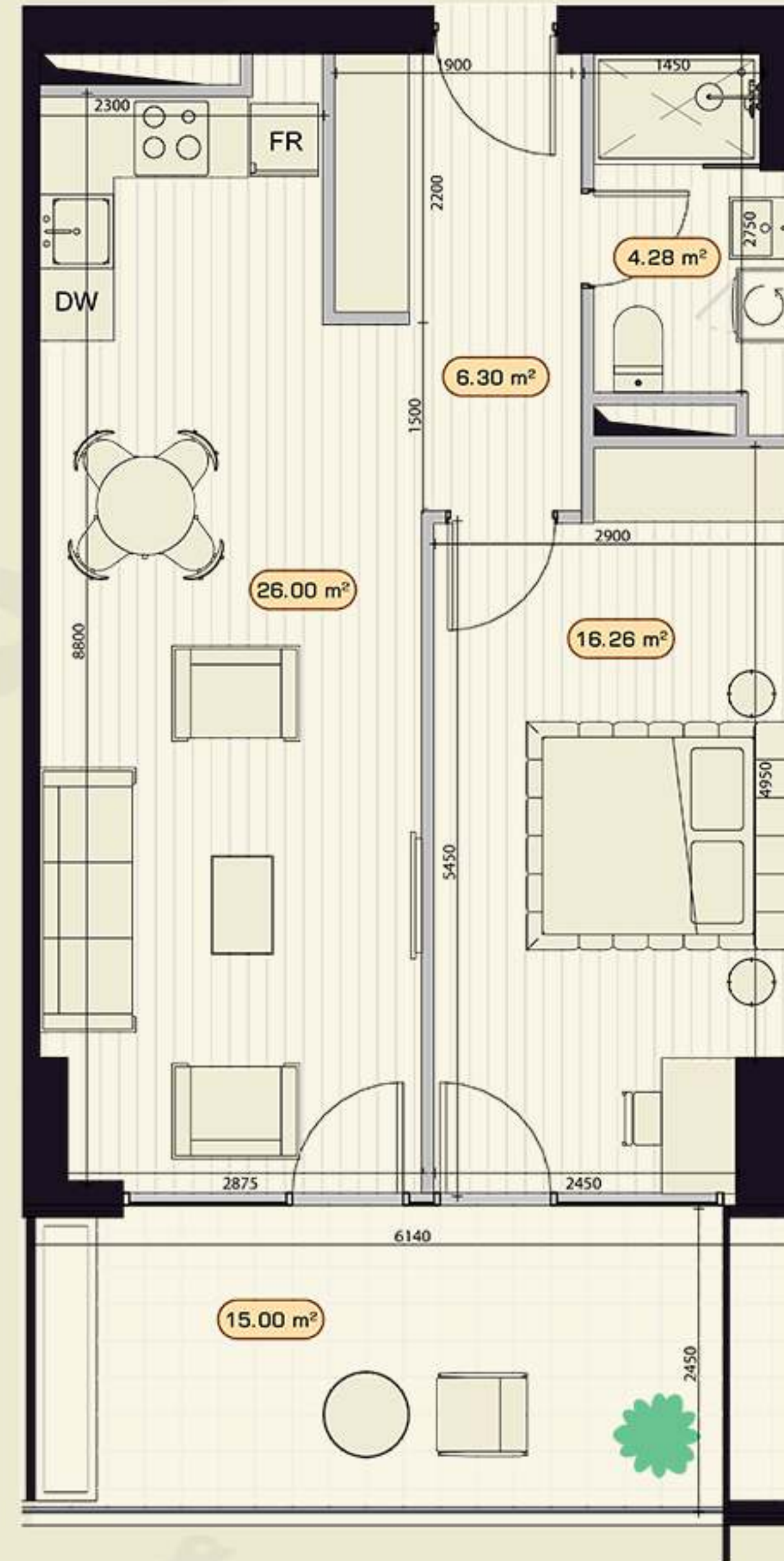
Living Room / Kitchen: **26.00 sq.m**

Bedroom: **16.26 sq.m**

WC: **4.28 sq.m**

Terrace: **15.00 sq.m**

View: **South**



APARTAMENT TYPE

Azarpesha

1 BEDROOM

Total Area : **69.20 sq.m**

Hall: **6.00 sq.m**

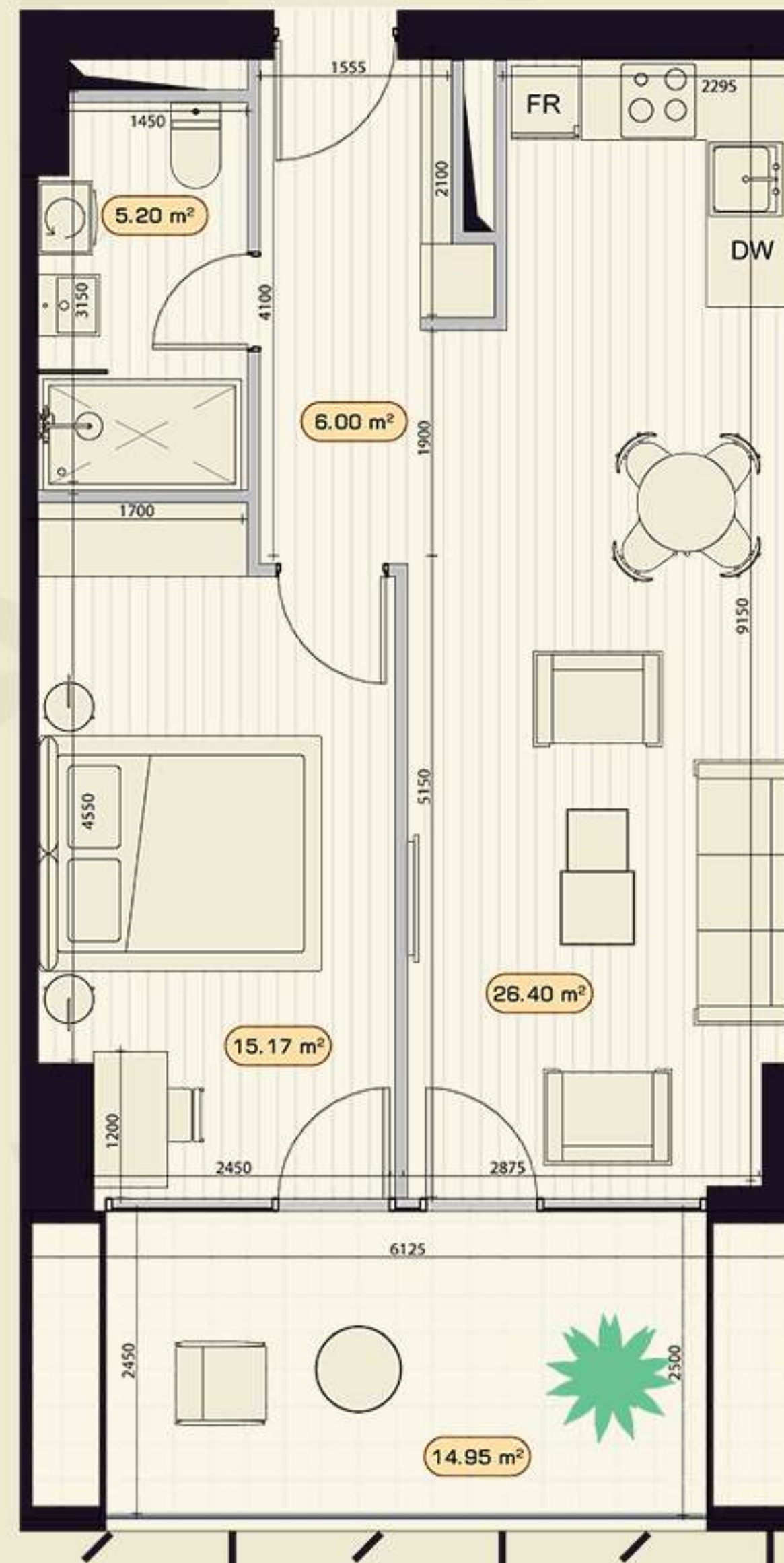
Living Room / Kitchen: **26.40 sq.m**

Bedroom: **15.17 sq.m**

WC: **5.20 sq.m**

Terrace: **14.95 sq.m**

View: **South**



APARTAMENT TYPE

Baasi

1 BEDROOM

Total Area : **70.95 sq.m**

Hall: **5.82 sq.m**

Living Room / Kitchen: **26.65 sq.m**

Bedroom: **15.40 sq.m**

WC: **5.12 sq.m**

Terrace: **16.55 sq.m**

View: **South**



APARTAMENT TYPE

Eldorado

2 BEDROOM

Total Area : **81.80 sq.m**

Hall: **6.13 sq.m**

Living Room / Kitchen: **24.50 sq.m**

Bedroom#1: **15.11 sq.m**

Bedroom#2: **12.53 sq.m**

WC: **4.14 sq.m**

Terrace#1: **10.45 sq.m**

Terrace#2: **7.55 sq.m**

View: **North-East, East**



APARTAMENT TYPE

Palavani

2 BEDROOM

Total Area : **82.45 sq.m**

Hall: **3.17 sq.m**

Living Room / Kitchen: **24.14 sq.m**

Bedroom#1: **15.13 sq.m**

Bedroom#2: **14.58 sq.m**

WC: **4.86 sq.m**

Terrace#1: **11.60 sq.m**

Terrace#2: **7.55 sq.m**

View: **North-West, North**



APARTAMENT TYPE

Banovani

2 BEDROOM

Total Area : **83.80 sq.m**

Hall: **9.15 sq.m**

Living Room / Kitchen: **24.46 sq.m**

Bedroom#1: **13.79 sq.m**

Bedroom#2: **12.24 sq.m**

WC: **4.56 sq.m**

Terrace#1: **10.40 sq.m**

Terrace#2: **7.60 sq.m**

View: **South-East, South**



APARTAMENT TYPE

Ruduni

2 BEDROOM

Total Area : **91.00 sq.m**

Hall: **6.86 sq.m**

Living Room / Kitchen: **26.72 sq.m**

Bedroom#1: **15.06 sq.m**

Bedroom#2: **14.92 sq.m**

WC: **5.25 sq.m**

Terrace#1: **12.60 sq.m**

Terrace#2: **7.60 sq.m**

View: **South-West, West**



APARTAMENT TYPE

Dardimandi

2 BEDROOM

Total Area : **93.75 sq.m**

Hall: **6.00 sq.m**

Living Room / Kitchen: **27.91 sq.m**

Bedroom#1: **14.91 sq.m**

Bedroom#2: **12.44 sq.m**

WC: **4.00 sq.m**

Terrace#1: **19.50 sq.m**

Terrace#2: **7.35 sq.m**

View: **North-East, East**



APARTAMENT TYPE

Tsalkoti

2 BEDROOM

Total Area : **99.90 sq.m**

Hall: **10.31 sq.m**

Living Room / Kitchen: **21.60 sq.m**

Bedroom#1: **15.54 sq.m**

Bedroom#2: **15.03 sq.m**

WC#1: **4.44 sq.m**

Terrace#1: **19.50 sq.m**

Terrace#2: **11.60 sq.m**

View: **South-East, South**



APARTAMENT TYPE

Mukhambazi

2 BEDROOM

Total Area : **101.00 sq.m**

Hall: **7.50 sq.m**

Living Room / Kitchen: **27.73 sq.m**

Bedroom#1: **19.35 sq.m**

Bedroom#2: **14.95 sq.m**

WC#1: **4.75 sq.m**

WC#2: **4.00 sq.m**

Terrace#1: **12.90 sq.m**

Terrace#2: **7.50 sq.m**

View: **North-East, East**



APARTAMENT TYPE

Taverna

2 BEDROOM

Total Area : **102.80 sq.m**

Hall: **4.92 sq.m**

Living Room / Kitchen: **32.42 sq.m**

Bedroom#1: **15.56 sq.m**

Bedroom#2: **14.27 sq.m**

WC: **6.30 sq.m**

Terrace#1: **14.10 sq.m**

Terrace#2: **13.50 sq.m**

View: **North-West, North**



APARTAMENT TYPE

Punduki

2 BEDROOM

Total Area : **102.85 sq.m**

Hall: **7.08 sq.m**

Living Room / Kitchen: **27.67 sq.m**

Bedroom#1: **19.34 sq.m**

Bedroom#2: **16.33 sq.m**

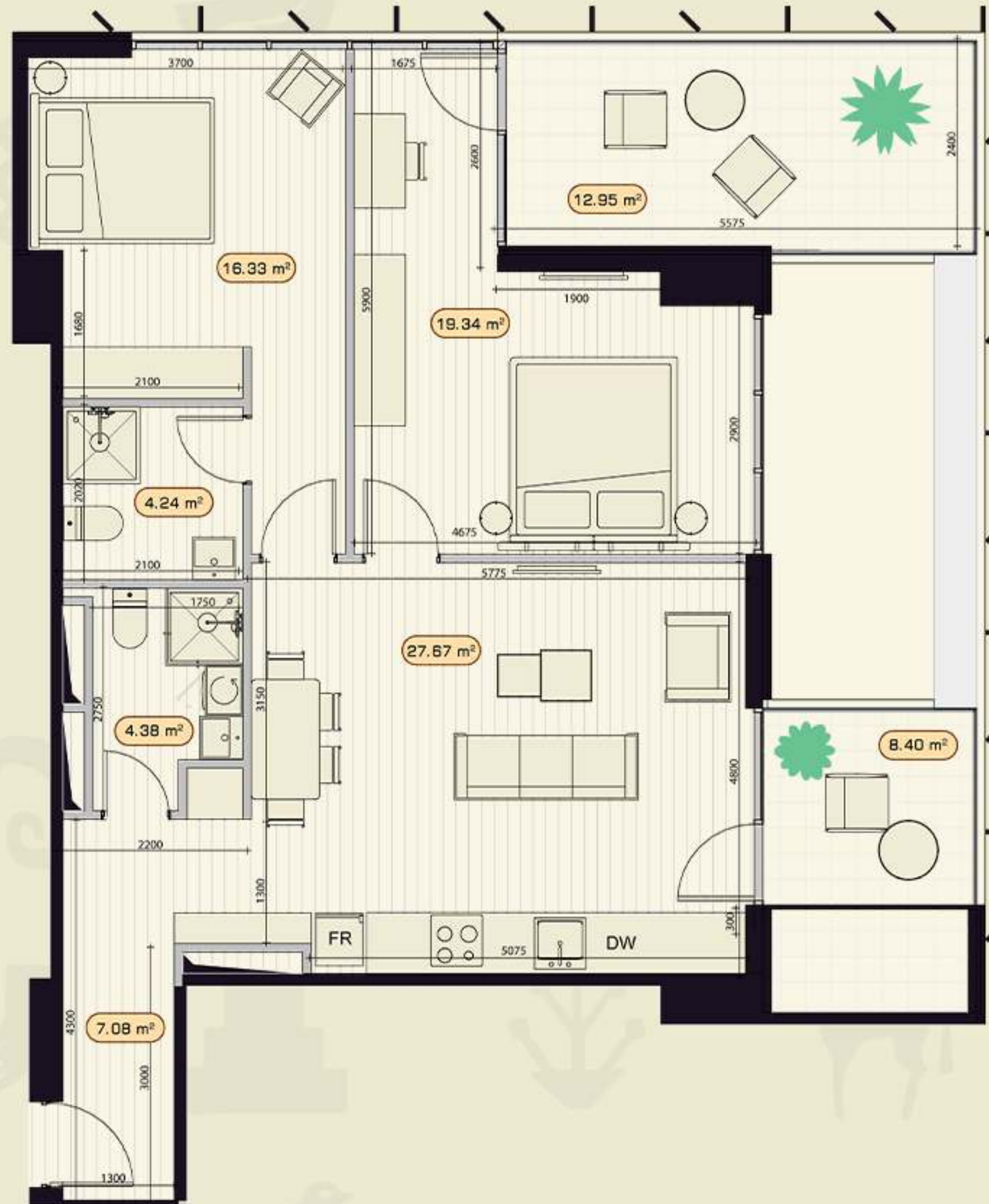
WC#1: **4.38 sq.m**

WC#2: **4.24 sq.m**

Terrace#1: **12.95 sq.m**

Terrace#2: **8.40 sq.m**

View: **North-East, East**



APARTAMENT TYPE

Seidabadi

2 BEDROOM

Total Area : **106.00 sq.m**

Hall: **7.70 sq.m**

Living Room: **19.28 sq.m**

Kitchen: **13.30 sq.m**

Bedroom#1: **15.68 sq.m**

Bedroom#2: **12.17 sq.m**

WC#1: **4.73 sq.m**

WC#2: **4.03 sq.m**

Terrace#1: **14.40 sq.m**

Terrace#2: **12.40 sq.m**

View: **South-East, South**

DAIRA
BY BIOGRAPI



APARTAMENT TYPE

Bohema

2 BEDROOM

Total Area : **108.00 sq.m**

Hall: **8.60 sq.m**

Living Room / Kitchen: **33.33 sq.m**

Bedroom#1: **15.65 sq.m**

Bedroom#2: **12.00 sq.m**

WC#1: **4.37 sq.m**

WC#2: **4.04 sq.m**

Terrace#1: **14.40 sq.m**

Terrace#2: **13.50 sq.m**

View: **South-East, South**





housebook

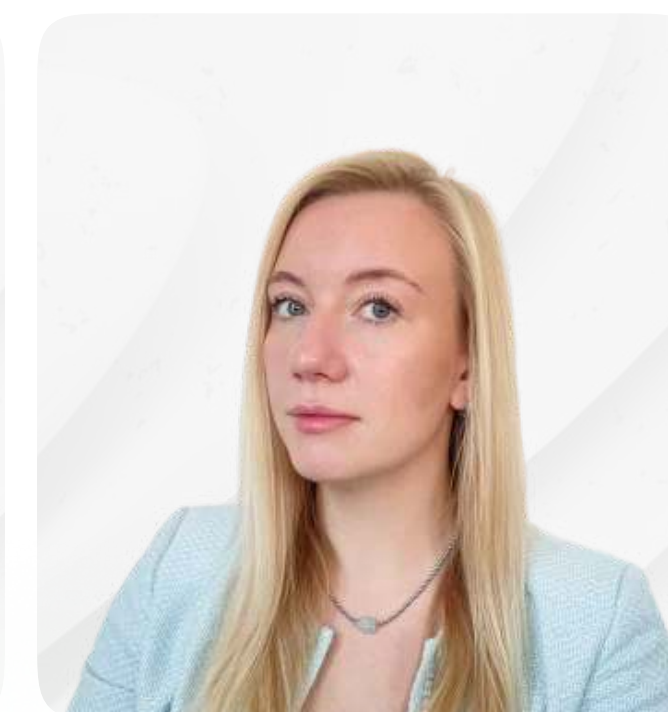
international real estate
IT-platform for agents

WhatsApp for communication 

Partnership managers



Alevtina
Kapustina



Svetlana
Guseva

housebook.deals

partner@housebook.deals