



ALTIERA

HEIGHTS

PROJECT BRIEF



Crafted from Contrast

This is urban living, reimagined at Jumeirah Islands.
An inspired expression of residential artistry by Ellington Properties.

Singular in vision. Subtle in presence. Seamlessly serene.

A dialogue of rhythm and form

A curated architectural statement nestled within the storied beauty of Jumeirah Islands. Known for its tranquil waterways, sculpted greenery, and discreet prestige, this enclave becomes the new canvas for Ellington's evolving design language.

Here, our signature aesthetic, defined by clean lines, expressive materials, and a reverence for form and function finds new expression. Framed by reflective waters and layered foliage, Altiera Heights is not just a place to live; it is a place to observe, breathe, and belong.

Every residence is attuned to its setting, with spatial choreography that embraces dual aspects, soft light, and curated perspectives, making each view not just a sightline, but a moment of clarity.



Jumeirah Islands

Nestled east of Sheikh Zayed Road, between interchanges 5 and 6, Jumeirah Islands is more than a neighborhood, it's a lifestyle enclave with one of the most unique land-to-water ratios in the world. Surrounded by shimmering artificial lakes, the community enjoys a rare 2:1 land-to-water ratio, making it one of the most tranquil, exclusive residential settings in Dubai.

Positioned amidst Jumeirah Lakes Towers, The Meadows, and Jumeirah Park, the location strikes a powerful balance: secluded but connected, residential yet commercially dynamic.



STRATEGICALLY CONNECTED

Situated at the southern edge of Jumeirah Lakes Towers and just minutes from Dubai Marina, Emirates Golf Club, and Ibn Battuta Mall, the community offers seamless access to both lifestyle and business hubs, placing you at the intersection of convenience and connectivity.

LIFESTYLE INTEGRATION

Laced with running tracks, landscaped parks, sports courts, and serene lakeside paths, the neighborhood makes wellness a natural part of everyday life. It's a setting that fosters clarity, calm, and effortless living, where lifestyle and productivity exist in perfect harmony.

RETAIL & EVERYDAY CONVENIENCE

From International schools to curated retail at Jumeirah Islands Pavilions, every necessity is thoughtfully within reach. Adjacent community centers such as Meadows Town Centre and the JLT retail promenade further enrich the day-to-day experience with dining, shopping, and service offerings close to home.

Sun and views analysis



SUMMER
SUNSET

W

WINTER
SUNSET

N

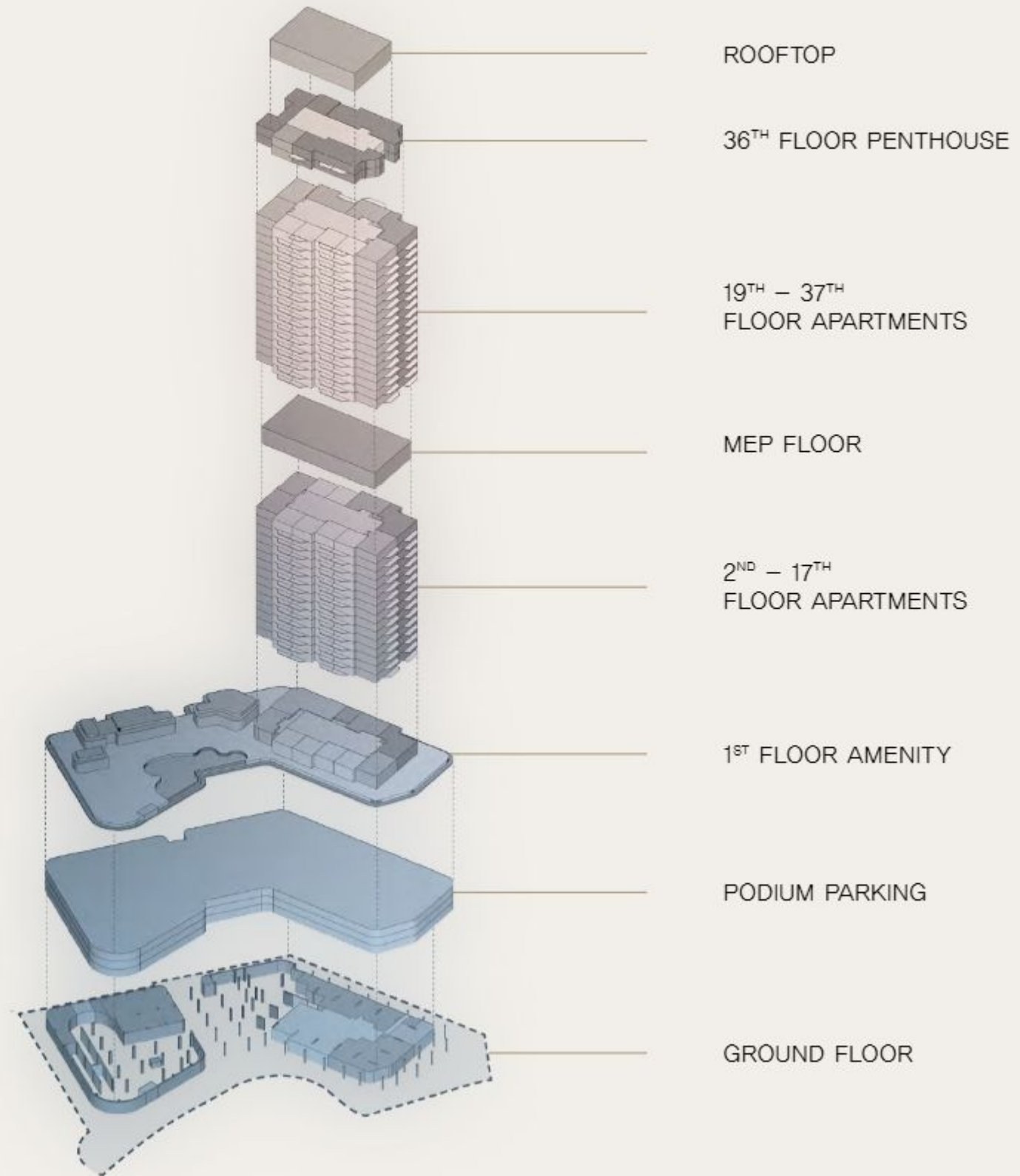
S

WINTER
SUMMER

E

SUMMER
SUNRISE

Architectural sections



GROUND FLOOR AMENITIES PLAN

- 01 MAIN ROAD ENTRANCE
- 02 DROP-OFF PLAZA
- 03 LANDSCAPE FEATURE
- 04 TAXI WAITING AREA
- 05 LOBBY ENTRANCE
- 06 LOBBY RECEPTION
- 07 COMMUNAL TABLE
- 08 SERVICE COUNTER
- 09 LIFT LOBBY
- 10 SERVICE LIFT

- 11 BICYCLE PARKING & REPAIR STATION
- 12 MOVE-IN TRUCK ZONE
- 13 VISITOR PARKING
- 14 RESIDENTS VEHICLE ACCESS
- 15 EV CHARGING STATION
- 16 INDEPENDENT CAR WASH BAY
- 17 ACCESS TO UPPER LEVEL PARKING
- 18 ACCESS TO GROUND FLOOR
- 19 F&B TERRACE
- 20 GREEN SOCIAL SPACE



UH WEST
BY ELLINGTON

TO
JUMEIRAH LAKES
TOWERS

JUMEIRAH ISLAND
STREET

URBAN
PLAZA

TO
JUMEIRAH ISLANDS
PAVILION

1st FLOOR AMENITIES PLAN

- | | |
|--------------------------|--------------------------------|
| 01 INFINITY-EDGE POOL | 18 OUTDOOR KIDS PLAY |
| 02 BAJA SHELF | 19 OUTDOOR GREENHOUSE PAVILION |
| 03 SOAK & SOCIAL BENCH | 20 GAMES STATION |
| 04 SUN LOUNGERS AREA | 21 OUTDOOR GAMES AREA |
| 05 OUTDOOR SHOWER | 22 KARAOKE/CINEMA ROOM |
| 06 POOL PAVILION | 23 PODCAST ROOM |
| 07 POOL ENTRANCE | 24 KITCHENETTE |
| 08 WATER GARDEN | 25 BAR AREA |
| 09 OUTDOOR SEATING AREAS | 26 CLUB LOUNGE |
| 10 FITNESS STUDIO | 27 CLUB TERRACE |
| 11 BOXING AREA | 28 VITALITY POOLS |
| 12 YOGA STUDIO | 29 JAPANESE-ONSEN BATHS |
| 13 OUTDOOR YOGA AREA | 30 STEAM & SAUNA ROOMS |
| 14 FEMALE CHANGE ROOM | 31 CHANGE ROOMS |
| 15 MALE CHANGE ROOM | 32 GROOMING & BEAUTY LOUNGE |
| 16 OUTDOOR FITNESS AREA | 33 SPA TERRACE |
| 17 KIDS CLUB | 34 LIFT LOBBY |





housebook Real Estate Company
since 2012 in the UAE

+971 (4) 412-5007

Managers of partnerships



Alevtina Kapustina



Svetlana Guseva

Office

Housebook Real Estate LCC

Dubai Marina, office 2502-01, Dubai, UAE

Company license: 1128098

ae.housebook.deals

partner@housebook.ae

