

BINGHATTI
Hillside



A Legacy of Architectural Artistry

As a distinguished Emirati property brand, Binghatti has carved a niche for itself by creating iconic landmarks that redefine the skyline. The brand's diverse portfolio caters to a wide spectrum of discerning clientele, offering projects that range from accessible elegance to ultra-high-end luxury. Binghatti's signature design DNA, meticulously woven into each development, sets it apart on the global stage. With over 79 projects in the region valued at more than AED 50 billion, Binghatti is a leading privately held developer in the UAE. The company's impressive track record, including the successful delivery of 20,000 units prior to 2024, underscores its dedication to crafting exceptional living spaces. Through groundbreaking collaborations with prestigious luxury brands such as BUGATTI, Mercedes-Benz, and Jacob & Co., Binghatti continues to push boundaries and set new benchmarks in the world of branded real estate.



A Raised Sanctuary

Beyond Dubai's pulse, a peaceful refuge rises. This is Hillside, where calm finds its expression. A contemporary landmark found between ambition and nature. Here, daily life moves into a peaceful, elevated rhythm.



About Hillside

Explore the design philosophy behind Hillside, where every element is carefully considered. Hillside lives its name, where form and function merge.



Project Facts

Property Type

Residential & Retail

Plot Area

3874.92 SQ. M./ 41709.29 SQFT

Description

3B + G + 2P +21 Residential Floors + Roof

Number of Units

Studio Apartment : 320

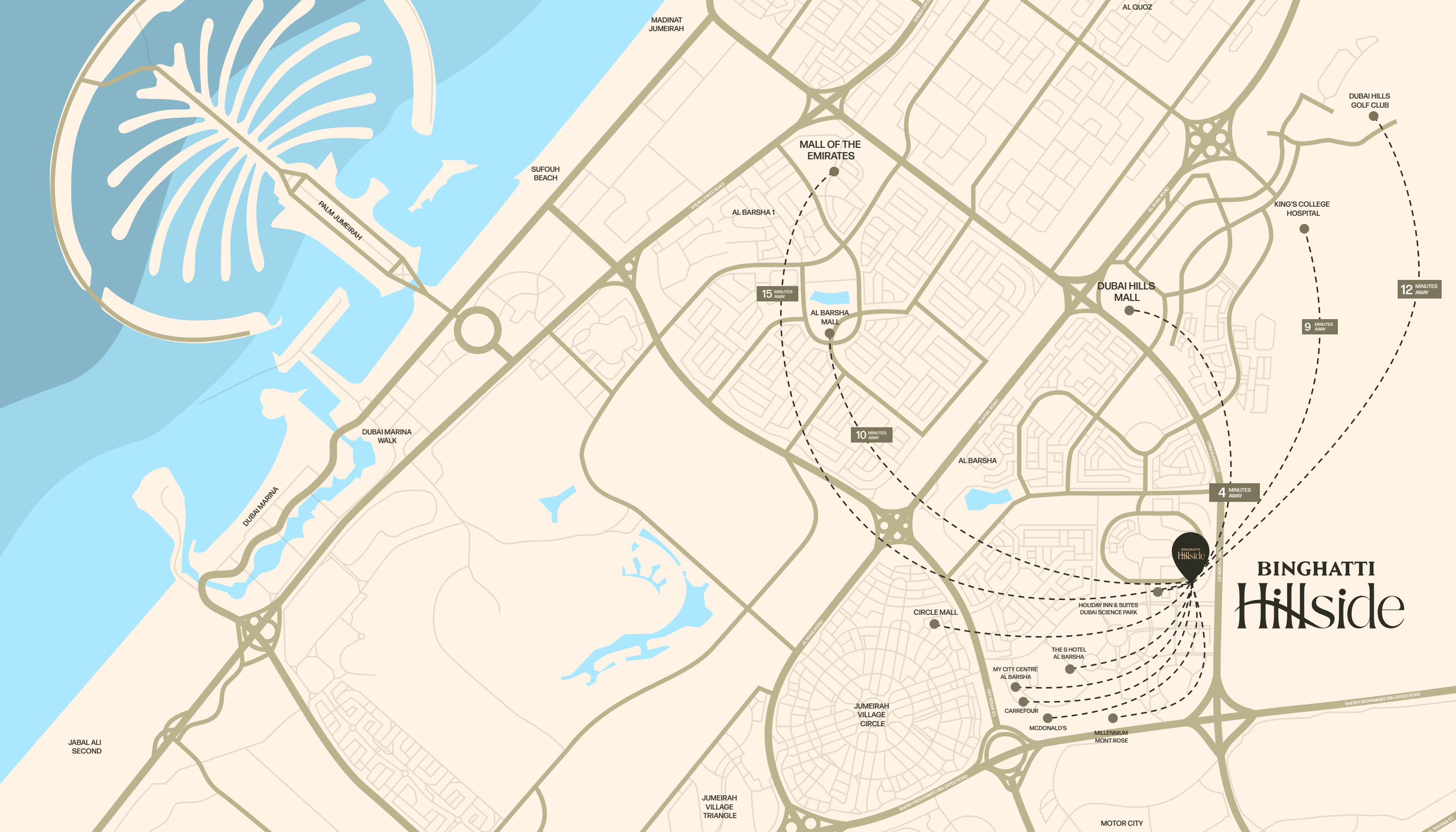
1-Bedroom Apartment : 82

Total Units

Total Residential Units : 402

Shop (Ground Floor) : 09





The City Made Seamless

Hillside offers excellent links within Dubai Science Park, making the rest of the city easily accessible. Its strategic location provides quick access to major roads like E44 Al Khail Road, Umm Suqeim Road, and E11 Sheikh Zayed Road. A future Metro Line nearby will enhance travel further. Key landmarks such as Dubai Hills Mall are mere minutes away, and Mall of the Emirates is reachable in nine minutes.

Nearby Amenities

- | | | | |
|---|---|--|--|
| 
Dubai Hills Mall | 
Palm Jumeirah | 
Burj Al Arab | 
Butterfly Garden |
| 
Miracle Garden | 
Global Village | 
Jumeirah Golf Estates | 
IMG Worlds of Adventure |

The Utmost Comfort

Hillside celebrates a unique way of living. Enjoy exceptional comfort and refined ease, with every need anticipated and every desire met by exclusive concierge and Masaken Luxury services. Find calm with contemplative spaces designed to encourage pause. This is complete tranquility, where life's flow finds its luxurious expression.





Your Ascent to Clarity

Linger. Observe the gentle slope, the shimmer, and reflections, and the precise details that hint at artistry. Here, beauty is tangible.

Hillside

Your world. Perfectly Balanced.



Amenities



Kids play area



Adult pool



Seating areas



Kids pool



Half
basketball court



Sunken seating



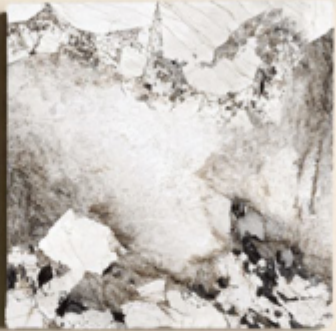
Pool deck



Lobby Materials



Travertine



Marble



Mirror



Perforated Metal



Wood



Special Paint



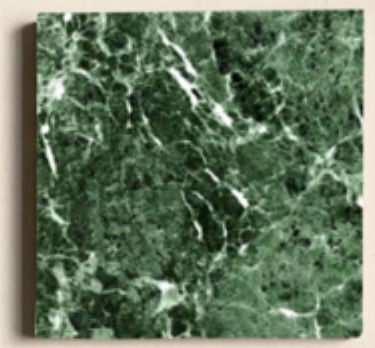
Brass



Apartment Materials



Wood Porcelain



Marble



Mirror



Porcelain Tiles



Wood



Porcelain



Brass



A World of Inspired Renewal

Hillside provides a carefully selected range of amenities designed to enhance every part of daily living. Enjoy the sparkling adult pool or relax on the spacious pool deck. Children will love the dedicated kids' pool and play area, while sports enthusiasts can use the half basketball court. Thoughtfully designed sunken seating and other relaxation areas offer quiet contemplation and social interaction. This is your personal oasis, a place to rekindle and recharge.



Binghatti Style Living Bespoke

EXPERT PROPERTY SERVICES ALL UNDER ONE ROOF



Property Management



Unit Resale



Parking Sale



Holiday Homes



Annual Maintenance



Furniture Packages



One Scan
All Solution



housebook

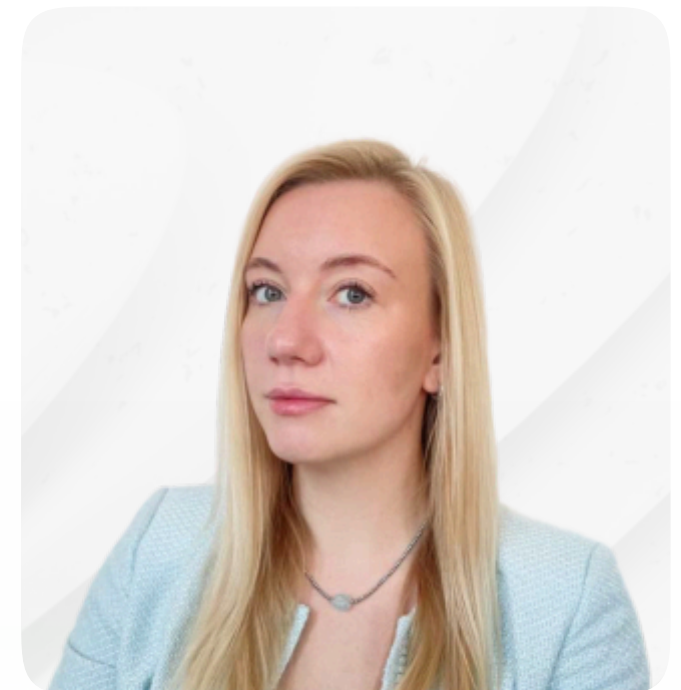
international real estate
IT-platform for agents

Whatsapp contacts 

Partnership managers



Alevtina
Kapustina



Svetlana
Guseva

housebook.deals

partner@housebook.deals