

Tilal

BINGHATTI

The Oasis Villa

4 BEDROOM

Our Legacy Reimagined on the Horizon

Tilal Binghatti marks a historic moment. For the first time, Binghatti's architectural signature unfolds across a ten-million-square-foot masterplan.

This milestone represents the first of its kind in our history where our design DNA, once reserved for the sky, takes root in the soil to create a self-contained, walkable urban district.



Inspired by an Evergreen Spirit
Isometric Floor Plan



GROUND FLOOR



1ST FLOOR



2ND FLOOR



4 Bedrooms with Attached Bathrooms (T&B)



Drivers and Maids Room



Double-Height Living Area



Elevator / Lift



Smart Home Technology Integration



Storage Room

The Residence Collection

Nestled within pristine greenery, our villa balance architectural elegance with a deeply luxurious sense of retreat.

This is the future of open living, framing serene views of meandering landscapes and lush horizons.



Mid Unit Villa
(Ground floor)



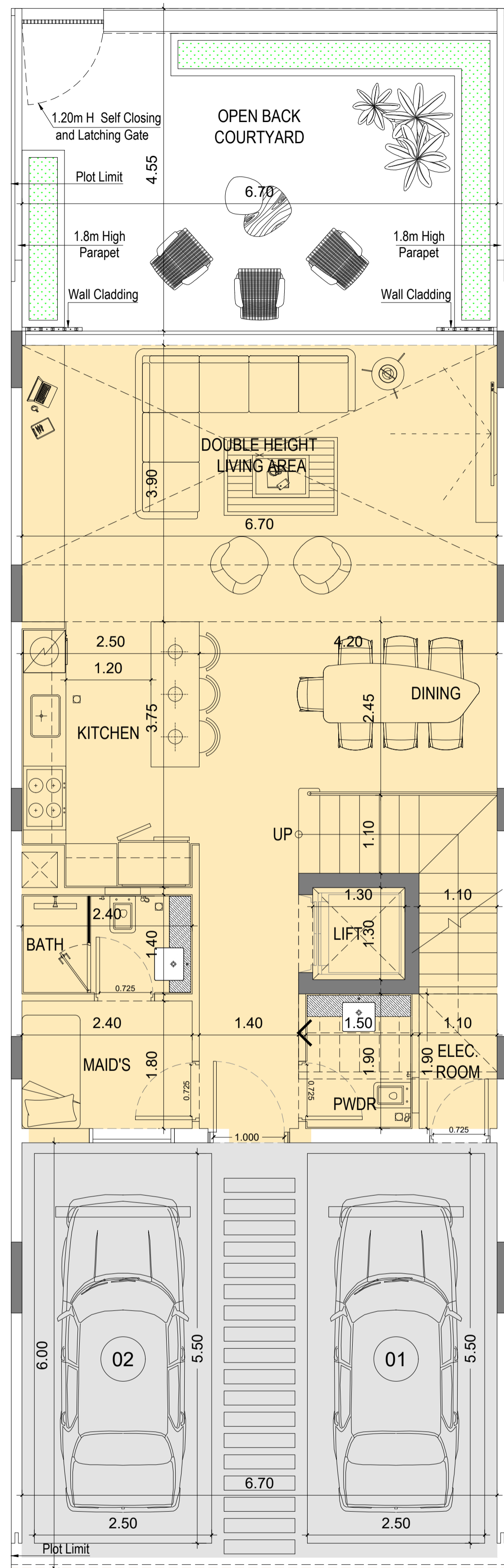
Mid Unit Villa
(First floor)



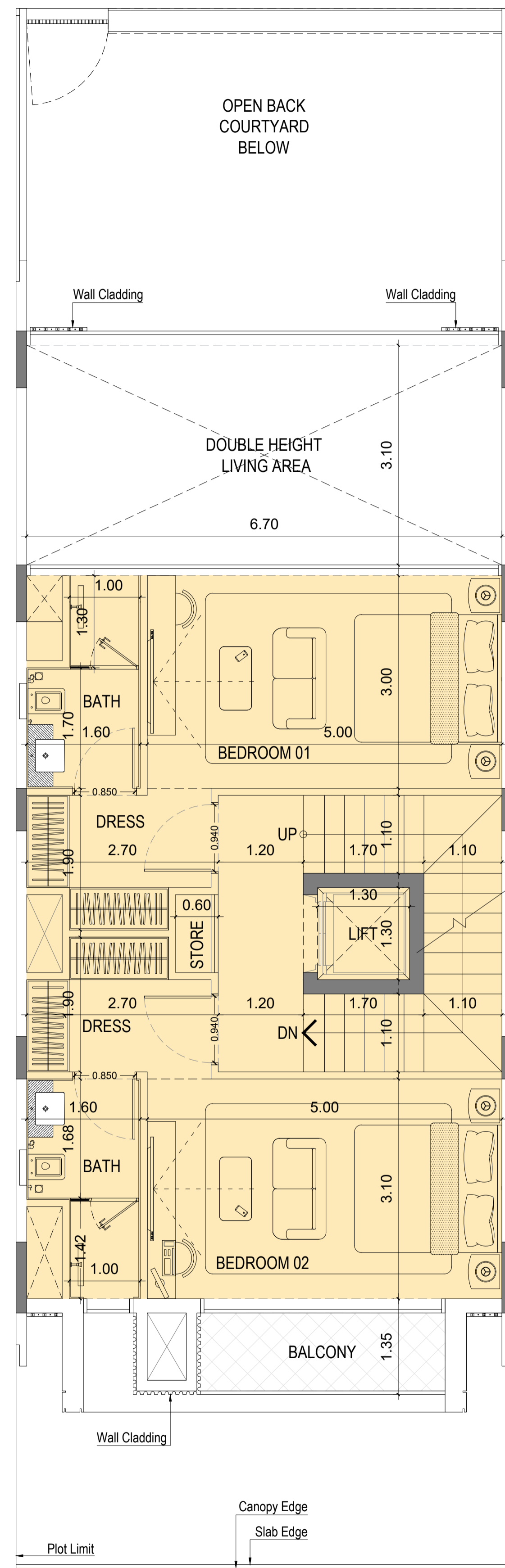
Mid Unit Villa
(Second floor)



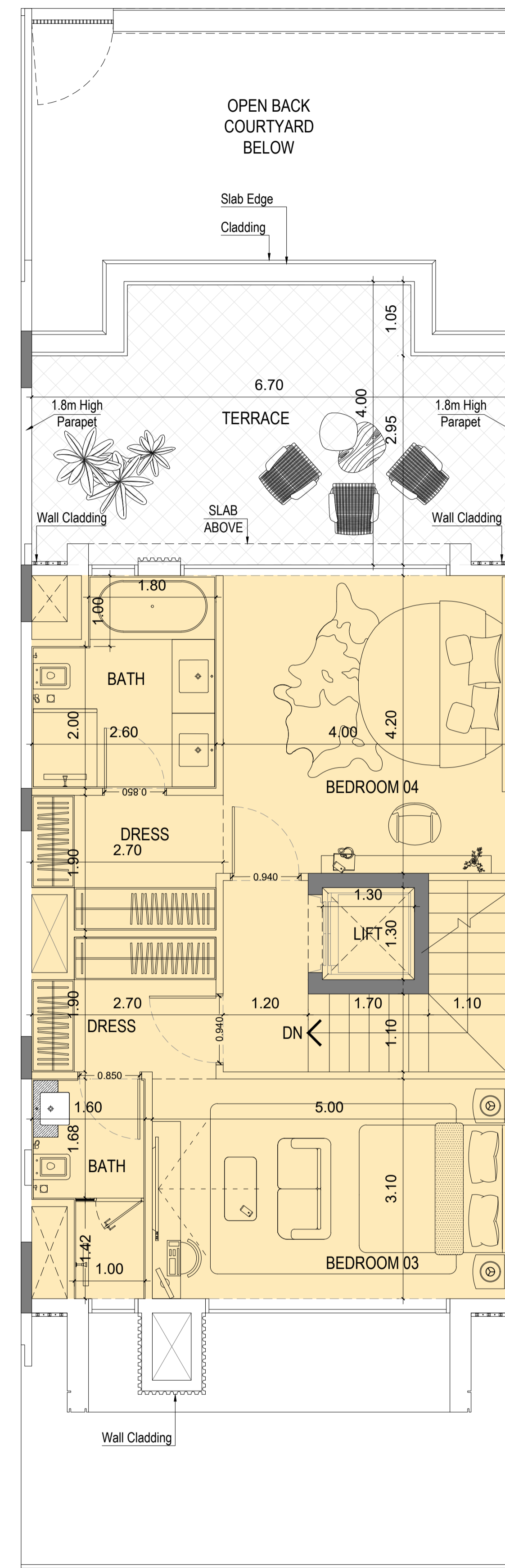
Mid Unit Villa
(Roof)



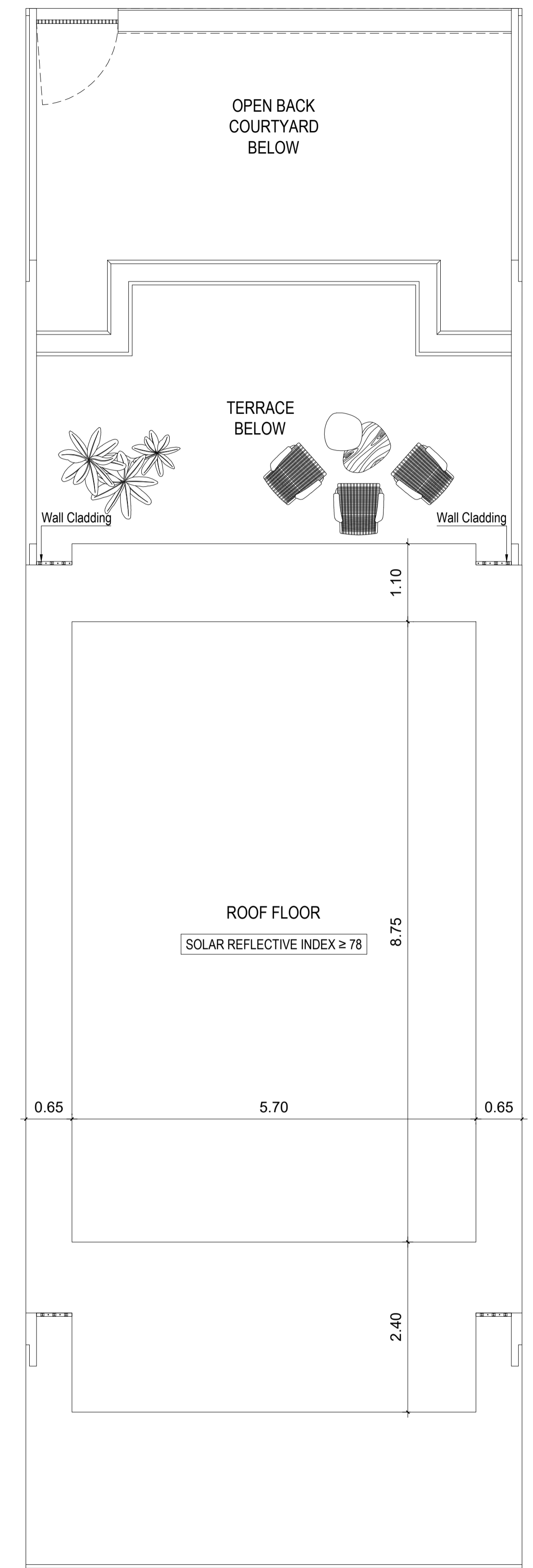
Ground Floor



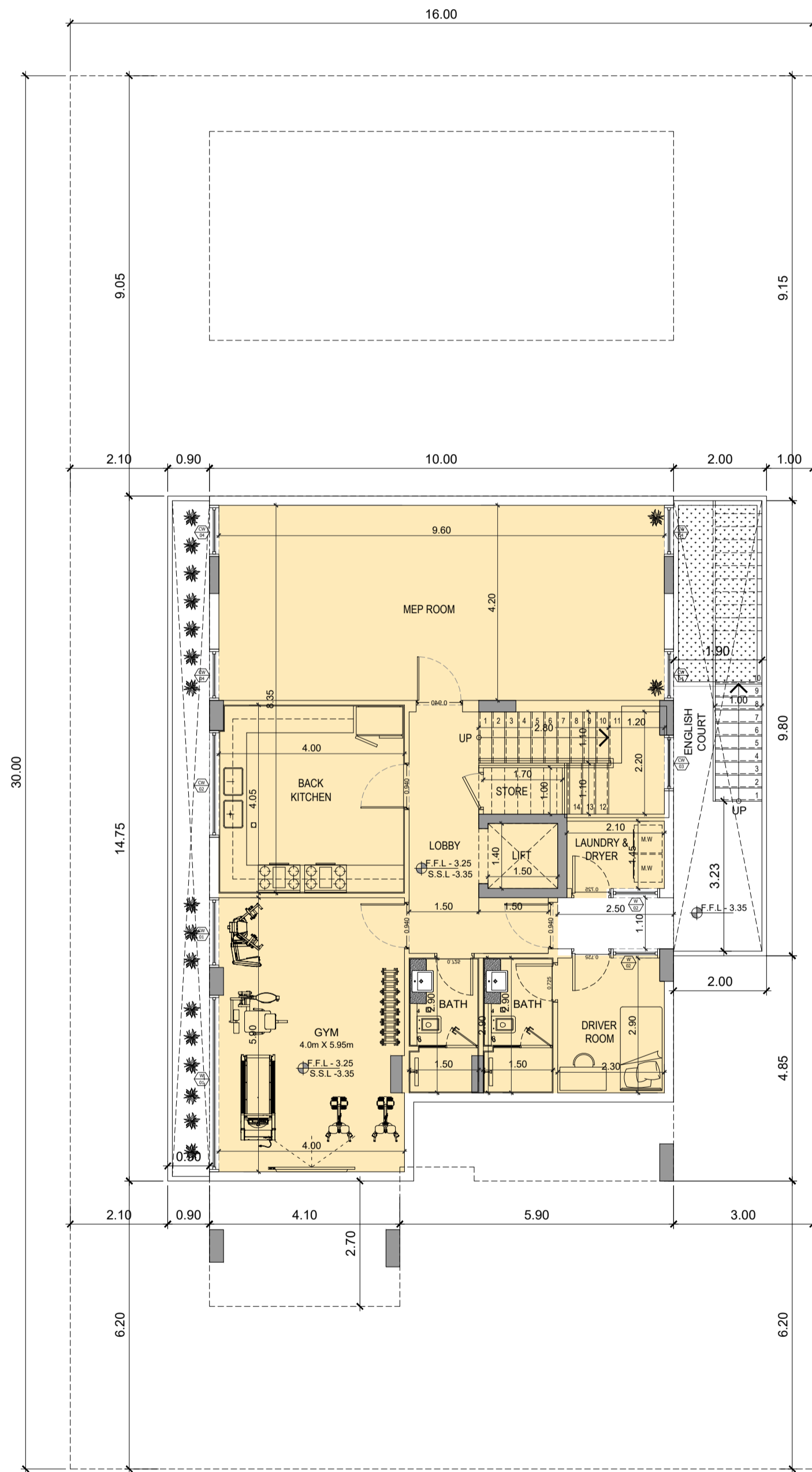
First Floor



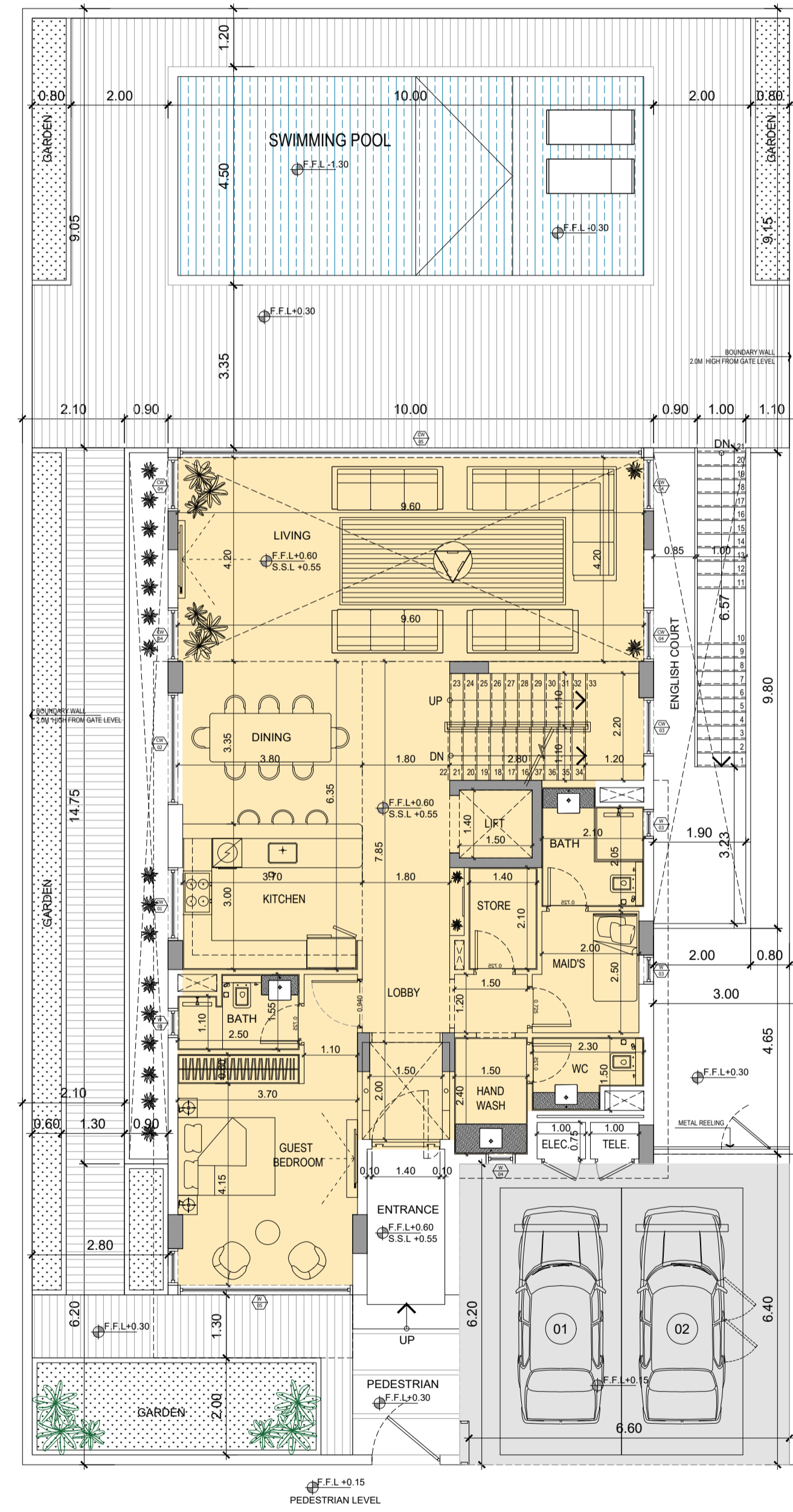
Second Floor



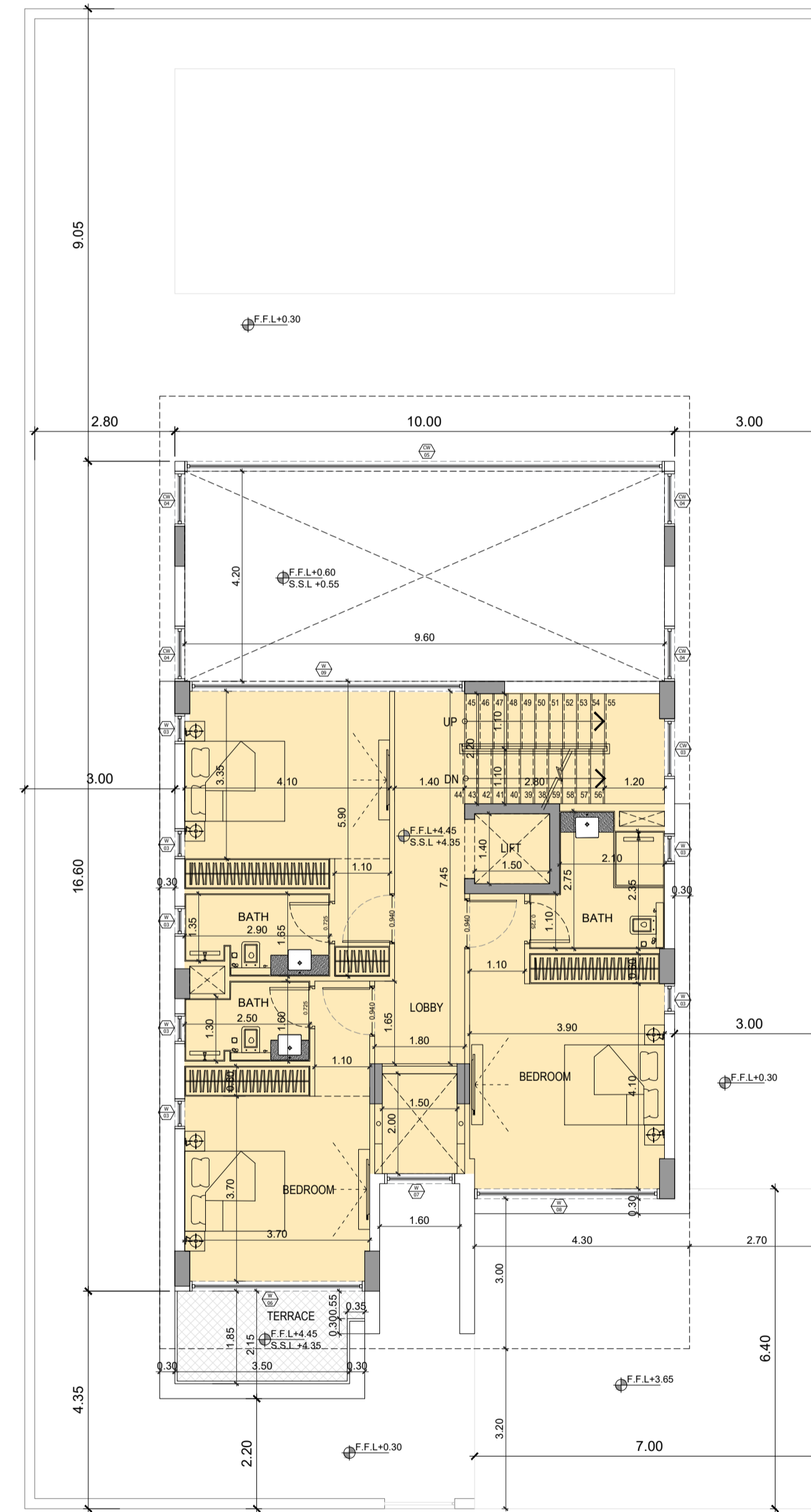
Roof Floor



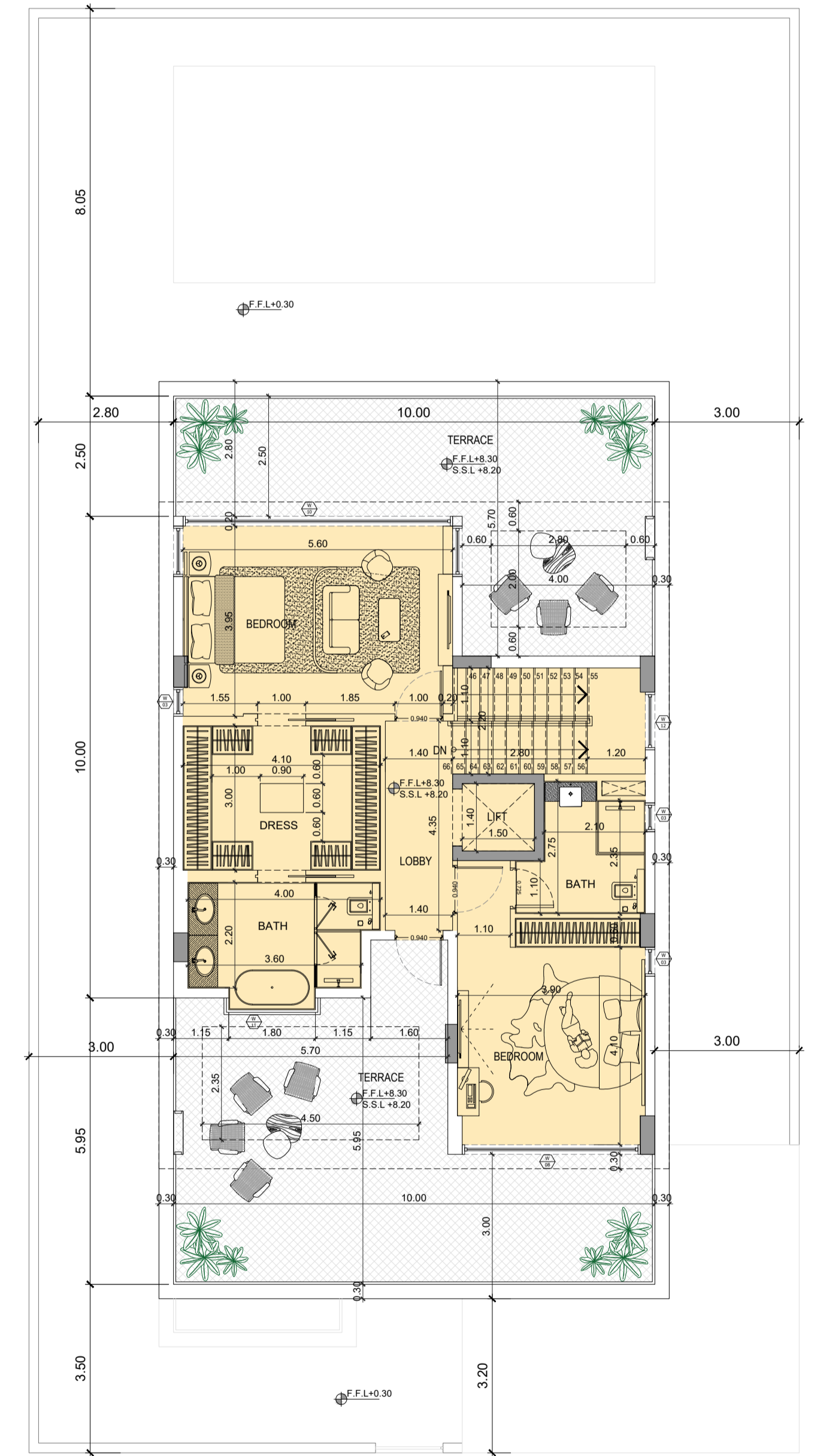
BASEMENT FLOOR



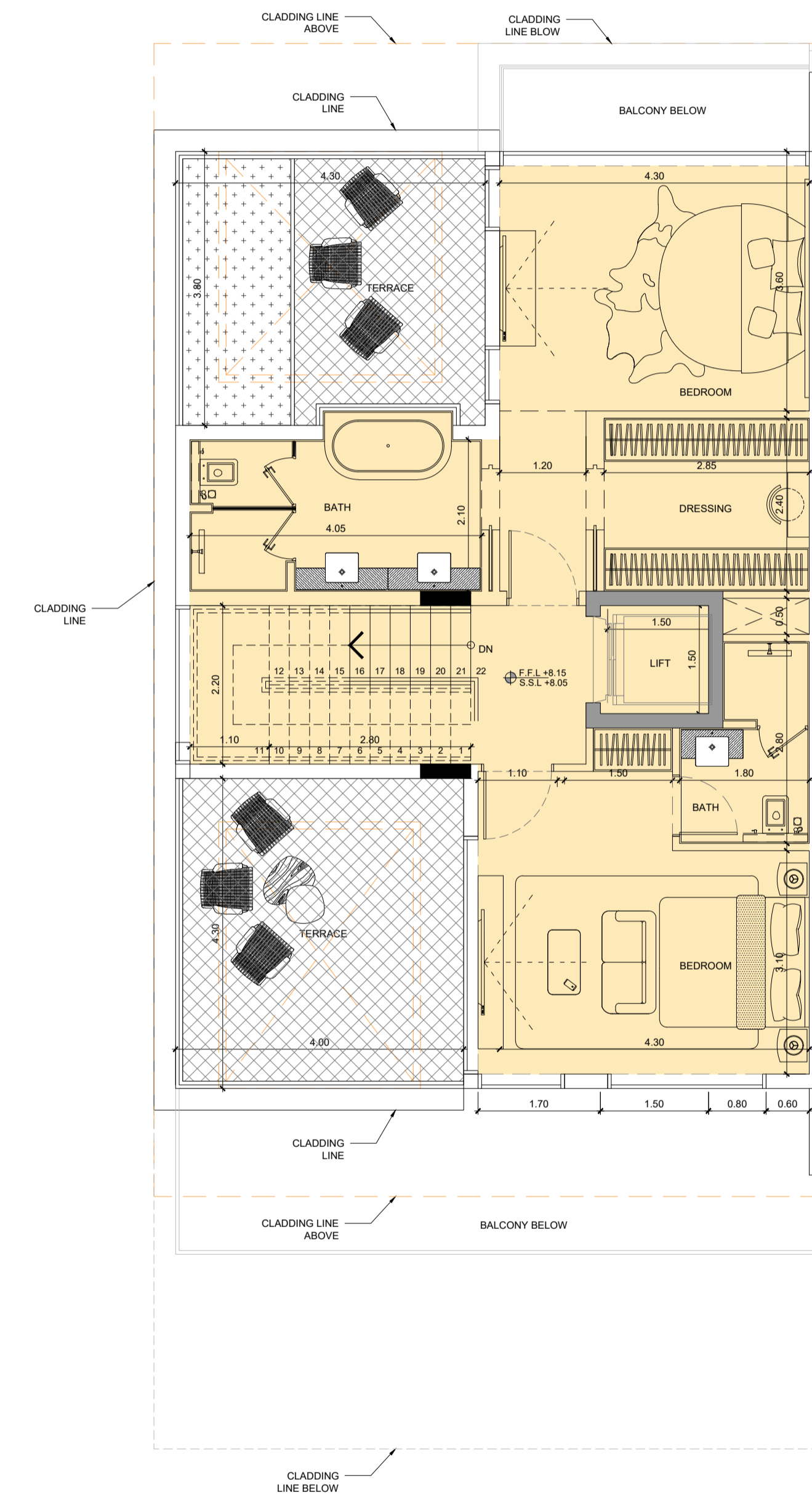
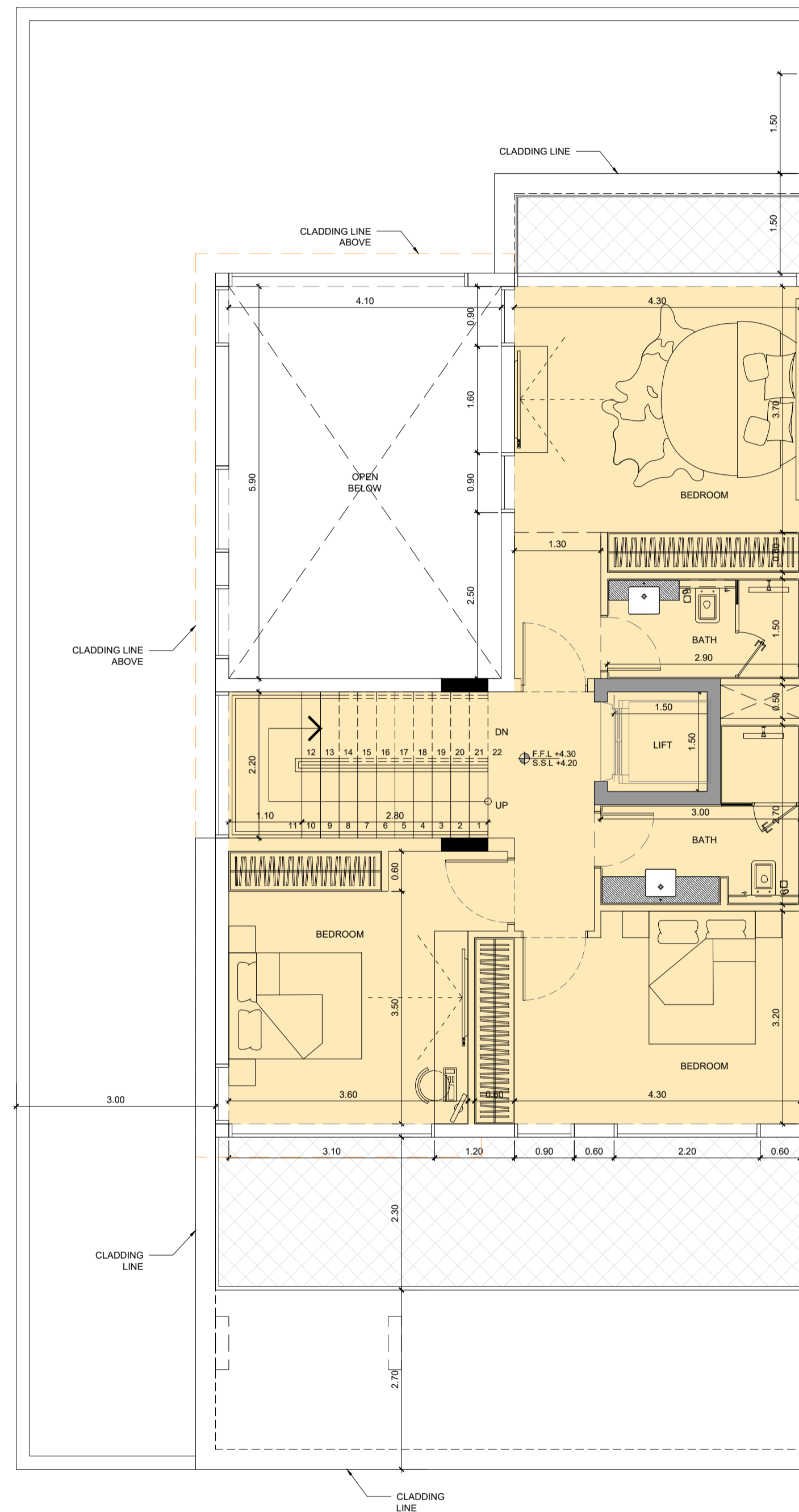
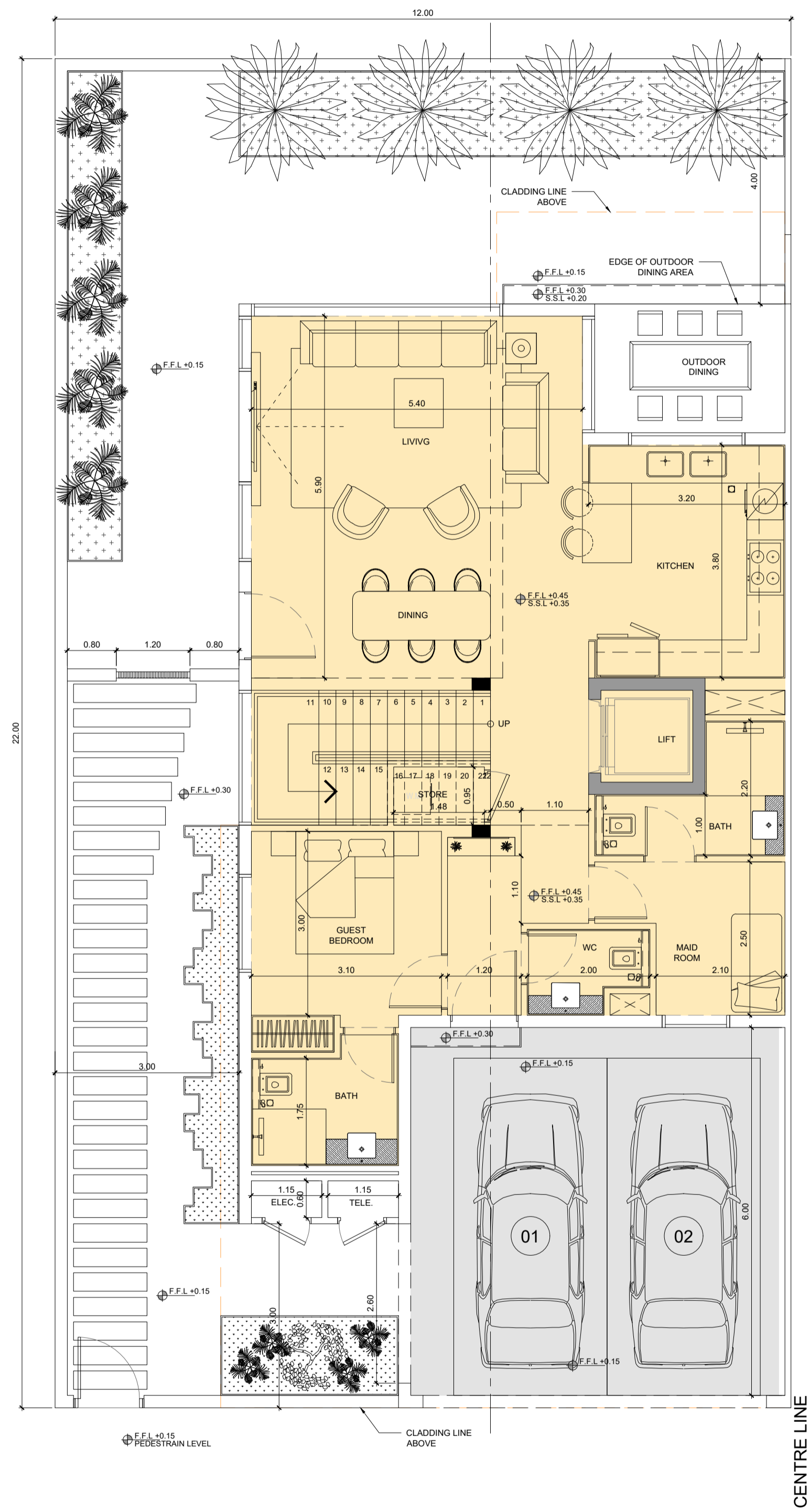
GROUND FLOOR

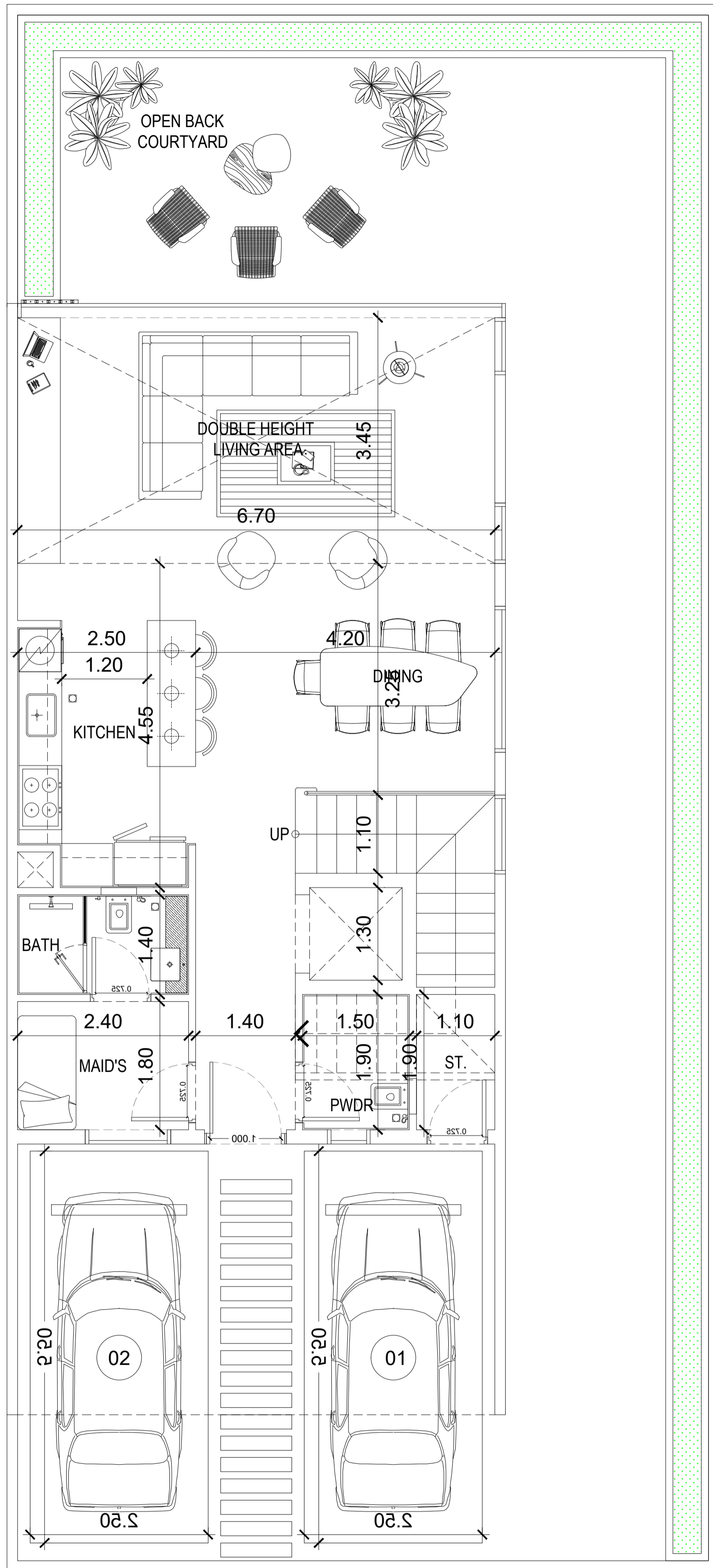


FIRST FLOOR

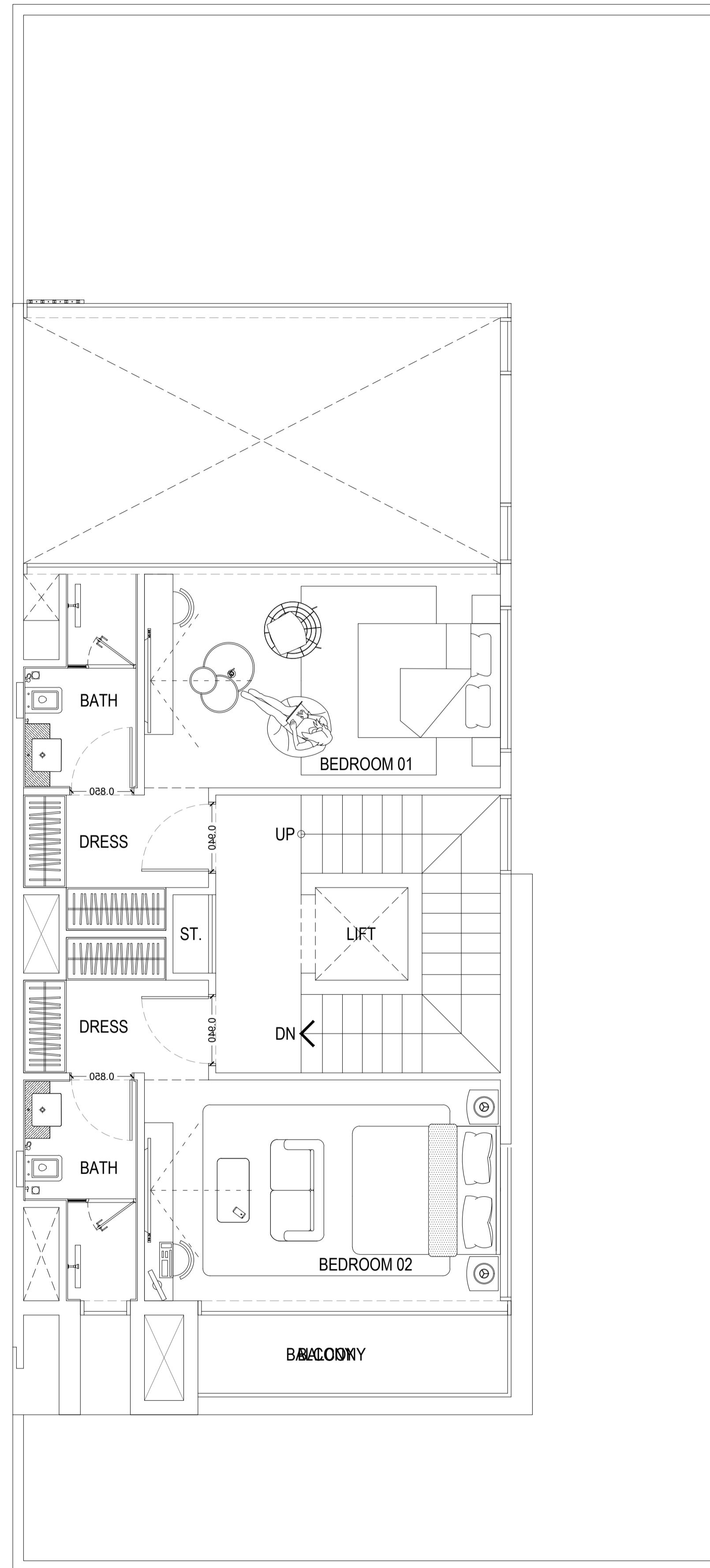


SECOND FLOOR

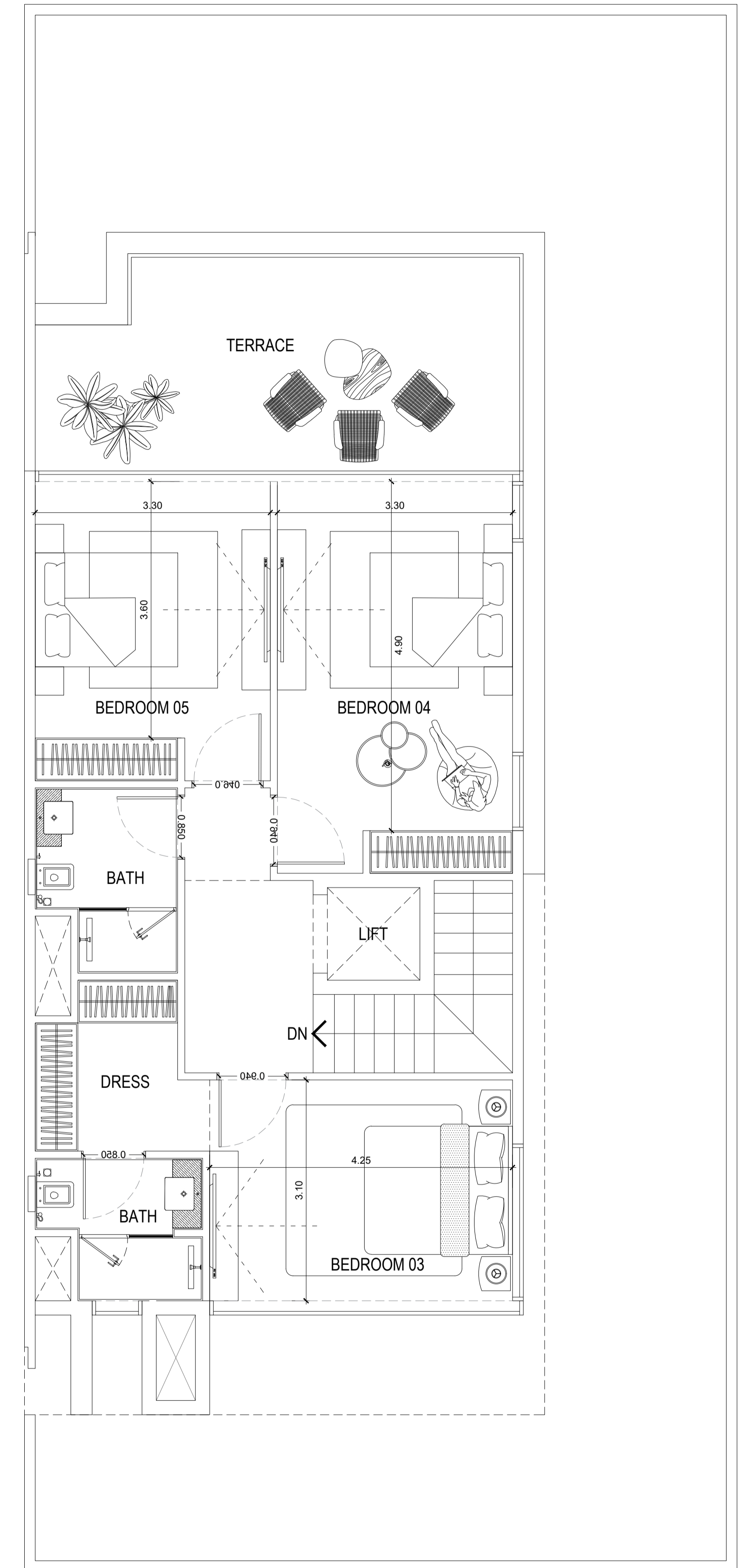




Ground Floor



First Floor



Second Floor



housebook

international real estate
IT-platform for agents

WhatsApp for communication 

Managers of partnerships



**Alevtina
Kapustina**



**Svetlana
Guseva**

housebook.deals

partner@housebook.deals