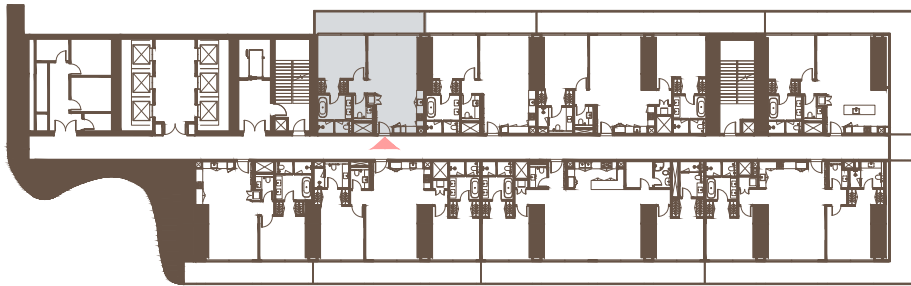
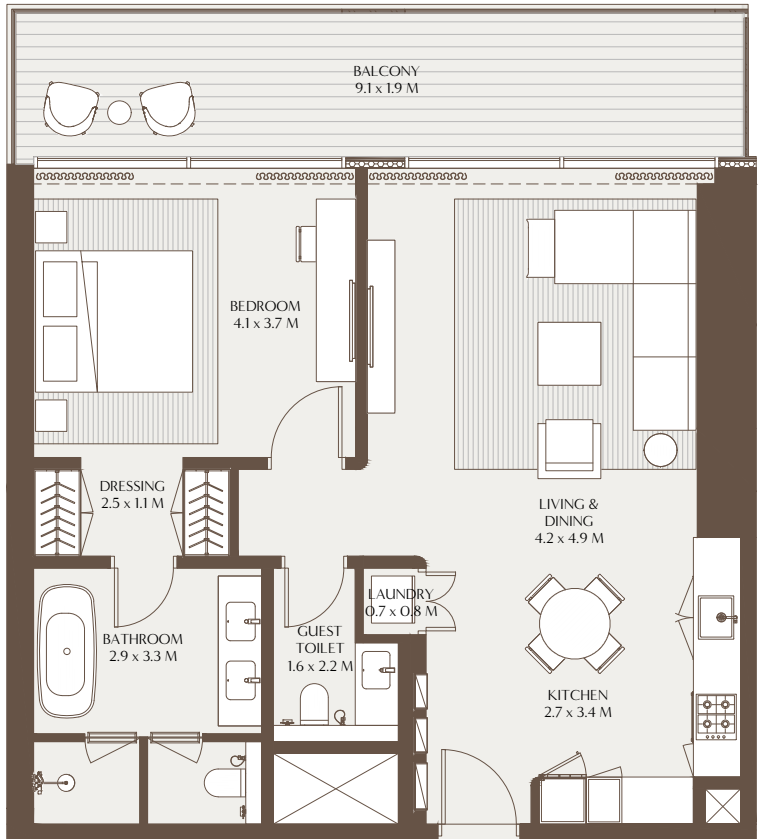


AKALA

The Elements - 1 Bedroom Residence A

Unit Area: 78.47 Sqm (844.65 Sqft) | Balcony Area: 17.78 Sqm (191.36 Sqft) | Total Area: 96.25 Sqm (1,036.01 Sqft)

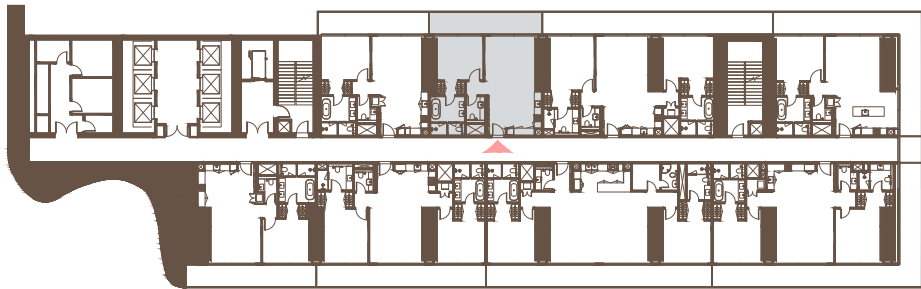
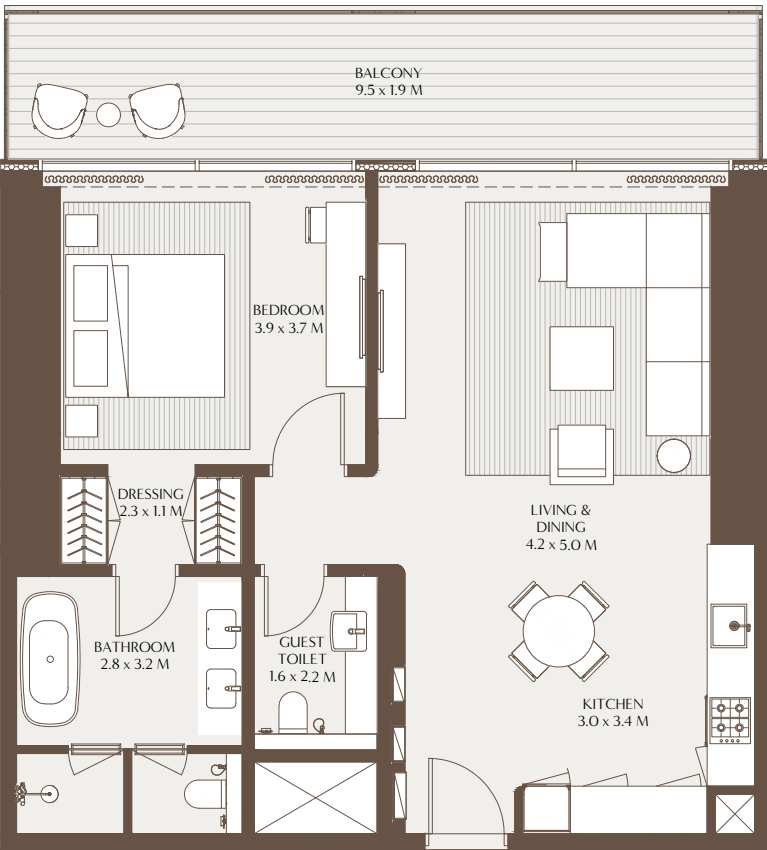


4TH TO 17TH, 19TH TO 29TH FLOOR



The Elements - 1 Bedroom Residence B

Unit Area: 79.08 Sqm (851.21 Sqft) | Balcony Area: 17.92 Sqm (192.89 Sqft) | Total Area: 97.00 Sqm (1,044.10 Sqft)



4TH TO 17TH, 19TH TO 29TH FLOOR

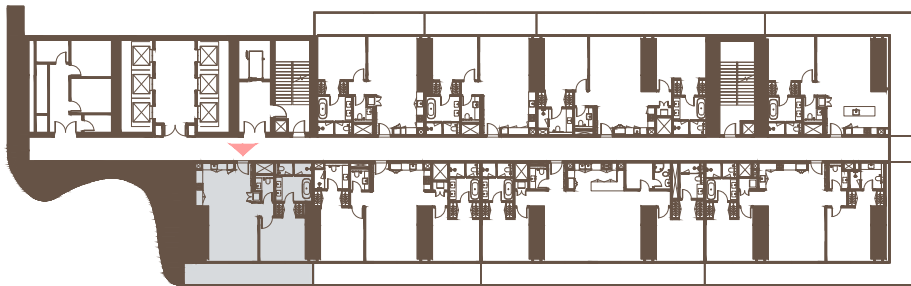
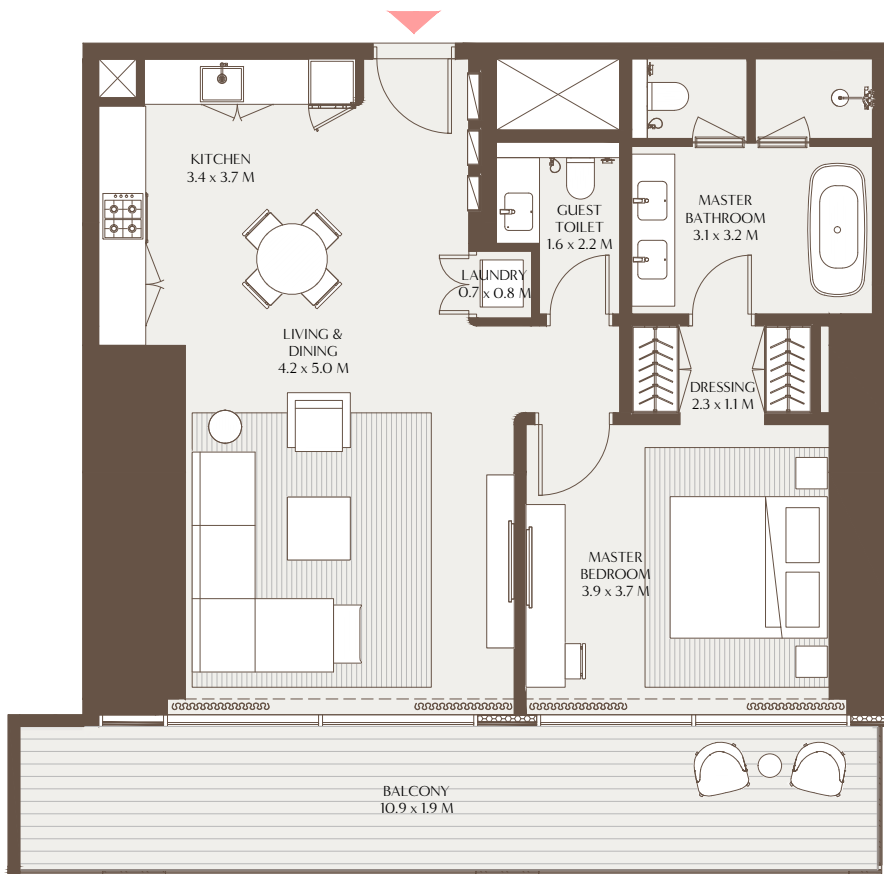


1-Measurements are indicative 'finish to finish' in Metric & Imperial excluding construction tolerance. 2-Plot/unit dimensions may vary from brochure, and unit types/plans may exist as mirrored versions; 3-All images used are for illustrative purposes only. 4-Unless stated otherwise, all fittings and interior decorative items shown are for illustrative purposes only. 5-The developer reserves the right to make alterations, at its absolute discretion, without any liability whatsoever up to the final 'as built' status.

1-Measurements are indicative 'finish to finish' in Metric & Imperial excluding construction tolerance. 2-Plot/unit dimensions may vary from brochure, and unit types/plans may exist as mirrored versions; 3-All images used are for illustrative purposes only. 4-Unless stated otherwise, all fittings and interior decorative items shown are for illustrative purposes only. 5-The developer reserves the right to make alterations, at its absolute discretion, without any liability whatsoever up to the final 'as built' status.

The Elements - 1 Bedroom Residence C

Unit Area: 80.82 Sqm (869.94 Sqft) | Balcony Area: 31.01 Sqm (333.79 Sqft) | Total Area: 111.83 Sqm (1,203.73 Sqft)

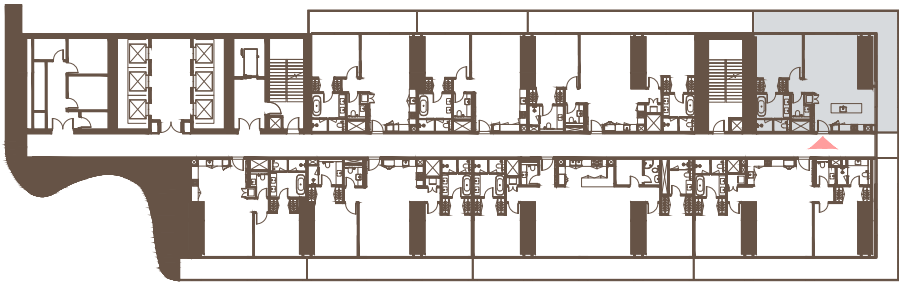
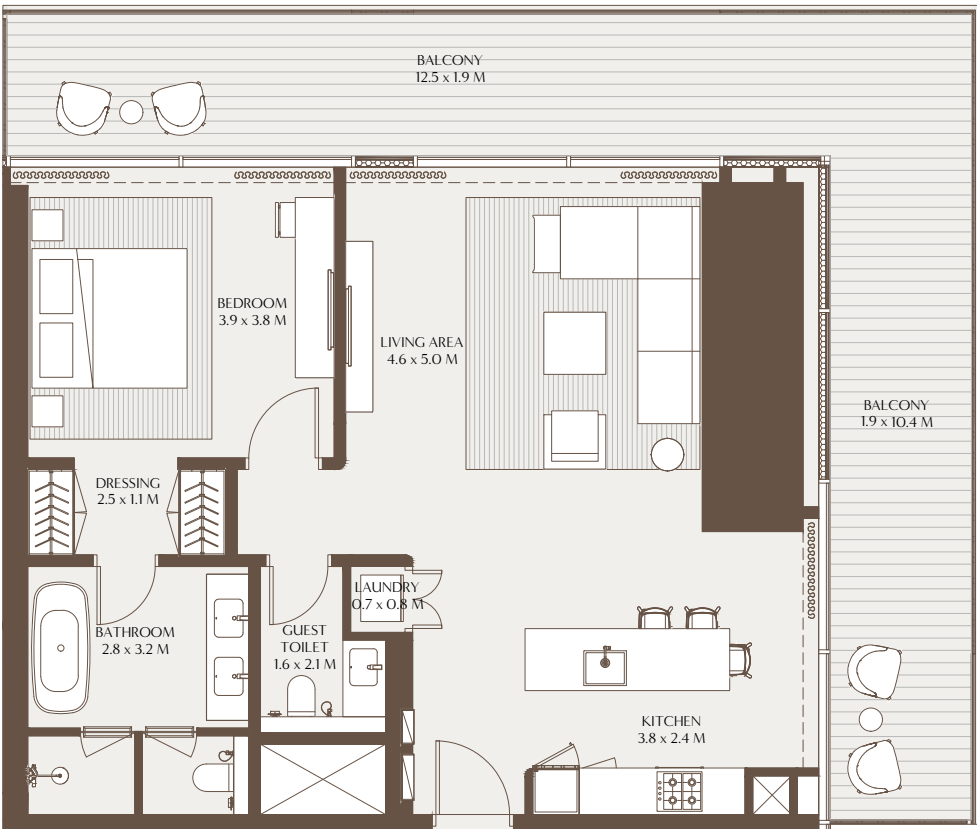


4TH TO 17TH FLOOR



The Elements - 1 Bedroom Residence D

Unit Area: 91.01 Sqm (979.62 Sqft) | Balcony Area: 39.68 Sqm (427.11 Sqft) | Total Area: 130.69 Sqm (1,406.73 Sqft)



4TH TO 17TH FLOOR

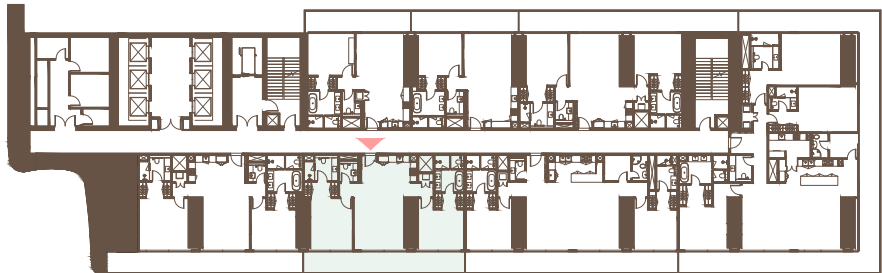
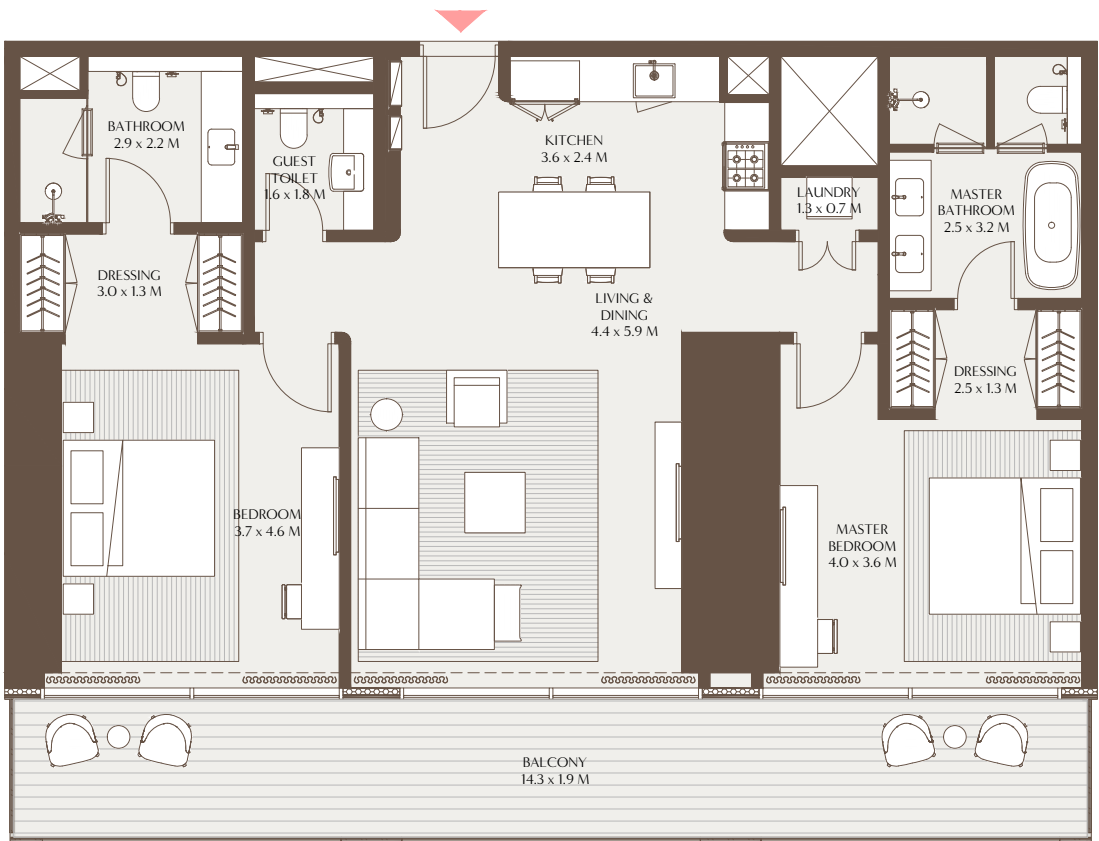


1-Measurements are indicative 'finish to finish' in Metric & Imperial excluding construction tolerance. 2-Plot/unit dimensions may vary from brochure, and unit types/plans may exist as mirrored versions; 3-All images used are for illustrative purposes only. 4-Unless stated otherwise, all fittings and interior decorative items shown are for illustrative purposes only. 5-The developer reserves the right to make alterations, at its absolute discretion, without any liability whatsoever up to the final 'as built' status.

1-Measurements are indicative 'finish to finish' in Metric & Imperial excluding construction tolerance. 2-Plot/unit dimensions may vary from brochure, and unit types/plans may exist as mirrored versions; 3-All images used are for illustrative purposes only. 4-Unless stated otherwise, all fittings and interior decorative items shown are for illustrative purposes only. 5-The developer reserves the right to make alterations, at its absolute discretion, without any liability whatsoever up to the final 'as built' status.

The Elements - 2 Bedroom Residence A

Unit Area: 117.75 Sqm (1,267.48 Sqft) | Balcony Area: 26.88 Sqm (289.29 Sqft) | Total Area: 144.63 Sqm (1,556.77 Sqft)



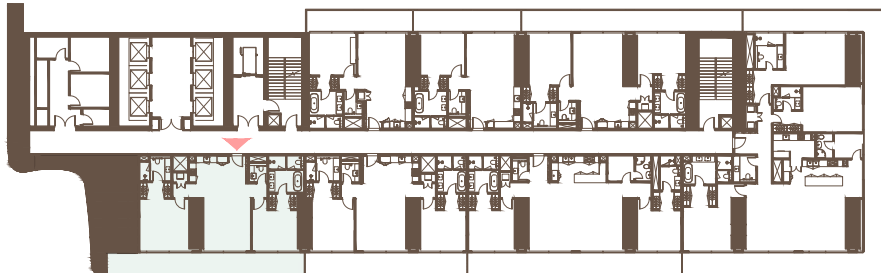
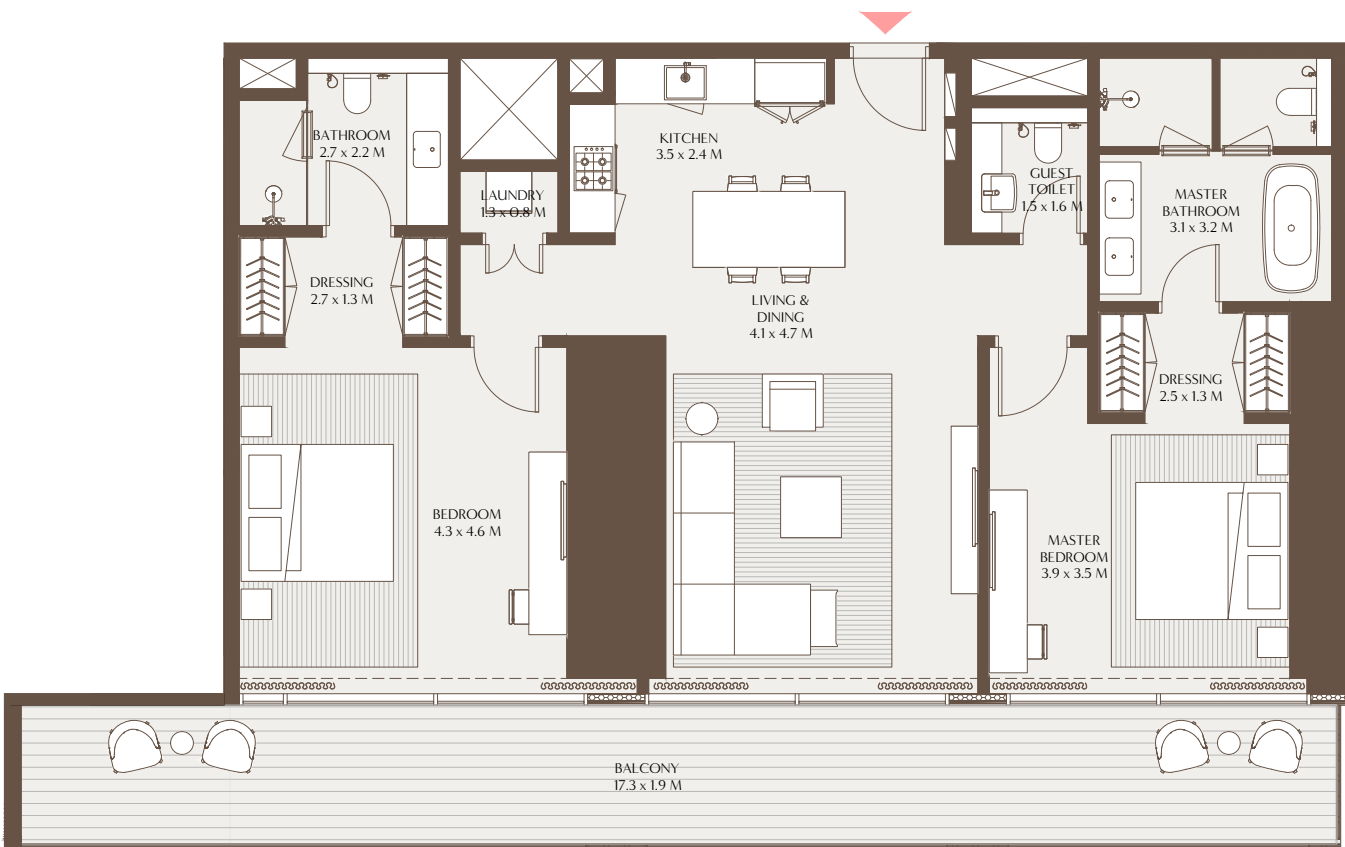
4TH TO 17TH & 19TH TO 29TH FLOOR



1-Measurements are indicative 'finish to finish' in Metric & Imperial excluding construction tolerance. 2-Plot/unit dimensions may vary from brochure, and unit types/plans may exist as mirrored versions; 3-All images used are for illustrative purposes only. 4-Unless stated otherwise, all fittings and interior decorative items shown are for illustrative purposes only. 5-The developer reserves the right to make alterations, at its absolute discretion, without any liability whatsoever up to the final 'as built' status.

The Elements - 2 Bedroom Residence B

Unit Area: 120.39 Sqm (1,295.88 Sqft) | Balcony Area: 32.90 Sqm (354.08 Sqft) | Total Area: 153.29 Sqm (1,649.96 Sqft)



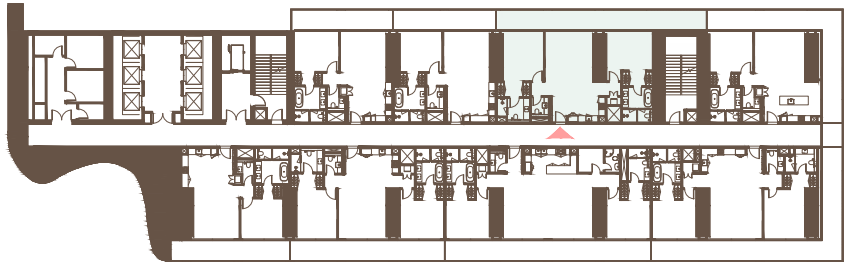
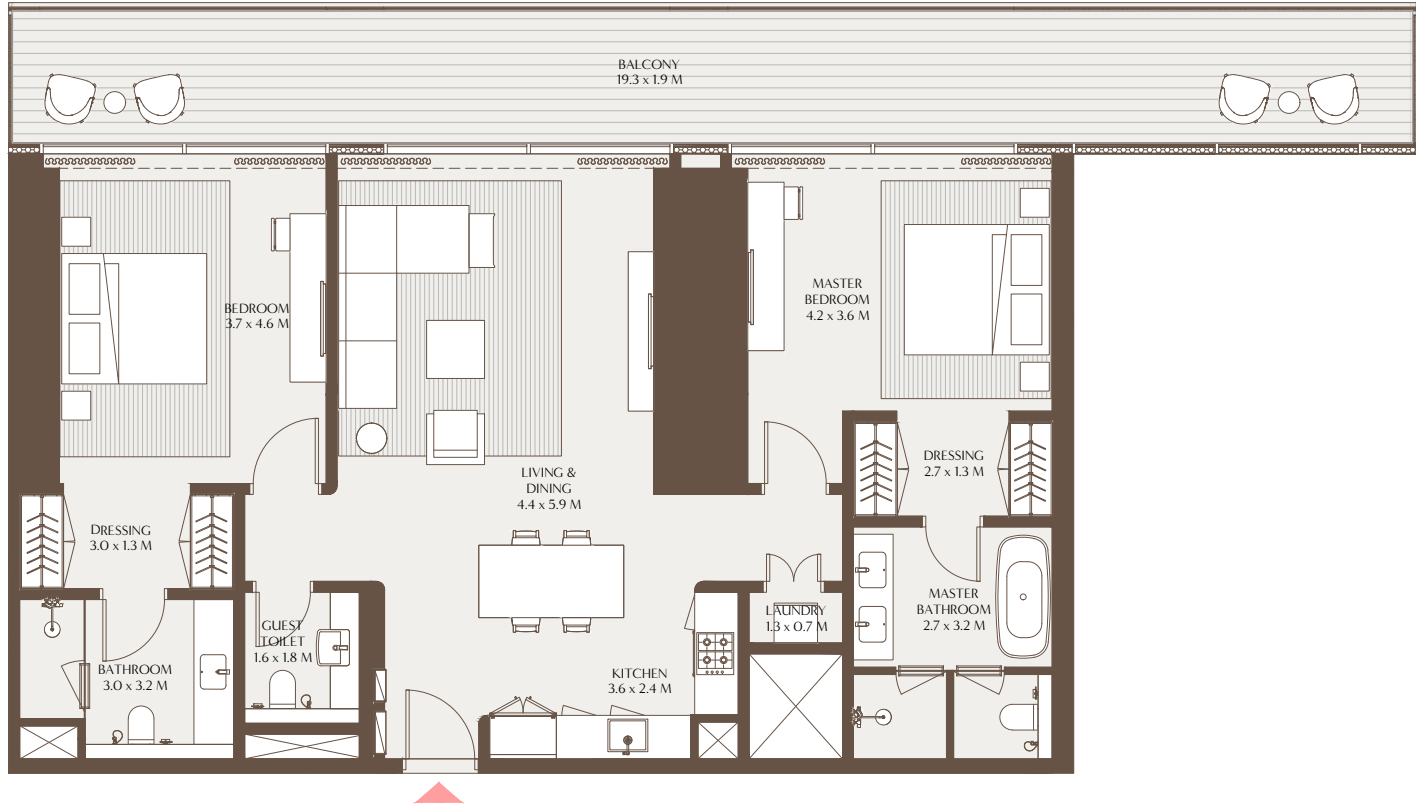
19TH TO 29TH FLOOR



1-Measurements are indicative 'finish to finish' in Metric & Imperial excluding construction tolerance. 2-Plot/unit dimensions may vary from brochure, and unit types/plans may exist as mirrored versions; 3-All images used are for illustrative purposes only. 4-Unless stated otherwise, all fittings and interior decorative items shown are for illustrative purposes only. 5-The developer reserves the right to make alterations, at its absolute discretion, without any liability whatsoever up to the final 'as built' status.

The Elements - 2 Bedroom Residence C

Unit Area: 123.69 Sqm (1,331.41 Sqft) | Balcony Area: 36.55 Sqm (393.39 Sqft) | Total Area: 160.24 Sqm (1,724.80 Sqft)



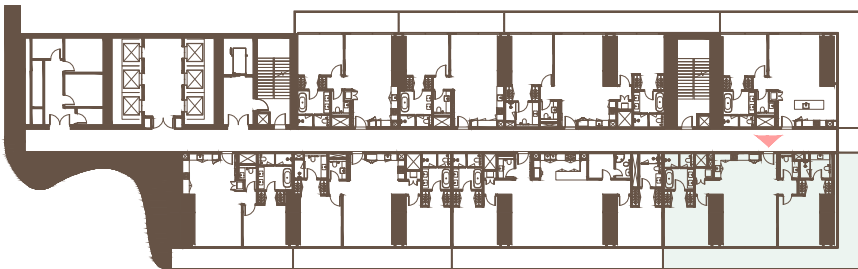
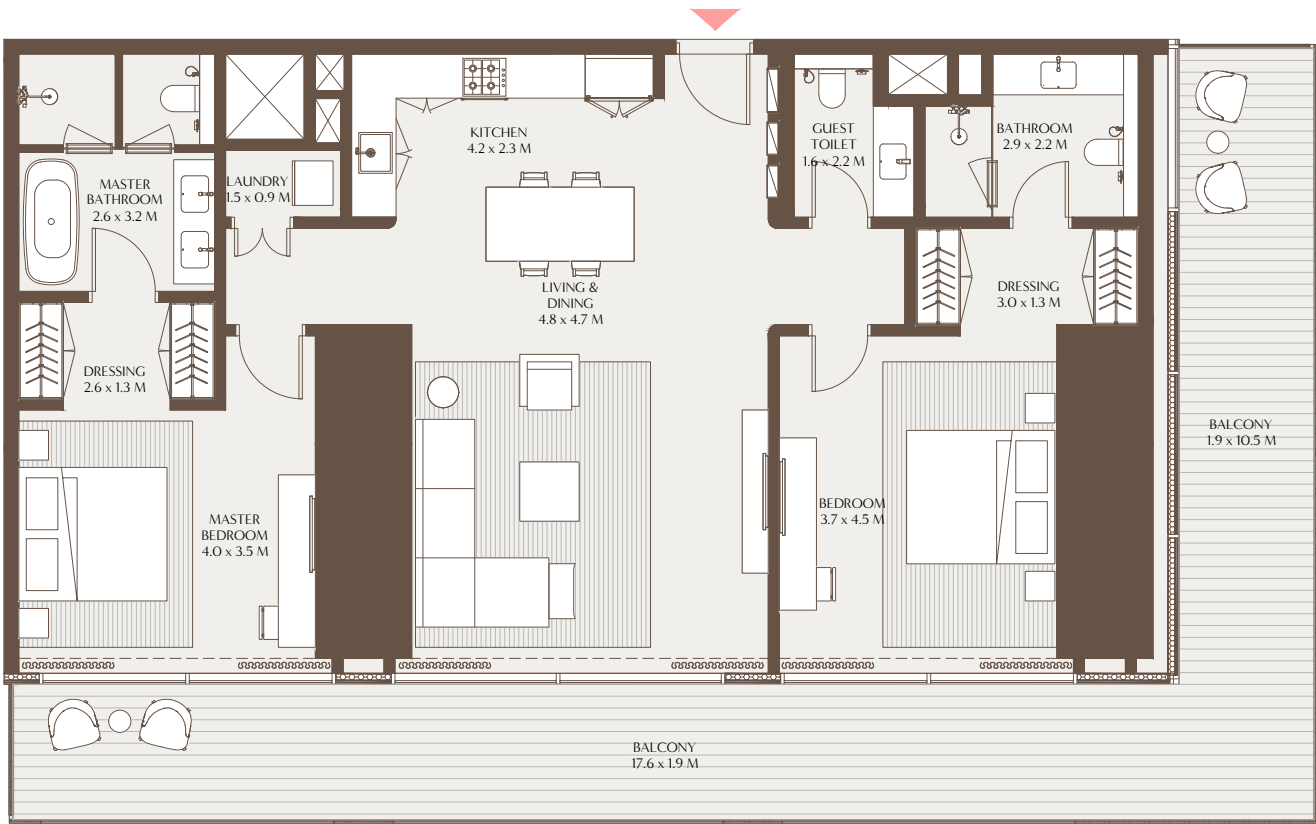
4TH TO 17TH, 19TH TO 29TH, 30TH TO 39TH,
41ST TO 47TH, 48TH TO 49TH FLOOR



1-Measurements are indicative 'finish to finish' in Metric & Imperial excluding construction tolerance. 2-Plot/unit dimensions may vary from brochure, and unit types/plans may exist as mirrored versions; 3-All images used are for illustrative purposes only. 4-Unless stated otherwise, all fittings and interior decorative items shown are for illustrative purposes only. 5-The developer reserves the right to make alterations, at its absolute discretion, without any liability whatsoever up to the final 'as built' status.

The Elements - 2 Bedroom Residence D

Unit Area: 131.90 Sqm (1,419.73 Sqft) | Balcony Area: 49.33 Sqm (531.03 Sqft) | Total Area: 181.23 Sqm (1,950.76 Sqft)



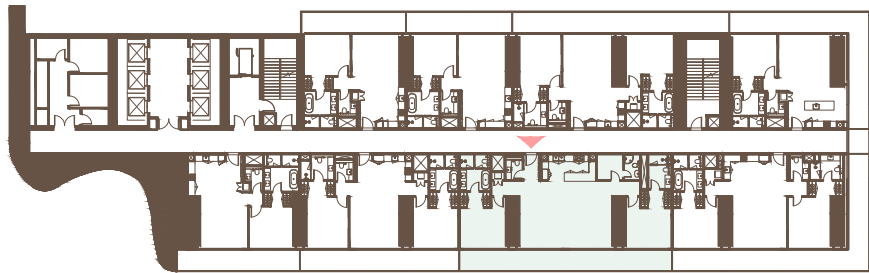
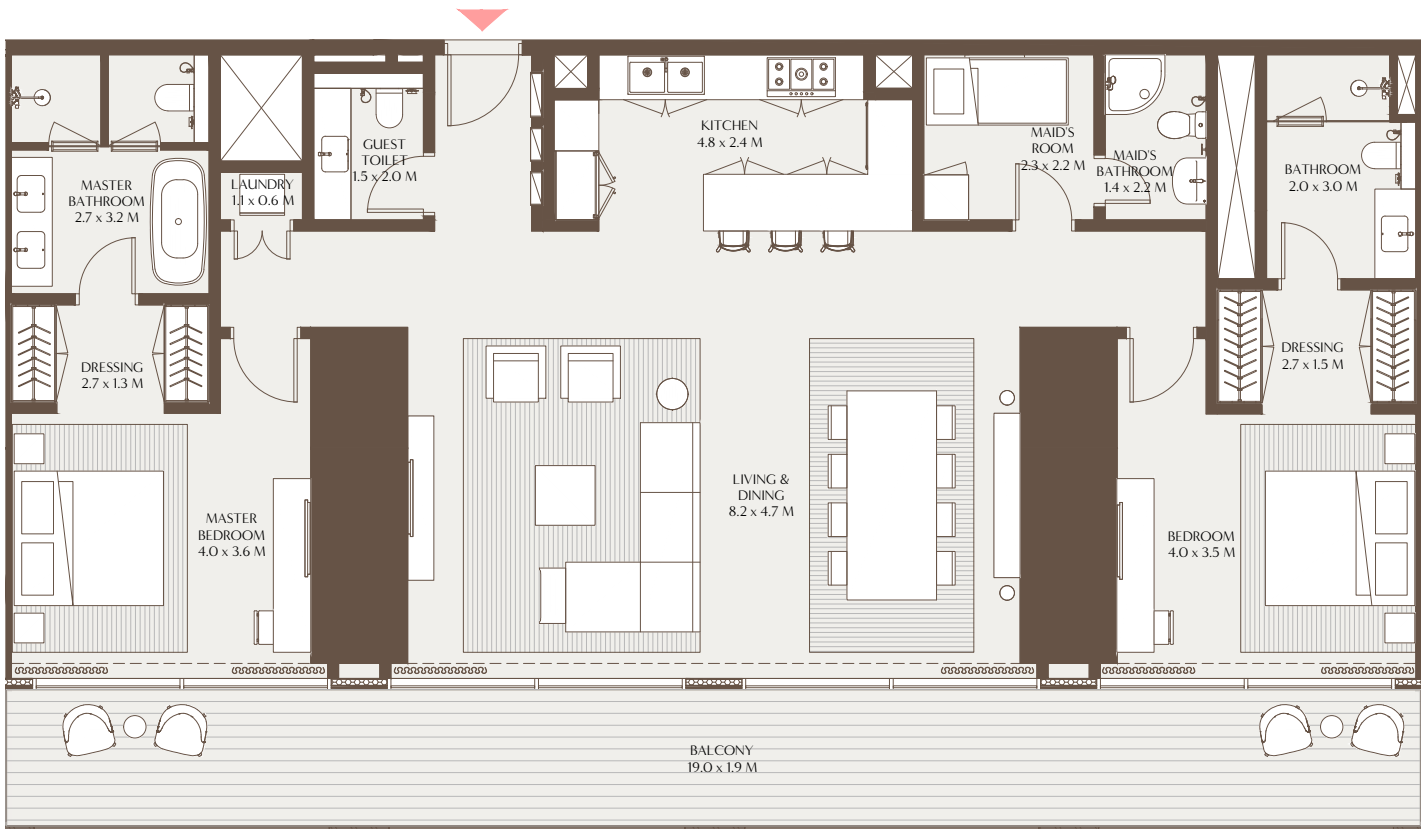
4TH TO 17TH FLOOR



1-Measurements are indicative 'finish to finish' in Metric & Imperial excluding construction tolerance. 2-Plot/unit dimensions may vary from brochure, and unit types/plans may exist as mirrored versions; 3-All images used are for illustrative purposes only. 4-Unless stated otherwise, all fittings and interior decorative items shown are for illustrative purposes only. 5-The developer reserves the right to make alterations, at its absolute discretion, without any liability whatsoever up to the final 'as built' status.

The Elements - 2 Bedroom Residence E

Unit Area: 157.08 Sqm (1,690.80 Sqft) | Balcony Area: 35.83 Sqm (385.67 Sqft) | Total Area: 192.91 Sqm (2,076.47 Sqft)

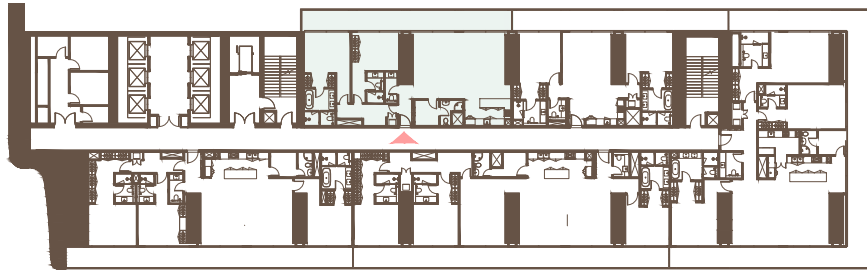
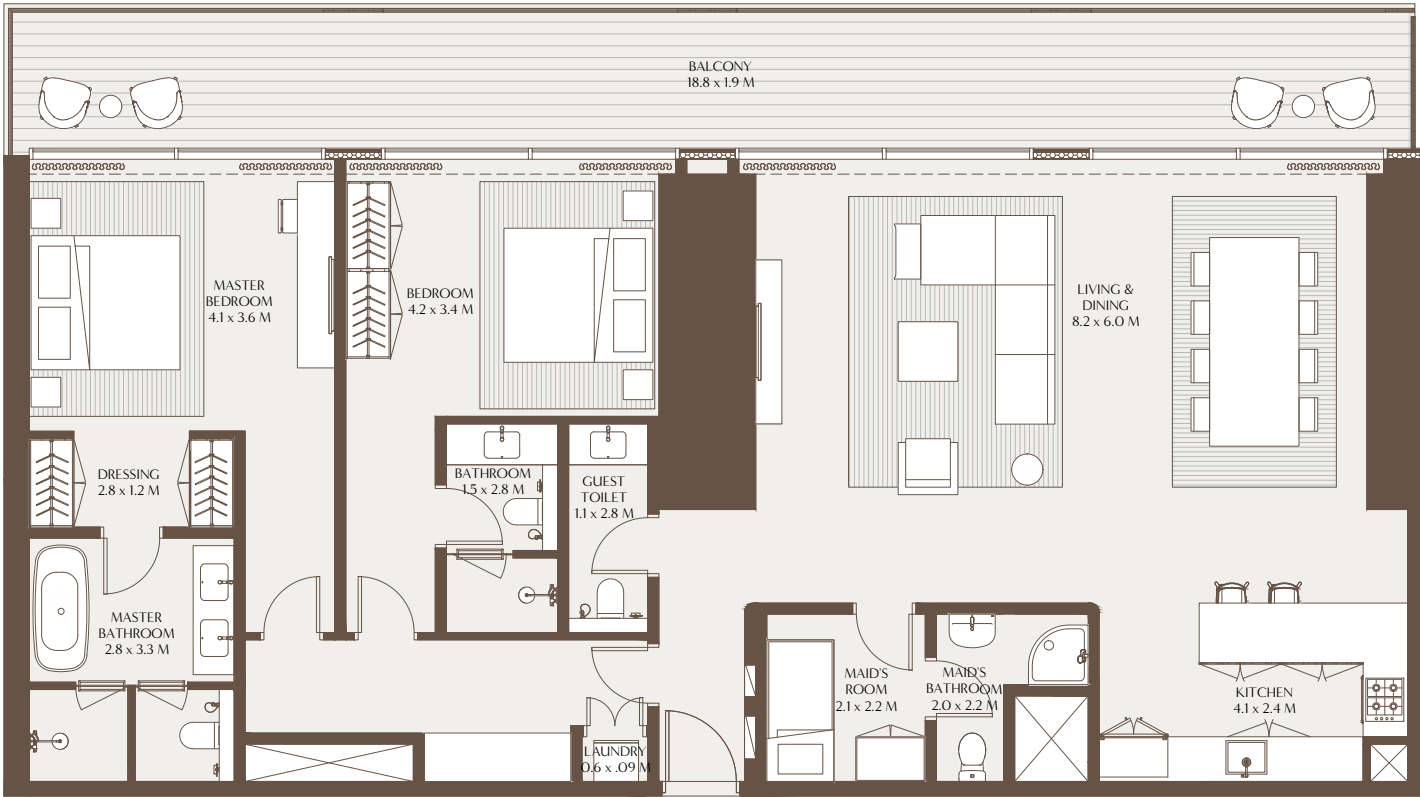


4TH TO 17TH, 19TH TO 29TH FLOOR



The Elements - 2 Bedroom Residence F

Unit Area: 158.52 Sqm (1,706.31 Sqft) | Balcony Area: 35.74 Sqm (384.73 Sqft) | Total Area: 194.26 Sqm (2,091.04 Sqft)



30TH TO 39TH, 41ST TO 47TH, 48TH TO 49TH FLOOR



1-Measurements are indicative 'finish to finish' in Metric & Imperial excluding construction tolerance. 2-Plot/unit dimensions may vary from brochure, and unit types/plans may exist as mirrored versions; 3-All images used are for illustrative purposes only. 4-Unless stated otherwise, all fittings and interior decorative items shown are for illustrative purposes only. 5-The developer reserves the right to make alterations, at its absolute discretion, without any liability whatsoever up to the final 'as built' status.

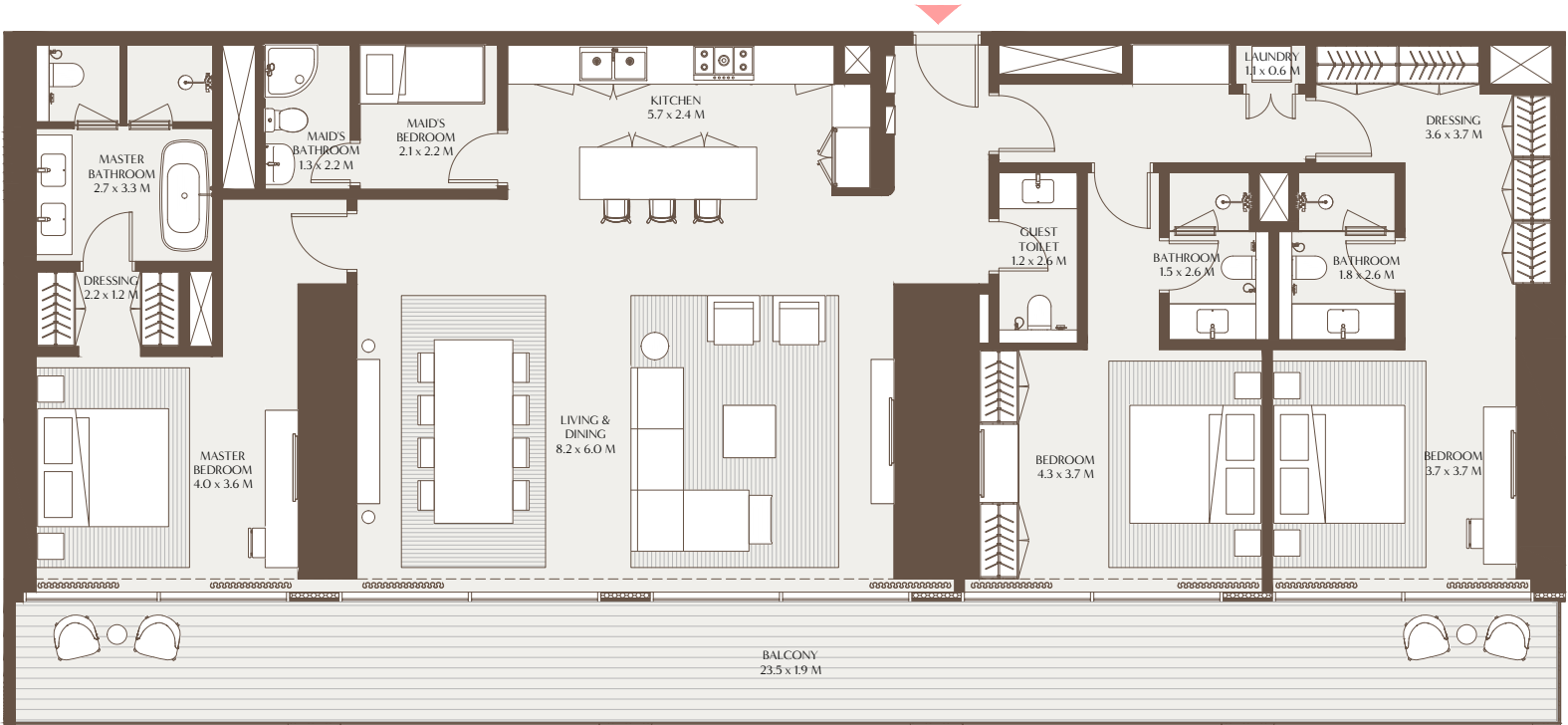
1-Measurements are indicative 'finish to finish' in Metric & Imperial excluding construction tolerance. 2-Plot/unit dimensions may vary from brochure, and unit types/plans may exist as mirrored versions; 3-All images used are for illustrative purposes only. 4-Unless stated otherwise, all fittings and interior decorative items shown are for illustrative purposes only. 5-The developer reserves the right to make alterations, at its absolute discretion, without any liability whatsoever up to the final 'as built' status.

The Elements - 3 Bedroom Residence A

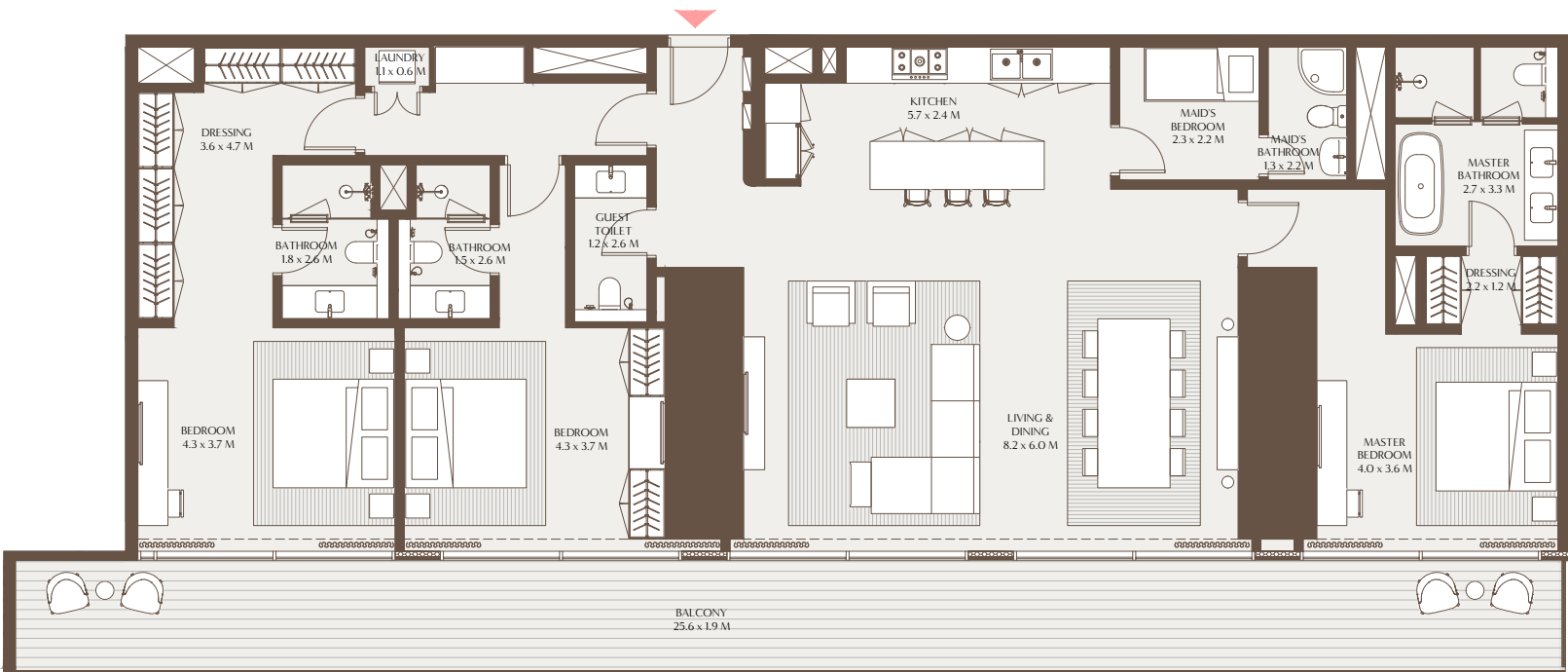
Unit Area: 195.48 Sqm (2,104.09 Sqft) | Balcony Area: 44.84 Sqm (482.62 Sqft) | Total Area: 240.31 Sqm (2,586.71 Sqft)

The Elements - 3 Bedroom Residence B

Unit Area: 197.28 Sqm (2,123.55 Sqft) | Balcony Area: 48.63 Sqm (523.45 Sqft) | Total Area: 245.91 Sqm (2,647.00 Sqft)



41ST TO 47TH FLOOR



30TH TO 39TH, 41ST TO 47TH FLOOR

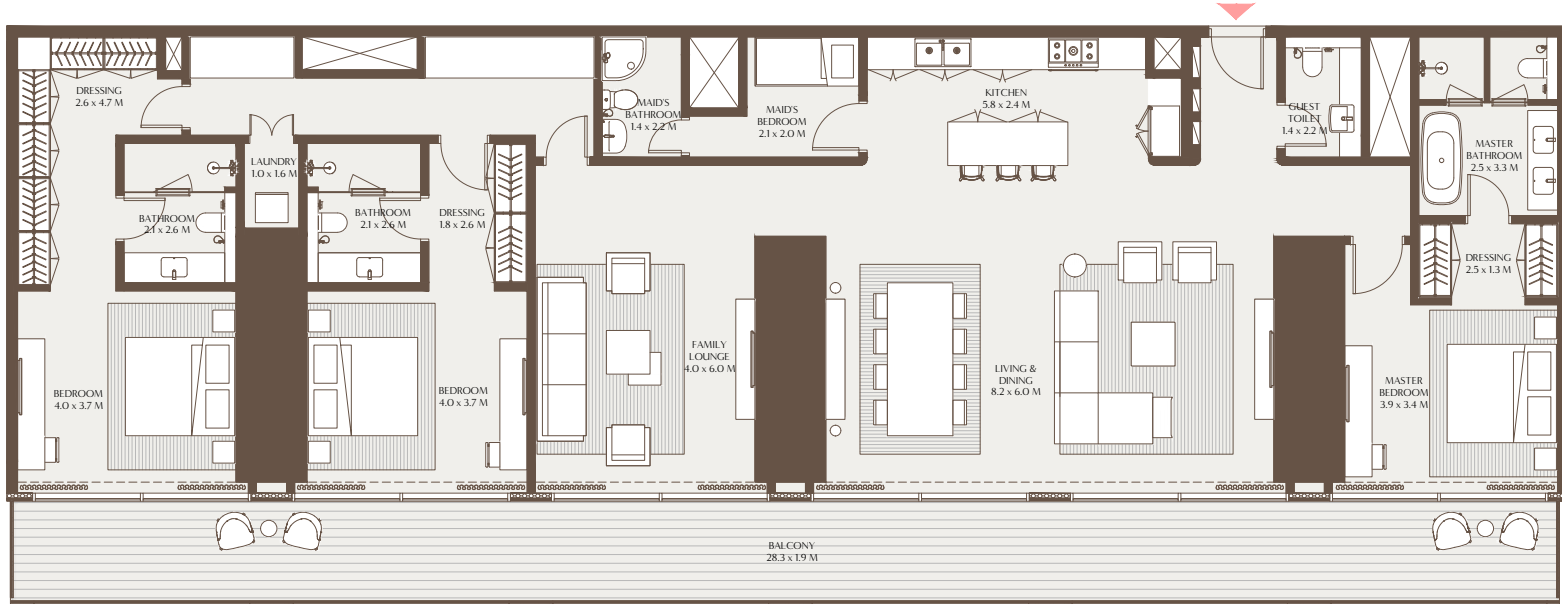


1-Measurements are indicative 'finish to finish' in Metric & Imperial excluding construction tolerance. 2-Plot/unit dimensions may vary from brochure, and unit types/plans may exist as mirrored versions; 3-All images used are for illustrative purposes only. 4-Unless stated otherwise, all fittings and interior decorative items shown are for illustrative purposes only. 5-The developer reserves the right to make alterations, at its absolute discretion, without any liability whatsoever up to the final 'as built' status.

1-Measurements are indicative 'finish to finish' in Metric & Imperial excluding construction tolerance. 2-Plot/unit dimensions may vary from brochure, and unit types/plans may exist as mirrored versions; 3-All images used are for illustrative purposes only. 4-Unless stated otherwise, all fittings and interior decorative items shown are for illustrative purposes only. 5-The developer reserves the right to make alterations, at its absolute discretion, without any liability whatsoever up to the final 'as built' status.

The Elements - 3 Bedroom Residence C

Unit Area: 236.85 Sqm (2,549.44 Sqft) | Balcony Area: 53.58 Sqm (576.70 Sqft) | Total Area: 290.43 Sqm (3,126.14 Sqft)

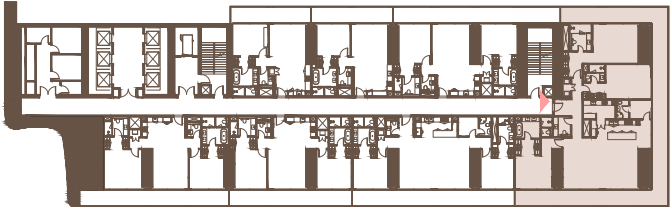
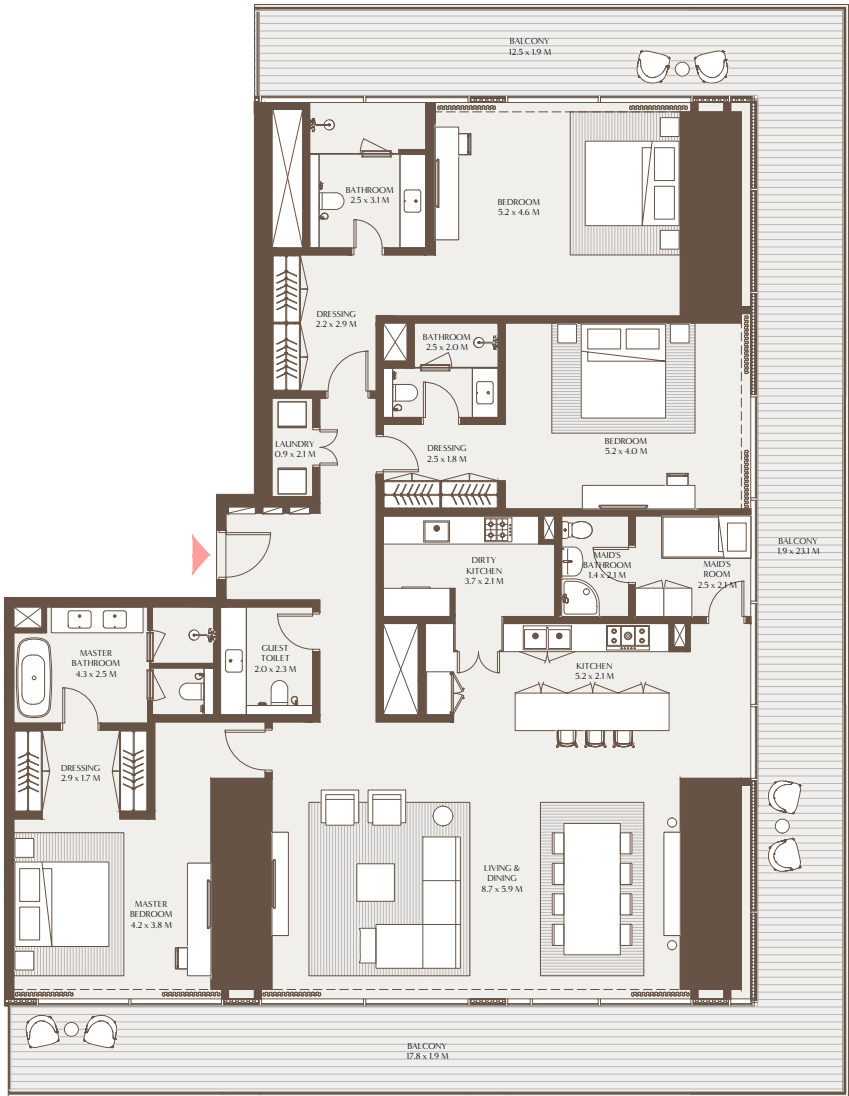


30TH TO 39TH FLOOR



The Elements - 3 Bedroom Residence D

Unit Area: 246.99 Sqm (2,658.59 Sqft) | Balcony Area: 93.49 Sqm (1,006.33 Sqft) | Total Area: 340.48 Sqm (3,664.92 Sqft)



19TH TO 29TH, 30TH TO 39TH FLOOR

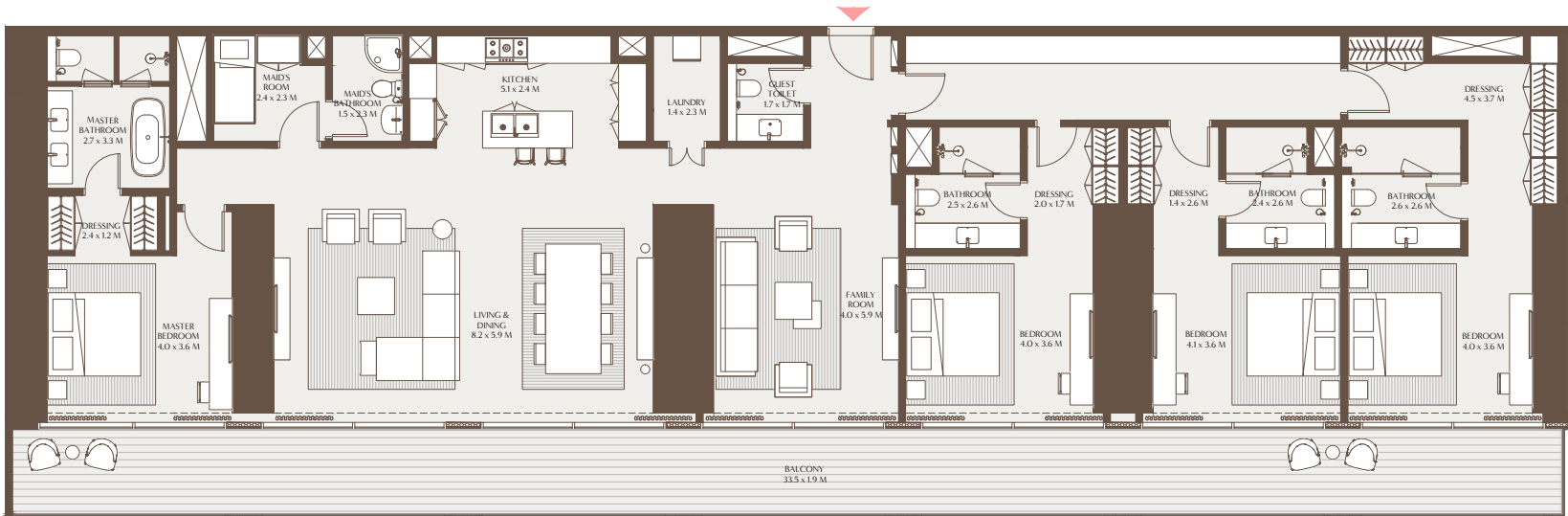


1-Measurements are indicative 'finish to finish' in Metric & Imperial excluding construction tolerance. 2-Plot/unit dimensions may vary from brochure, and unit types/plans may exist as mirrored versions; 3-All images used are for illustrative purposes only. 4-Unless stated otherwise, all fittings and interior decorative items shown are for illustrative purposes only. 5-The developer reserves the right to make alterations, at its absolute discretion, without any liability whatsoever up to the final 'as built' status.

1-Measurements are indicative 'finish to finish' in Metric & Imperial excluding construction tolerance. 2-Plot/unit dimensions may vary from brochure, and unit types/plans may exist as mirrored versions; 3-All images used are for illustrative purposes only. 4-Unless stated otherwise, all fittings and interior decorative items shown are for illustrative purposes only. 5-The developer reserves the right to make alterations, at its absolute discretion, without any liability whatsoever up to the final 'as built' status.

The Collections - 4 Bedroom Residence A

Unit Area: 275.43 Sqm (2,964.66 Sqft) | Balcony Area: 63.48 Sqm (683.28 Sqft) | Total Area: 338.91 Sqm (3,647.94 Sqft)



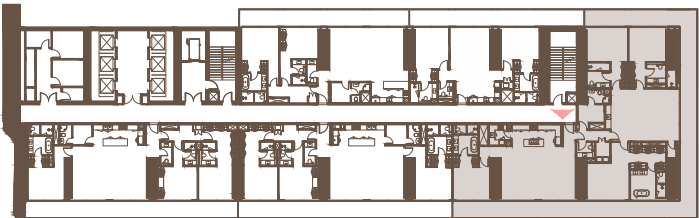
48TH TO 49TH FLOOR



1-Measurements are indicative 'finish to finish' in Metric & Imperial excluding construction tolerance. 2-Plot/unit dimensions may vary from brochure, and unit types/plans may exist as mirrored versions; 3-All images used are for illustrative purposes only. 4-Unless stated otherwise, all fittings and interior decorative items shown are for illustrative purposes only. 5-The developer reserves the right to make alterations, at its absolute discretion, without any liability whatsoever up to the final 'as built' status.

The Collections - 4 Bedroom Residence B

Unit Area: 325.38 Sqm (3,502.35 Sqft) | Balcony Area: 111.06 Sqm (1,195.45 Sqft) | Total Area: 436.44 Sqm (4,697.80 Sqft)



41ST TO 47TH FLOOR



1-Measurements are indicative 'finish to finish' in Metric & Imperial excluding construction tolerance. 2-Plot/unit dimensions may vary from brochure, and unit types/plans may exist as mirrored versions; 3-All images used are for illustrative purposes only. 4-Unless stated otherwise, all fittings and interior decorative items shown are for illustrative purposes only. 5-The developer reserves the right to make alterations, at its absolute discretion, without any liability whatsoever up to the final 'as built' status.

The Gravity House - 5 Bedroom Residence A

Unit Area: 443.33 Sqm (4,771.95 Sqft) | Balcony Area: 137.93 Sqm (1,484.64 Sqft) | Total Area: 581.26 Sqm (6,256.59 Sqft)

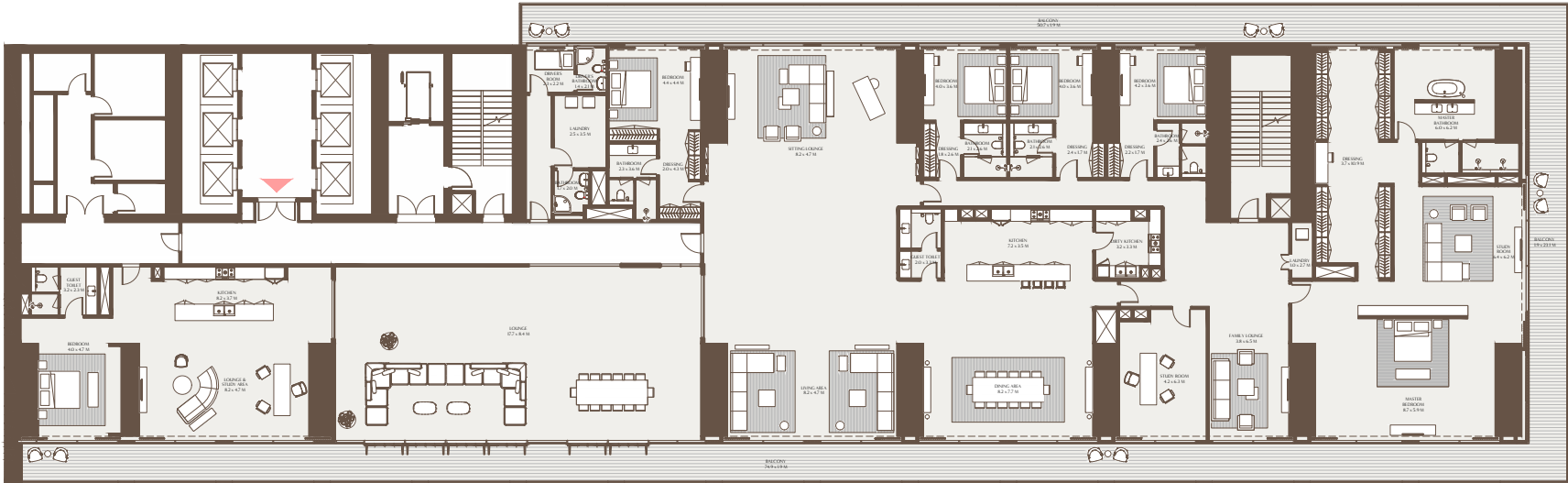


1-Measurements are indicative 'finish to finish' in Metric & Imperial excluding construction tolerance. 2-Plot/unit dimensions may vary from brochure, and unit types/plans may exist as mirrored versions; 3-All images used are for illustrative purposes only. 4-Unless stated otherwise, all fittings and interior decorative items shown are for illustrative purposes only. 5-The developer reserves the right to make alterations, at its absolute discretion, without any liability whatsoever up to the final 'as built' status.



The Sky Terrace - 6 Bedroom Penthouse A

Unit Area: 1,084.97 Sqm (11,678.52 Sqft) | Balcony Area: 274.05 Sqm (2,949.88 Sqft) | Total Area: 1,359.02 Sqm (14,628.40 Sqft)



50TH FLOOR

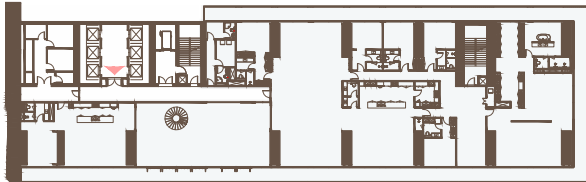
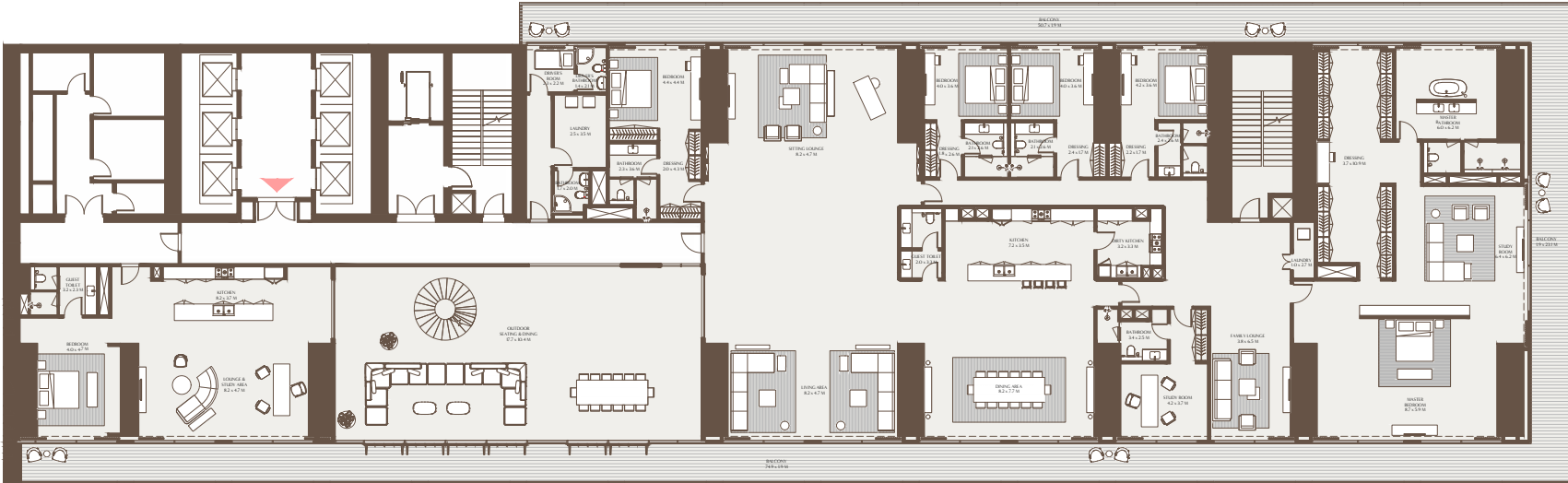


1-Measurements are indicative 'finish to finish' in Metric & Imperial excluding construction tolerance. 2-Plot/unit dimensions may vary from brochure, and unit types/plans may exist as mirrored versions; 3-All images used are for illustrative purposes only. 4-Unless stated otherwise, all fittings and interior decorative items shown are for illustrative purposes only. 5-The developer reserves the right to make alterations, at its absolute discretion, without any liability whatsoever up to the final 'as built' status.



The Observatory - 6 Bedroom Presidential Suite

Unit Area: 928.20 Sqm (9,991.10 Sqft) | Balcony + Roof Terrace: 1,271.06 Sqm (13,681.62 Sqft) | Total Area: 2,199.27 Sqm (23,672.72 Sqft)

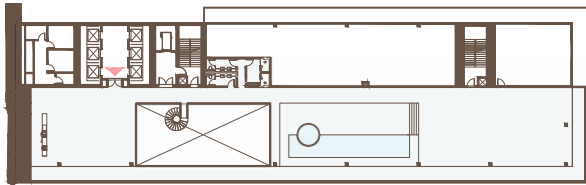
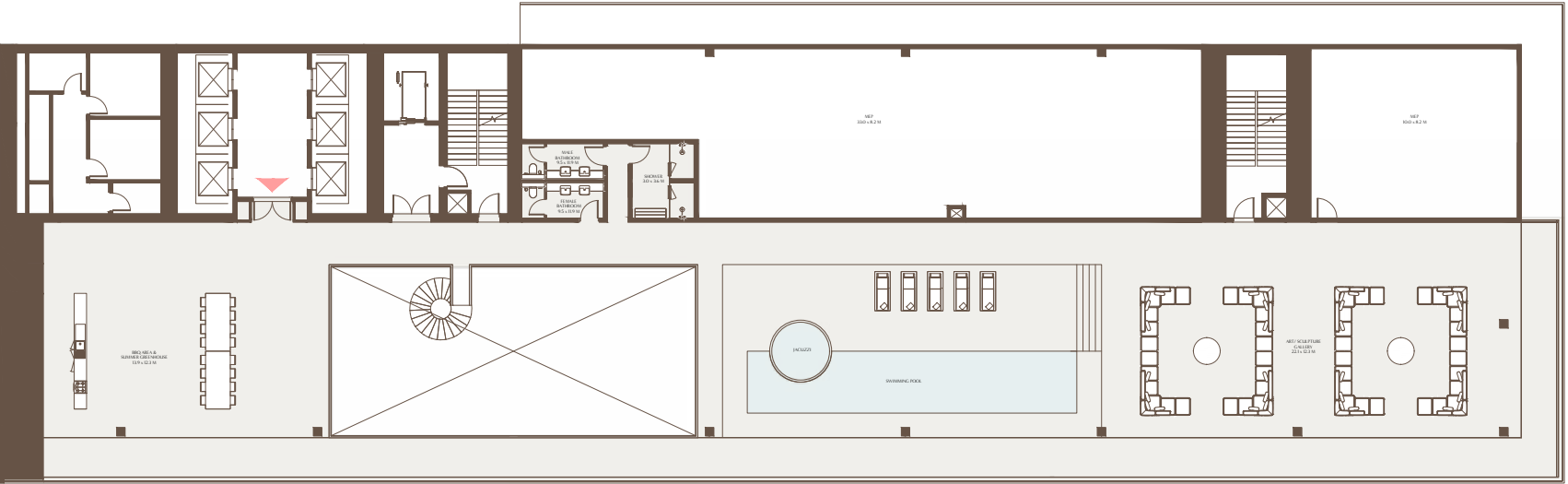


51ST FLOOR



1-Measurements are indicative 'finish to finish' in Metric & Imperial excluding construction tolerance. 2-Plot/unit dimensions may vary from brochure, and unit types/plans may exist as mirrored versions; 3-All images used are for illustrative purposes only. 4-Unless stated otherwise, all fittings and interior decorative items shown are for illustrative purposes only. 5-The developer reserves the right to make alterations, at its absolute discretion, without any liability whatsoever up to the final 'as built' status.

The Observatory - 6 Bedroom Presidential Suite Roof Terrace



ROOF FLOOR



1-Measurements are indicative 'finish to finish' in Metric & Imperial excluding construction tolerance. 2-Plot/unit dimensions may vary from brochure, and unit types/plans may exist as mirrored versions; 3-All images used are for illustrative purposes only. 4-Unless stated otherwise, all fittings and interior decorative items shown are for illustrative purposes only. 5-The developer reserves the right to make alterations, at its absolute discretion, without any liability whatsoever up to the final 'as built' status.



housebook Real Estate Company
since 2012 in the UAE

+971 (4) 412-5007

Partnership managers



Alevtina Kapustina



Svetlana Guseva

Office

Housebook Real Estate LCC

Marina Plaza, office 2502-01, Dubai, UAE

Company license: 1128098

ae.housebook.deals

partner@housebook.ae

