





# A Legacy of Architectural Excellence

As a distinguished Emirati property brand, Binghatti has carved a niche for itself by creating iconic landmarks that redefine the skyline.

The brand's diverse portfolio caters to a wide spectrum of discerning clientele, offering projects that range from accessible elegance to ultra-high-end luxury. Binghatti's signature design DNA, meticulously woven into each development, sets it apart on the global stage.

With over **79 projects** in the region valued at more than **AED 50 billion**, Binghatti is a leading privately held developer in the UAE. The company's impressive track record, including the successful delivery of **20,000** units prior to 2024, underscores its dedication to crafting exceptional living spaces.

Through groundbreaking collaborations with prestigious luxury brands such as **BUGATTI, Mercedes-Benz, and Jacob & Co.**, Binghatti continues to push boundaries and set new benchmarks in the world of branded real estate.



# *THE APEX OF WHOLENESS*

In the centre of Jumeirah Village Circle, a new icon ascends. Not merely a structure, but a profound statement reaching for the sky itself. This is Binghatti Circle, where the very essence of form finds its ultimate, luxurious expression.

It stands as a beacon for those who seek not just a home, but a complete world. A place where the hum of the city yields to a serene, contemplative cadence, enveloping all within its embrace.







## *ANTHEMIC IN COMPOSITION*

Circle is design made whole, a continuous line of architectural craft. Its commanding silhouette, an interplay of curves and elevations, seamlessly blends with the JVC skyline, yet stands distinct with its unique and captivating exterior.

Linger a moment longer, and witness how the concept of unity is sculpted in light and form.



# PROJECT FACTS

PROPERTY TYPE:

*Residential, Retail & Commercial*

PLOT AREA:

*6421.58 SQ.M / 69121.24 SQFT*

DESCRIPTION:

*2B + G + 4P + 58 FLOORS + 3 MECH. +  
3 STR. + ROOF*

NUMBER OF UNITS:

*Studio: 250*

*1 Bedroom: 504*

*2 Bedroom: 16*

*3 Bedroom: 6*

TOTAL UNITS:

*Residential Units: 776*

*Offices: 31*

*Shops (Ground Floor): 15*







## *A LANDMARK THAT SURROUNDS*

Circle is more than a mere place to live; it's a soaring gesture. Step into a world where every detail is crafted to ease the mind and nurture the soul.

Feel the weight of the world dissolve as you lose yourself in every perfectly held detail, a sanctuary designed to envelop you in complete wholeness.





## *CONNECTED TO THE CITY, GROUNDED IN SHAPE*

Circle enjoys a unique sense of connectivity, where the city's possibilities are within your grasp. From its profound core, vibrant districts, unmatched retail destination and esteemed educational institutions unfold. Healthcare facilities are moments away, grounding every aspect of life in convenience.

Here, the iconic vista of Dubai and its cherished landmarks become not just sights, but an extension of your own world.







*A WORLD OF RENEWAL,  
ENCIRCLED IN LUXURY*



SWIMMING POOL



INDOOR GYM



JOGGING TRACK



PADDLE COURT



BASKETBALL  
COURT



KIDS PLAY  
AREA



CABANAS &  
LOUNGES



GREEN  
LANDSCAPING



SMART HOME  
FEATURES





## *CRAFTED WITH PRECISION, DESIGNED TO INSPIRE*

Circle is a testament to Binghatti's unwavering commitment to quality and craftsmanship. Each residence is meticulously crafted within and throughout, a promise made real to lightness and elegance.

Embracing energy-efficient building practices and utilising sustainable high-end materials & finishing throughout, Circle reflects a deep dedication to harmony and perpetual value. This profound geometry, continuously unfolding, is designed to inspire a complete way of life.



## *DESIGN DETAILS*

Explore the design nuances that set Circle apart. From the fluid lines of its towering facade – a unique architectural interpretation of the circle – to the carefully curated interiors, every element is a testament to Binghatti's passion for creating spaces that inspire.

Feel the smooth coolness of polished surfaces against the warmth of bespoke finishes, a tactile hint that invites you to linger that little longer. The undulating form, symbolising perpetual motion, ensures a dynamic interplay of light and shadow at every hour.















## *AN INVESTMENT IN DEFINITIVE PRESENCE*

An Investment in Definitive Presence

Circle represents a compelling investment opportunity, rooted in freehold ownership in designated areas within one of the safest cities in the world. As the tallest building in JVC, it offers strong historical appreciation in property values and high rental yield potential.

JVC's fast-paced growth, supported by ongoing infrastructure and ambitious development plans, is expected to drive both property value increases and enhanced rental yields. Its strong demand as a sought-after residential area ensures reliable rental income from professionals, families and young couples alike.

Advantages for foreign investors include no property tax and -10year Golden Visa eligibility, solidifying Circle as a truly brilliant investment in a definitive presence.





*BESPOKE LIVING*  
*BINGHATTI STYLE*



PROPERTY  
MANAGEMENT



UNIT RESALE



PARKING SALE



HOLIDAY  
HOMES



ANNUAL  
MAINTENANCE



FURNITURE  
PACKAGES



One Scan All Solution



Binghatti



Binghattiofficial



Binghatti



Binghatti

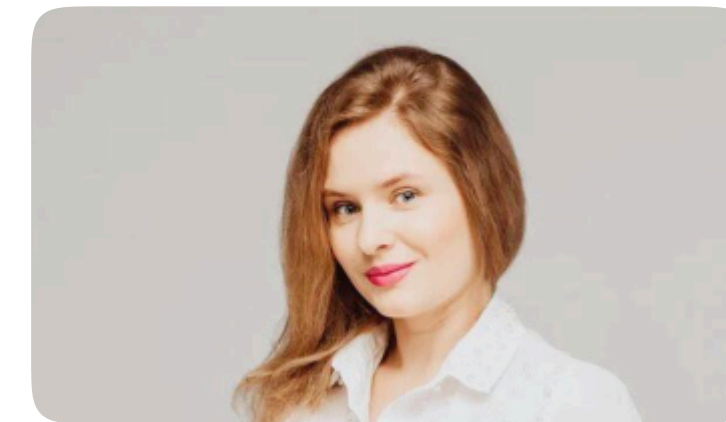




**housebook** Real Estate Company  
since 2012 in the UAE

**+971 (4) 412-5007**

Partnership managers



Alevtina Kapustina



Svetlana Guseva

## Office

Housebook Real Estate LCC

Marina Plaza, office 2502-01, Dubai, UAE

Company license: 1128098

[ae.housebook.deals](https://ae.housebook.deals)

[partner@housebook.ae](mailto:partner@housebook.ae)

