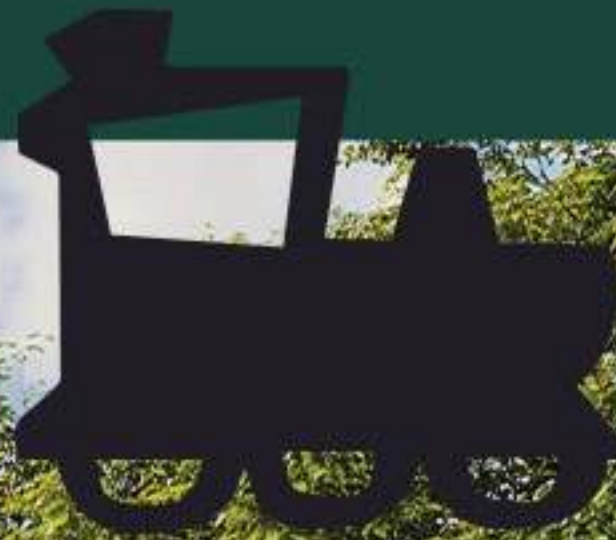




CHANTAN   
BY BIOGRAPI

CHANTAN CONNECTS US



ABOUT CHANTAN

The multifunctional residential project "**Chantan**" comprises of two blocks: an 8-story building and a 19-story building. The project integrates residential and commercial spaces and is situated in a historically significant location, facing Mushthaid Garden.

- Ground floor: Commercial area
- Floors 1-18: Residential living spaces
- Total of 215 apartments
- Project heights: Block 1 - 28.50 meters, Block 2 - 69.90 meters
- Apartment ceiling height: 3 meters
- Two levels of parking accommodating 83 cars
- Three premium-quality, high-capacity elevators
- Distribution of apartments: 1-7 floors have 20 apartments each, floors 8-17 have 7 apartments each and floor 18th - 5 apartments.



CHANTAN FACADE

Chantan is a unique and sophisticated project where the facade material plays a crucial role in creating its special appearance.

The project consists of 2 blocks, with the first block covered in exquisite Italian terracotta, and the second block adorned with facade stone. This, along with sustainability, gives the project an outstanding appearance.

Both cladding materials are of the highest quality. Terracotta is highly resistant to temperature and ultraviolet radiation, retaining its original appearance for many years. Similarly, the facade stone is characterized by its exceptional resistance to external factors and maintains its appearance for a long time.





LOBBY WITH
CONCIERGE SERVICE



GREEN ZONE



PADDLE
COURT



CAFE



PHARMACY



PLAYGROUND



SUPERMARKET

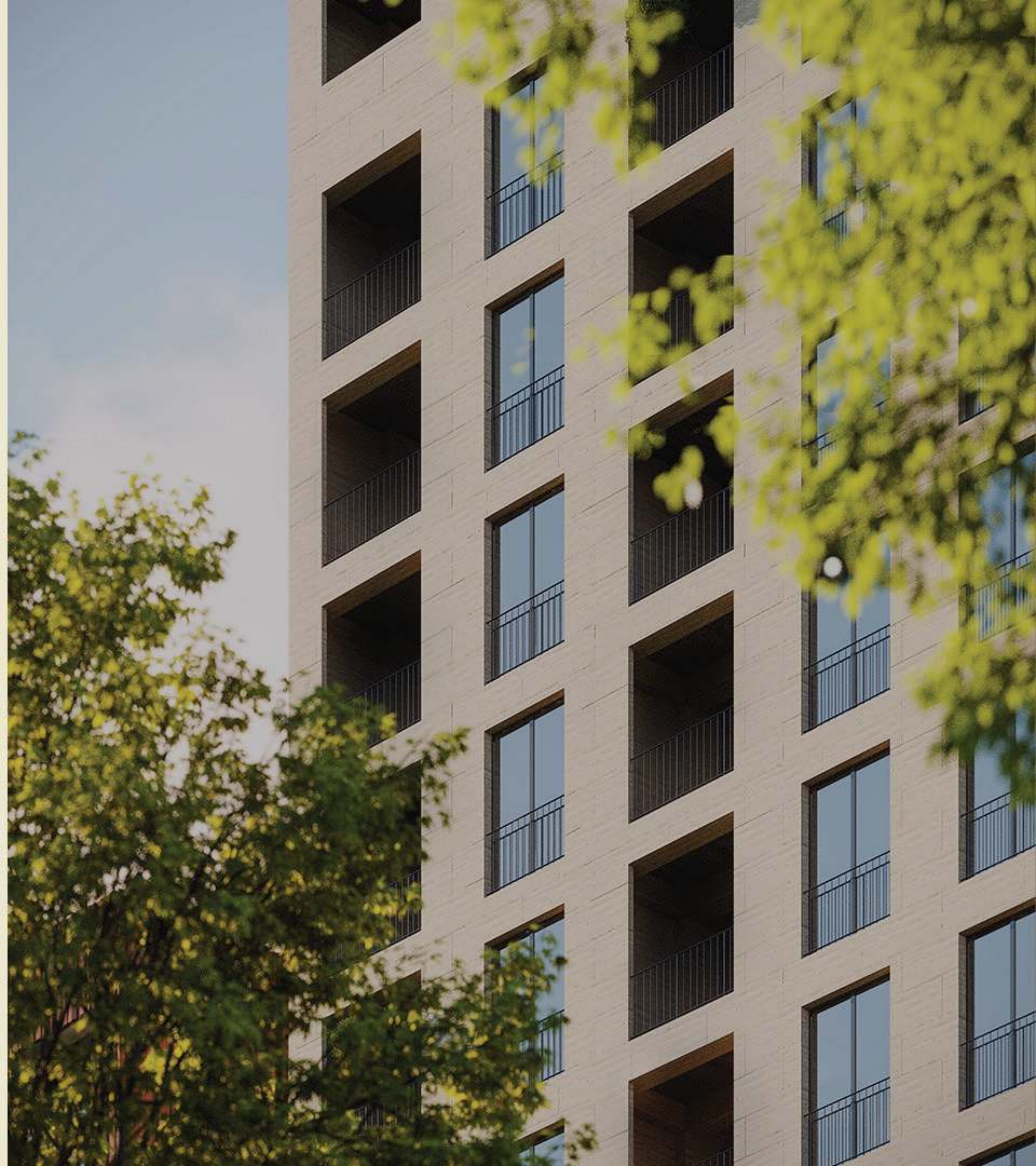


FITNESS CENTER

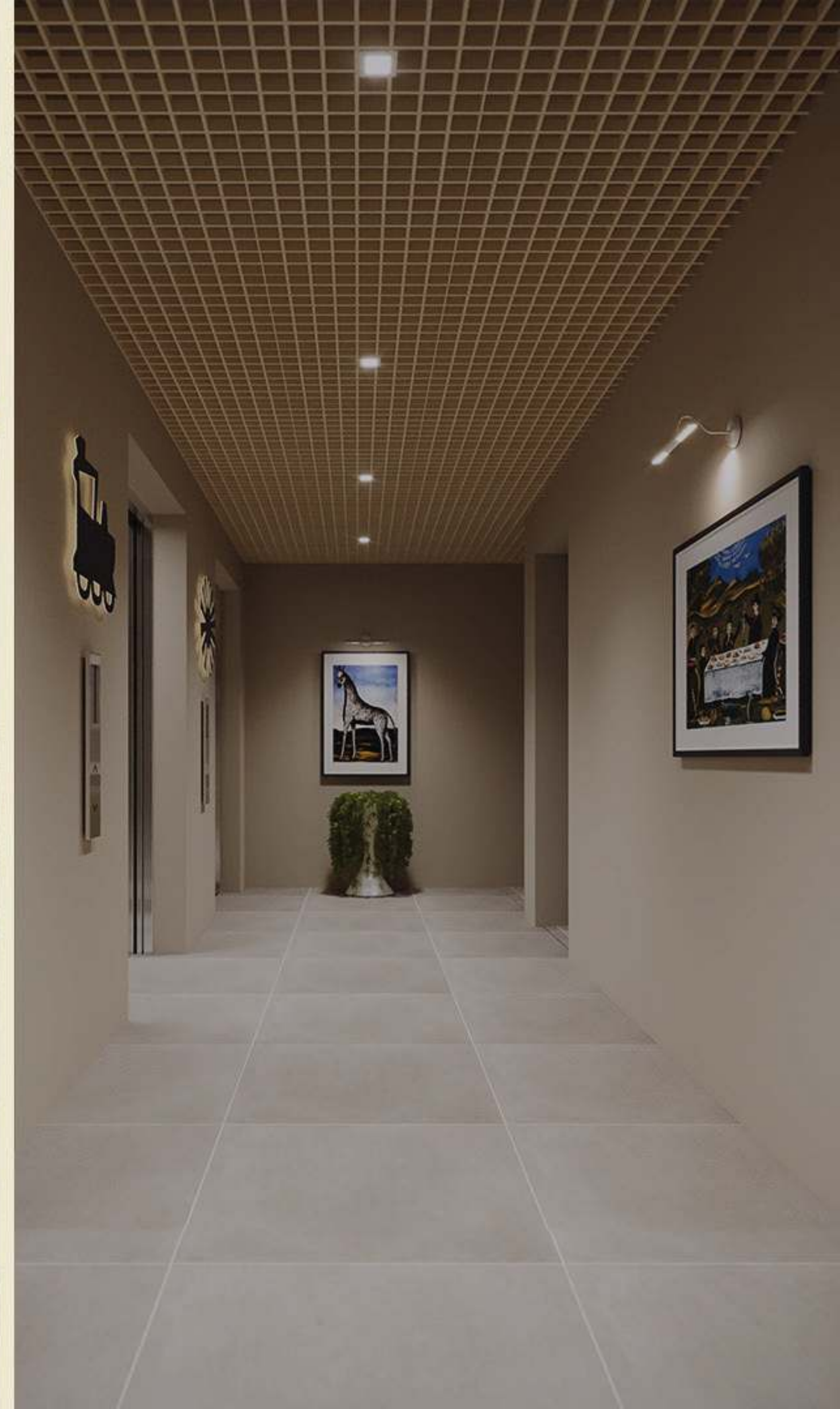


DRY CLEANING









A modern fitness center with various exercise machines and a large window. The room is well-lit with circular pendant lights. In the foreground, there is a rack of dumbbells. The background features a row of treadmills and elliptical machines. The ceiling has exposed ductwork and pipes. The floor is a light-colored, polished surface.

FITNESS CENTER



DRY CLEANING



SUPERMARKET



PARKING

A blue paddle court with a net and a fence, with a modern building in the background. The court is surrounded by a chain-link fence, and a modern building with large windows and a wooden facade is visible in the background. The text "PADDLE COURT" is overlaid in the center of the image.

PADDLE COURT



CAFE-RESTAURANTS

A wide, paved walkway made of grey and brown rectangular tiles leads into a lush green area. On the left, there are dense green hedges and trees with reddish-brown leaves. On the right, there are more green hedges, a black trash bin, and a white utility pole. In the background, a modern building with many windows is visible under a clear sky. The text "3400 SQ.M GREEN ZONE" is overlaid in the center of the path.

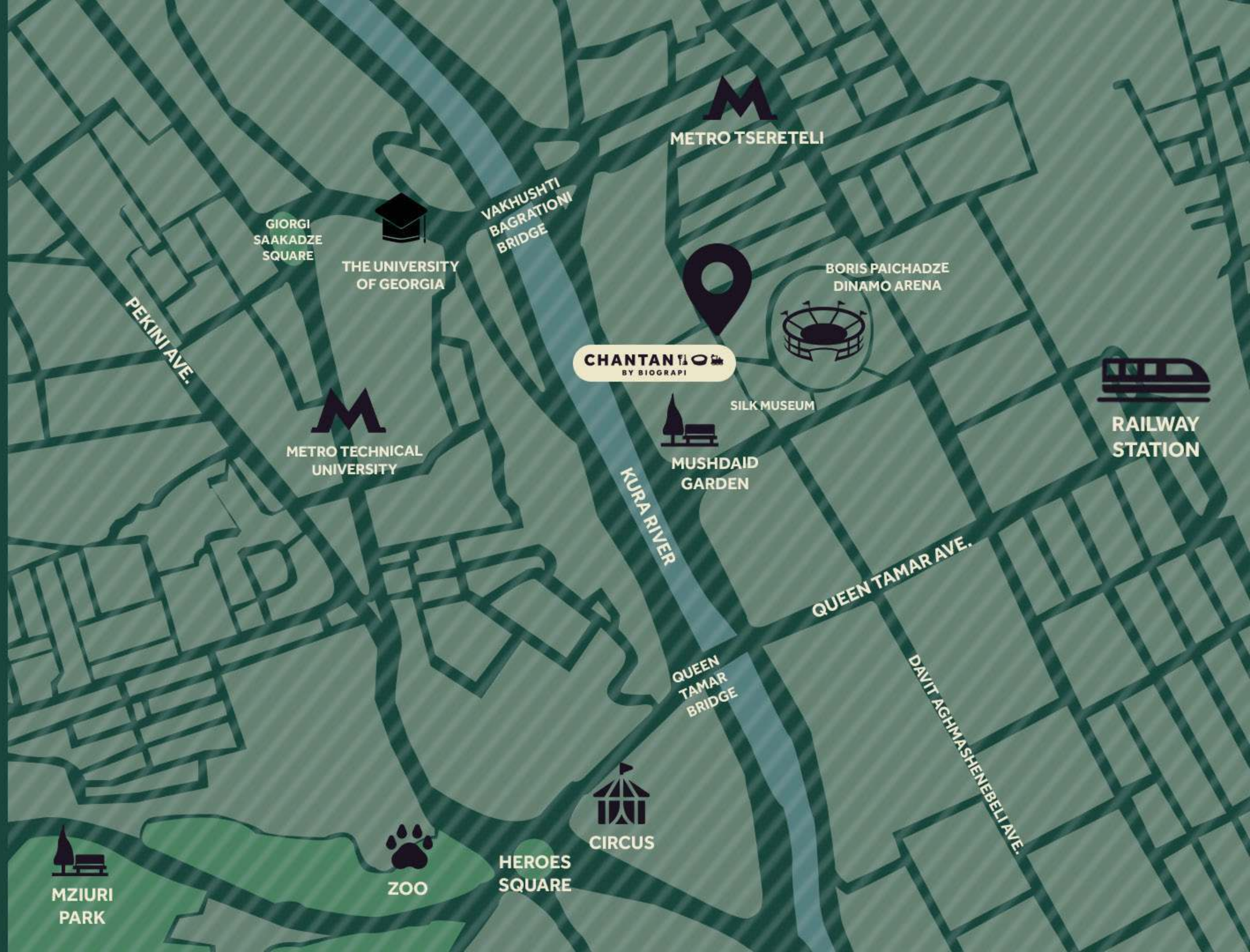
3400 SQ.M GREEN ZONE

PLAYGROUND

A vibrant playground set on a dark rubber mat. The equipment includes a blue and yellow climbing frame with a horizontal bar, a red and blue slide, a red and green slide, and a multi-colored tower with a yellow flag on top. The background shows a white fence, green trees, and a cloudy sky.

EXCEPTIONAL LOCATION

Chantan is a multifunctional residential complex located in the oldest district of Tbilisi, Didube, situated in front of Mushthaid Garden on N1a/N3 Mayakovsky Street.



ENERGY EFFICIENCY AND SAFETY

Chantani is an energy-efficient building that consumes less energy for heating and cooling, leading to significant annual utility bill savings. Insulation materials play a crucial role in Chantan's design. Equipping spaces with sound insulation systems not only maintains warmth and a cozy atmosphere but also improves productivity and focus, creating a quiet and more private environment. The project adheres to all safety compliance standards: The construction quality and reliability, developed by a team of experts, are based on various studies.

CHANTANI HAS PARTNERED WITH TOP-TIER COMPANIES:

Meinhardt - General Engineering Safety - The international expert group

Acustico - Acoustic Planning and Compliance with Norms



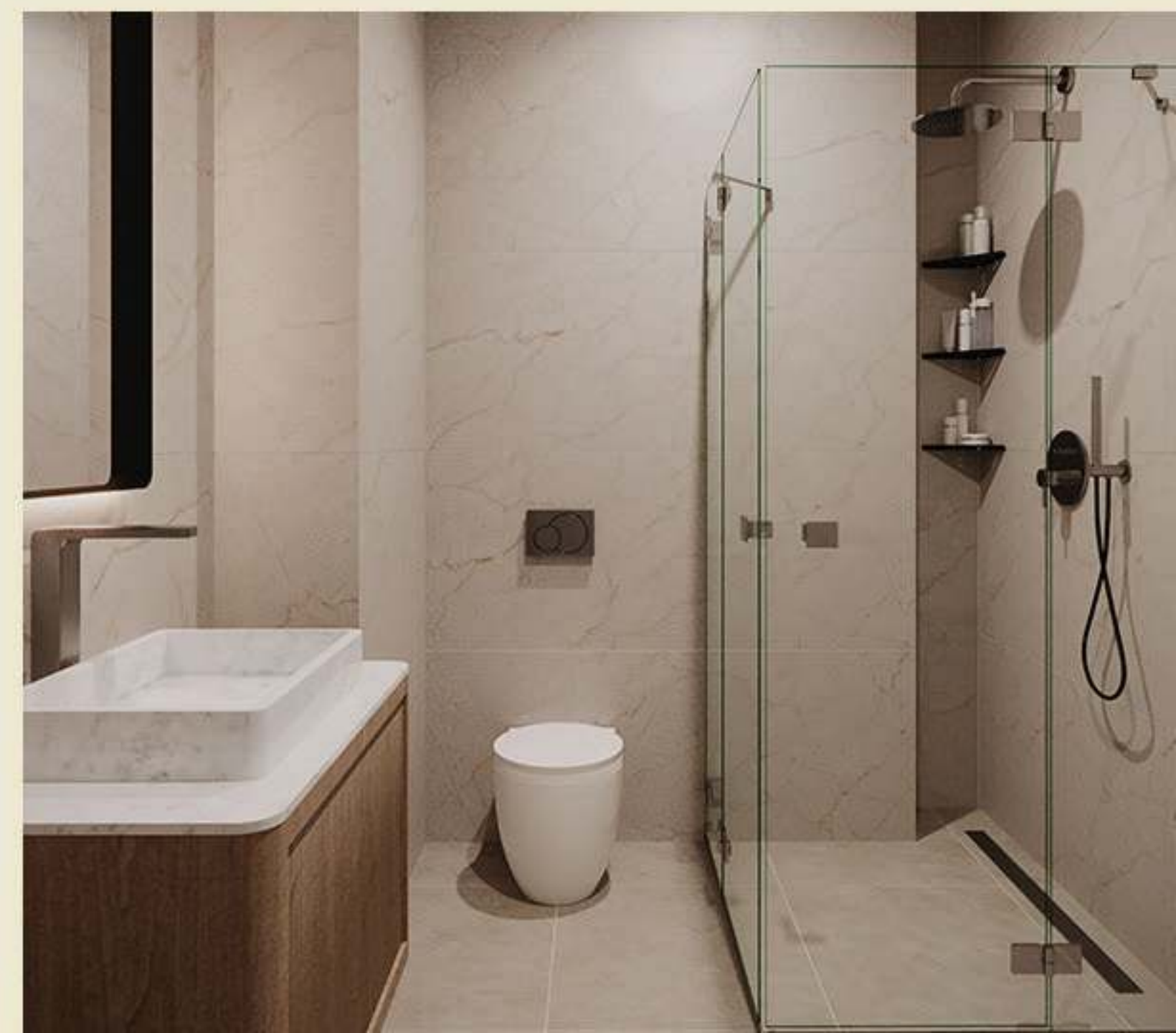
CHANTAN VIEWS



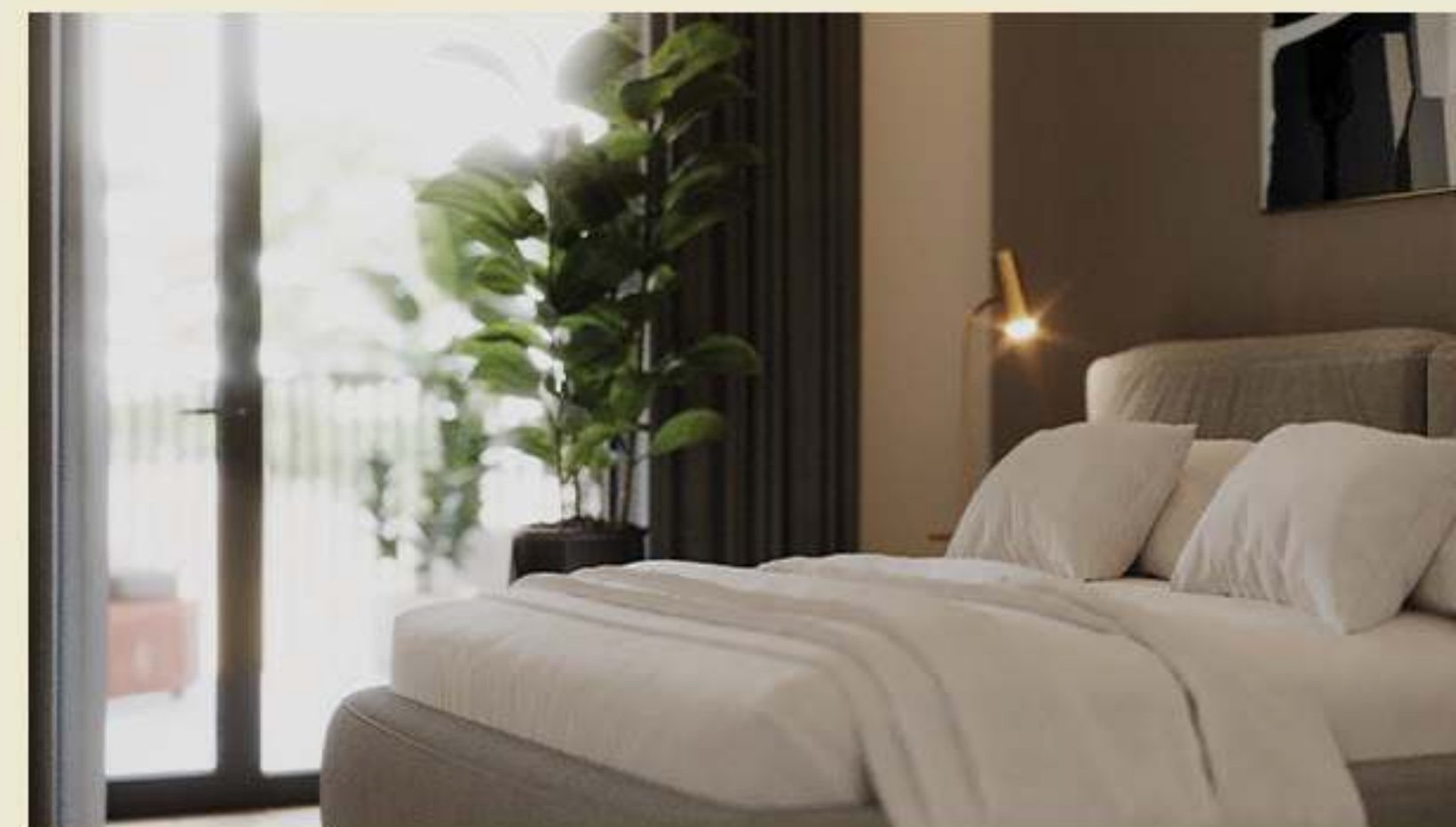
CHANTAN VIEWS



სტუდიო



1 BEDROOM



2 BEDROOM



DELIVERY TERMS AND CONDITIONS

CHANTANI OFFERS FLEXIBLE PAYMENT TERMS

- INTERNAL CREDIT WITHOUT DOWNPAYMENT
- BANK MORTGAGE LOAN
- DISCOUNT ON CASH PAYMENT

COMPLETION OF CONSTRUCTION -
2027

DELIVERY CONDITION -
GREEN FRAME





housebook

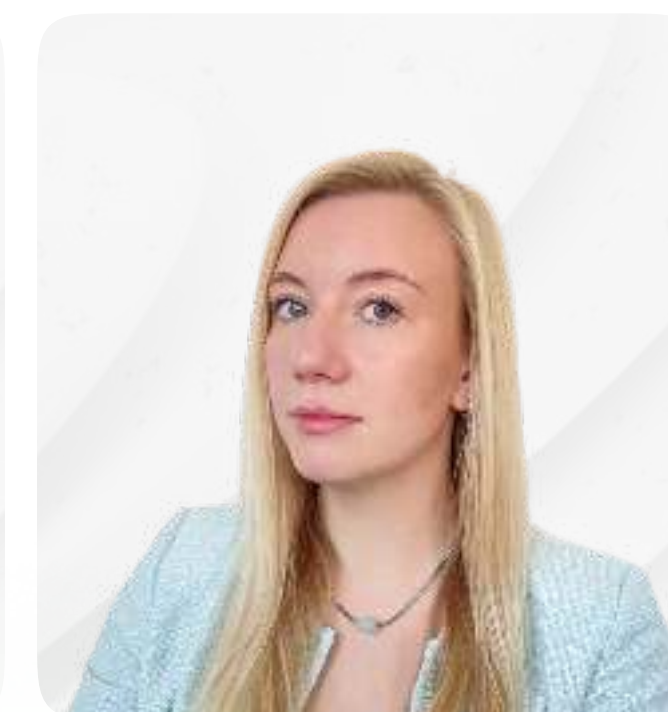
international real estate
IT-platform for agents

WhatsApp for communication 

Partnership managers



Alevtina
Kapustina



Svetlana
Guseva

housebook.deals

partner@housebook.deals