



BARE 
BY BIOGRAPI

**BARE
CONNECTS US**



ABOUT BARE

Bare is a charming and elegant residential project nestled in the heart of Old Tbilisi - one of the city's most authentic and vibrant areas. Surrounded by history and culture, it offers a refined living experience where timeless charm meets modern com-

- **-1 FLOOR - PARKING AREA**
- **1 FLOOR - COMMERCIAL AREA**
- **2-5 FLOORS - RESIDENTIAL SPACES**
- **44 APARTMENTS**
- **PROJECT HEIGHT - 19 M**
- **PARKING FOR 20 CARS**
- **PREMIUM QUALITY, HIGH-CAPACITY ELEVATOR**



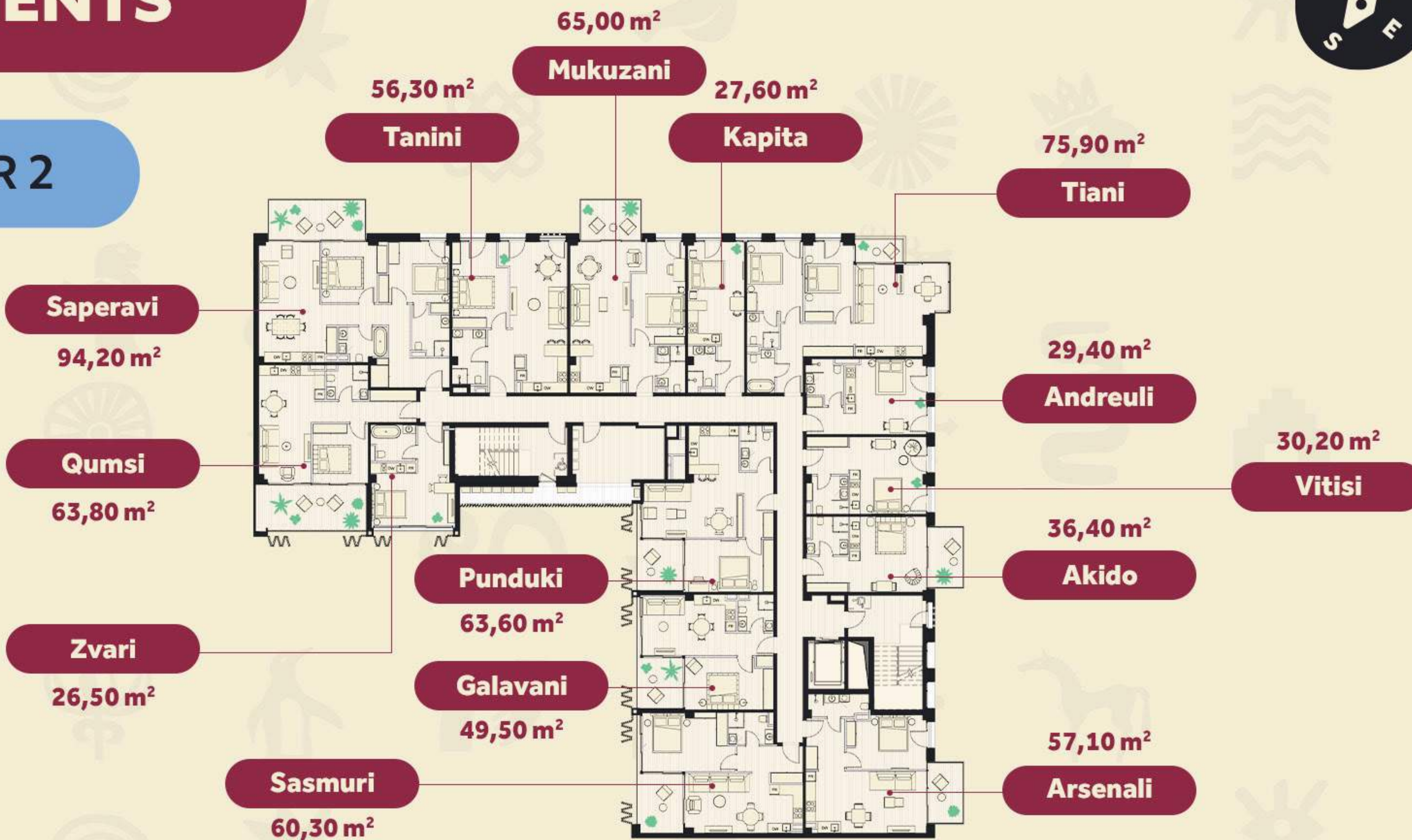
MASTER PLAN



APARTMENTS

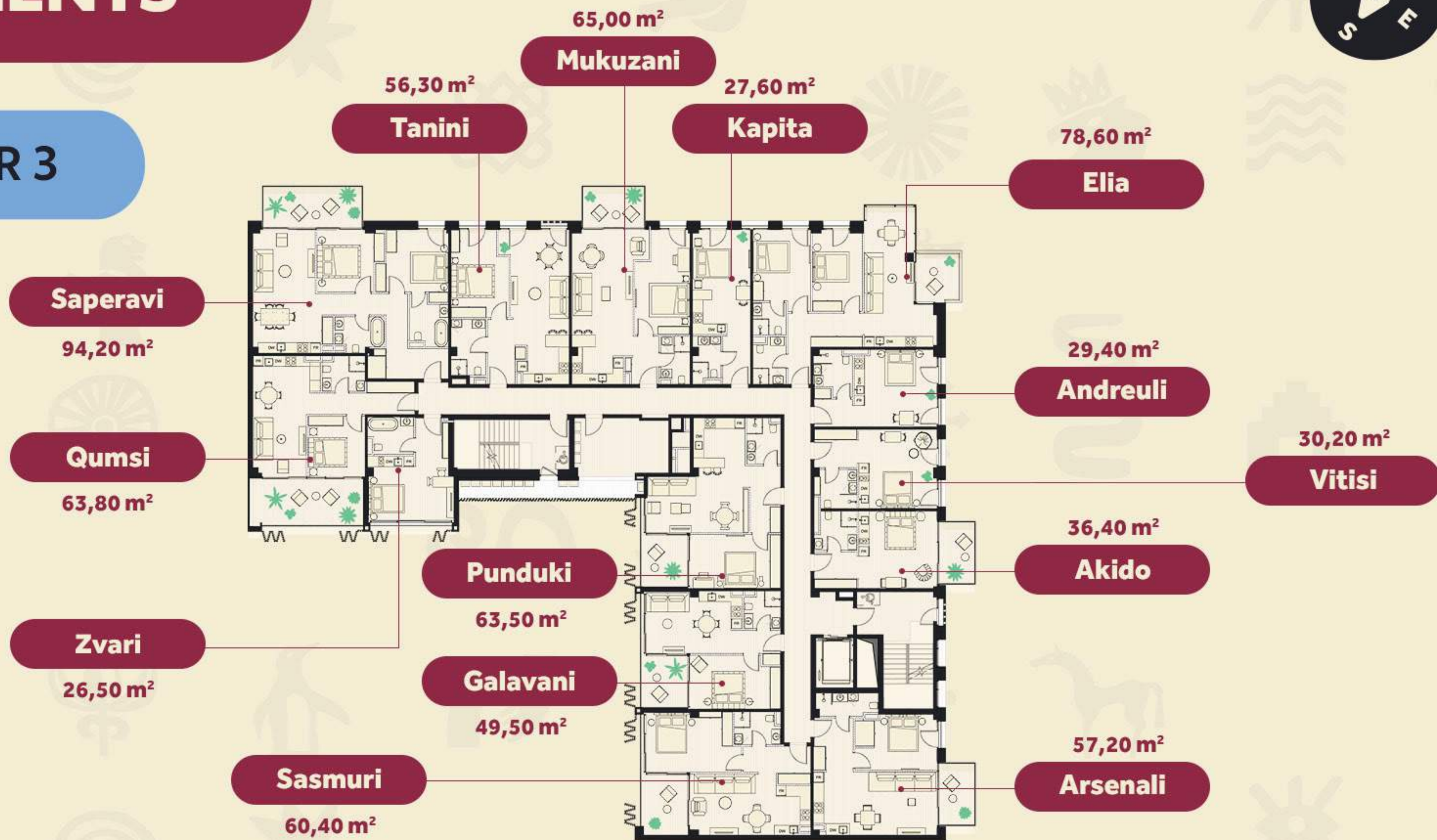


FLOOR 2



APARTMENTS

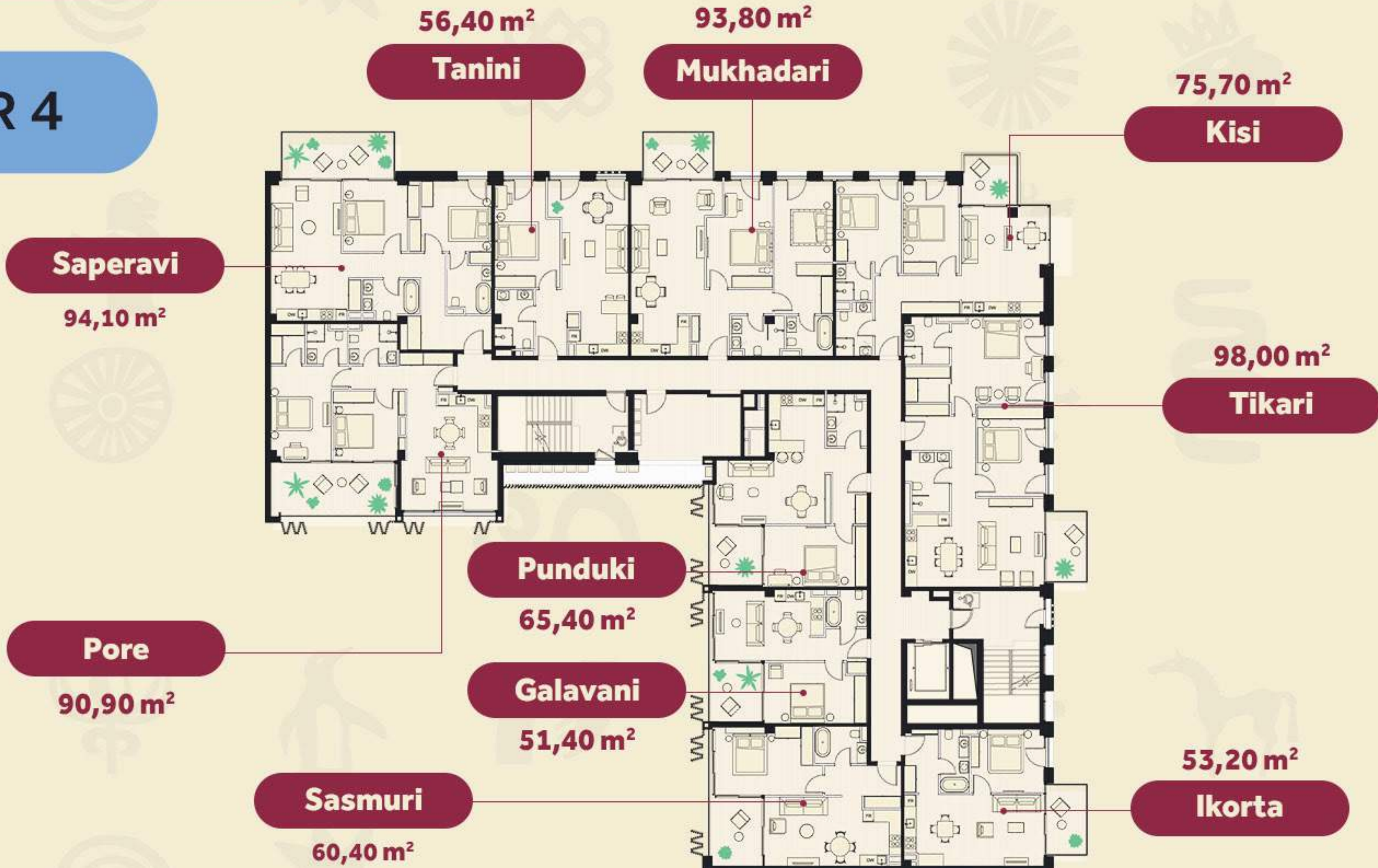
FLOOR 3



APARTMENTS



FLOOR 4



APARTMENTS



FLOOR 5

46,60 m²

Buera

78,60 m²

Sachino

Metekhi

153,90 m²

113,90 m²

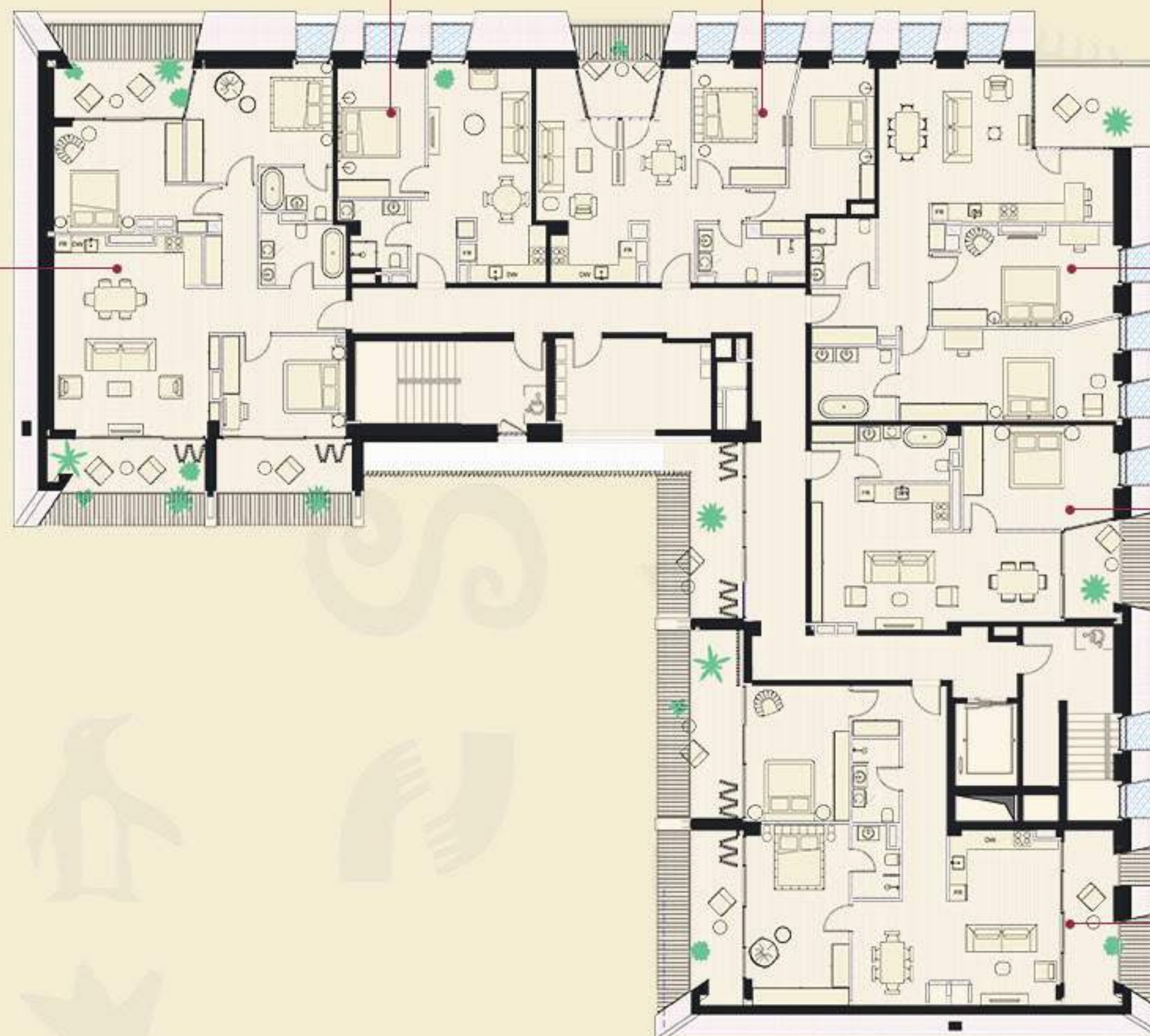
Okroula

71,50 m²

Manavi

142,50 m²

Aznaura



APARTAMENT TYPE

Zvari

STUDIO

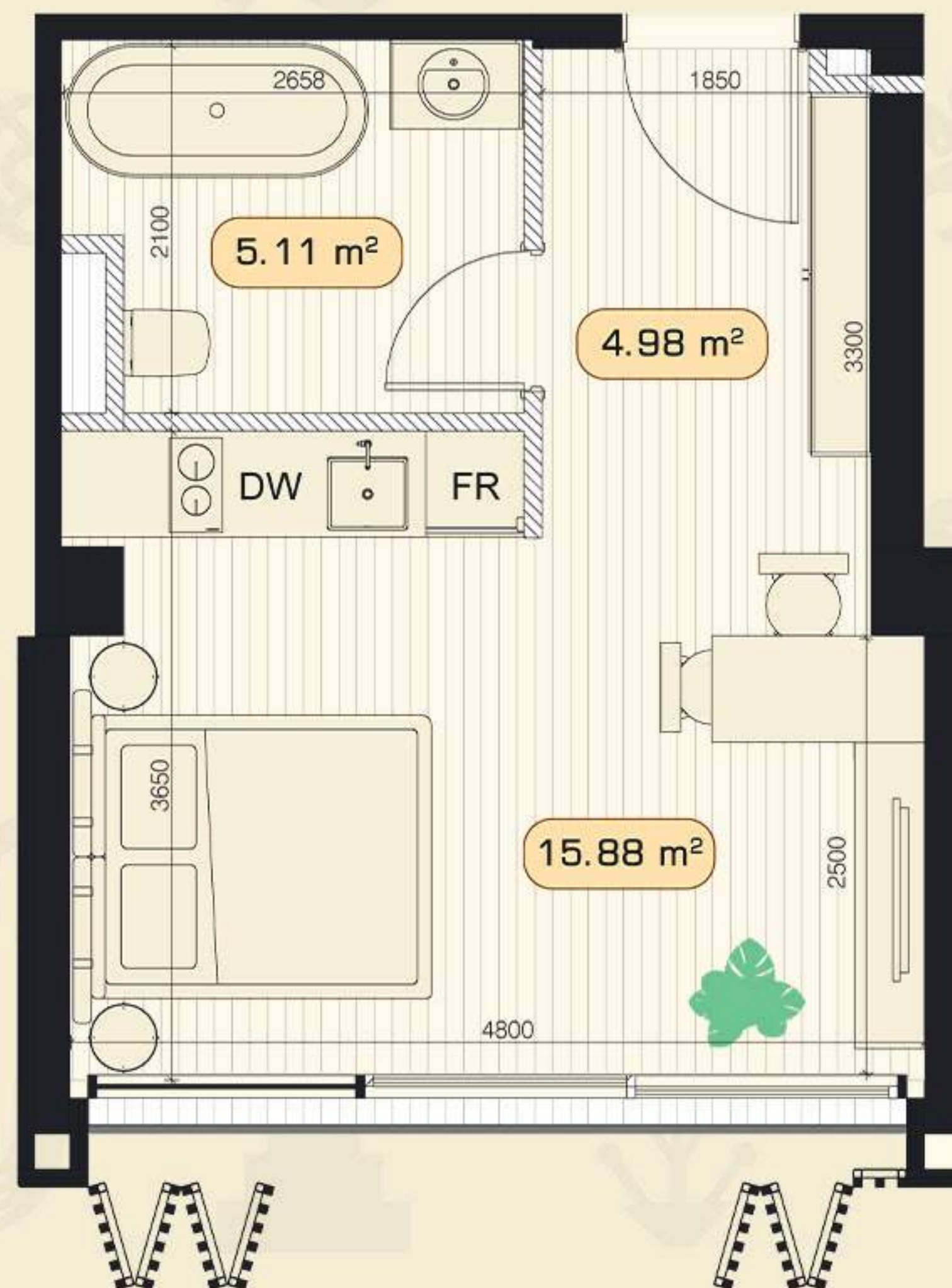
Total Area : **26.50 sq.m**

Hall: **4.98 sq.m**

Common Space: **15.88 sq.m**

WC: **5.11 sq.m**

View: **South-East**



APARTAMENT TYPE

Kapita

STUDIO

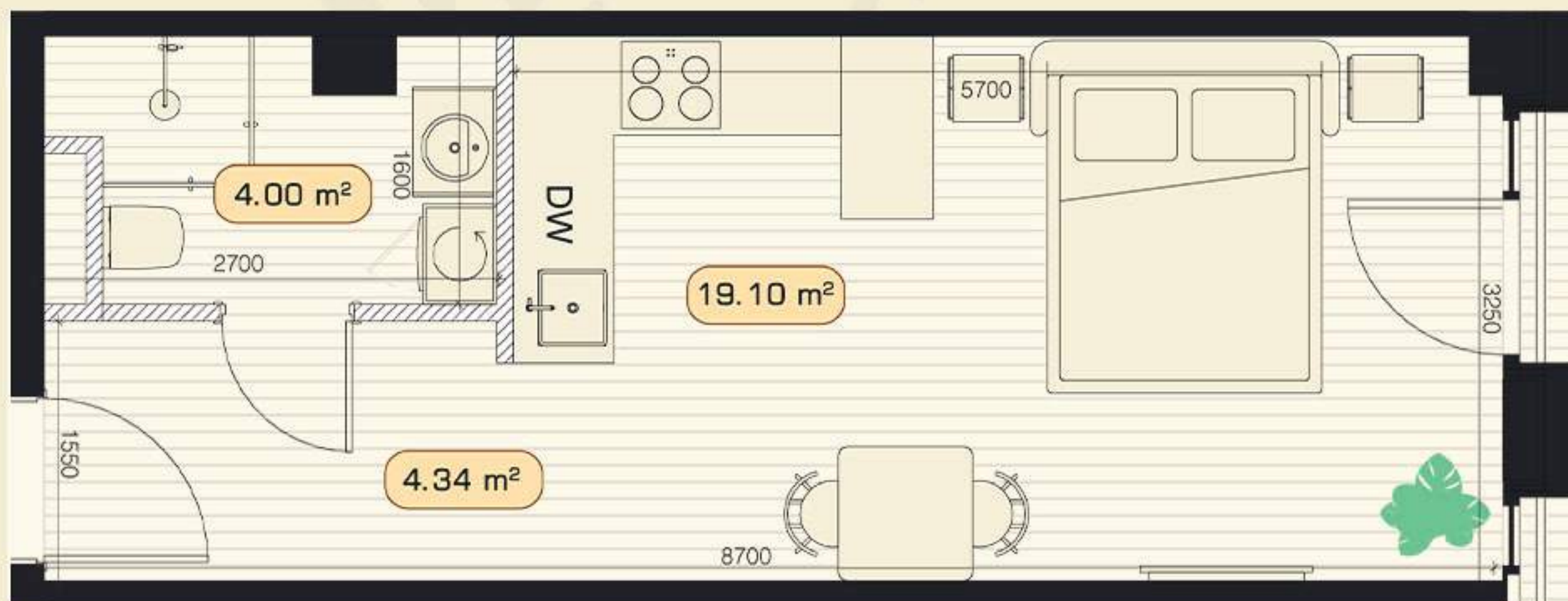
Total Area : **27.60 sq.m**

Hall: **4.34 sq.m**

Common Space: **19.10 sq.m**

WC: **4.00 sq.m**

View: **North**



APARTAMENT TYPE

Andreuli

STUDIO

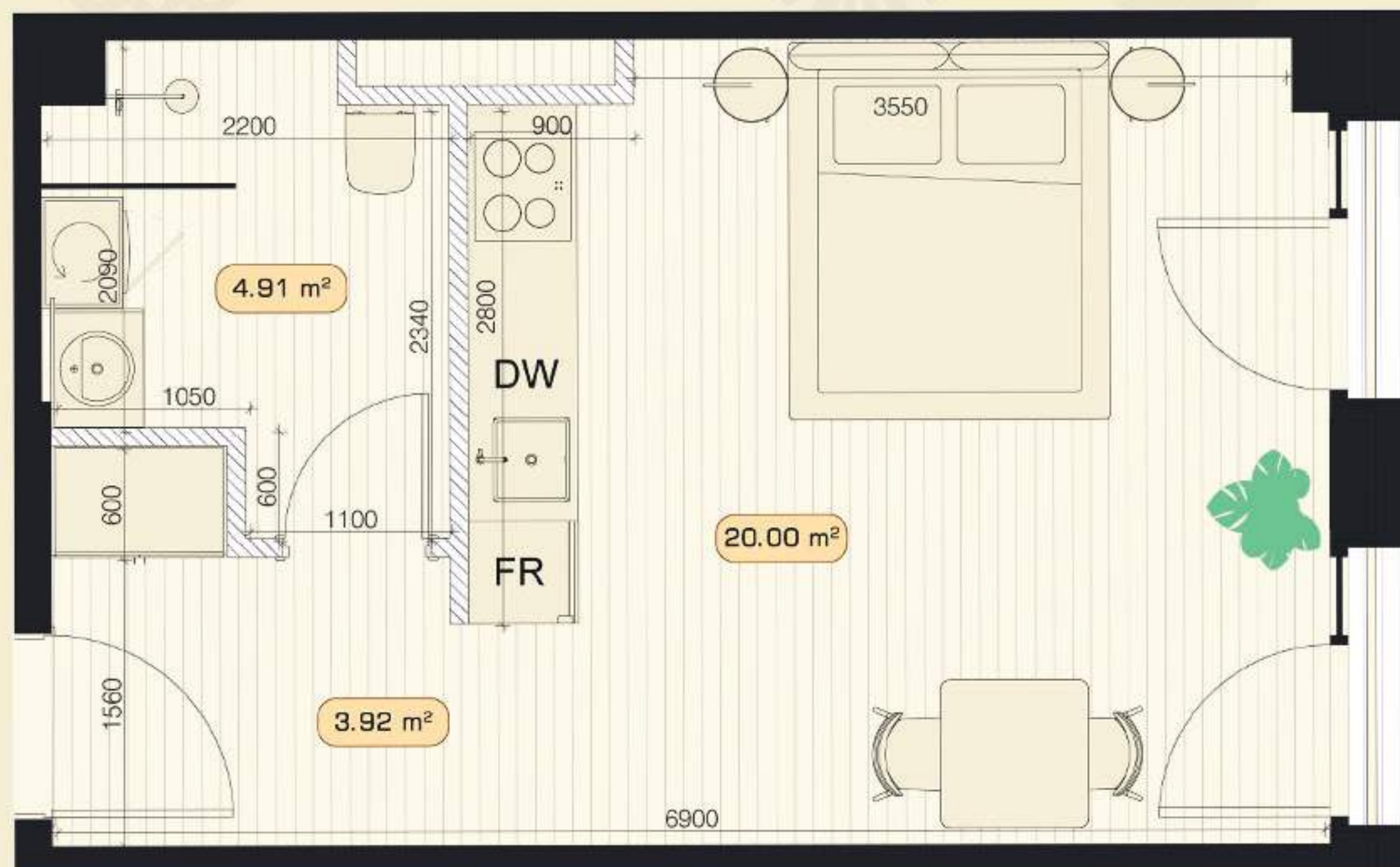
Total Area : **29.40 sq.m**

Hall: **3.92 sq.m**

Common Space: **20.00 sq.m**

WC: **4.91 sq.m**

View: **North**



APARTAMENT TYPE

Vitisi

STUDIO

Total Area : **30.20 sq.m**

Hall: **5.16 sq.m**

Common Space: **19.59 sq.m**

WC: **4.89 sq.m**

View: **North-East**



APARTAMENT TYPE

Akido

STUDIO

Total Area : **36.40 sq.m**

Hall: **4.92 sq.m**

Common Space: **19.24 sq.m**

WC: **4.81 sq.m**

Terrace: **6.90 sq.m**

View: **North-East**



APARTAMENT TYPE

Buera

1 BEDROOM

Total Area : **46.60 sq.m**

Hall: **4.41 sq.m**

Living Room / Kitchen: **23.39 sq.m**

Bedroom: **13.40 sq.m**

WC: **4.75 sq.m**

View: **North-West**



APARTAMENT TYPE

Galavani

1 BEDROOM

Total Area : **51.40 sq.m**

Hall: **4.29 sq.m**

Living Room / Kitchen: **18.60 sq.m**

Bedroom: **14.61 sq.m**

WC: **4.00 sq.m**

Terrace: **9.50 sq.m**

View: **South**



APARTAMENT TYPE

Ikorta

1 BEDROOM

Total Area : **53.20 sq.m**

Hall: **5.30 sq.m**

Living Room / Kitchen: **24.13 sq.m**

Bedroom: **11.19 sq.m**

WC: **4.35 sq.m**

Terrace: **6.90 sq.m**

View: **East**



APARTAMENT TYPE

Tanini

1 BEDROOM

Total Area : **56.40 sq.m**

Hall: **5.71 sq.m**

Living Room / Kitchen: **28.13 sq.m**

Bedroom: **14.69 sq.m**

WC: **5.96 sq.m**

View: **North-West**



APARTAMENT TYPE

Arsenali

1 BEDROOM

Total Area : **57.20 sq.m**

Hall: **6.69 sq.m**

Living Room / Kitchen: **24.20 sq.m**

Bedroom: **13.92 sq.m**

WC: **4.29 sq.m**

Terrace: **7.00 sq.m**

View: **West**



APARTAMENT TYPE

Sasmuri

1 BEDROOM

Total Area : **60.40 sq.m**

Hall: **6.91 sq.m**

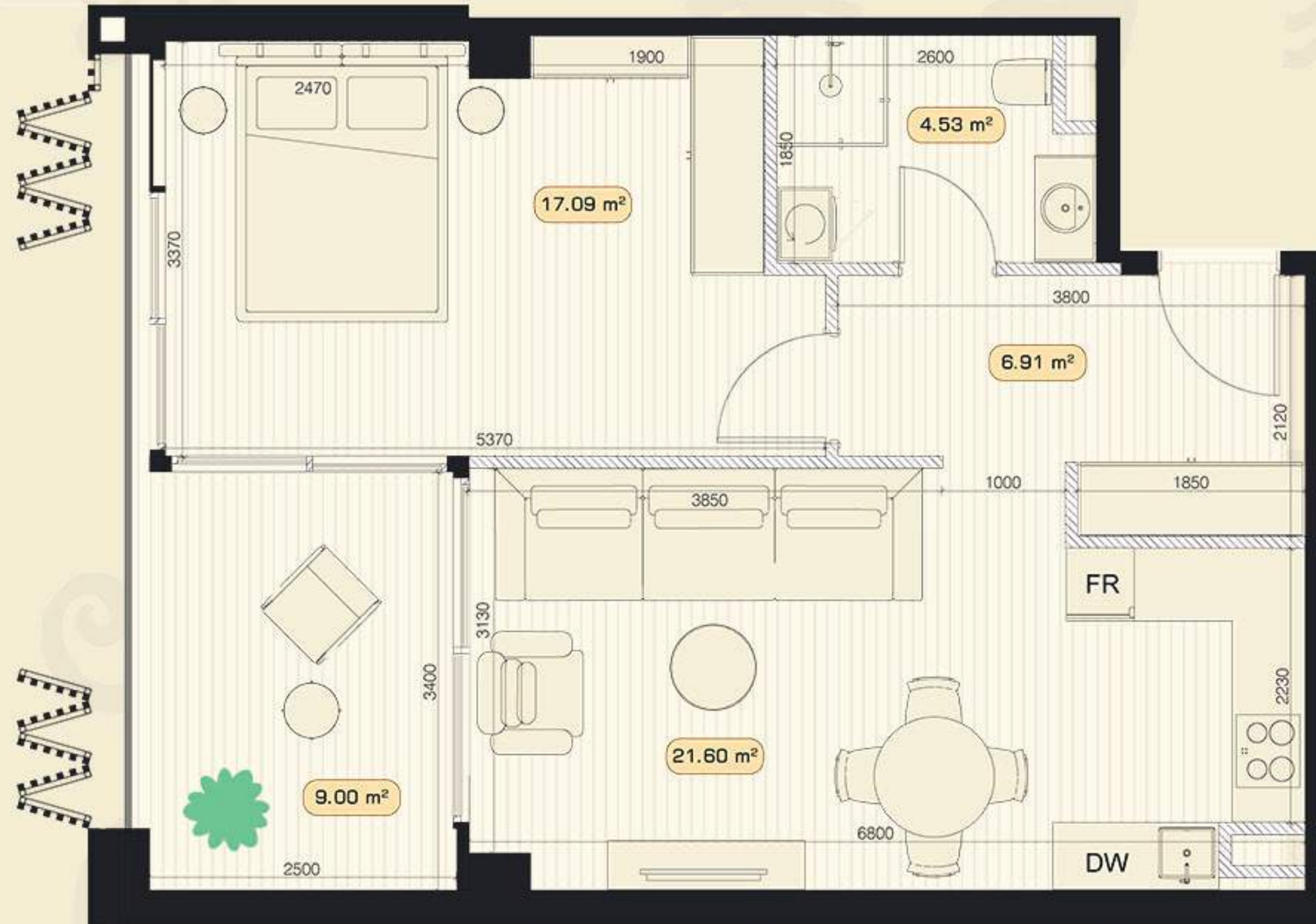
Living Room / Kitchen: **21.60 sq.m**

Bedroom: **17.09 sq.m**

WC: **4.53 sq.m**

Terrace: **9.00 sq.m**

View: **South**



APARTAMENT TYPE

Qumsi

1 BEDROOM

Total Area : **63.80 sq.m**

Hall: **8.83 sq.m**

Living Room / Kitchen: **21.73 sq.m**

Bedroom: **11.00 sq.m**

WC: **4.57 sq.m**

Terrace: **16.60 sq.m**

View: **South-East**



APARTAMENT TYPE

Mukuzani

1 BEDROOM

Total Area : **65.00 sq.m**

Hall: **4.36 sq.m**

Living Room / Kitchen: **30.59 sq.m**

Bedroom: **16.65 sq.m**

WC: **4.20 sq.m**

Terrace: **8.00 sq.m**

View: **North**



APARTAMENT TYPE

Punduki

1 BEDROOM

Total Area : **65.40 sq.m**

Hall: **6.97 sq.m**

Living Room: **18.08 sq.m**

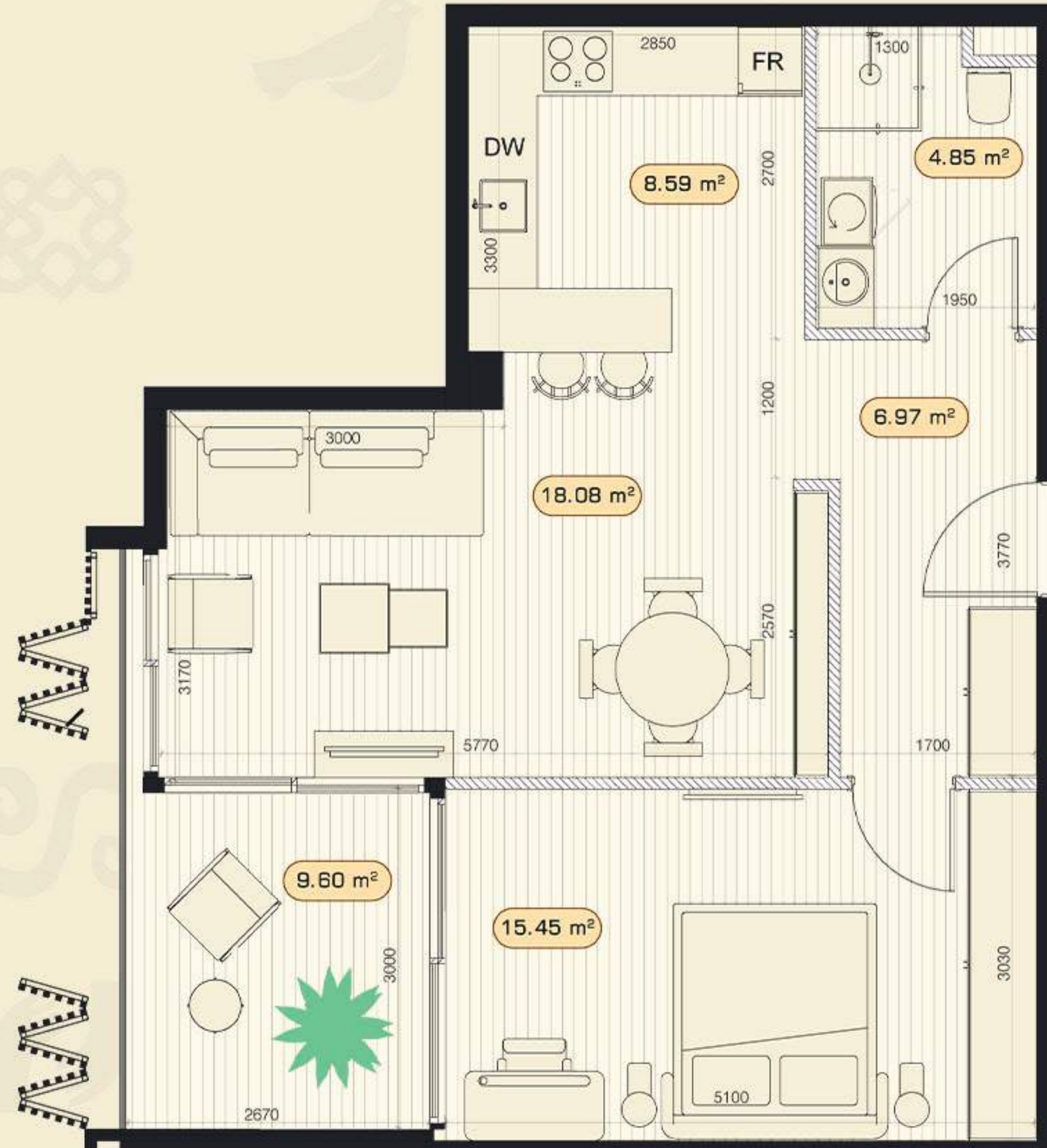
Kitchen: **8.59 sq.m**

Bedroom: **15.45 sq.m**

WC: **4.85 sq.m**

Terrace: **7.80 sq.m**

View: **South**



APARTAMENT TYPE

Manavi

1 BEDROOM

Total Area : **71.50 sq.m**

Hall: **3.89 sq.m**

Living Room / Kitchen: **33.19 sq.m**

Bedroom: **18.06 sq.m**

WC: **6.16 sq.m**

Terrace: **9.40 sq.m**

View: **North-East**



APARTAMENT TYPE

Qisi

2 BEDROOM

Total Area : **75.70 sq.m**

Hall: **10.81 sq.m**

Living Room / Kitchen: **21.89 sq.m**

Bedroom#1: **13.77 sq.m**

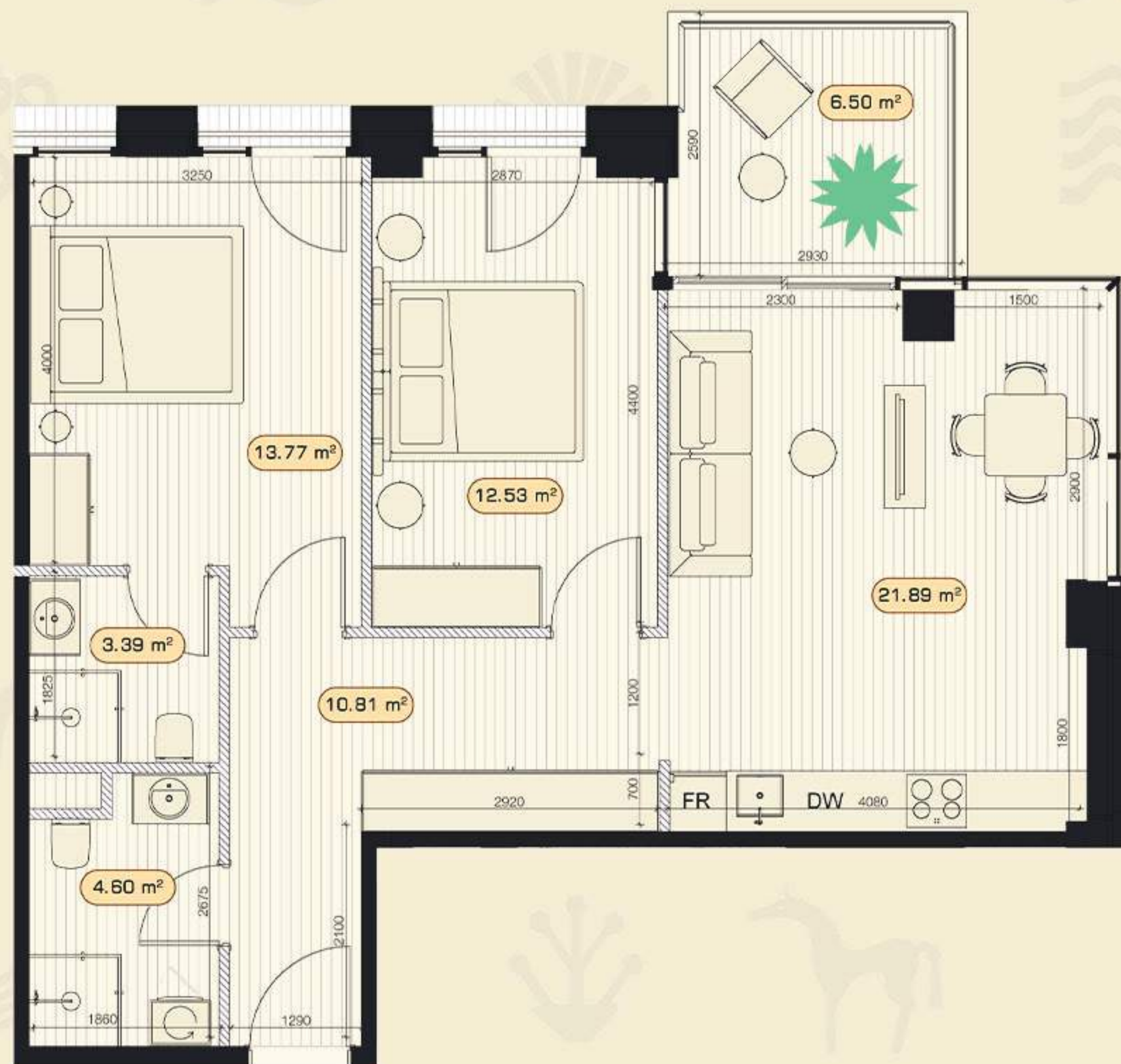
Bedroom#2: **12.53 sq.m**

WC#1: **4.60 sq.m**

WC#2: **3.39 sq.m**

Terrace: **6.50 sq.m**

View: **North**



APARTAMENT TYPE

Elia

2 BEDROOM

Total Area : **78.60 sq.m**

Hall: **10.77 sq.m**

Living Room / Kitchen: **24.70 sq.m**

Bedroom#1: **13.77 sq.m**

Bedroom#2: **12.65 sq.m**

WC#1: **3.95 sq.m**

WC#2: **3.40 sq.m**

Terrace: **6.50 sq.m**

View: **North**



APARTAMENT TYPE

Sachino

2 BEDROOM

Total Area : **78.60 sq.m**

Hall: **7.16 sq.m**

Living Room / Kitchen: **26.90 sq.m**

Bedroom#1: **16.20 sq.m**

Bedroom#2: **13.36 sq.m**

WC: **5.65 sq.m**

Terrace: **8.00 sq.m**

View: **North**



APARTAMENT TYPE

Pore

2 BEDROOM

Total Area : **90.90 sq.m**

Hall: **7.71 sq.m**

Living Room / Kitchen: **26.31 sq.m**

Bedroom#1: **14.54 sq.m**

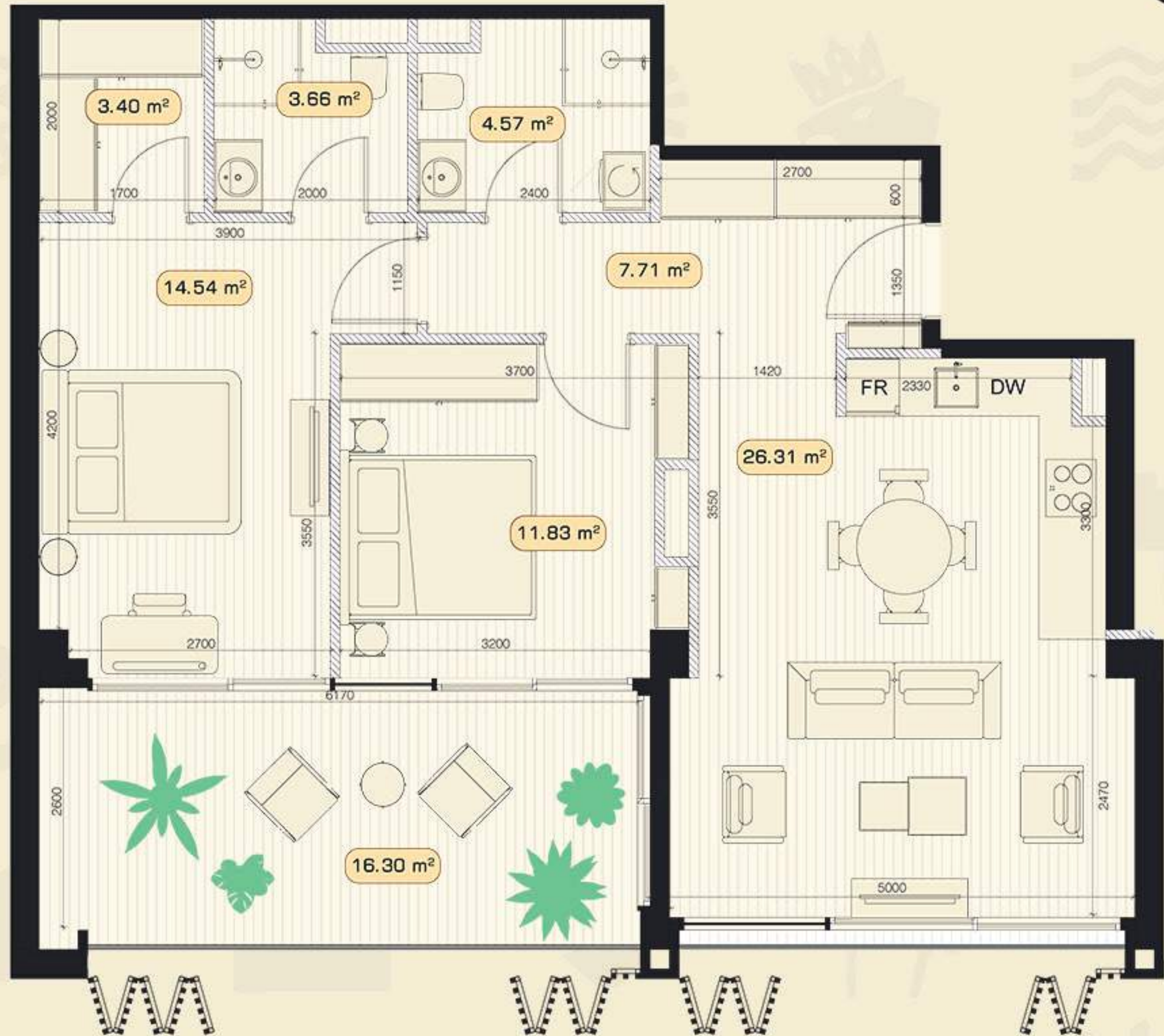
Bedroom#2: **11.83 sq.m**

WC#1: **4.57 sq.m**

WC#2: **3.66 sq.m**

Terrace: **16.30 sq.m**

View: **South-East**



APARTAMENT TYPE

Mukhadari

2 BEDROOM

Total Area : **93.80 sq.m**

Hall: **7.76 sq.m**

Living Room / Kitchen: **31.45 sq.m**

Bedroom#1: **19.15 sq.m**

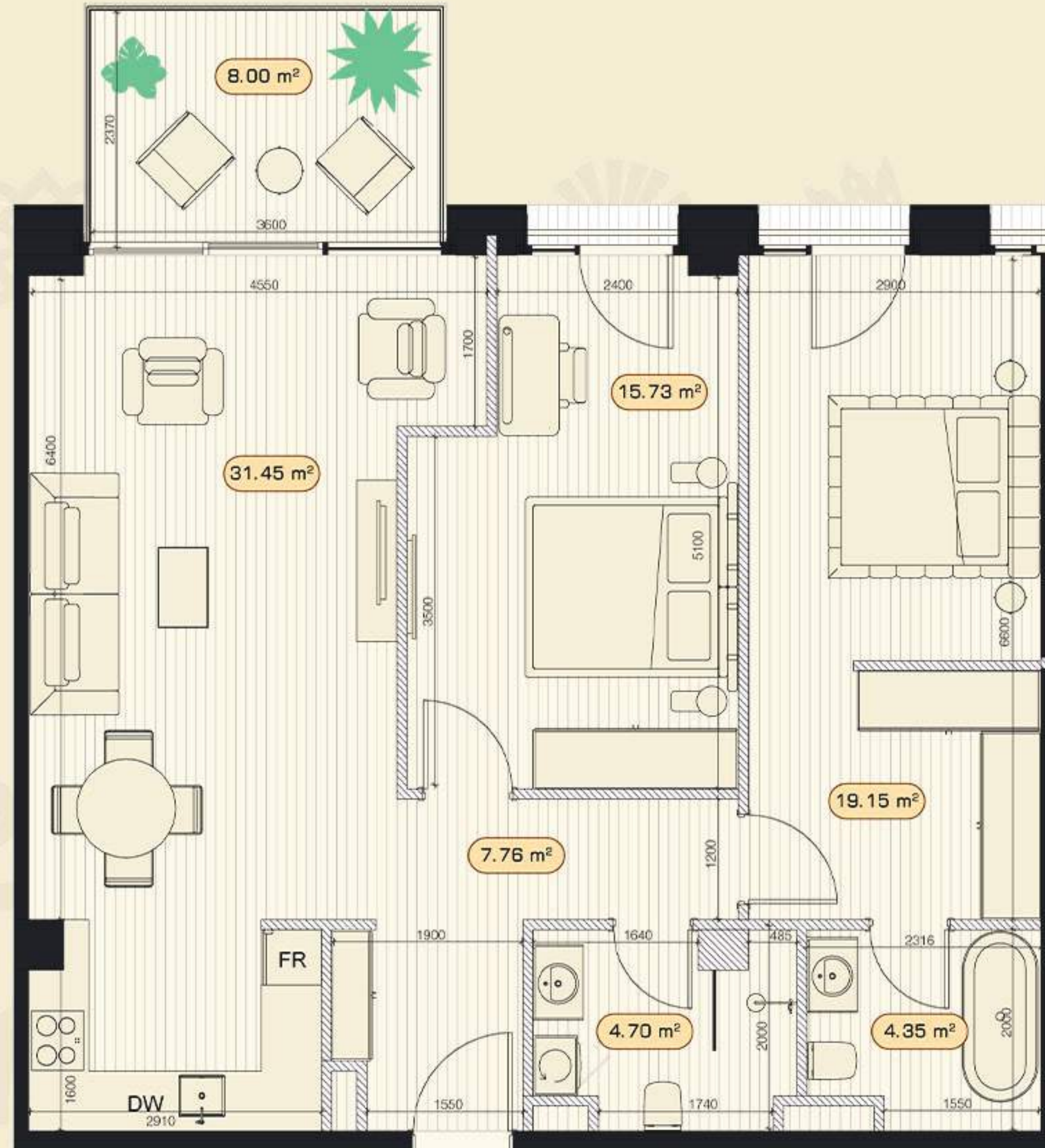
Bedroom#2: **15.73 sq.m**

WC#1: **4.70 sq.m**

WC#2: **4.35 sq.m**

Terrace: **8.00 sq.m**

View: **North**



APARTAMENT TYPE

Saperavi

2 BEDROOM

Total Area : **94.20 sq.m**

Hall: **15.65 sq.m**

Living Room / Kitchen: **26.65 sq.m**

Bedroom#1: **13.85 sq.m**

Bedroom#2: **12.15 sq.m**

WC#1: **5.56 sq.m**

WC#2: **5.03 sq.m**

Terrace: **12.90 sq.m**

View: **North**



APARTAMENT TYPE

Tikari

2 BEDROOM

Total Area : **98.00 sq.m**

Hall: **10.15 sq.m**

Living Room / Kitchen: **28.19 sq.m**

Bedroom#1: **20.24 sq.m**

Bedroom#2: **14.73 sq.m**

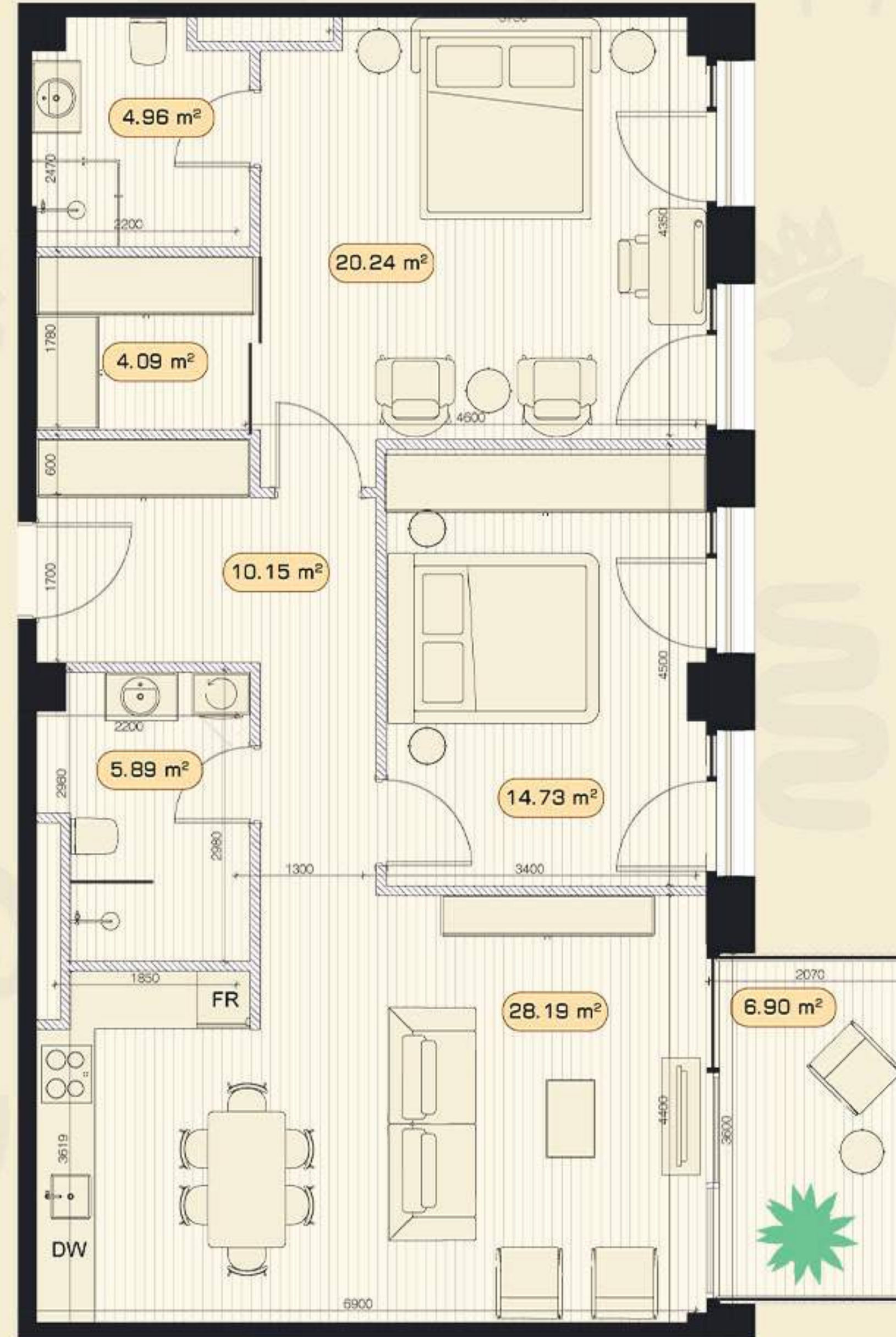
Wardrobe Room: **4.09 sq.m**

WC#1: **5.89 sq.m**

WC#2: **4.96 sq.m**

Terrace: **6.90 sq.m**

View: **North**



აკარტაგენის ტიპი

აზნაურა

ორსაძინებლიანი

საერთო ფართი : **142.50 მ²**

ჰოლი: **13.80 მ²**

საერთო ოთახი/სამზარეულო: **30.98 მ²**

საძინებელი #1: **20.36 მ²**

საძინებელი#2: **16.09 მ²**

სველი წერტილი#1: **4.56 მ²**

სველი წერტილი#2: **3.65 მ²**

ტერასა#1: **17.20 მ²**

ტერასა#2: **16.30 მ²**

ტერასა#3: **15.90 მ²**

მხარე: **სამხრეთი/აღმოსავლეთი**



APARTAMENT TYPE

Metekhi

3 BEDROOM

Total Area : **153.90 sq.m**

Hall: **12.30 sq.m**

Living Room / Kitchen: **35.13 sq.m**

Bedroom#1: **17.75 sq.m**

Bedroom#2: **17.36 sq.m**

Bedroom#2: **14.08 sq.m**

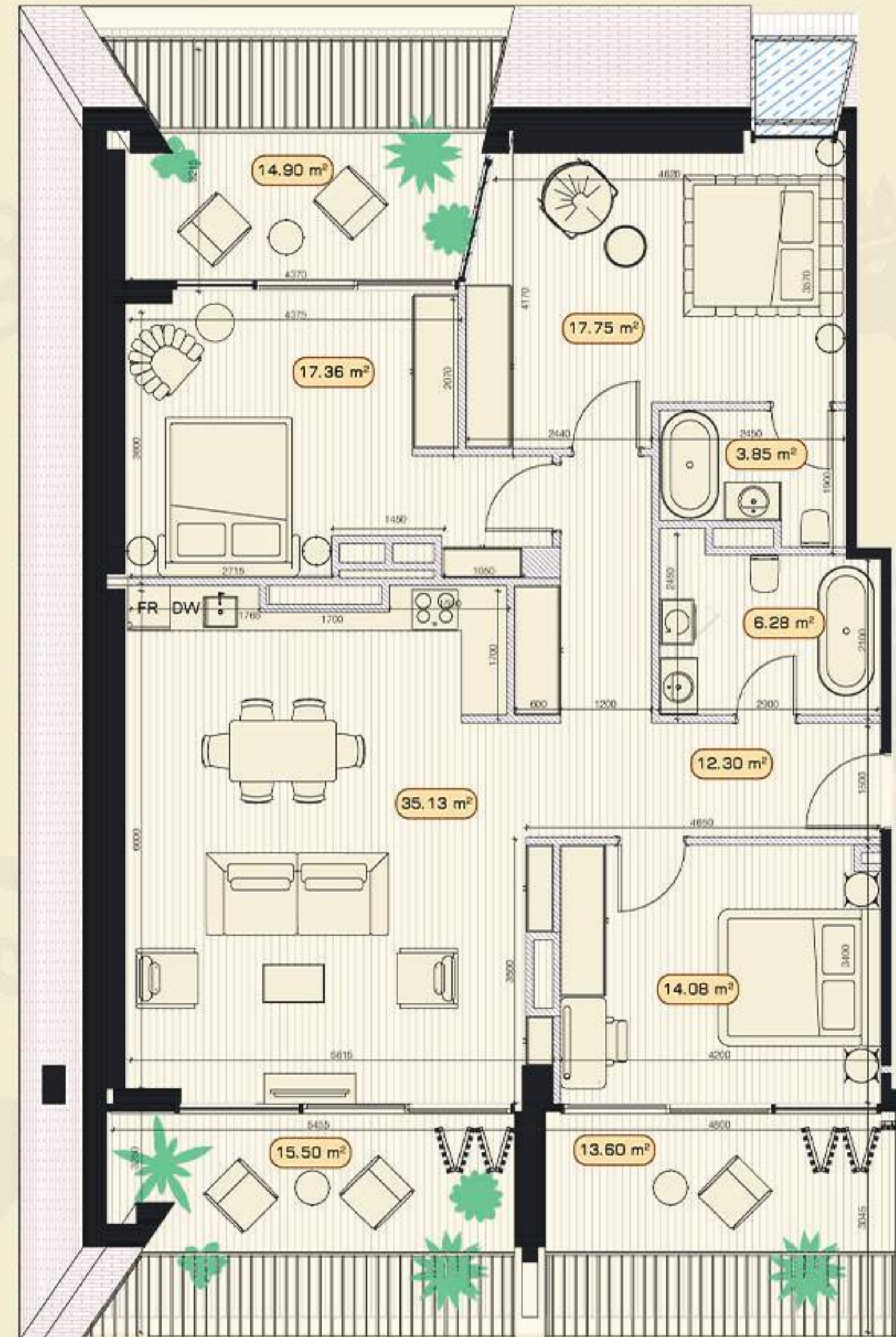
WC#1: **6.28 sq.m**

WC#2: **3.85 sq.m**

Terrace#1: **15.50 sq.m**

Terrace#2: **14.90 sq.m**


Terrace#3: **13.60 sq.m**



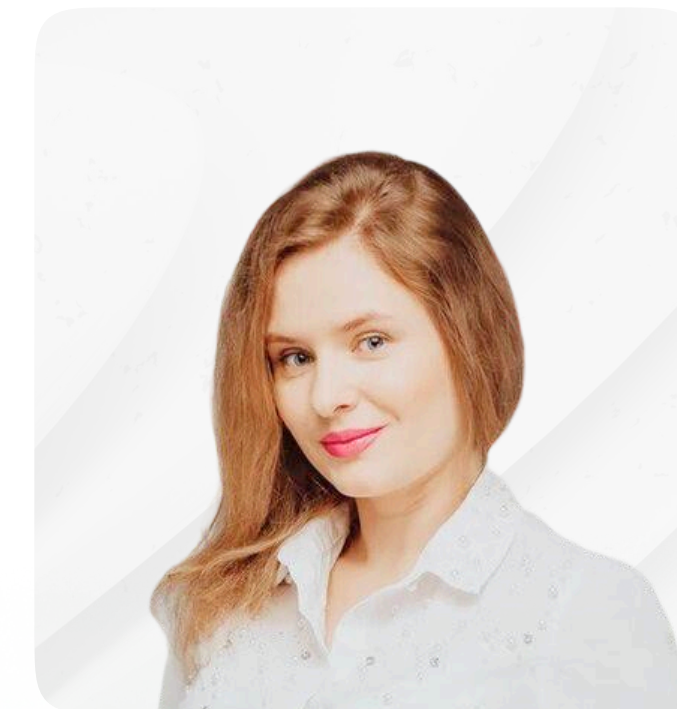


housebook

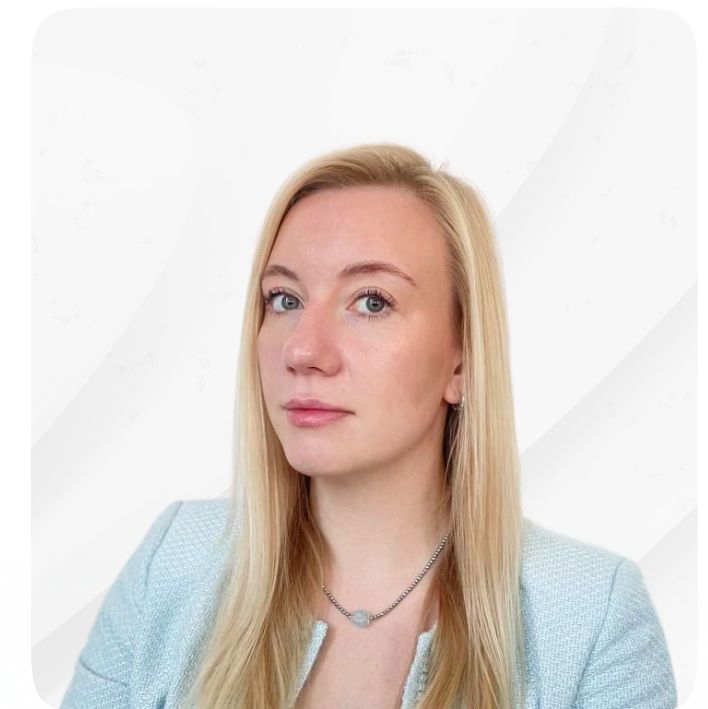
international real estate
IT-platform for agents

WhatsApp for communication 

Partnership managers



Alevtina
Kapustina



Svetlana
Guseva

housebook.deals

partner@housebook.deals