



Olivia Gardens

R E S I D E N C E

by **SEGREX**



Olivia Gardens

RESIDENCE

PREMIUM
RESIDENTIAL
COMPLEX

JUMEIRAH
GARDENS
CITY



WELCOME TO OLIVIA GARDENS RESIDENCE

AN EXCLUSIVE
PREMIUM-CLASS RESIDENTIAL
COMPLEX IN THE PRESTIGIOUS
JUMEIRAH GARDENS CITY
DISTRICT.

A UNIQUE COMBINATION
OF MODERN DESIGN,
HIGH-END AMENITIES,
AND A PRIME LOCATION
MAKES THIS PROJECT
THE PERFECT CHOICE
FOR BOTH LIVING
AND INVESTMENT.

1

BASEMENT

2

PARKING FLOORS

8

LIVING FLOORS

1q 2027

HANDOVER

78

MODERN LUXURY
APARTMENTS

ROOF FLOOR

LIVING FLOOR

FIRST FLOOR

PARKING FLOORS

GROUND FLOOR



LOCATION

OLIVIA GARDENS RESIDENCE IS SITUATED IN JUMEIRAH GARDENS CITY, NEAR DUBAI'S BUSINESS CENTER, SHOPPING, AND CULTURAL LANDMARKS. IT OFFERS EXCELLENT TRANSPORT ACCESSIBILITY—JUST A FEW MINUTES TO EMIRATES TOWERS METRO AND WORLD TRADE CENTER METRO STATIONS, AS WELL AS QUICK ACCESS TO THE CITY'S MAIN HIGHWAY, SHEIKH ZAYED ROAD.





GYM &
FITNESS



SAUNA



YOGA &
PILATES



ROOF POOL &
SWIMMING POOL



CINEMA



BBQ
ZONE



KIDS
AQUA ZONE



JACUZZI



RECREATION
AREA



KIDS PLAY
AREA



OLIVE GARDEN &
CHILLOUT YARD



MEETING
ZONE



COWORKING
IN LOBBY



PARKING



EV CHARGES

ROOF FLOOR

FIRST FLOOR

PARKING FLOORS

GROUND FLOOR



ROOFTOP



FIRST FLOOR



OLIVE GARDEN &
CHILLOUT YARD



KIDS PLAY
AREA

JACUZZI



SWIMMING POOL



RECREATION
AREA

GROUND FLOOR





23

STUDIOS

A modern kitchen and dining area. The kitchen features dark wood cabinetry, a black marble backsplash with gold veining, and a built-in oven. A dining table with four upholstered chairs is in the foreground. A large potted plant is on the left. A large number '16' is overlaid on the image.

16

STUDIOS
WITH A SEPARATE
BEDROOM



30

ONE-BEDROOM
APARTMENTS

A modern, minimalist living and dining area. The room features large floor-to-ceiling windows with sheer curtains, offering a view of a cityscape. In the center, a round black dining table is surrounded by four upholstered chairs with a light-colored, textured fabric. To the right, a large, low-profile sofa with a textured, earthy-toned fabric is adorned with a light-colored throw blanket and a cushion. A round coffee table with a black top and gold legs sits in front of the sofa. To the left, a tall, dark wooden shelving unit holds various decorative items, including a white bowl and a small plant. A large, light-colored rug is placed under the sofa and coffee table. The floor is made of large, light-colored tiles. The overall aesthetic is clean, modern, and sophisticated.

9

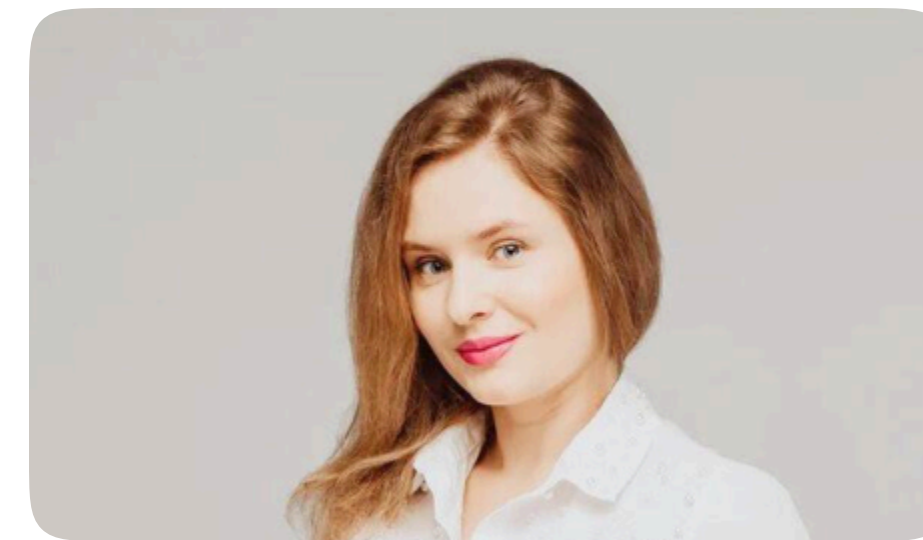
TWO-BEDROOM
APARTMENTS



housebook Real Estate Company
since 2012 in the UAE

+971 (4) 412-5007

Managers of partnerships



Alevtina Kapustina



Svetlana Guseva

Office

Housebook Real Estate LCC

Dubai Marina, office 2502-01, Dubai, UAE

Company license: 1128098

ae.housebook.deals

partner@housebook.ae

