

# *floareá* *Oasis*

## Floor Plans



MASHRIQ ELITE  
— DEVELOPMENTS —

# About *Floarea Oasis*

---

Introducing Floarea Oasis, a remarkable new project that redefines modern living in a beautifully designed community. Strategically located in Dubailand, it places you just moments away from essential amenities, including parks, shopping malls, and schools within the community.

Each spacious apartment is thoughtfully designed to maximize natural light and modern comforts, creating an inviting sanctuary where you can truly feel at home. Experience a life of luxury, convenience, and joy at Floarea Oasis!

Rising majestically across 13 floors, this distinguished development features **257 beautifully appointed residences**, including **studio, 1-bedroom, and 2-bedroom apartments**, making this project an ideal retreat for modern living.

# Roof Top Amenities



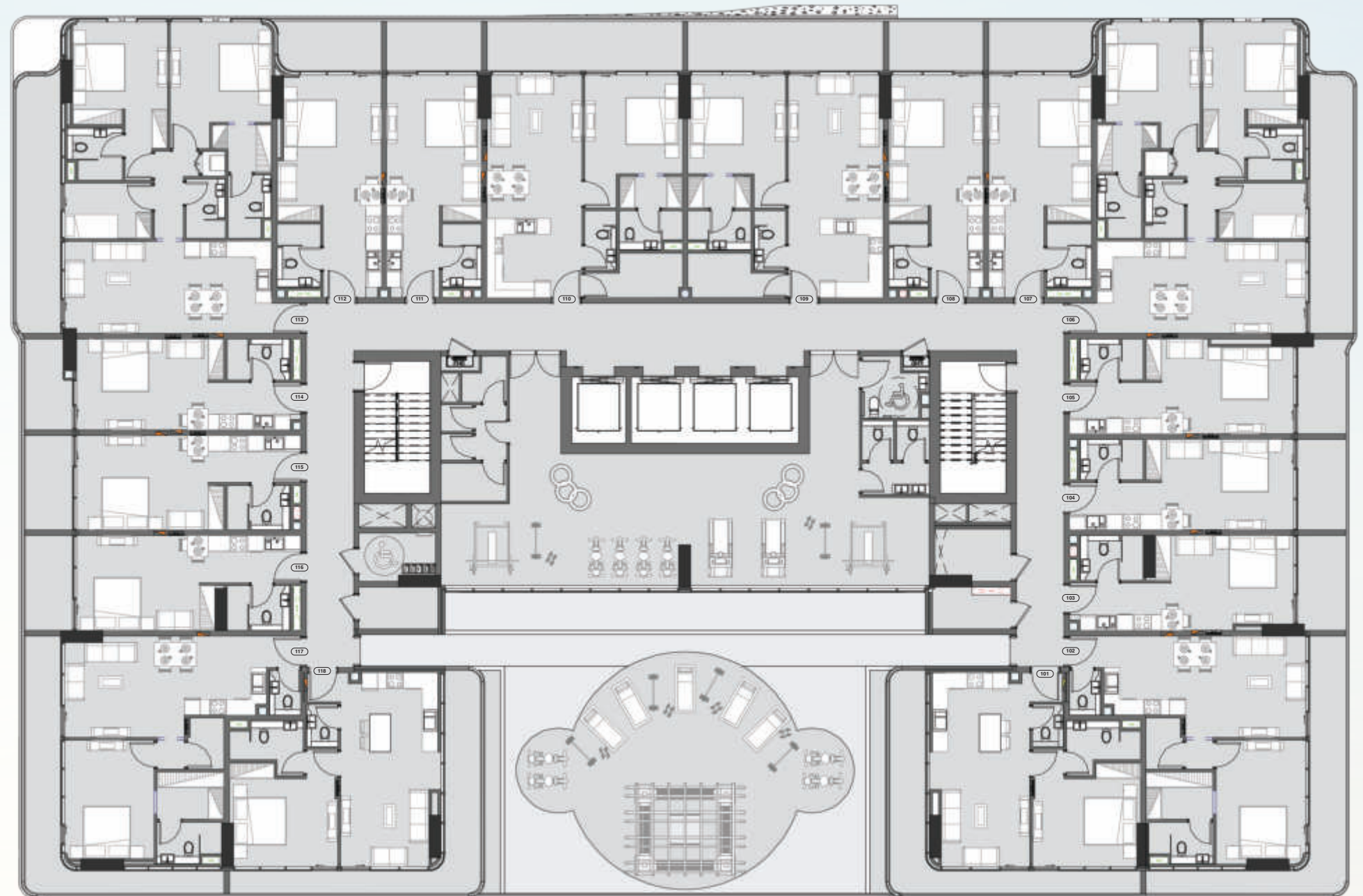
**Disclaimer:**

All pictures, plans, layouts, information, data, dimensions and details included in this floor plan are indicative only and may change at any time up to the final 'as built' status in accordance with final designs of the project, regulatory approvals and planning permissions.



# Floor Plan

## 1st Floor



**Disclaimer:**

All pictures, plans, layouts, information, data, dimensions and details included in this floor plan are indicative only and may change at any time up to the final 'as built' status in accordance with final designs of the project, regulatory approvals and planning permissions.



# Typical Floor Plan



**Disclaimer:**

All pictures, plans, layouts, information, data, dimensions and details included in this floor plan are indicative only and may change at any time up to the final 'as built' status in accordance with final designs of the project, regulatory approvals and planning permissions.

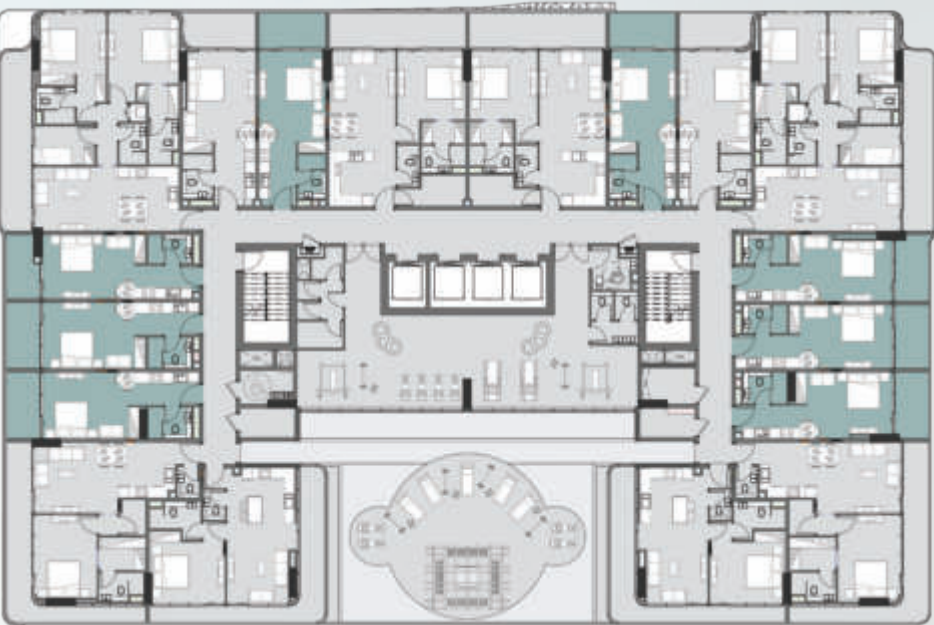


# Unit Layout

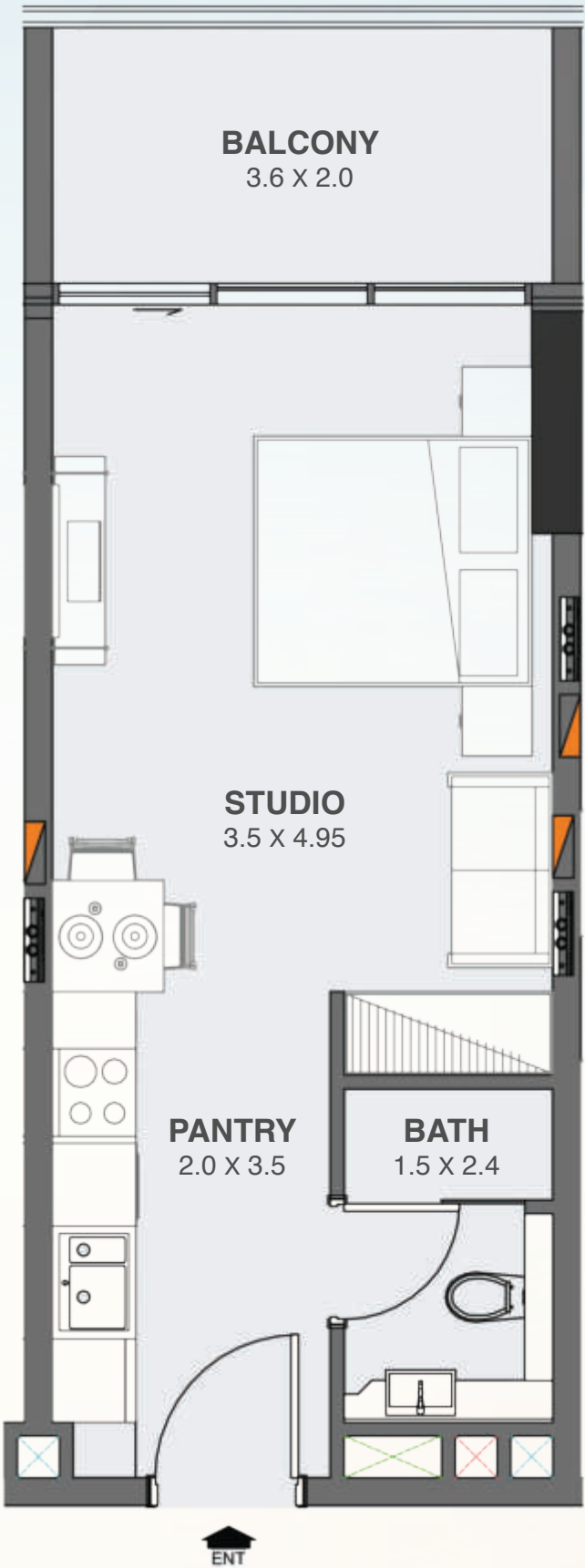
Embark on a journey of refined living with our meticulously crafted floor plans, designed to harmonize elegance with functionality.



## Studio Apartment - Standard



SUITE AREA	344.66 SQ.FT
TERRACE AREA	80.62 SQ.FT
TOTAL AREA	425.28 SQ.FT



**Disclaimer:**  
All pictures, plans, layouts, information, data, dimensions and details included in this floor plan are indicative only and may change at any time up to the final 'as built' status in accordance with final designs of the project, regulatory approvals and planning permissions.



# Unit Layout

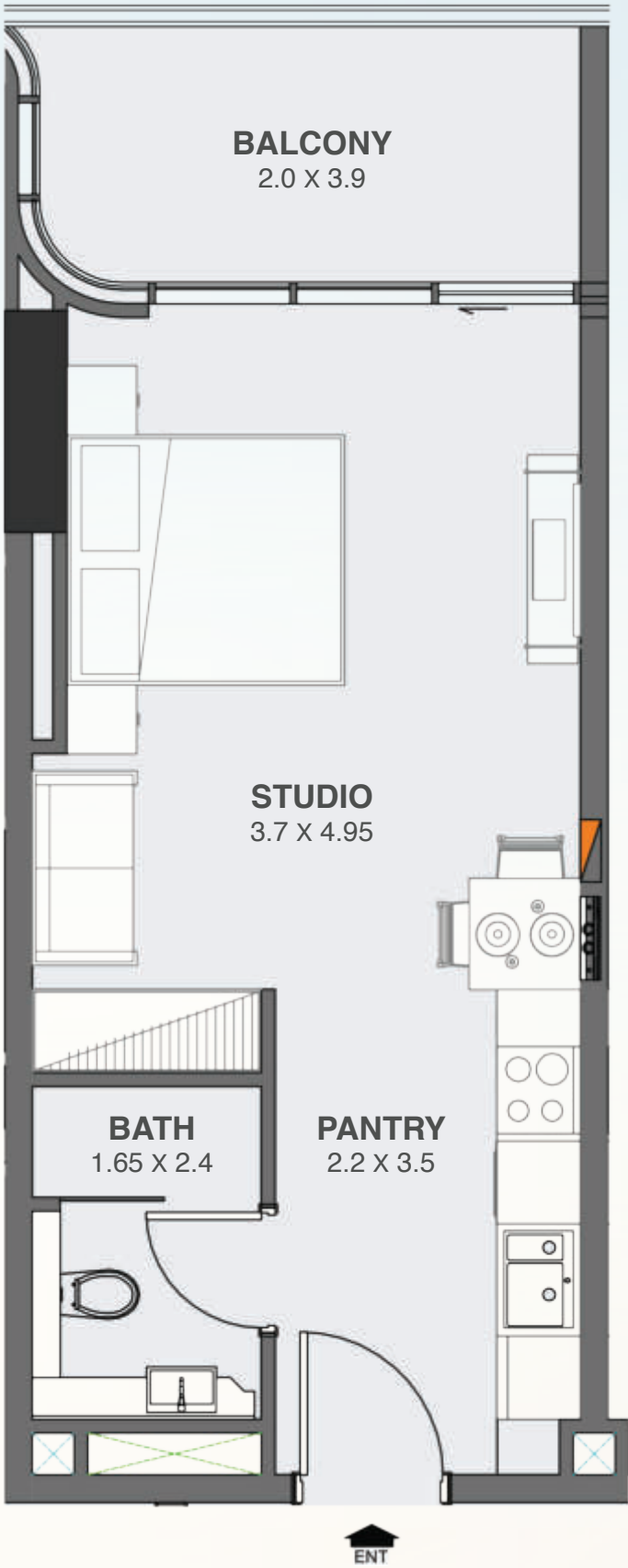
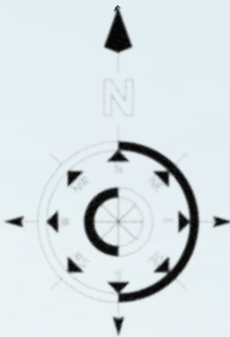
Embark on a journey of refined living with our meticulously crafted floor plans, designed to harmonize elegance with functionality.

## Studio Apartment - Large



SUITE AREA	373.50 SQ.FT
TERRACE AREA	87.30 SQ.FT
TOTAL AREA	460.80 SQ.FT

floareá  
Jasís

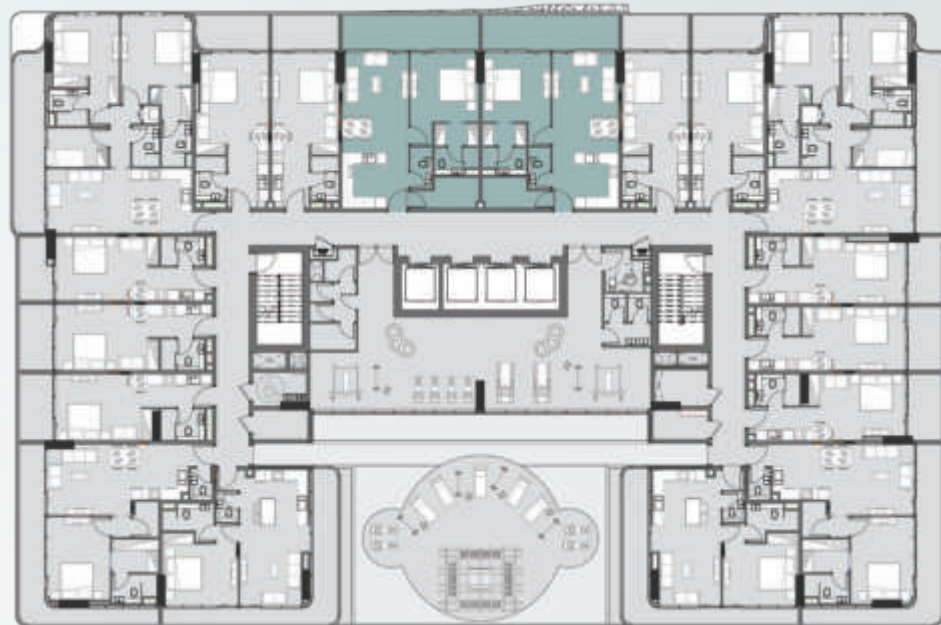


**Disclaimer:**  
All pictures, plans, layouts, information, data, dimensions and details included in this floor plan are indicative only and may change at any time up to the final 'as built' status in accordance with final designs of the project, regulatory approvals and planning permissions.

# Unit Layout

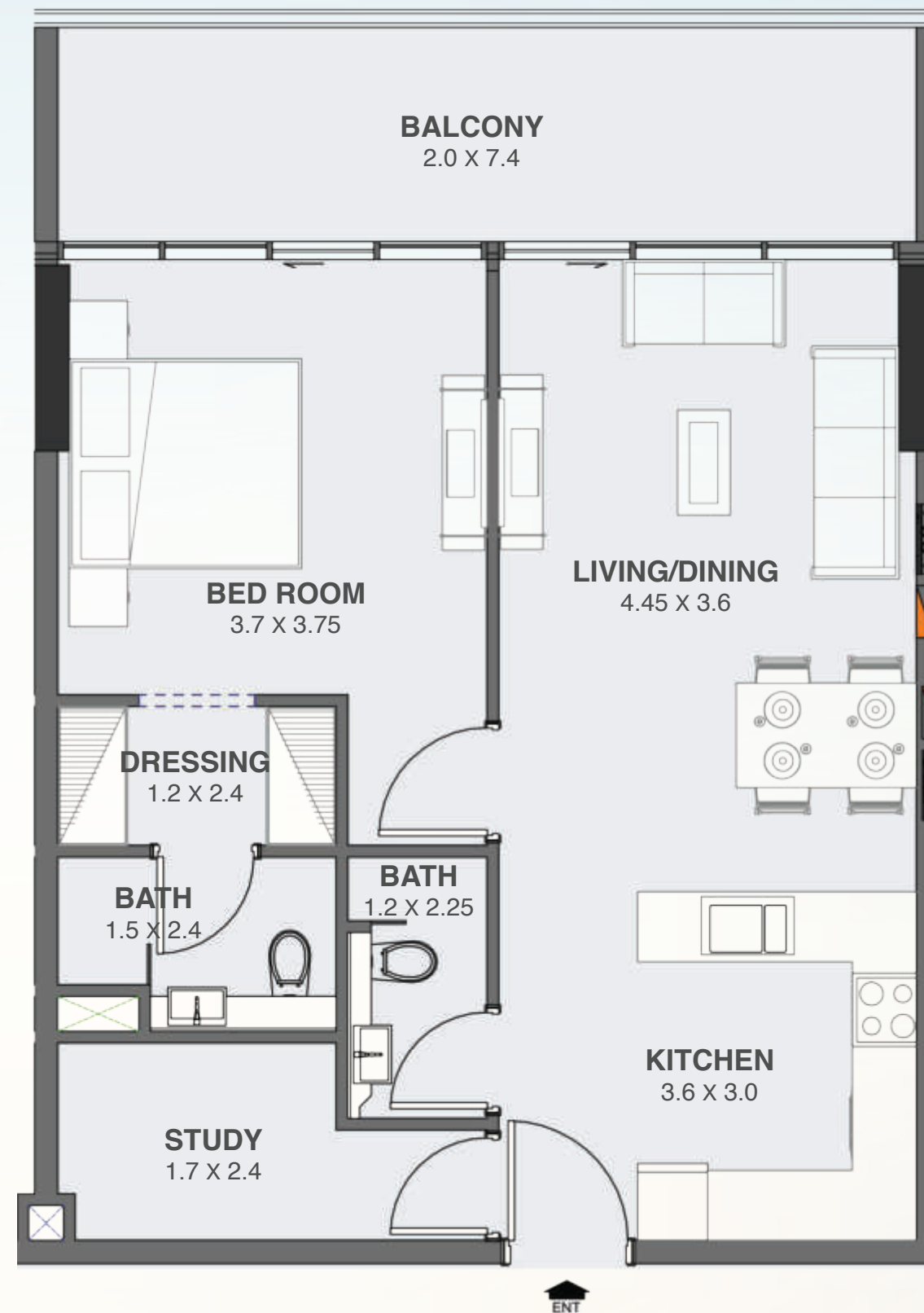
Embark on a journey of refined living with our meticulously crafted floor plans, designed to harmonize elegance with functionality.

## 1 Bedroom With Study - Type A



SUITE AREA	703.50 SQ.FT
TERRACE AREA	161.00 SQ.FT
TOTAL AREA	864.50 SQ.FT

floareá  
Jasís



**Disclaimer:**

All pictures, plans, layouts, information, data, dimensions and details included in this floor plan are indicative only and may change at any time up to the final 'as built' status in accordance with final designs of the project, regulatory approvals and planning permissions.



# Unit Layout

Embark on a journey of refined living with our meticulously crafted floor plans, designed to harmonize elegance with functionality.

## 1 Bedroom With Study - Type B



SUITE AREA	723.44 SQ.FT
TERRACE AREA	132.72 SQ.FT
TOTAL AREA	856.16 SQ.FT



**Disclaimer:**  
All pictures, plans, layouts, information, data, dimensions and details included in this floor plan are indicative only and may change at any time up to the final 'as built' status in accordance with final designs of the project, regulatory approvals and planning permissions.

# Unit Layout

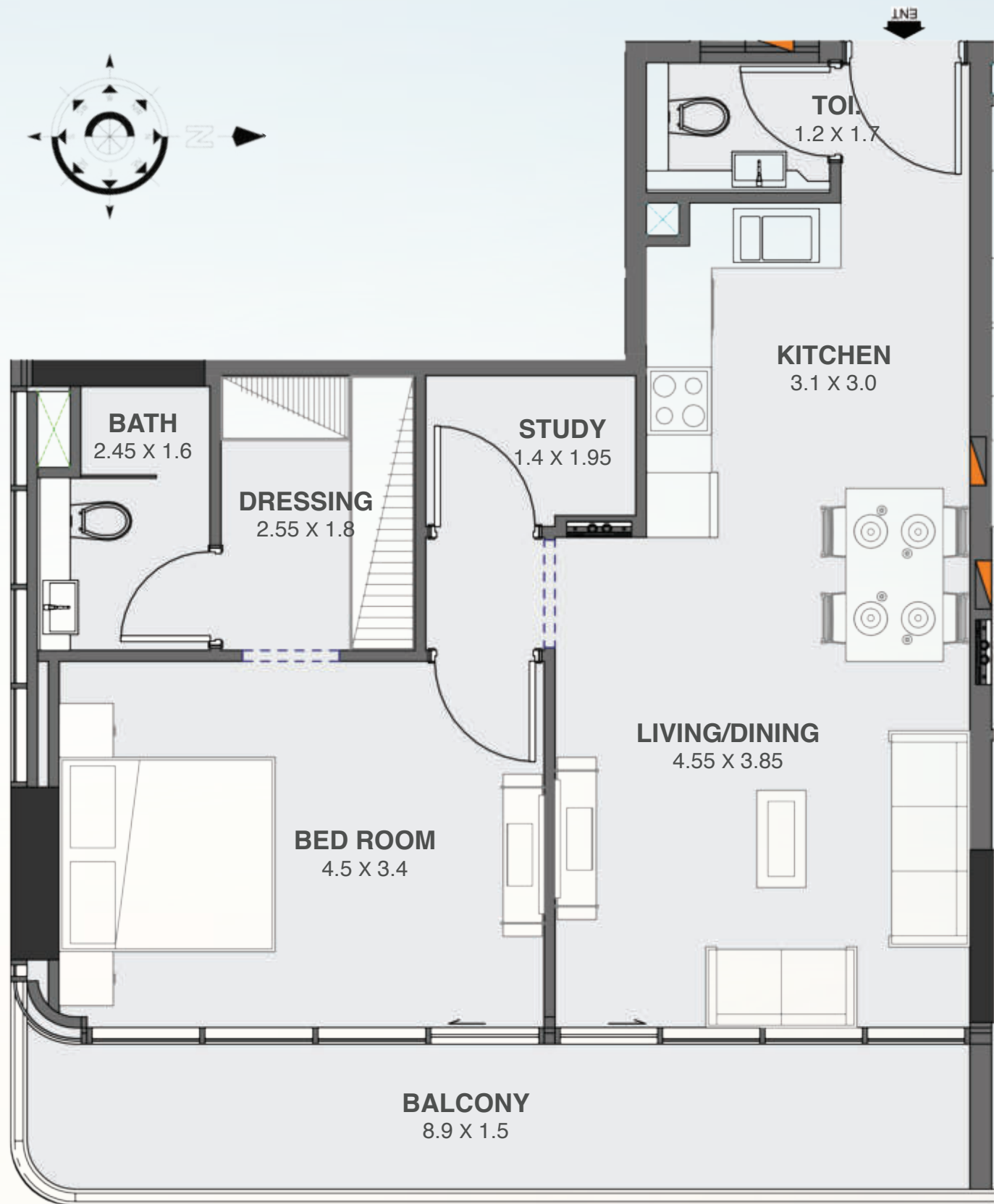
Embark on a journey of refined living with our meticulously crafted floor plans, designed to harmonize elegance with functionality.

## 1 Bedroom With Study - Type C



SUITE AREA	684.80 SQ.FT
TERRACE AREA	141.00 SQ.FT
TOTAL AREA	825.80 SQ.FT

floareá  
Gasis



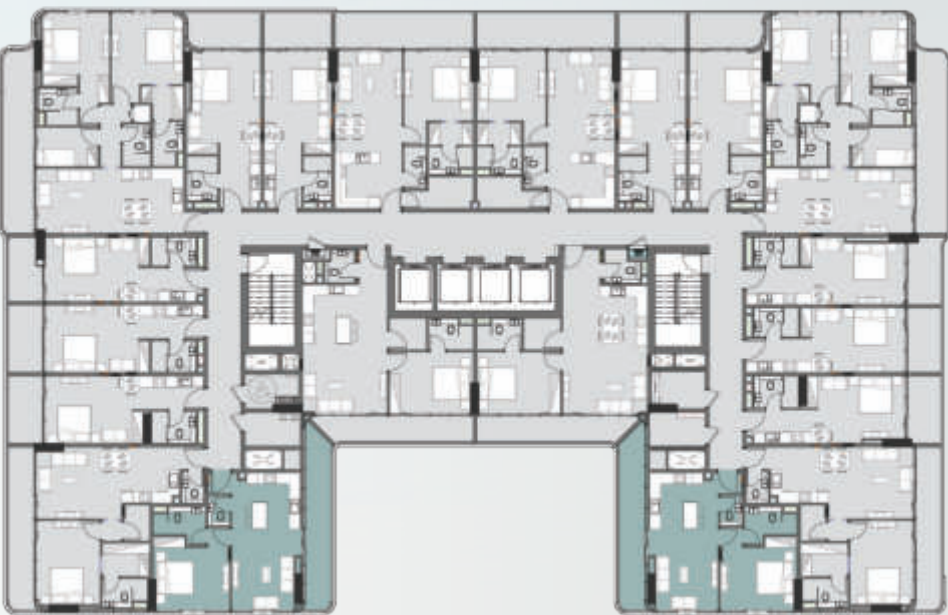
**Disclaimer:**

All pictures, plans, layouts, information, data, dimensions and details included in this floor plan are indicative only and may change at any time up to the final 'as built' status in accordance with final designs of the project, regulatory approvals and planning permissions.

# Unit Layout

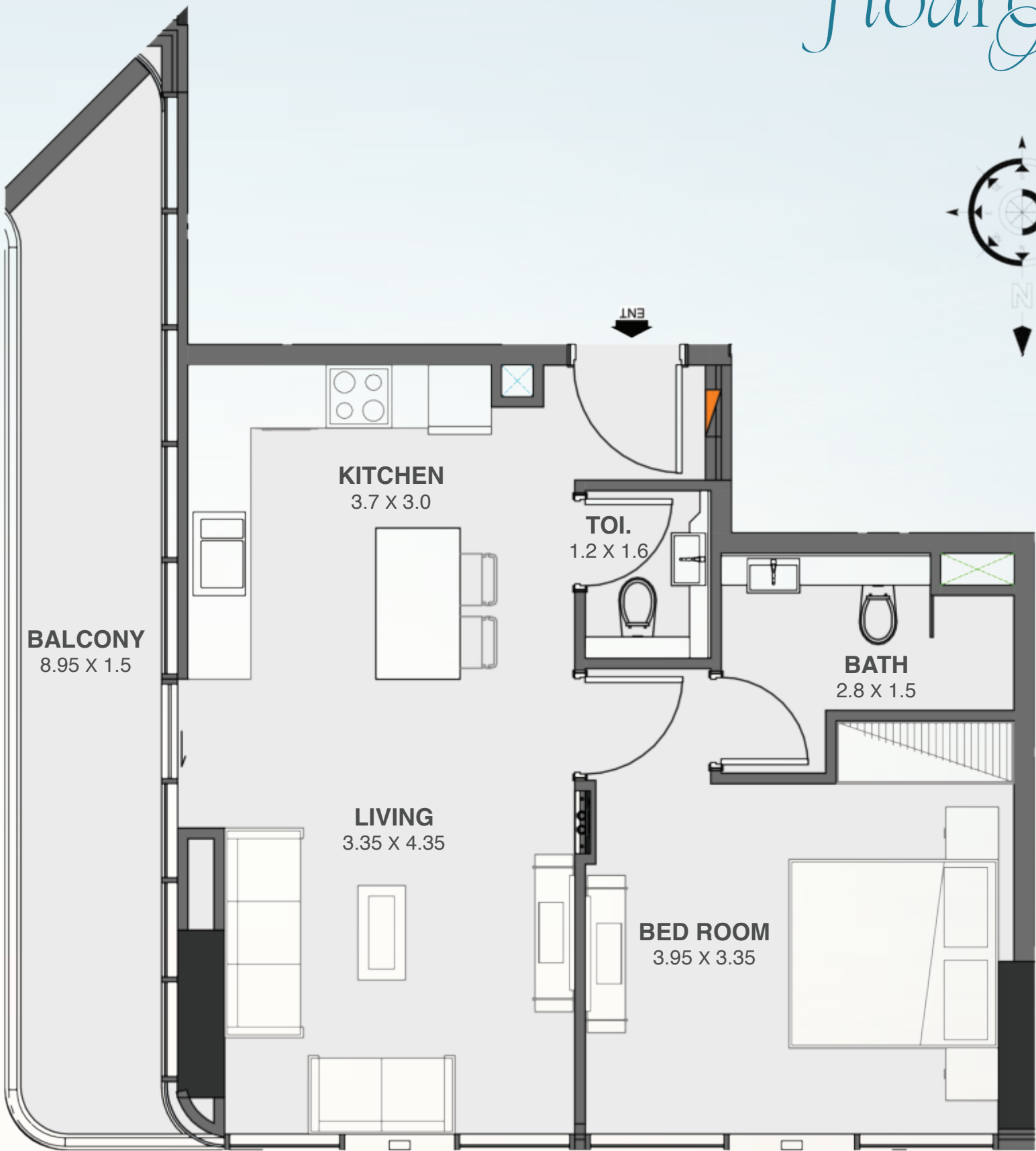
Embark on a journey of refined living with our meticulously crafted floor plans, designed to harmonize elegance with functionality.

## 1 Bedroom Apartment - Type D



SUITE AREA	598.80 SQ.FT
TERRACE AREA	163.72 SQ.FT
TOTAL AREA	762.52 SQ.FT

floareá  
Oasis



**Disclaimer:**  
All pictures, plans, layouts, information, data, dimensions and details included in this floor plan are indicative only and may change at any time up to the final 'as built' status in accordance with final designs of the project, regulatory approvals and planning permissions.



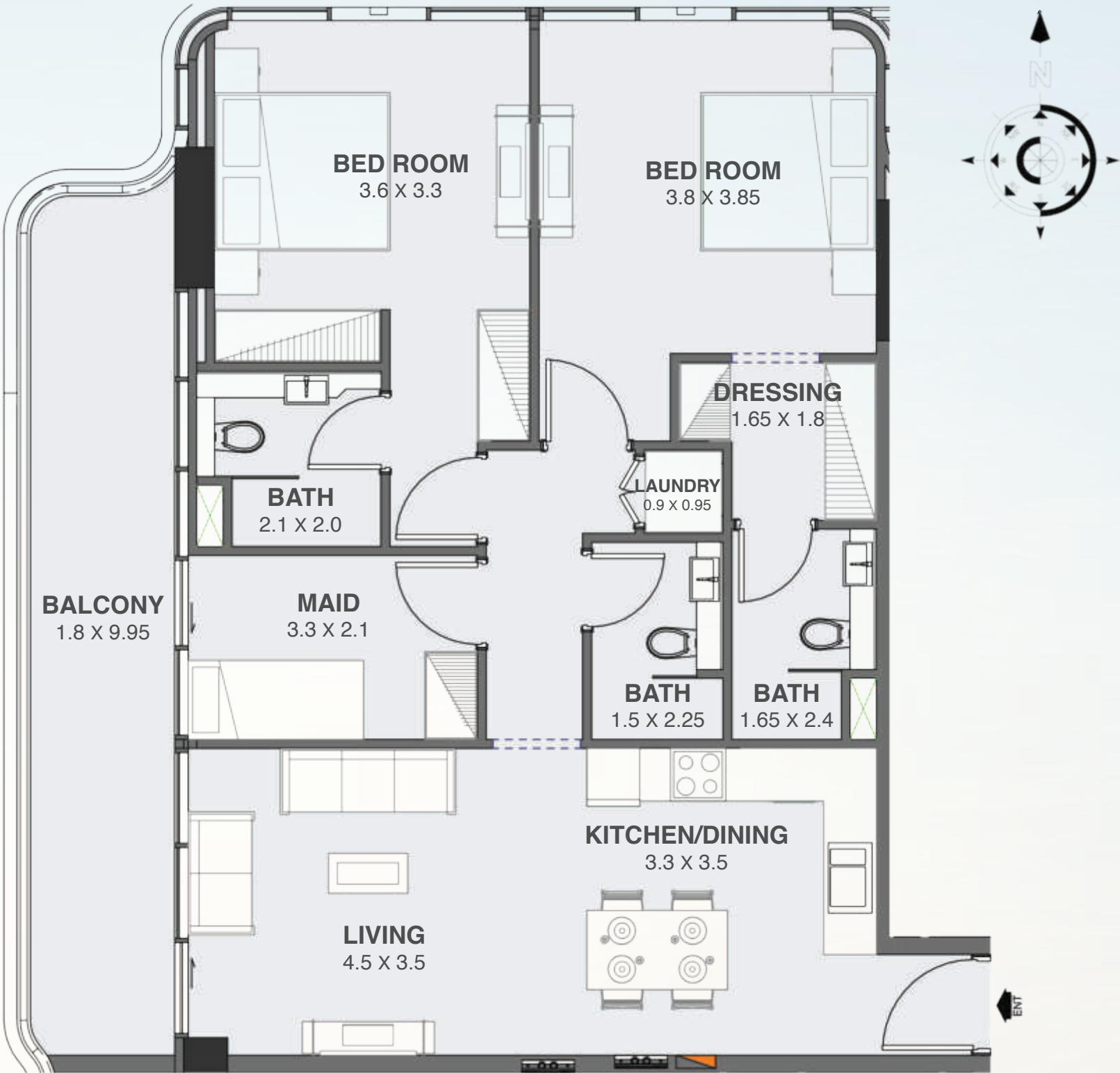
# Unit Layout

Embark on a journey of refined living with our meticulously crafted floor plans, designed to harmonize elegance with functionality.

## 2 Bedroom With Maid - Standard



SUITE AREA	1039.15 SQ.FT
TERRACE AREA	197.00 SQ.FT
TOTAL AREA	1236.15 SQ.FT



**Disclaimer:**  
All pictures, plans, layouts, information, data, dimensions and details included in this floor plan are indicative only and may change at any time up to the final 'as built' status in accordance with final designs of the project, regulatory approvals and planning permissions.





housebook

international real estate  
IT-platform for agents

Whatsapp contacts



Partnership managers



Alevtina  
Kapustina



Svetlana  
Guseva

housebook.deals

partner@housebook.deals