

THE HUDSON

Opal

by CRYSTAL

DUBAI, JVC 15

LOOKBOOK



Highlights

- 2-3 mins - Dual-exit access to Hessa Street
- 3-5 mins - Direct connection to Al Khail Road
- 10 mins - Dubai Hills Mall
- 15 mins - Dubai Marina
- 20 mins - Downtown Dubai
- 25 mins - DXB & DWC Airports
- 5-10 min walk (planned corridor) - High probability future metro station





What Opal Means

Opal — The Hudson is conceived as a refined urban residence shaped by clarity, light, and proportion.

Inspired by the Opal gemstone, the project reflects understated brilliance — architecture that feels composed by day and luminous by night. Clean lines, layered horizontals, and softened edges create a façade that is both contemporary and enduring.

The building's identity is defined by:

- Continuous glass expression
- Flowing balcony geometry
- Balanced solid-to-void rhythm
- Warm material accents
- Light-responsive architectural detailing

Together, these elements create a structure that is visually distinctive while remaining calm and livable in character.

Every detail in Opal reflects Crystal's commitment to architectural craft

Project Overview:

Total Units: 96

Studios = 34

1 BHK 1.5 Bath = 22

1 BHK 2 Bath = 20

1 BHK 2 Bath + ST = 19

3 BHK 3 Bath + ST = 01

Highlights

- Multi-level **Parking** facility with ample capacity
- Dedicated **EV charging stations**
- Grand **double-height entrance lobby** with an elegant foyer
- Versatile **multipurpose area** for events and gatherings
- **Three high-speed accessible elevators** for seamless access
- Expansive **28m pool** with deck area
- Basketball/Pickleball court for active recreation
- Fully equipped **fitness center** with modern gym facilities
- Luxurious **steam room** for relaxation and wellness
- Dedicated **children's pool** and play area
- Outdoor **Lounge** with Barbecue
- **Pet-friendly** building
- **Chiller free & low maintenance**



Lifestyle Made Effortless

At Opal — The Hudson, the living experience begins at arrival. The entrance and lobby are designed as a transition — from city movement to residential calm — expressed through height, light, and material warmth.

The **double-height lobby** creates an immediate sense of openness and proportion, with full-height glazing, layered textures, and refined detailing that set the tone for the building's character.

Access is seamless and secure, with controlled entry, integrated surveillance, and smooth vertical circulation through **high-speed elevators** — ensuring every arrival and departure feels effortless.

Behind the scenes, **multi-level parking** and dedicated **EV charging support** modern mobility without interrupting the visual and spatial quality of the ground experience.

where thoughtful
design meets
everyday function.

Seamless Vertical Living



The elevator lobby at **Opal — The Hudson** extends the building's refined design language, turning everyday movement into a calm, well-composed experience. High-speed elevators and thoughtfully finished transition spaces ensure smooth and effortless access throughout.

An Active Space for Everyday Living



The **multi-purpose sports court** completes the experience, accommodating paddle and basketball games and giving residents a **vibrant space to stay active or unwind with friends**, all framed by greenery and open skies.

A Space to Relax and Recharge

Step outside to an spacious recreation deck
crafted for both leisure and vitality,
seamlessly connecting to the 28-metre
swimming pool that celebrates balance,
community, and wellbeing





A state-of-the-art **fitness center** overlooking lush landscaped views creates an inspiring **space for daily wellness**, filled with natural light and calming surroundings. **Adjoining steam rooms, private showers, and secure lockers** ensure a seamless transition from activity to relaxation.



Step outdoors to an elegant **barbecue lounge** and **dedicated play areas**, designed for effortless social moments and family time. With shaded seating, ambient lighting, and thoughtfully crafted spaces, every gathering feels **refined and comfortable under the Dubai sky**.

A Look Inside

Opal's story progresses from the exterior into the interior, continuing the play of contemporary with mid-century modern revival. It's our take on soulful minimalism, maximizing space and comfort, offered in both furnished and unfurnished, for all-round home wellness.

Designed with both intention and intuition, these home spaces give you the freedom to make your own stories.





Some features you'll love

Our carefully designed residences feature simple layouts, combining openness and privacy. Open plans, full height glass doors and windows facing balcony and terraces bring in generous natural light with ventilation, creating seamless indoor-outdoor living.

- Stone finish countertops and backsplash
- Waterfall island with full stone cladding
- Custom wood cabinetry with soft-close fittings
- Bosch or equivalent appliances

Options for both furnished and unfurnished spaces are available.

Studio unfurnished starting from 650,000 AED

1 Bed unfurnished starting from 985,000 AED

Other payment plan options available

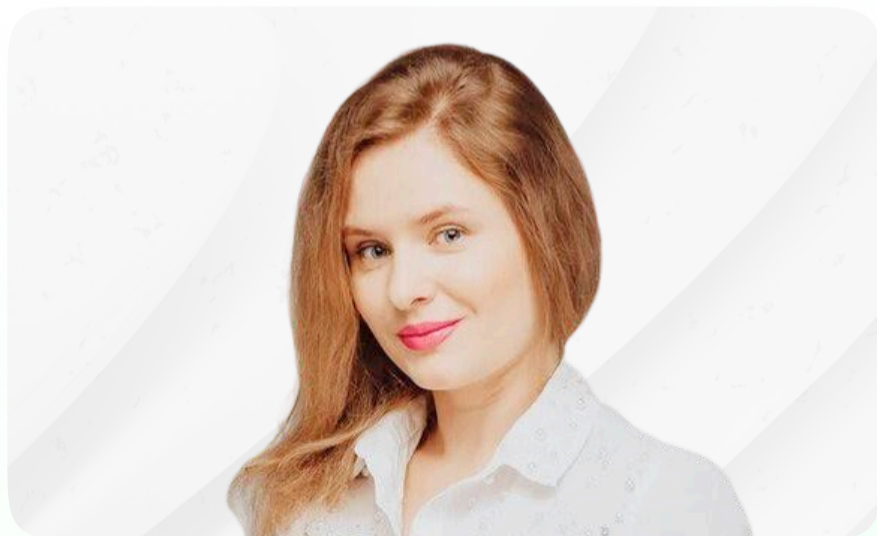




housebook international real estate
IT-platform for agents

Whatsapp contacts 

Partnership managers



Alevtina Kapustina



Svetlana Guseva

housebook.deals

partner@housebook.deals