

COVE
EDITION 2
BY IMTIAZ

IMTIAZ

AN OASIS IN THE SKY

Welcome to Cove Edition 2 by Imtiaz, located in the heart of Dubailand. Here the art of luxury living reaches new heights. Nestled in the skies, this exclusive community invites you to embrace a refined lifestyle, designed for those who appreciate the finer things in life.



DESIGNER STUDIO APARTMENT





Your peaceful haven awaits. Designed with custom furniture and soft, calming tones, these studio apartments are the perfect blend of comfort and style. Thoughtful lighting and subtle gold accents add a touch of luxury to your everyday life.

DESIGNER ONE BEDROOM APARTMENT





Modern living at its finest. Our one-bedroom apartments are designed for those who value aesthetics and functionality. With sleek interiors and an inviting atmosphere, these spaces are perfect for a vibrant, dynamic lifestyle.

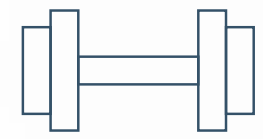
DESIGNER TWO BEDROOM
APARTMENT



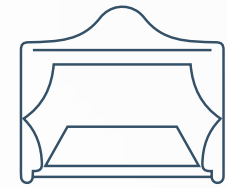


Tranquility meets elegance in our two-bedroom residences. Every element is carefully curated to create a space that feels like a true sanctuary—where comfort and timeless design come together.

AMENITIES



Fully Equipped
Gym



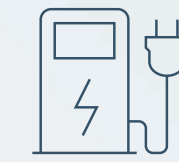
Cabanas



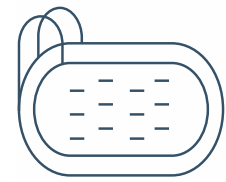
Rooftop
Lounges



Extra Visitor's
Parking



Electric Vehicle
Recharge Station



Kids Pool



Club Room



Private
Pool



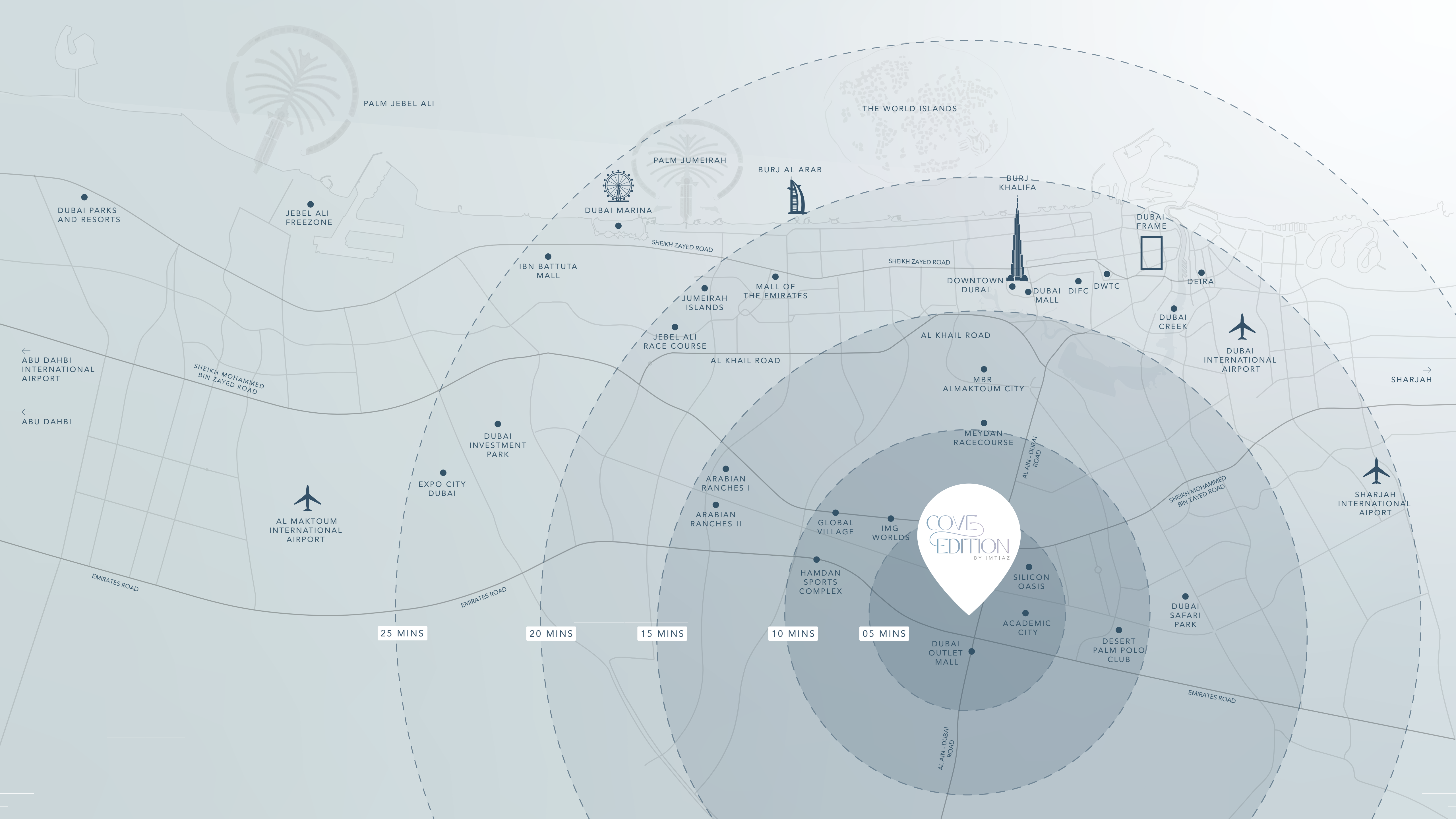
Rooftop Pool



Fully Furnished



BBQ Area



COVE
EDITION
BY IMTIAZ

25 MINS

20 MINS

15 MINS

10 MINS

05 MINS

PALM JEBEL ALI

THE WORLD ISLANDS

PALM JUMEIRAH

BURJ AL ARAB

BURJ KHALIFA

DUBAI FRAME

DUBAI PARKS AND RESORTS

JEBEL ALI FREEZONE

DUBAI MARINA

IBN BATTUTA MALL

MALL OF THE EMIRATES

DOWNTOWN DUBAI

DUBAI MALL

DIFC

DWTC

DEIRA

DUBAI CREEK

← ABU DAHBI INTERNATIONAL AIRPORT

← ABU DAHBI

SHEIKH MOHAMMED BIN ZAYED ROAD

→ SHARJAH

DUBAI INTERNATIONAL AIRPORT

AL MAKTOUM INTERNATIONAL AIRPORT

EXPO CITY DUBAI

DUBAI INVESTMENT PARK

JEBEL ALI RACE COURSE

JUMEIRAH ISLANDS

AL KHAIL ROAD

AL KHAIL ROAD

MBR ALMAKTOUM CITY

MEYDAN RACECOURSE

ARABIAN RANCHES I

ARABIAN RANCHES II

GLOBAL VILLAGE

IMG WORLDS

HAMDAN SPORTS COMPLEX

SILICON OASIS

ACADEMIC CITY

DUBAI OUTLET MALL

DESERT PALM POLO CLUB

DUBAI SAFARI PARK

SHARJAH INTERNATIONAL AIRPORT

EMIRATES ROAD

EMIRATES ROAD

EMIRATES ROAD

AL AIN - DUBAI ROAD

AL AIN - DUBAI ROAD

SHEIKH MOHAMMED BIN ZAYED ROAD

DUBAI OUTLET MALL	05 mins
ACADEMIC CITY	05 mins
SILICON OASIS	05 mins
GLOBAL VILLAGE	10 mins
IMG WORLD	10 mins
HAMDAN SPORTS COMPLEX	10 mins
DESERT PALM POLO CLUB	10 mins
DUBAI SAFARI PARK	10 mins
MEYDAN RACECOURSE	15 mins
ARABIAN RANCHES 1 & 2	15 mins
DUBAI INTERNATIONAL AIRPORT	20 mins
MBR AL MAKTOUM CITY	20 mins
DOWNTOWN DUBAI	20 mins
DUBAI MALL	20 mins
BURJ KHALIFA	20 mins
DUBAI FRAME	20 mins
DUBAI CREEK	20 mins
MALL OF THE EMIRATES	20 mins
DUBAI MARINA	25 mins
PALM JUMEIRAH	25 mins
JEBEL ALI RACE COURSE	25 mins
JUMEIRAH ISLANDS	25 mins
IBN BATTUTA MALL	25 mins
DUBAI PARKS AND RESORTS	25 mins
EXPO CITY DUBAI	25 mins



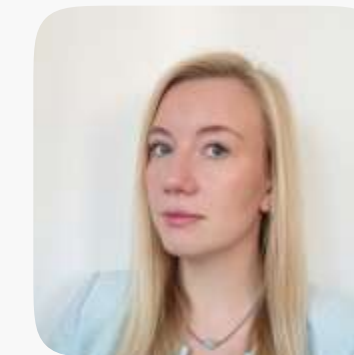


+971 (4) 412-5000

Affiliate
managers



**Alevtina
Kapustina**



**Svetlana
Guseva**

Office

Housebook Real Estate LCC

Dubai Marina, office 2502-01, Dubai, UAE

Company license: 1128098

ae.housebook.deals

partner@housebook.ae

