



AL GHAF

BY TIGER PROPERTIES

FLOOR PLANS

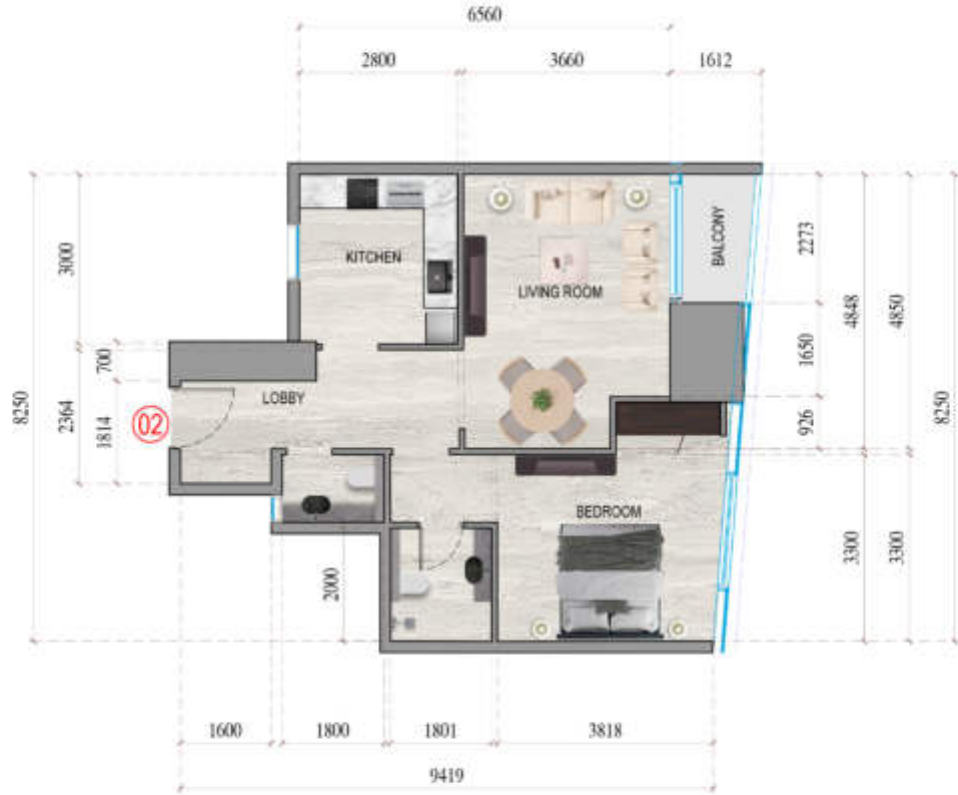
UNIT PLANS



| |
|-------------------------------------|
| APARTMENT 1 |
| APARTMENT TYPE: 2 BEDROOM |
| FLOORING: 2nd-3rd, 12th-14th & 16th |



| | |
|----------------|-------------------------------|
| APARTMENT 2 | |
| APARTMENT TYPE | 1 BEDROOM |
| FLOOR NO. | 2nd - 8th, 12th - 18th & 19th |



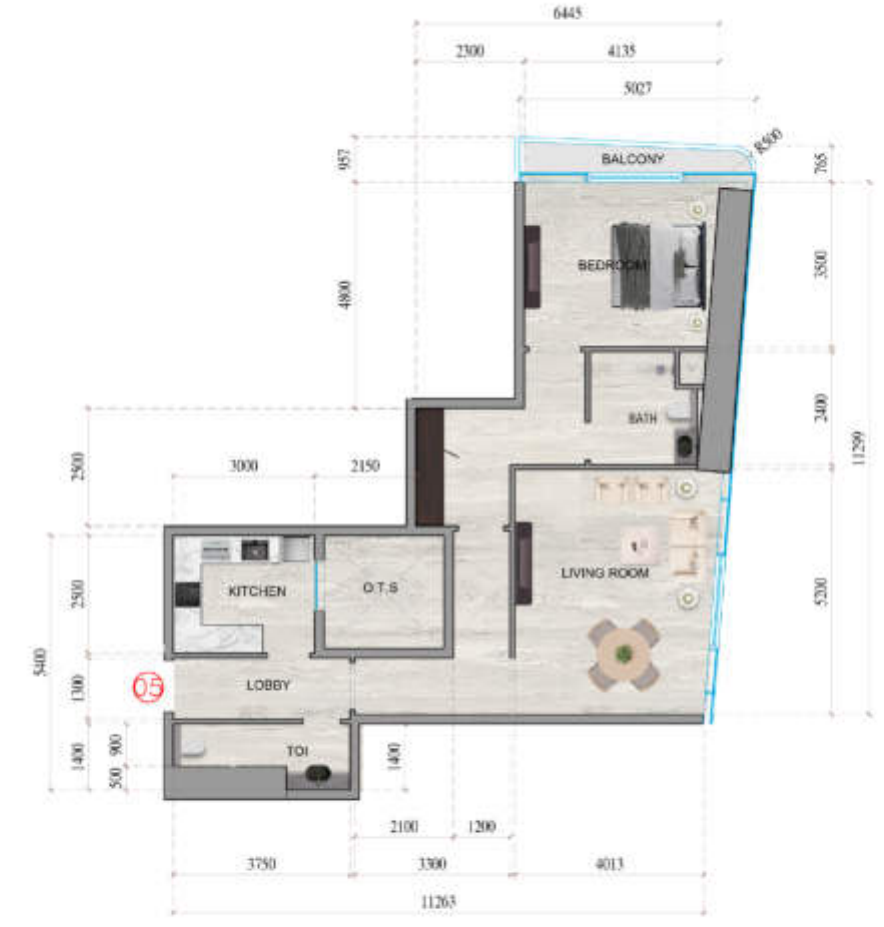
| | |
|----------------|-------------------------------|
| APARTMENT 3 | |
| APARTMENT TYPE | 1 BEDROOM |
| FLOOR NO. | 2nd - 8th, 12th - 18th & 19th |



| | |
|------------------|-----------------------------|
| APARTMENT 4 | |
| APARTMENT TYPE : | 1 BEDROOM |
| FLOORING : | 2nd - 9th, 12th-18th & 19th |



| | |
|------------------|-----------------------------|
| APARTMENT 5 | |
| APARTMENT TYPE : | 1 BEDROOM |
| FLOORING : | 2nd - 9th, 12th-18th & 19th |



| | |
|--------------------|-------------------------|
| APARTMENT 6 | |
| APARTMENT TYPE | 2 BEDROOM |
| FLOOR NO. | 204, 80, 120, 190 & 198 |



| | |
|--------------------|-------------------------|
| APARTMENT 7 | |
| APARTMENT TYPE | 2 BEDROOM |
| FLOOR NO. | 204, 80, 120, 190 & 198 |



| | |
|--------------------|---------------------------|
| APARTMENT 8 | |
| APARTMENT TYPE : | 1 BEDROOM |
| FLOOR NO. : | 204 - 205, 206, 104 & 105 |



| | |
|--------------------|--------------------------|
| APARTMENT 9 | |
| APARTMENT TYPE : | 1 BEDROOM |
| FLOOR NO. : | 204 - 205, 104-105 & 106 |



| | |
|-----------------|------------------------|
| APARTMENT 10 | |
| APARTMENT TYPE: | 1 BEDROOM |
| FLOOR NO.: | 24 - 80, 120-180 & 180 |



| | |
|-----------------|------------------------|
| APARTMENT 11 | |
| APARTMENT TYPE: | 1 BEDROOM |
| FLOOR NO.: | 24 - 80, 120-180 & 180 |



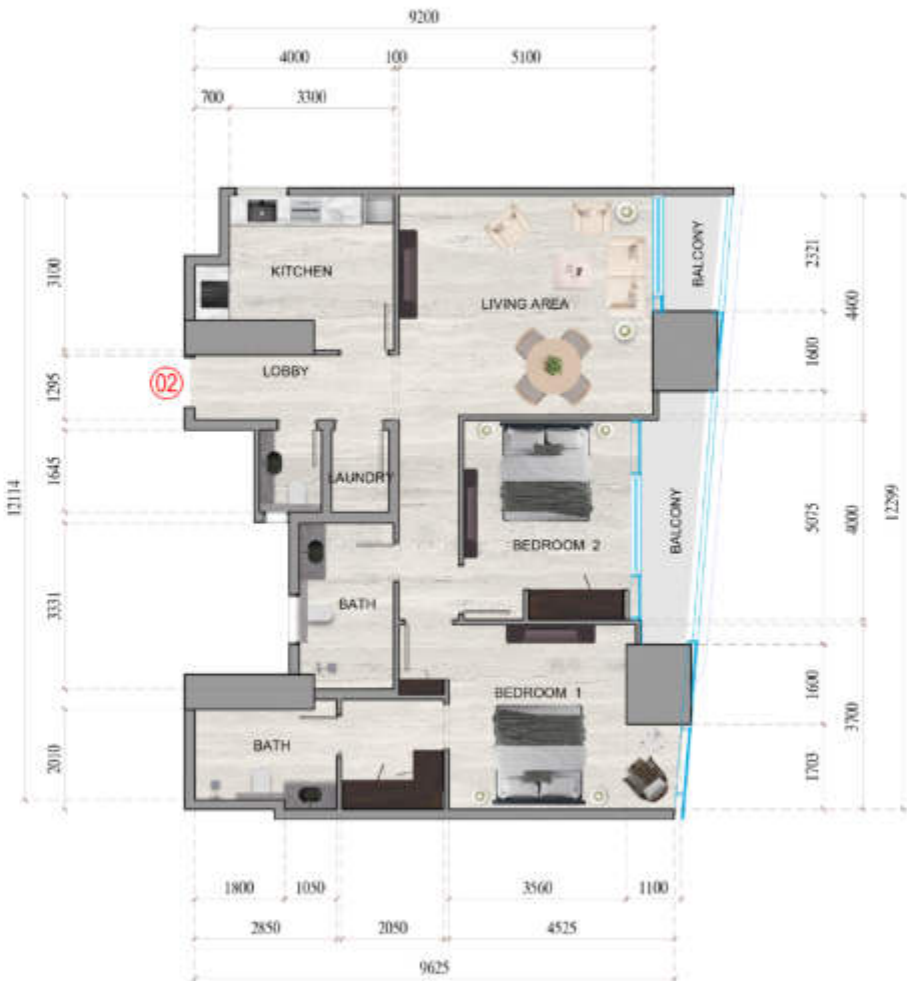
| |
|-----------------------------------|
| APARTMENT 12 |
| APARTMENT TYPE: 3 BEDROOM |
| FLOORING: 204, 89, 129, 198 & 198 |



| |
|---|
| APARTMENT 1 |
| APARTMENT TYPE: 3 BEDROOM |
| FLOORING: 108-118, 109-204, 208-214, 209-434 FLOORING |



| | |
|--------------------|---|
| APARTMENT 2 | |
| APARTMENT TYPE | 2 BEDROOM |
| FLOOR NO. | 100-108, 109-204, 205-304, 305-404 FLOORS |



| | |
|--------------------|---|
| APARTMENT 3 | |
| APARTMENT TYPE | 2 BEDROOM |
| FLOOR NO. | 100-108, 109-204, 205-304, & 400-404 FLOORS |



| | |
|----------------|---|
| APARTMENT 4 | |
| APARTMENT TYPE | 1 BEDROOM |
| FLOORING | 118-185, 214-288, 314-324, 358-358, 414-424 |



| | |
|----------------|-----------------------------|
| APARTMENT 4 | |
| APARTMENT TYPE | 1 BEDROOM |
| FLOORING | 118, 208, 308, 418 FLOORING |



| | |
|--------------------|---|
| APARTMENT 7 | |
| APARTMENT TYPE | 2 BEDROOM |
| FLOORING | 108-118, 186-204, 208-204, 209-424 FLOORS |



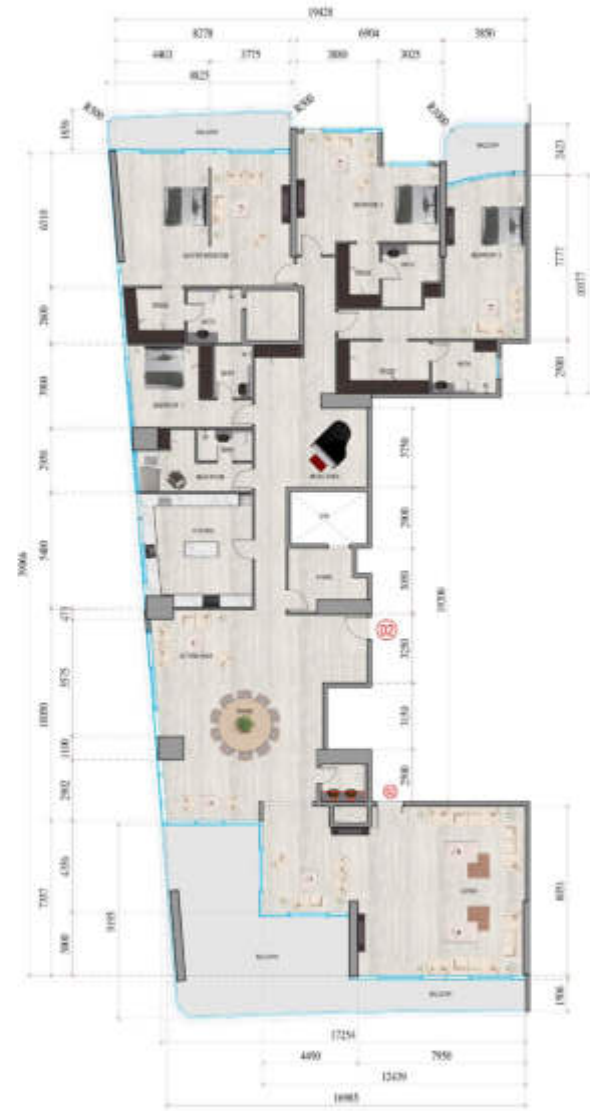
| | |
|--------------------|---|
| APARTMENT 8 | |
| APARTMENT TYPE | 2 BEDROOM |
| FLOORING | 108-118, 186-204, 208-204, 209-424 FLOORS |



| | |
|--------------------|-----------------|
| APARTMENT 1 | |
| APARTMENT TYPE : | 4 BEDROOM |
| FLOOR NO : | 4th & 4th FLOOR |



| | |
|--------------------|-----------------|
| APARTMENT 2 | |
| APARTMENT TYPE : | 4 BEDROOM |
| FLOOR NO : | 4th & 4th FLOOR |



| |
|----------------------------|
| APARTMENT 1 |
| APARTMENT TYPE : 3 BEDROOM |
| FLOORING : 300 - 420 FLOOR |



| |
|--|
| APARTMENT 4 |
| APARTMENT TYPE : 3 BEDROOM |
| FLOORING : 300 - 390 & 410 - 420 FLOOR |



| |
|----------------------------|
| APARTMENT 5 |
| APARTMENT TYPE : 3 BEDROOM |
| FLOOR NO. : 306-4th FLOOR |



| |
|----------------------------|
| APARTMENT 8 |
| APARTMENT TYPE : 3 BEDROOM |
| FLOOR NO. : 306-4th FLOOR |



| |
|---------------------------|
| APARTMENT 4 |
| APARTMENT TYPE: 1 BEDROOM |
| FLOOR PLAN: 4th FLOOR |



| |
|------------------------------------|
| DUPLEX APARTMENT 1 |
| APARTMENT TYPE: DUPLEX - 4 BEDROOM |
| FLOOR NO.: 45 - 46 FLOOR |



1 45th FLOOR PLAN
DUPLEX 1 - LOWER FLOOR



2 46th FLOOR PLAN
DUPLEX 1 - UPPER FLOOR

| |
|------------------------------------|
| DUPLEX APARTMENT 2 |
| APARTMENT TYPE: DUPLEX - 4 BEDROOM |
| FLOOR NO.: 45th - 46th FLOOR |



① 45th FLOOR PLAN
DUPLEX 2 - LOWER FLOOR



② 46th FLOOR PLAN
DUPLEX 2 - UPPER FLOOR

| | |
|--------------------|--------------------|
| DUPLEX APARTMENT 1 | |
| APARTMENT TYPE | DUPLEX - 4 BEDROOM |
| FLOOR NO. | 49-50/F, 1/202 |



① 49th FLOOR PLAN
DUPLEX 1 - LOWER FLOOR



② 50th FLOOR PLAN
DUPLEX 1 - UPPER FLOOR



housebook

international real estate
IT-platform for agents

WhatsApp contacts 

Partnership managers



Alevtina
Kapustina



Svetlana
Guseva

housebook.deals

partner@housebook.deals