

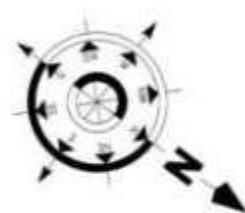
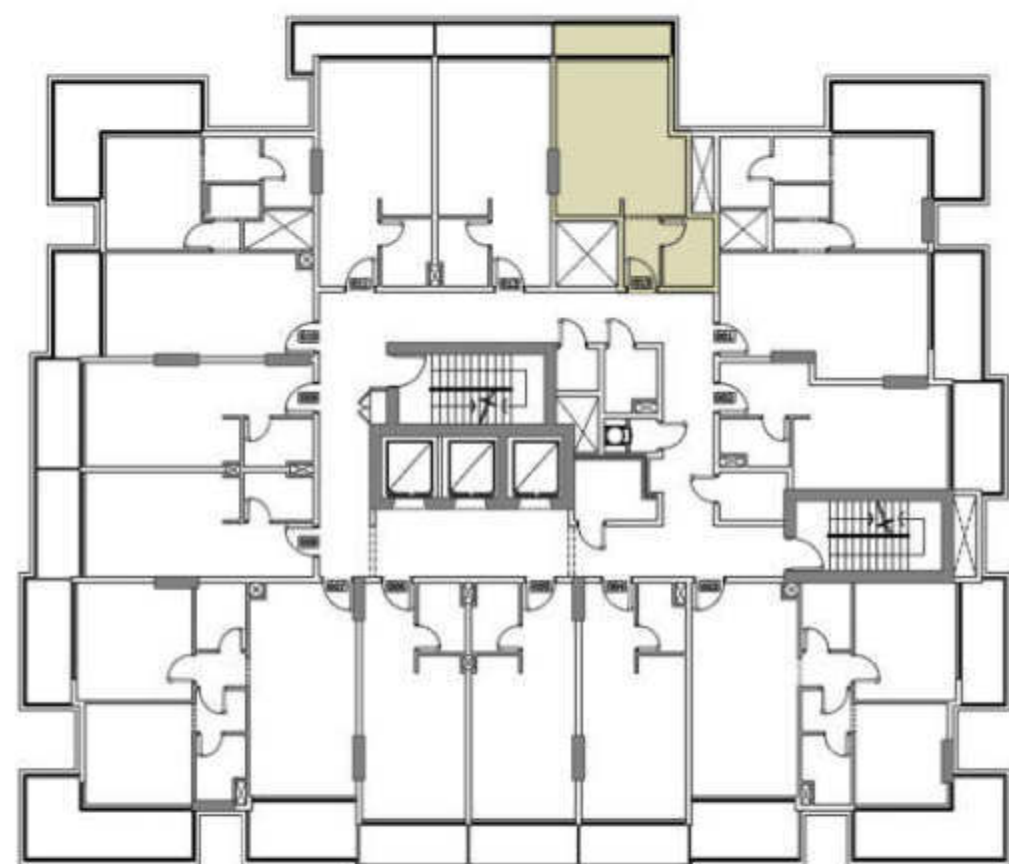
ARLINGTON  
PARK

MAJID<sup>®</sup>  
DEVELOPMENTS

[majiddevelopments.com](http://majiddevelopments.com)



# ARLINGTON PARK



## TYPICAL (3,5,7,9 & 11 ) FLOOR STUDIO APARTMENTS

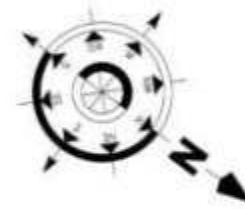
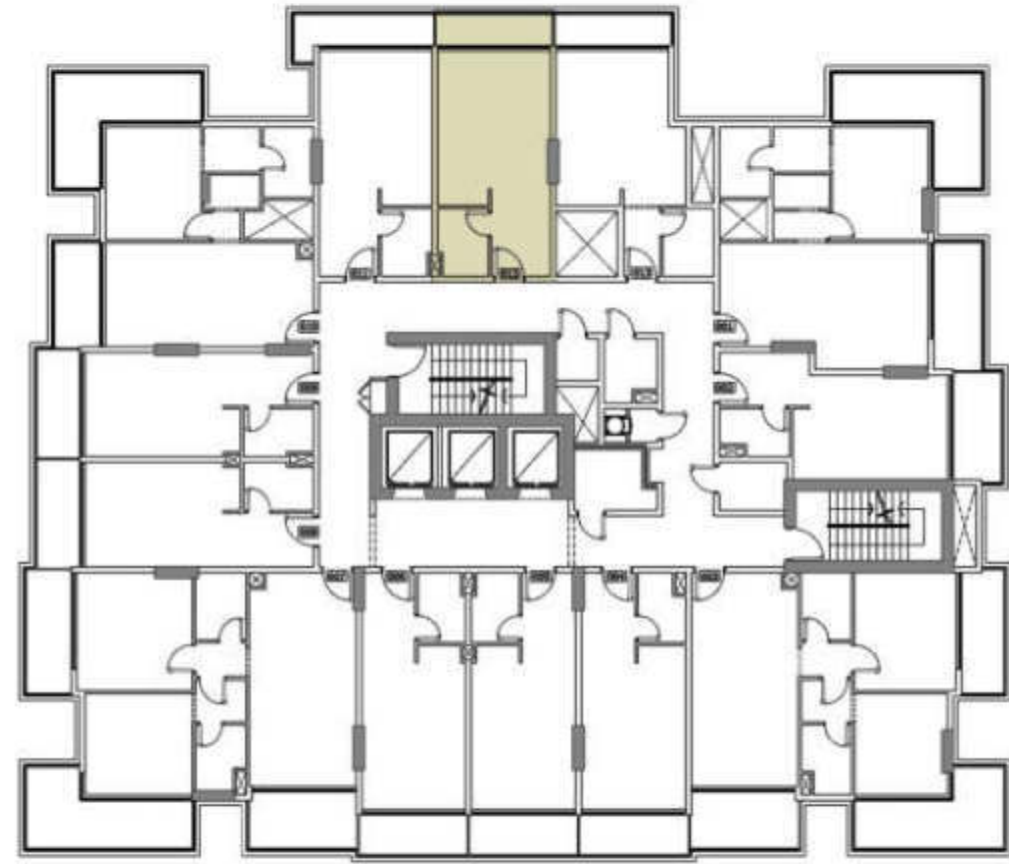
UNIT AREA	370 Sq. ft.
TERR/BAL AREA	56 Sq. ft.
TOTAL AREA	426 Sq. ft.
UNITS	313,513,713,913 & 1113

Disclaimer: all pictures, plans, layouts, information, data and details included in this brochure are indicative only and may change at any time up to the final 'as built' status in accordance with the final designs of the project, regulatory approvals and planning permissions.





# ARLINGTON PARK



## TYPICAL (3,5,7,9 & 11 ) FLOOR STUDIO APARTMENTS

UNIT AREA 369 Sq. ft.

TERR/BAL AREA 55 Sq. ft.

TOTAL AREA 424 Sq. ft.

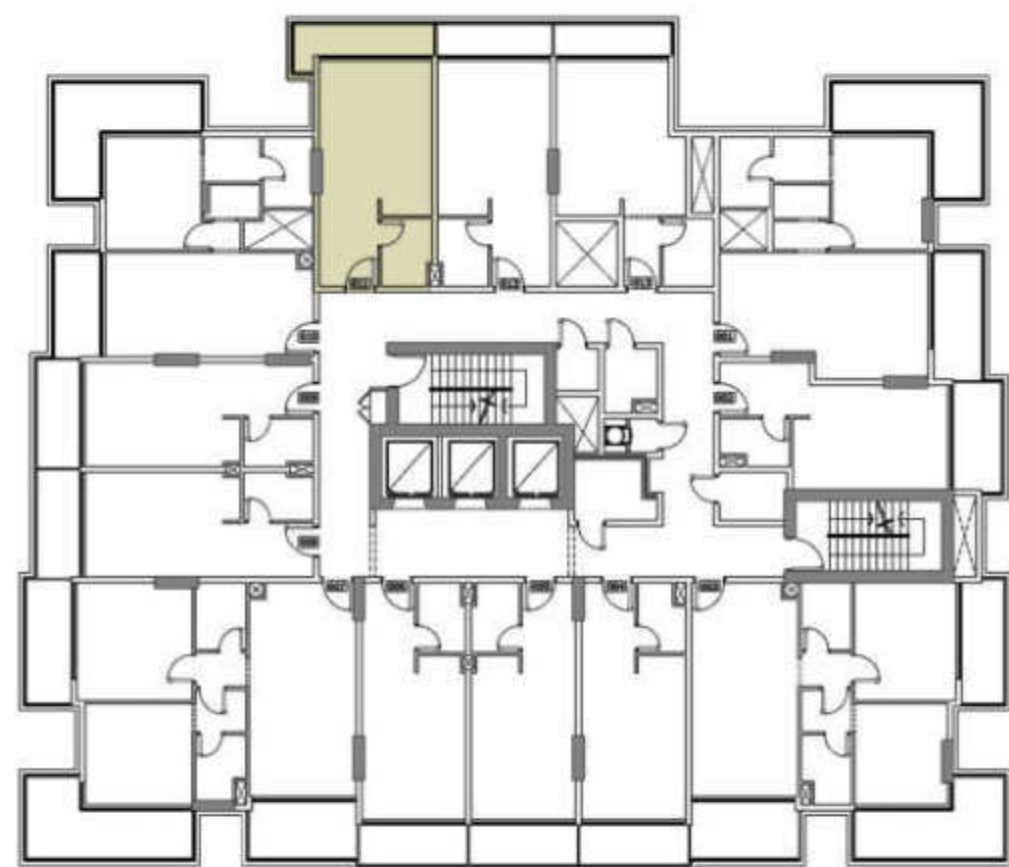
UNITS 312,512,712,912 & 1112

Disclaimer: all pictures, plans, layouts, information, data and details included in this brochure are indicative only and may change at any time up to the final 'as built' status in accordance with the final designs of the project, regulatory approvals and planning permissions.





# ARLINGTON PARK



## TYPICAL (3,5,7,9 & 11 ) FLOOR STUDIO APARTMENTS

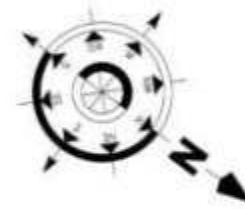
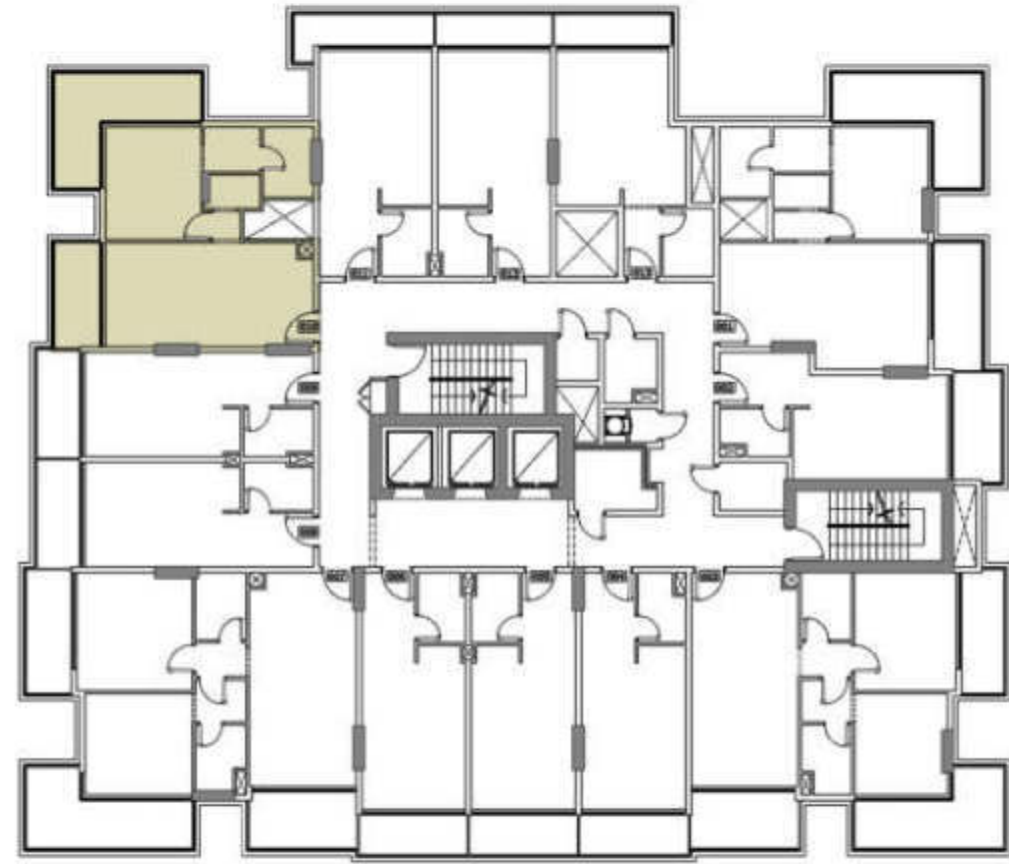
UNIT AREA	369 Sq. ft.
TERR/BAL AREA	71 Sq. ft.
TOTAL AREA	440 Sq. ft.
UNITS	311,511,711,911 & 1111

Disclaimer: all pictures, plans, layouts, information, data and details included in this brochure are indicative only and may change at any time up to the final 'as built' status in accordance with the final designs of the project, regulatory approvals and planning permissions.





# ARLINGTON PARK



## TYPICAL (3,5,7,9 & 11 ) FLOOR 1 BEDROOM APARTMENTS

UNIT AREA 610 Sq. ft.

TERR/BAL AREA 216 Sq. ft.

TOTAL AREA 826 Sq. ft.

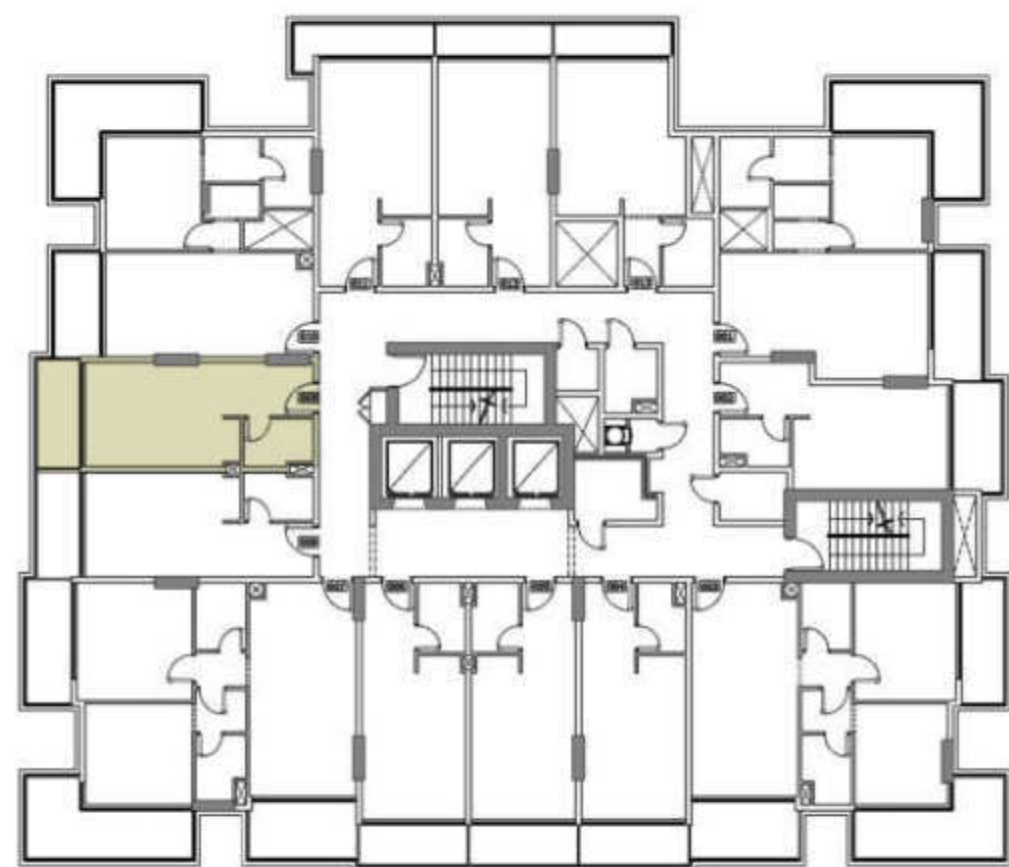
UNITS 310,510,710,910 & 1110

Disclaimer: all pictures, plans, layouts, information, data and details included in this brochure are indicative only and may change at any time up to the final 'as built' status in accordance with the final designs of the project, regulatory approvals and planning permissions.





# ARLINGTON PARK



## TYPICAL (3,5,7,9 & 11 ) FLOOR STUDIO APARTMENTS

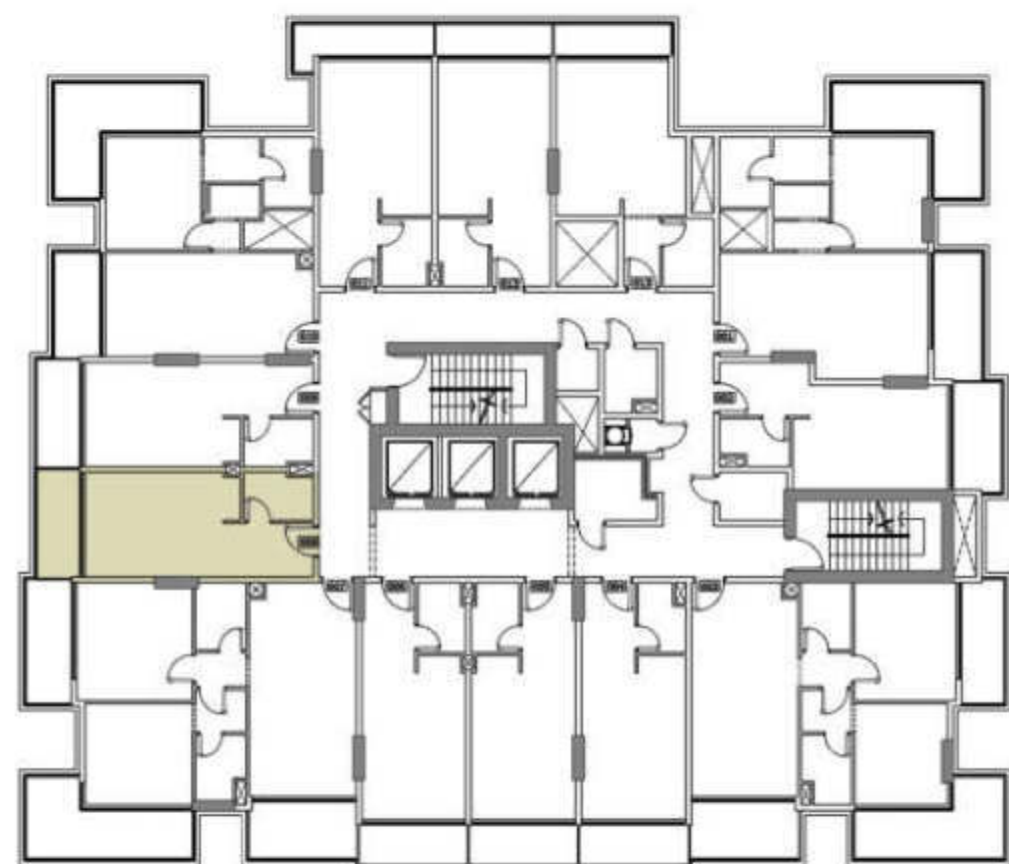
UNIT AREA	345 Sq. ft.
TERR/BAL AREA	68 Sq. ft.
TOTAL AREA	413 Sq. ft.
UNITS	309,509,709,909 & 1109

Disclaimer: all pictures, plans, layouts, information, data and details included in this brochure are indicative only and may change at any time up to the final 'as built' status in accordance with the final designs of the project, regulatory approvals and planning permissions.





# ARLINGTON PARK



## TYPICAL (3,5,7,9 & 11 ) FLOOR STUDIO APARTMENTS

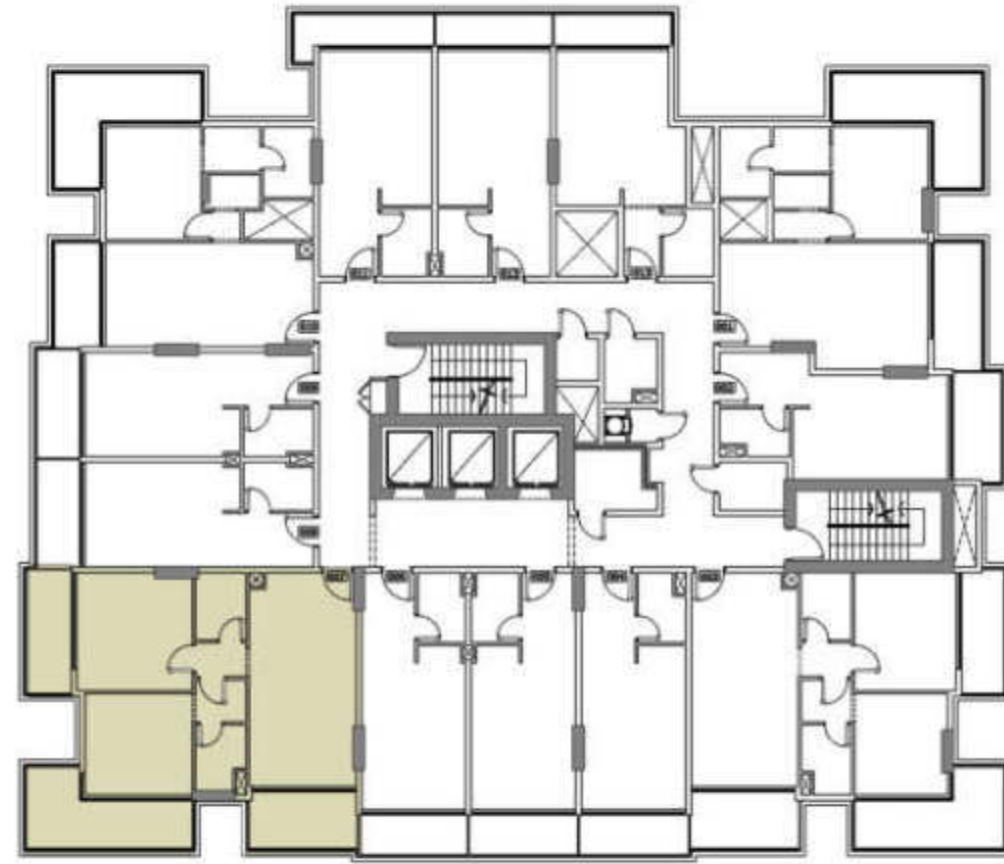
UNIT AREA	345 Sq. ft.
TERR/BAL AREA	68 Sq. ft.
TOTAL AREA	413 Sq. ft.
UNITS	308,508,708,908 & 1108

Disclaimer: all pictures, plans, layouts, information, data and details included in this brochure are indicative only and may change at any time up to the final 'as built' status in accordance with the final designs of the project, regulatory approvals and planning permissions.





# ARLINGTON PARK



## TYPICAL (3,5,7,9 & 11 ) FLOOR 2 BEDROOM APARTMENTS

UNIT AREA 847 Sq. ft.

TERR/BAL AREA 313 Sq. ft.

TOTAL AREA 1160 Sq. ft.

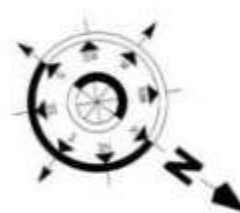
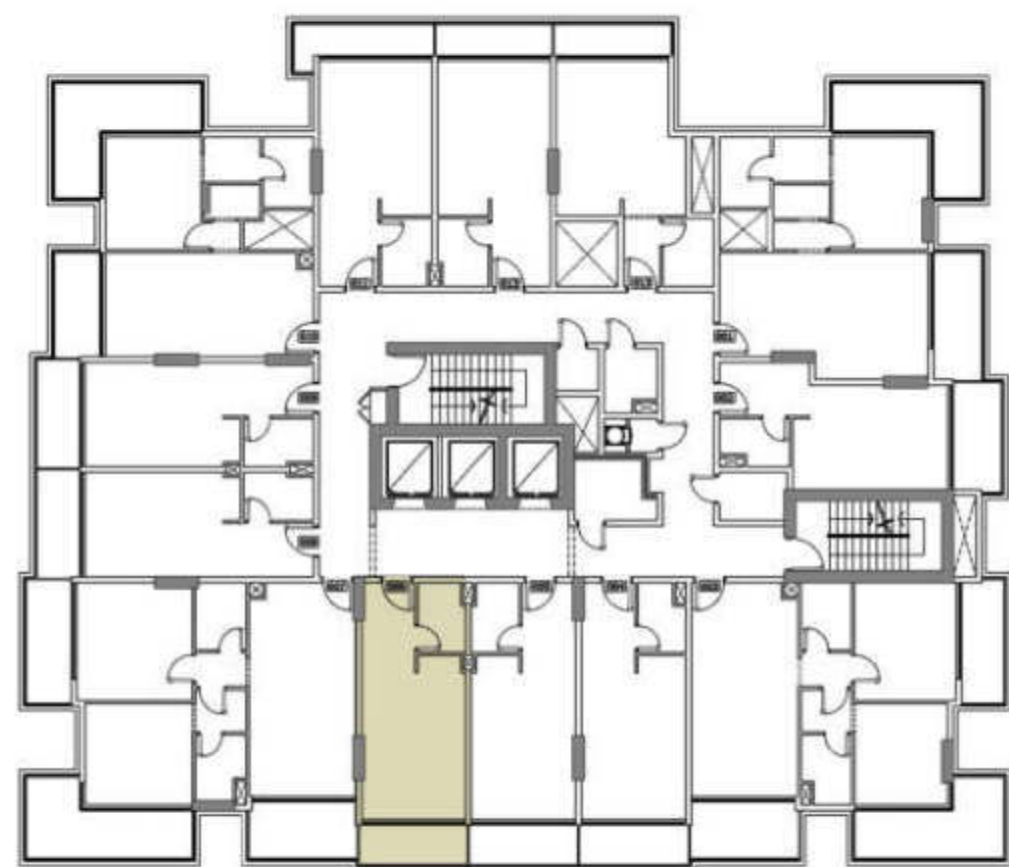
UNITS 307,507,707,907 & 1107

Disclaimer: all pictures, plans, layouts, information, data and details included in this brochure are indicative only and may change at any time up to the final 'as built' status in accordance with the final designs of the project, regulatory approvals and planning permissions.





# ARLINGTON PARK



## TYPICAL (3,5,7,9 & 11 ) FLOOR STUDIO APARTMENTS

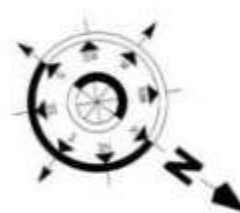
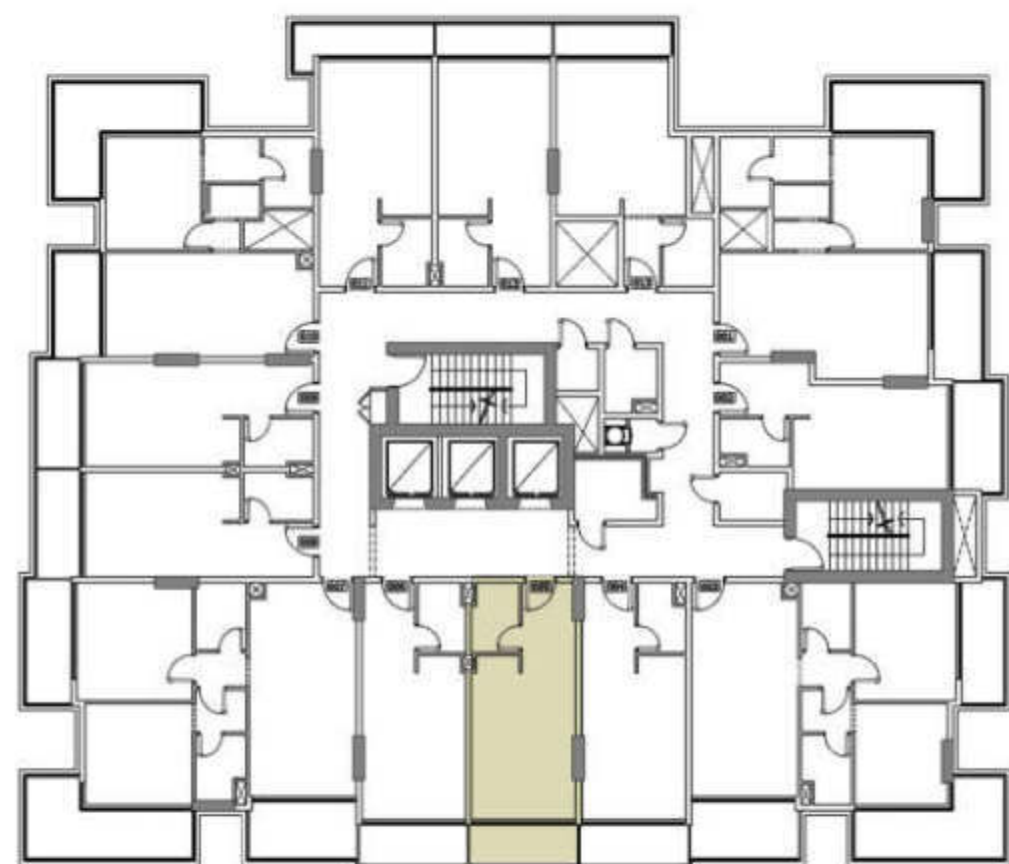
UNIT AREA	357 Sq. ft.
TERR/BAL AREA	64 Sq. ft.
TOTAL AREA	421 Sq. ft.
UNITS	306,506,706,906 & 1106

Disclaimer: all pictures, plans, layouts, information, data and details included in this brochure are indicative only and may change at any time up to the final 'as built' status in accordance with the final designs of the project, regulatory approvals and planning permissions.





# ARLINGTON PARK



## TYPICAL (3,5,7,9 & 11 ) FLOOR STUDIO APARTMENTS

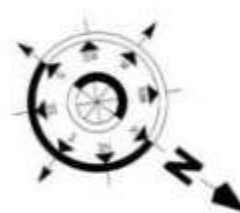
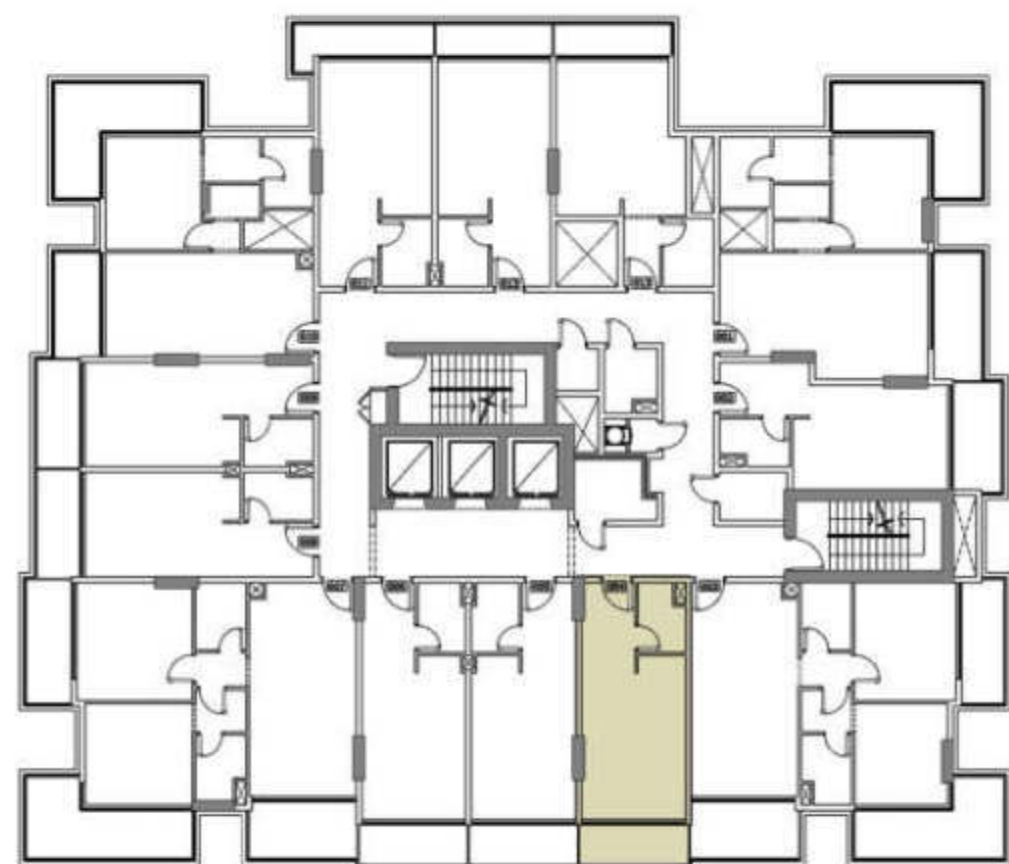
UNIT AREA	357 Sq. ft.
TERR/BAL AREA	64 Sq. ft.
TOTAL AREA	421 Sq. ft.
UNITS	305,505,705,905 & 1105

Disclaimer: all pictures, plans, layouts, information, data and details included in this brochure are indicative only and may change at any time up to the final 'as built' status in accordance with the final designs of the project, regulatory approvals and planning permissions.





# ARLINGTON PARK



## TYPICAL (3,5,7,9 & 11 ) FLOOR STUDIO APARTMENTS

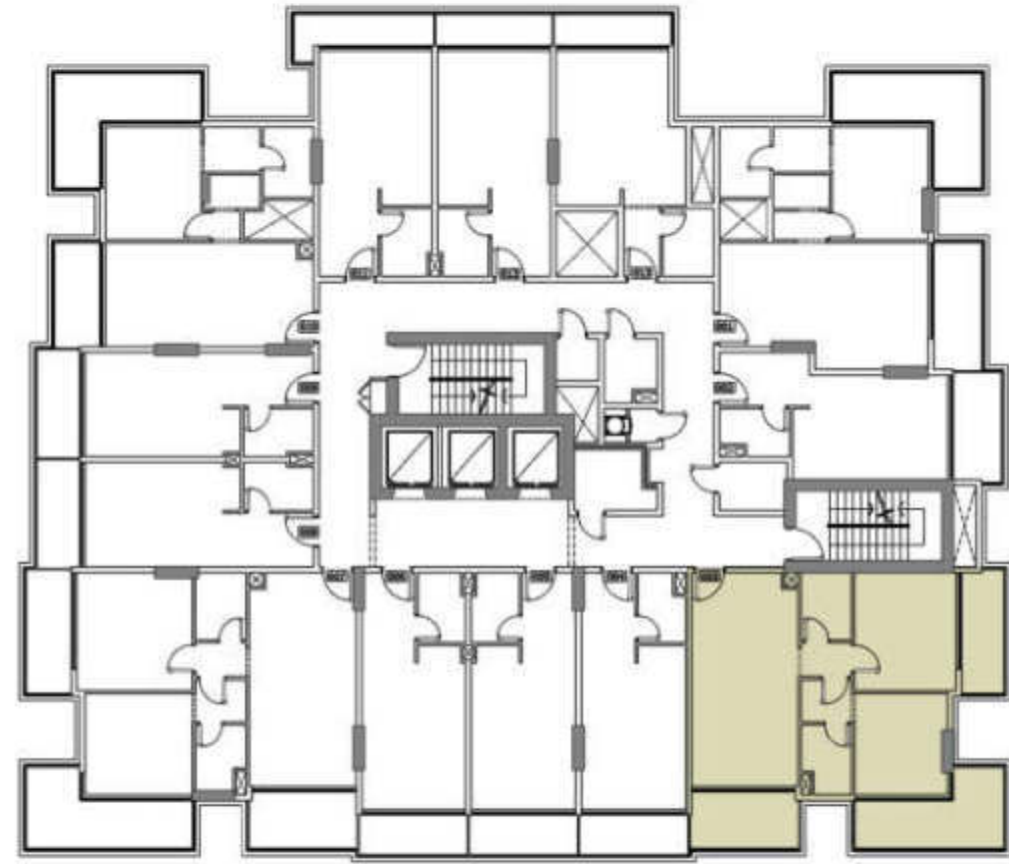
UNIT AREA	356 Sq. ft.
TERR/BAL AREA	64 Sq. ft.
TOTAL AREA	420 Sq. ft.
UNITS	304,504,704,904 & 1104

Disclaimer: all pictures, plans, layouts, information, data and details included in this brochure are indicative only and may change at any time up to the final 'as built' status in accordance with the final designs of the project, regulatory approvals and planning permissions.





# ARLINGTON PARK



## TYPICAL (3,5,7,9 & 11 ) FLOOR 2 BEDROOM APARTMENTS

UNIT AREA 809 Sq. ft.

TERR/BAL AREA 295 Sq. ft.

TOTAL AREA 1104 Sq. ft.

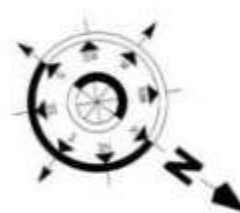
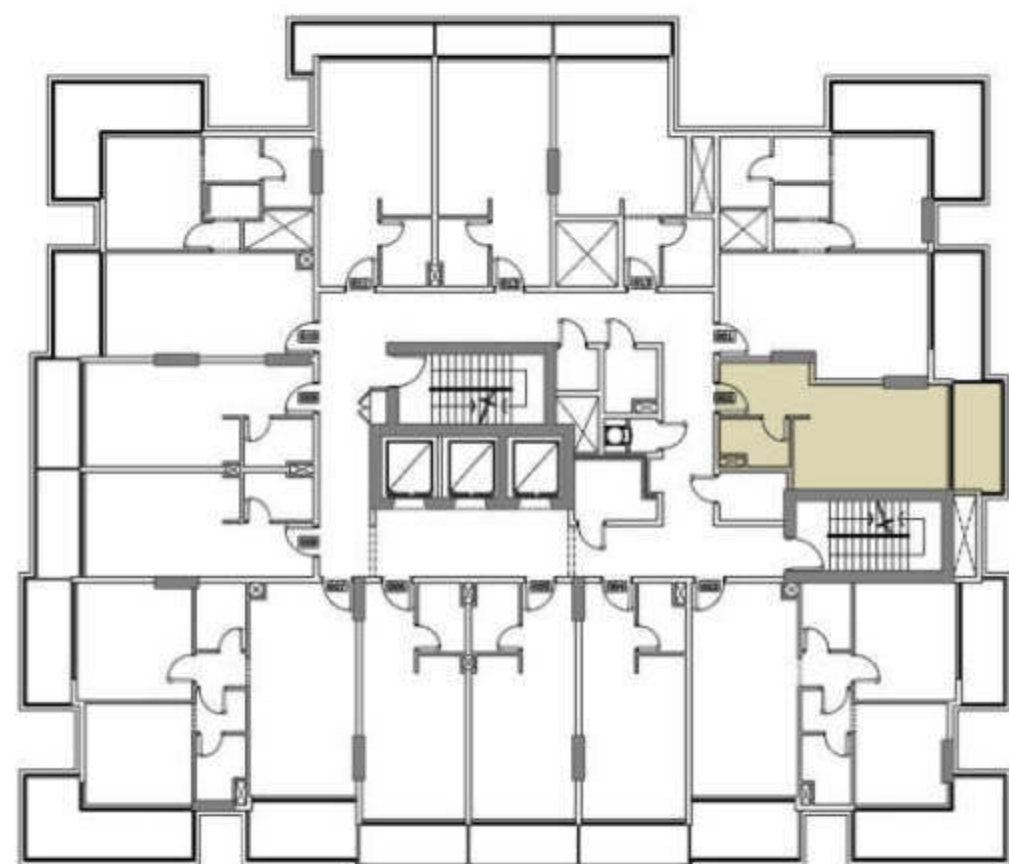
UNITS 303,503,703,903 & 1103



Disclaimer: all pictures, plans, layouts, information, data and details included in this brochure are indicative only and may change at any time up to the final 'as built' status in accordance with the final designs of the project, regulatory approvals and planning permissions.



# ARLINGTON PARK



## TYPICAL (3,5,7,9 & 11 ) FLOOR STUDIO APARTMENTS

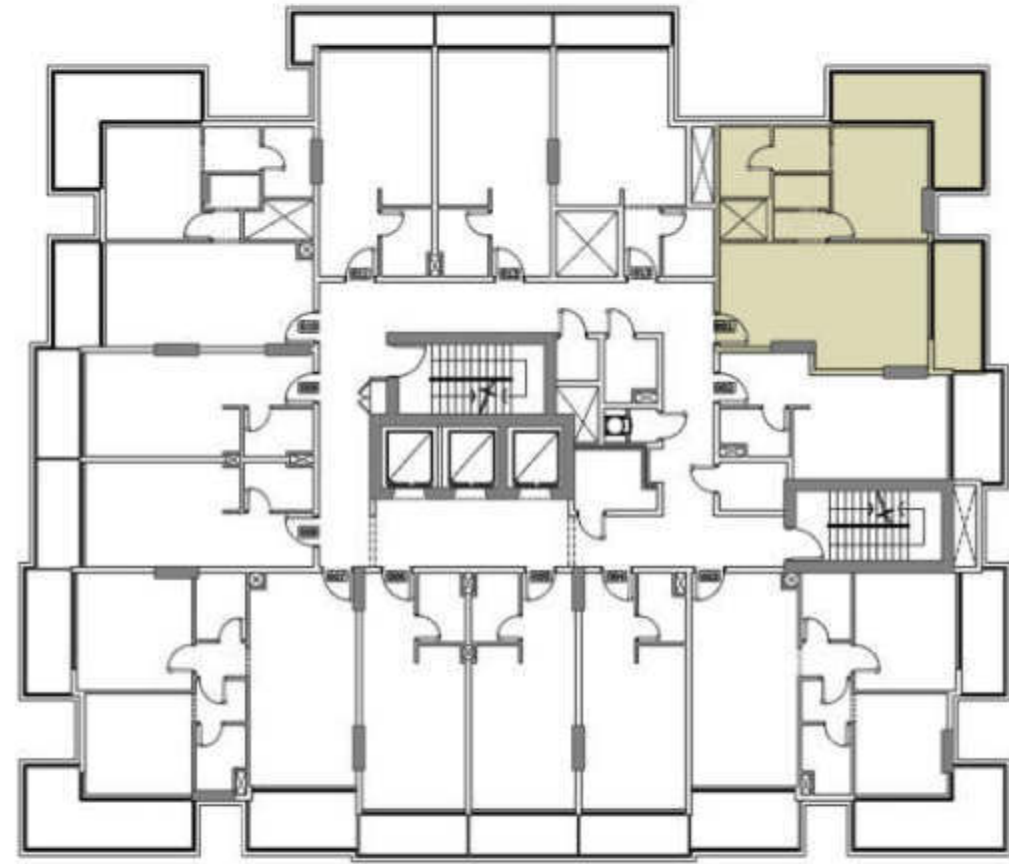
UNIT AREA	356 Sq. ft.
TERR/BAL AREA	77 Sq. ft.
TOTAL AREA	433 Sq. ft.
UNITS	302,502,702,902 & 1102

Disclaimer: all pictures, plans, layouts, information, data and details included in this brochure are indicative only and may change at any time up to the final 'as built' status in accordance with the final designs of the project, regulatory approvals and planning permissions.





# ARLINGTON PARK



## TYPICAL (3,5,7,9 & 11 ) FLOOR 1 BEDROOM APARTMENTS

UNIT AREA 660 Sq. ft.

TERR/BAL AREA 241 Sq. ft.

TOTAL AREA 901 Sq. ft.

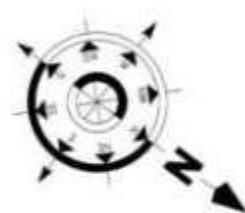
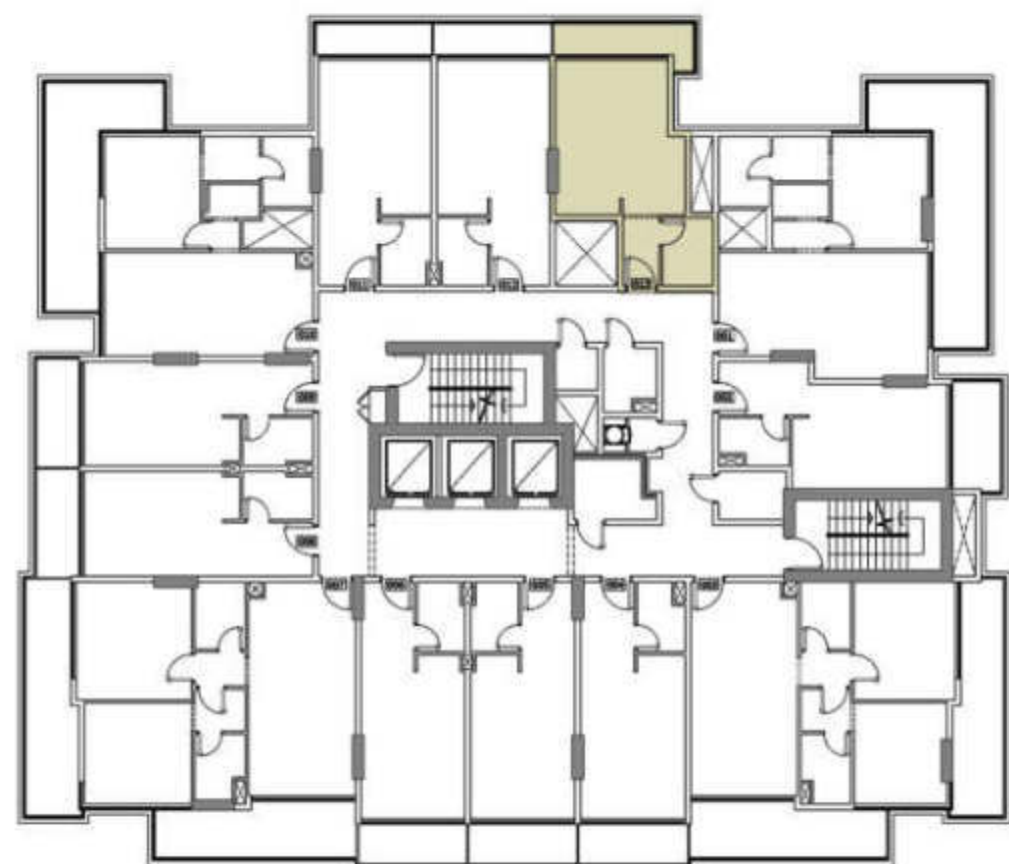
UNITS 301,501,701,901 & 1101

Disclaimer: all pictures, plans, layouts, information, data and details included in this brochure are indicative only and may change at any time up to the final 'as built' status in accordance with the final designs of the project, regulatory approvals and planning permissions.





# ARLINGTON PARK



## TYPICAL (2,4,6,8 & 10 ) FLOOR STUDIO APARTMENTS

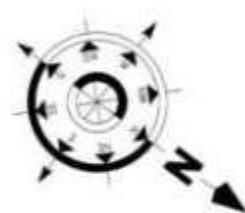
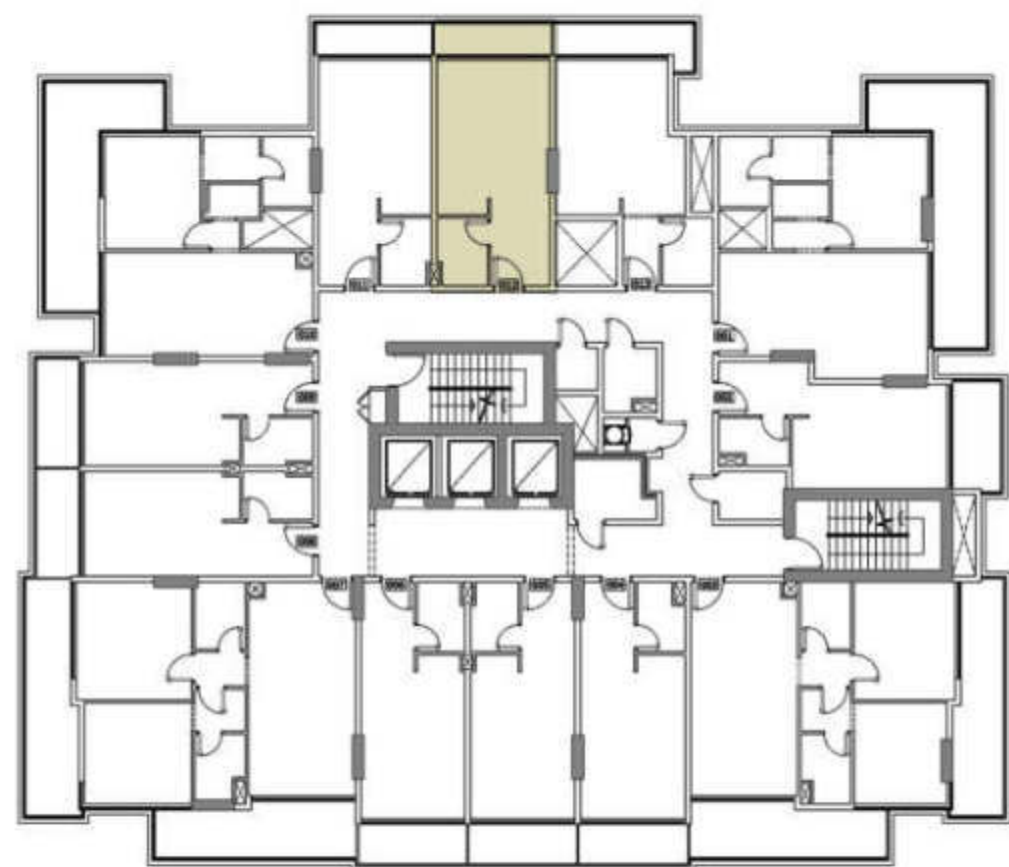
UNIT AREA	370 Sq. ft.
TERR/BAL AREA	71 Sq. ft.
TOTAL AREA	441 Sq. ft.
UNITS	213,413,613,813 & 1013

Disclaimer: all pictures, plans, layouts, information, data and details included in this brochure are indicative only and may change at any time up to the final 'as built' status in accordance with the final designs of the project, regulatory approvals and planning permissions.





# ARLINGTON PARK



## TYPICAL (2,4,6,8 & 10 ) FLOOR STUDIO APARTMENTS

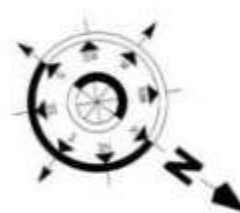
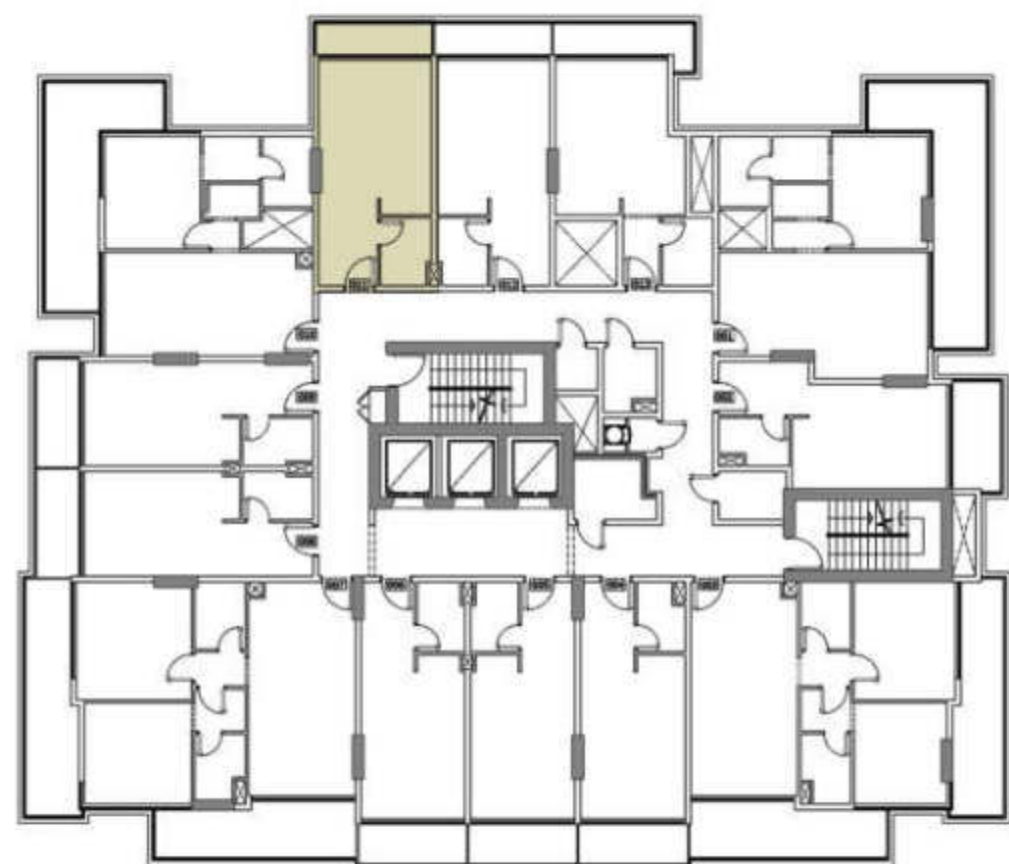
UNIT AREA	369 Sq. ft.
TERR/BAL AREA	56 Sq. ft.
TOTAL AREA	425 Sq. ft.
UNITS	212,412,612,812 & 1012

Disclaimer: all pictures, plans, layouts, information, data and details included in this brochure are indicative only and may change at any time up to the final 'as built' status in accordance with the final designs of the project, regulatory approvals and planning permissions.





# ARLINGTON PARK



## TYPICAL (2,4,6,8 & 10 ) FLOOR STUDIO APARTMENTS

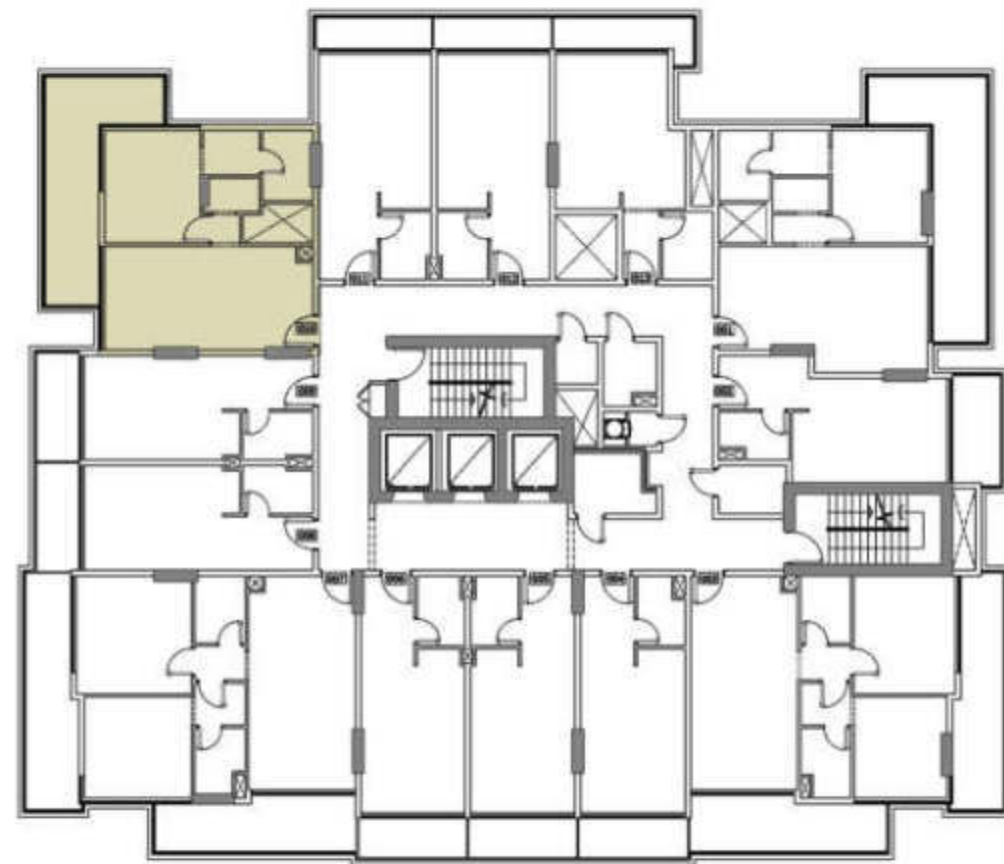
UNIT AREA	369 Sq. ft.
TERR/BAL AREA	55 Sq. ft.
TOTAL AREA	424 Sq. ft.
UNITS	211,411,611,811 & 1011

Disclaimer: all pictures, plans, layouts, information, data and details included in this brochure are indicative only and may change at any time up to the final 'as built' status in accordance with the final designs of the project, regulatory approvals and planning permissions.





# ARLINGTON PARK



## TYPICAL (2,4,6,8 & 10 ) FLOOR 1 BEDROOM APARTMENTS

UNIT AREA 610 Sq. ft.

TERR/BAL AREA 221 Sq. ft.

TOTAL AREA 831 Sq. ft.

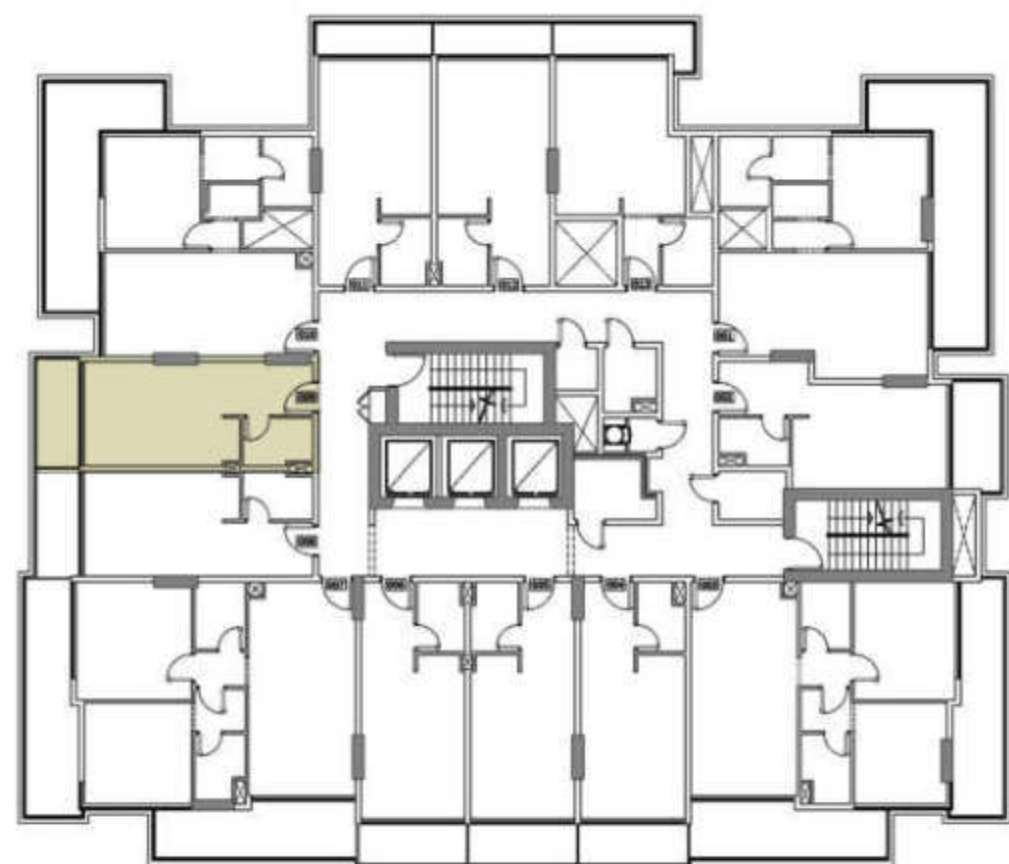
UNITS 210,410,610,810 & 1010

Disclaimer: all pictures, plans, layouts, information, data and details included in this brochure are indicative only and may change at any time up to the final 'as built' status in accordance with the final designs of the project, regulatory approvals and planning permissions.





# ARLINGTON PARK



## TYPICAL (2,4,6,8 & 10 ) FLOOR STUDIO APARTMENTS

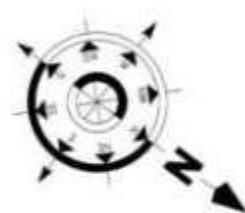
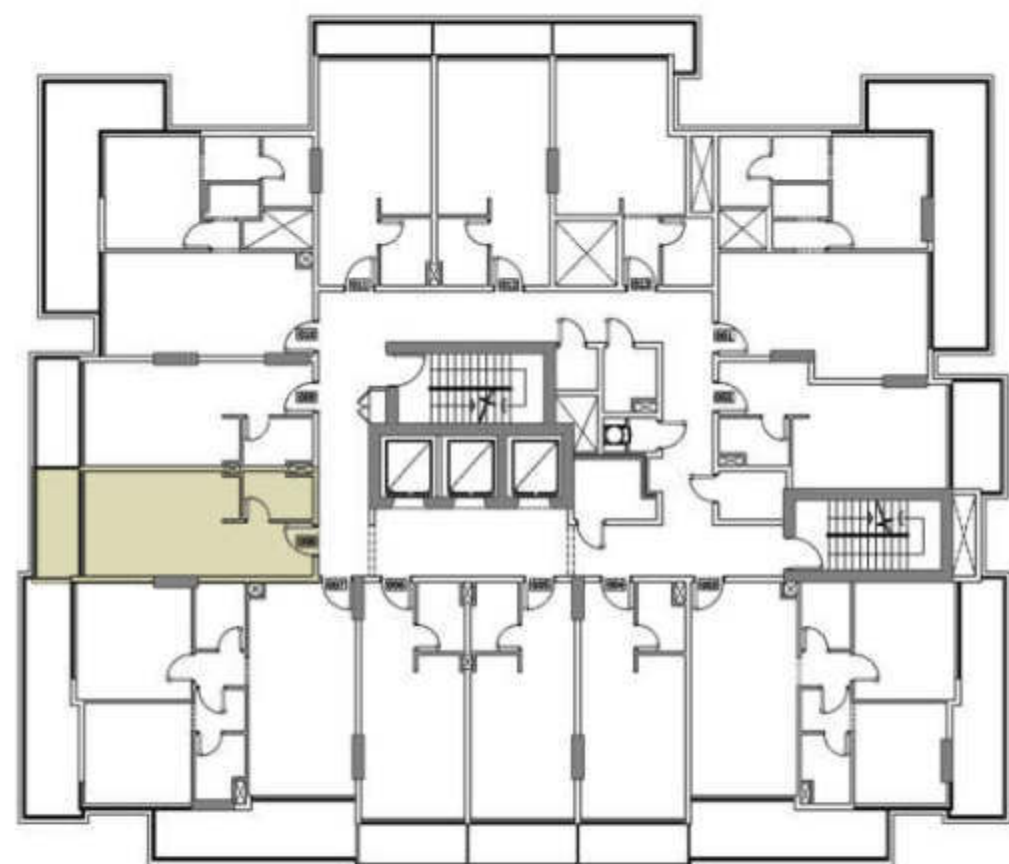


UNIT AREA	345 Sq. ft.
TERR/BAL AREA	68 Sq. ft.
TOTAL AREA	413 Sq. ft.
UNITS	209,409,609,809 & 1009

Disclaimer: all pictures, plans, layouts, information, data and details included in this brochure are indicative only and may change at any time up to the final 'as built' status in accordance with the final designs of the project, regulatory approvals and planning permissions.



# ARLINGTON PARK



## TYPICAL (2,4,6,8 & 10 ) FLOOR STUDIO APARTMENTS

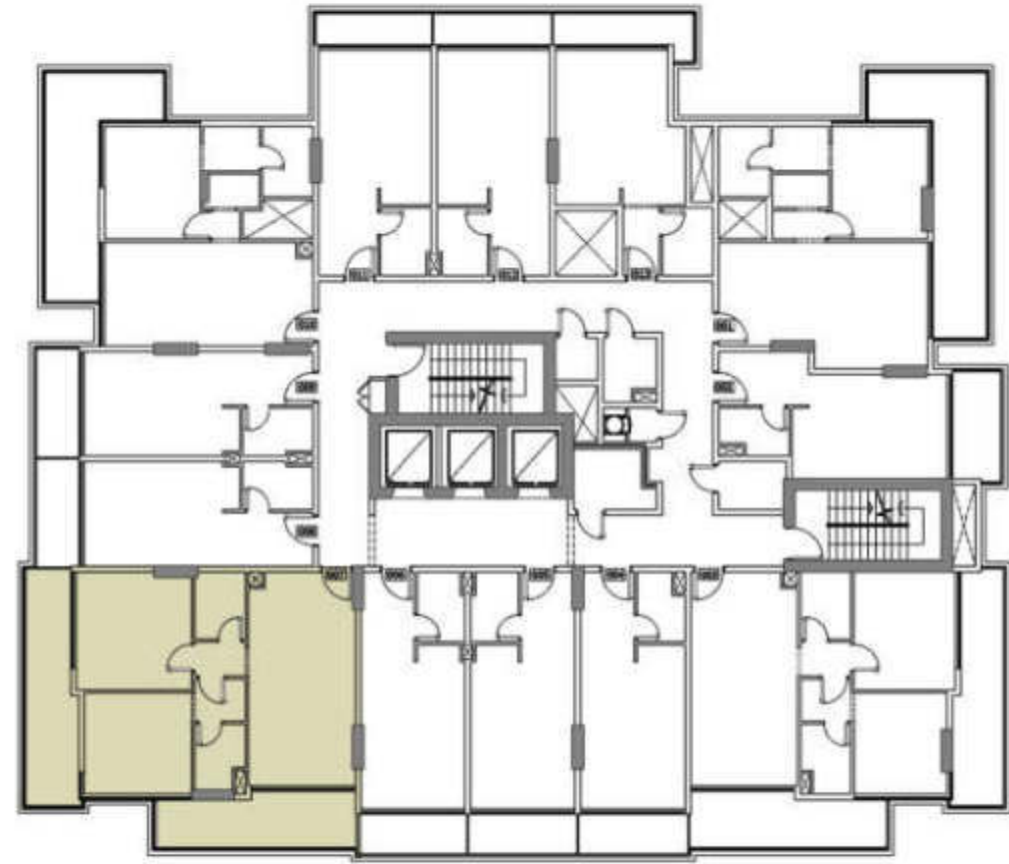
UNIT AREA	345 Sq. ft.
TERR/BAL AREA	68 Sq. ft.
TOTAL AREA	413 Sq. ft.
UNITS	208,408,608,808 & 1008

Disclaimer: all pictures, plans, layouts, information, data and details included in this brochure are indicative only and may change at any time up to the final 'as built' status in accordance with the final designs of the project, regulatory approvals and planning permissions.





# ARLINGTON PARK



## TYPICAL (2,4,6,8 & 10 ) FLOOR 2 BEDROOM APARTMENTS

UNIT AREA 847 Sq. ft.

TERR/BAL AREA 325 Sq. ft.

TOTAL AREA 1172 Sq. ft.

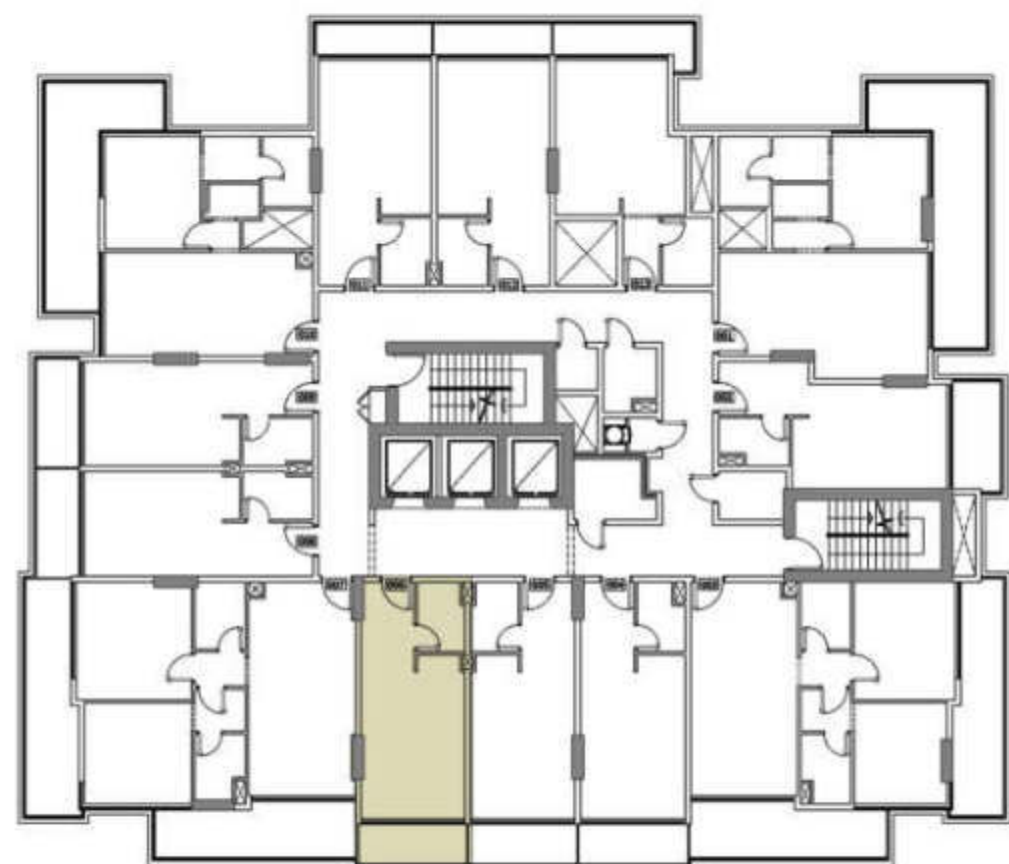
UNITS 207,407,607,807 & 1007

Disclaimer: all pictures, plans, layouts, information, data and details included in this brochure are indicative only and may change at any time up to the final 'as built' status in accordance with the final designs of the project, regulatory approvals and planning permissions.





# ARLINGTON PARK



## TYPICAL (2,4,6,8 & 10 ) FLOOR STUDIO APARTMENTS

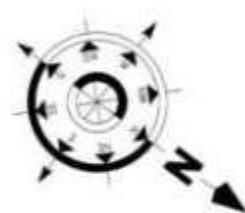
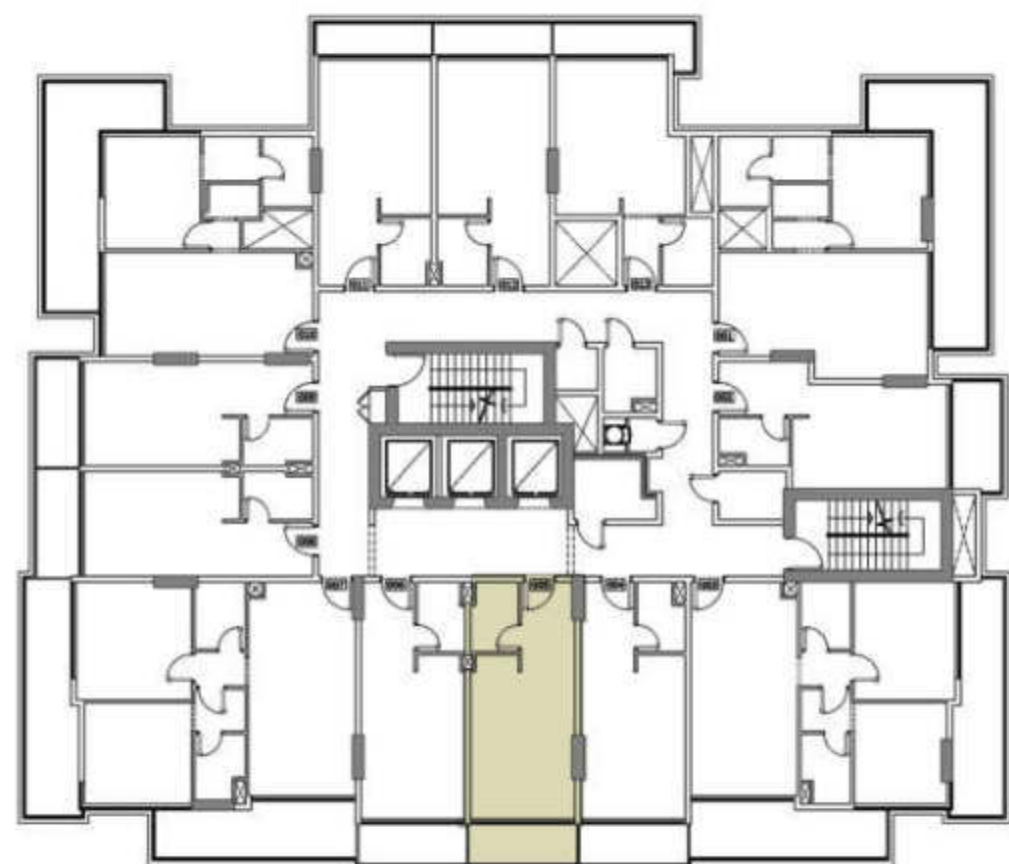
UNIT AREA	357 Sq. ft.
TERR/BAL AREA	64 Sq. ft.
TOTAL AREA	421 Sq. ft.
UNITS	206,406,606,806 & 1006

Disclaimer: all pictures, plans, layouts, information, data and details included in this brochure are indicative only and may change at any time up to the final 'as built' status in accordance with the final designs of the project, regulatory approvals and planning permissions.





# ARLINGTON PARK



## TYPICAL (2,4,6,8 & 10 ) FLOOR STUDIO APARTMENTS

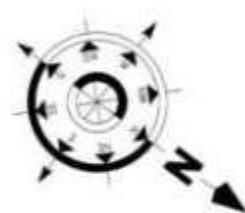
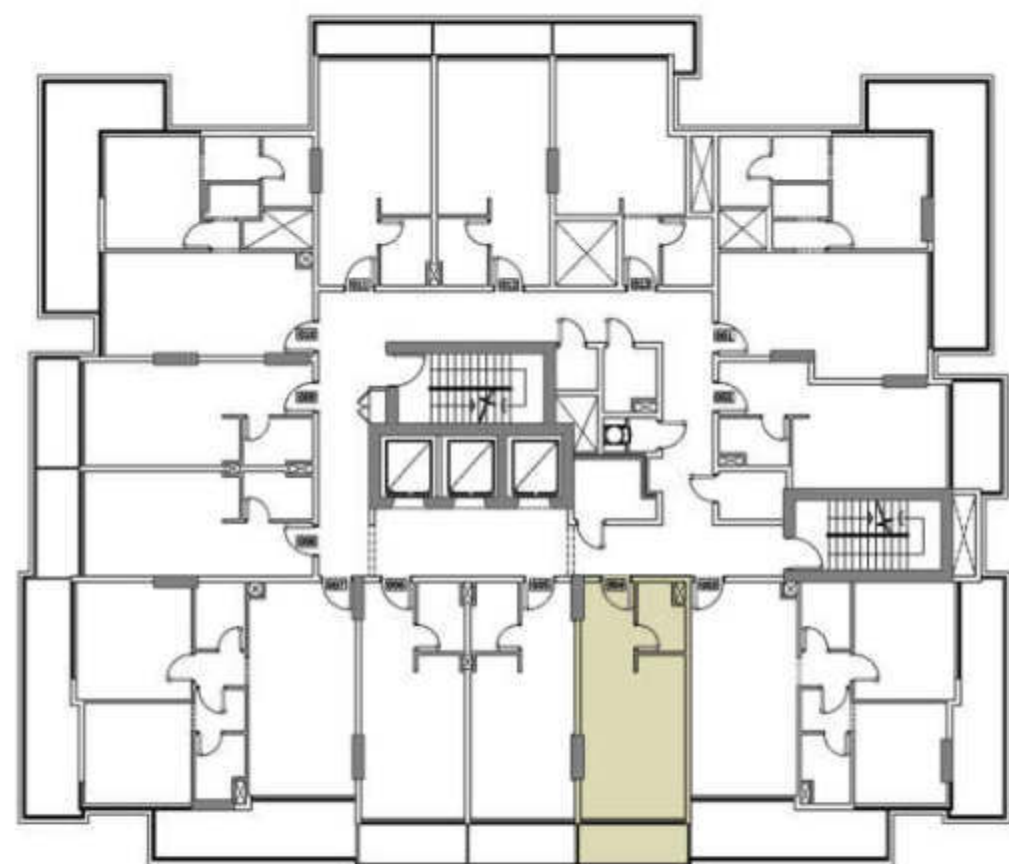
UNIT AREA	357 Sq. ft.
TERR/BAL AREA	64 Sq. ft.
TOTAL AREA	421 Sq. ft.
UNITS	205,405,605,805 & 1005

Disclaimer: all pictures, plans, layouts, information, data and details included in this brochure are indicative only and may change at any time up to the final 'as built' status in accordance with the final designs of the project, regulatory approvals and planning permissions.





# ARLINGTON PARK



## TYPICAL (2,4,6,8 & 10 ) FLOOR STUDIO APARTMENTS

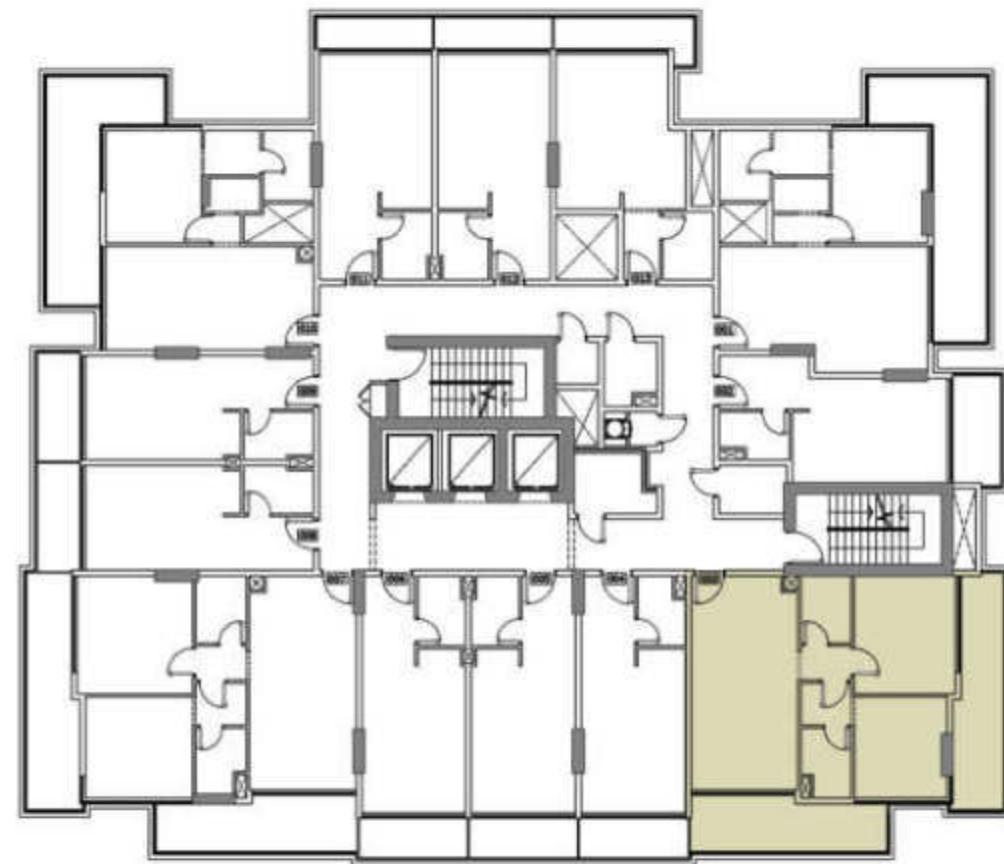
UNIT AREA	356 Sq. ft.
TERR/BAL AREA	64 Sq. ft.
TOTAL AREA	420 Sq. ft.
UNITS	204,404,604,804 & 1004

Disclaimer: all pictures, plans, layouts, information, data and details included in this brochure are indicative only and may change at any time up to the final 'as built' status in accordance with the final designs of the project, regulatory approvals and planning permissions.





# ARLINGTON PARK



## TYPICAL (2,4,6,8 & 10 ) FLOOR 2 BEDROOM APARTMENTS

UNIT AREA 809 Sq. ft.

TERR/BAL AREA 312 Sq. ft.

TOTAL AREA 1121 Sq. ft.

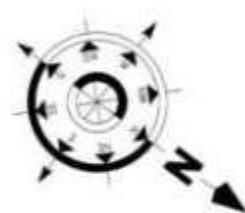
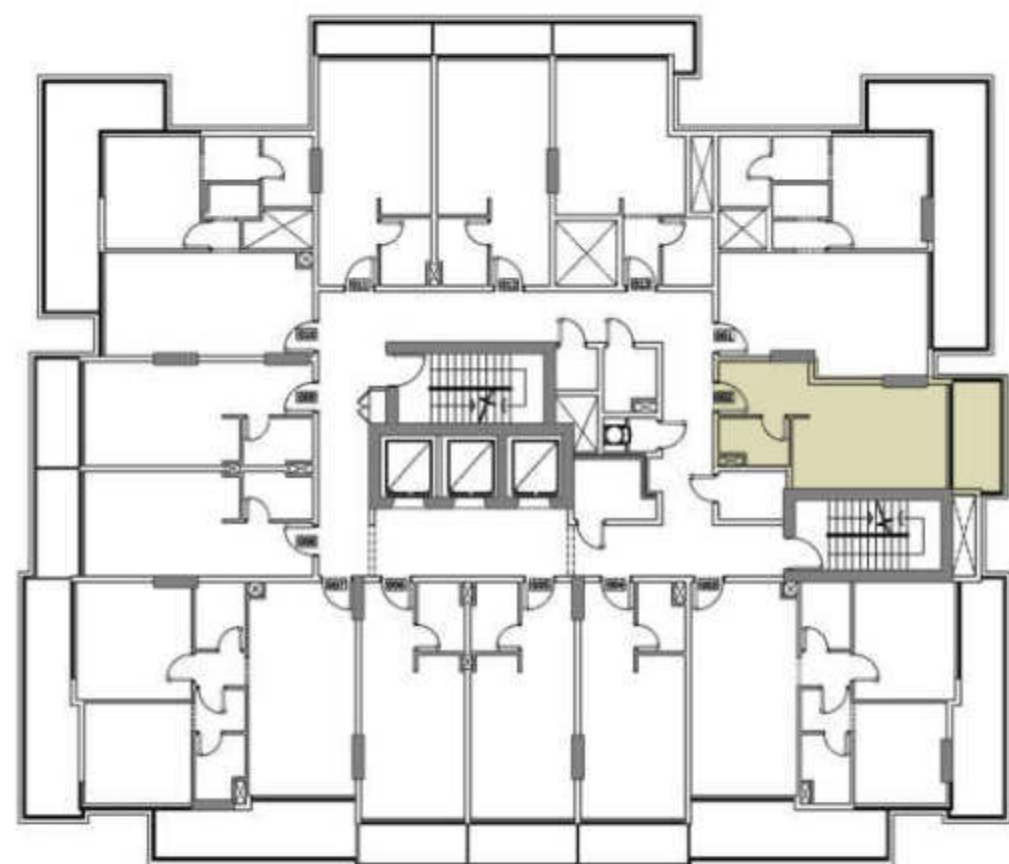
UNITS 203,403,603,803 & 1003

Disclaimer: all pictures, plans, layouts, information, data and details included in this brochure are indicative only and may change at any time up to the final 'as built' status in accordance with the final designs of the project, regulatory approvals and planning permissions.





# ARLINGTON PARK



## TYPICAL (2,4,6,8 & 10 ) FLOOR STUDIO APARTMENTS

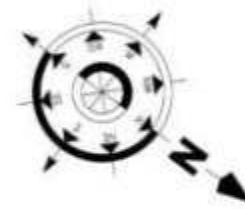
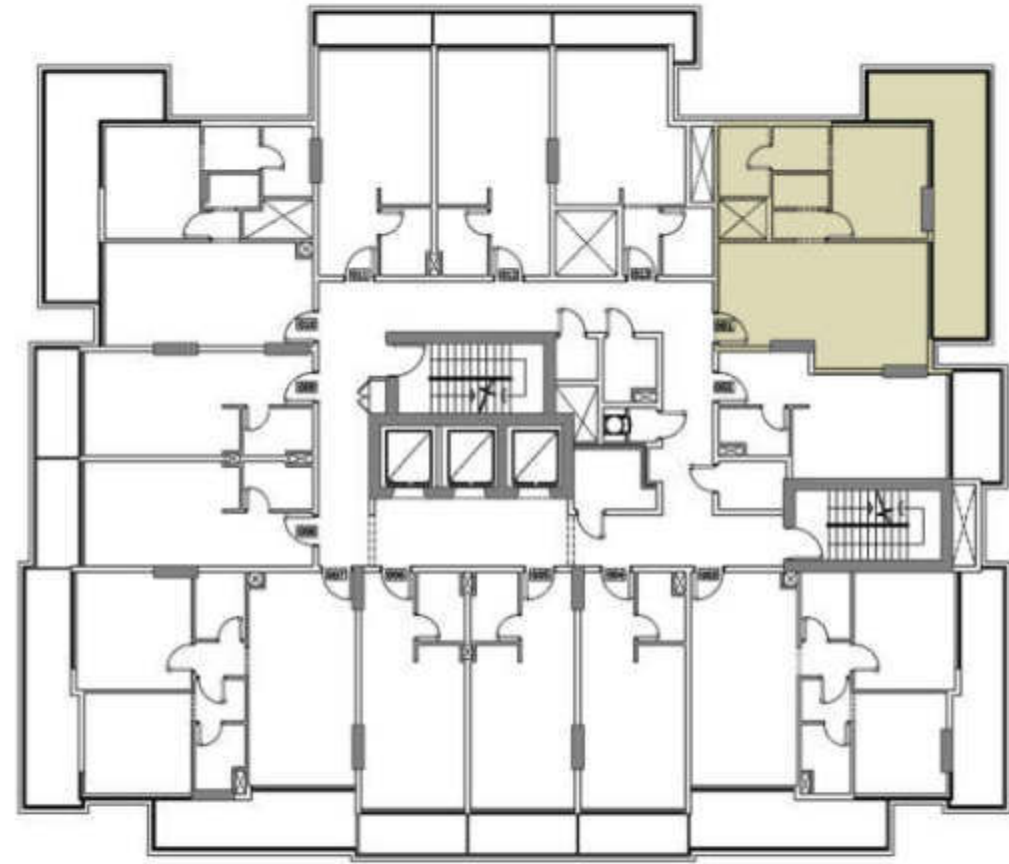
UNIT AREA	356 Sq. ft.
TERR/BAL AREA	77 Sq. ft.
TOTAL AREA	433 Sq. ft.
UNITS	202,402,602,802 & 1002

Disclaimer: all pictures, plans, layouts, information, data and details included in this brochure are indicative only and may change at any time up to the final 'as built' status in accordance with the final designs of the project, regulatory approvals and planning permissions.





# ARLINGTON PARK



## TYPICAL (2,4,6,8 & 10 ) FLOOR 1 BEDROOM APARTMENTS

UNIT AREA 660 Sq. ft.

TERR/BAL AREA 250 Sq. ft.

TOTAL AREA 910 Sq. ft.

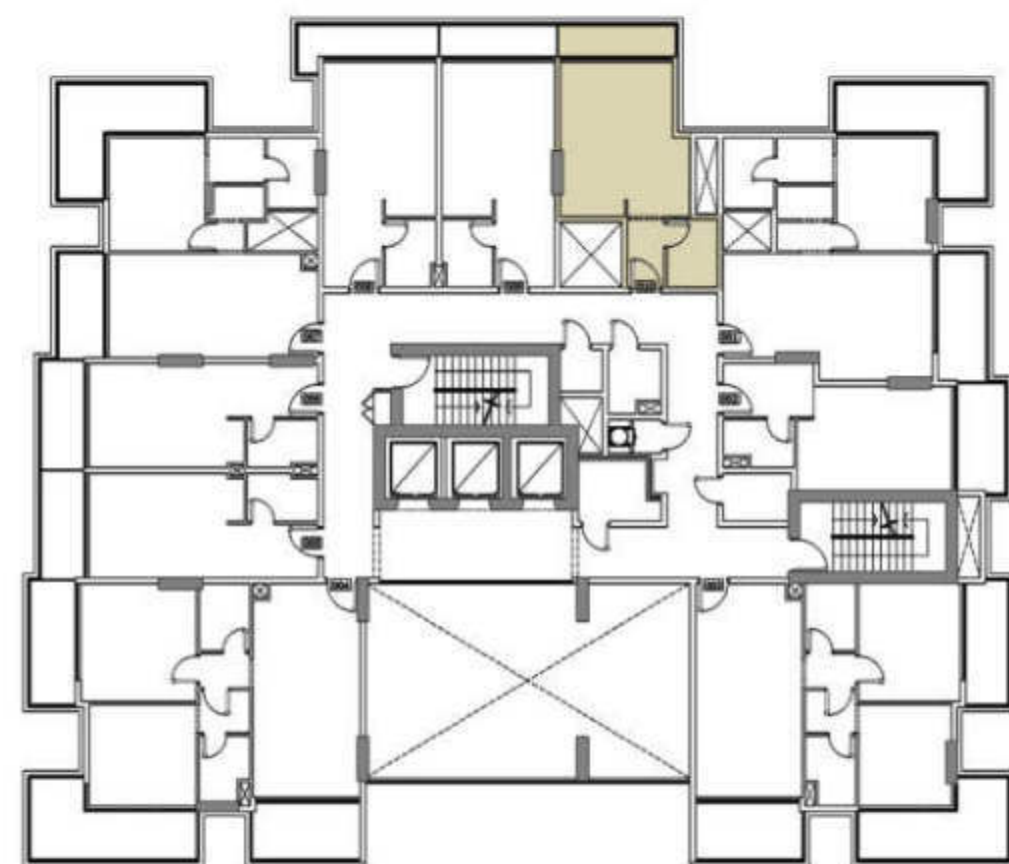
UNITS 201,401,601,801 & 1001



Disclaimer: all pictures, plans, layouts, information, data and details included in this brochure are indicative only and may change at any time up to the final 'as built' status in accordance with the final designs of the project, regulatory approvals and planning permissions.



# ARLINGTON PARK



## 1st FLOOR STUDIO APARTMENT

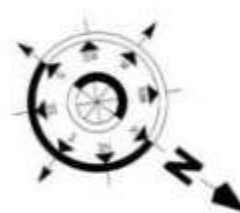
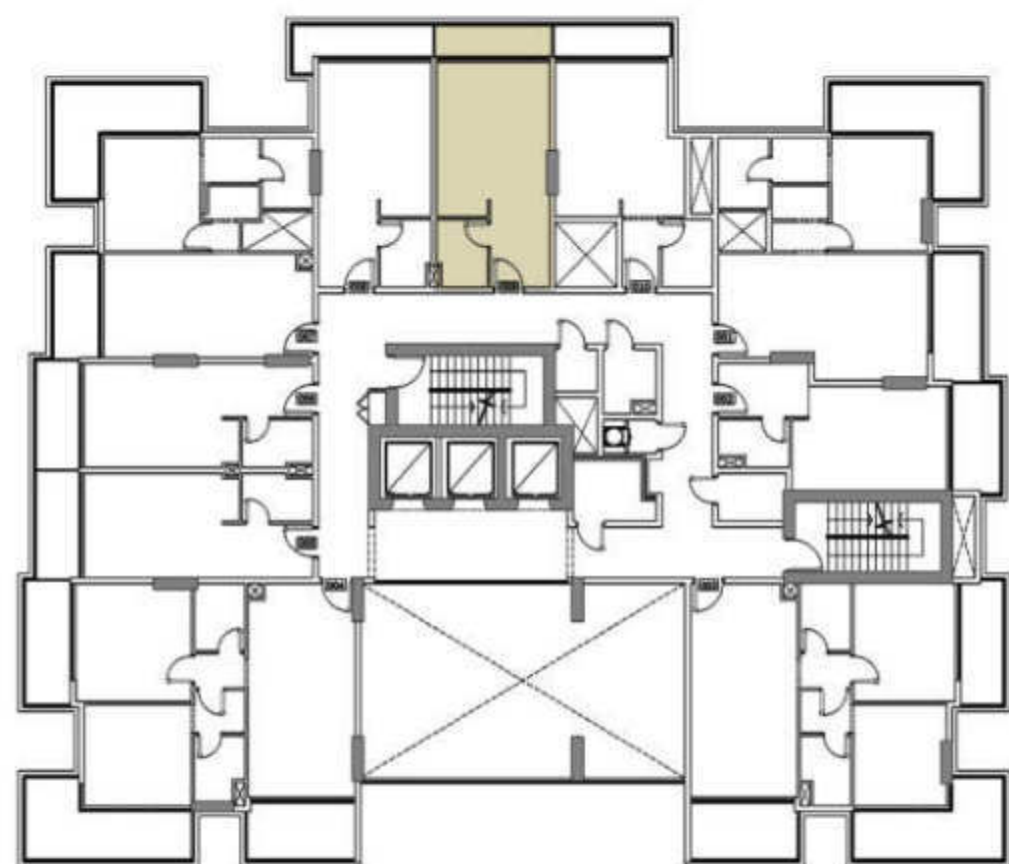
UNIT AREA	370 Sq. ft.
TERR/BAL AREA	56 Sq. ft.
TOTAL AREA	426 Sq. ft.
UNITS	110

Disclaimer: all pictures, plans, layouts, information, data and details included in this brochure are indicative only and may change at any time up to the final 'as built' status in accordance with the final designs of the project, regulatory approvals and planning permissions.





# ARLINGTON PARK



## 1st FLOOR STUDIO APARTMENT

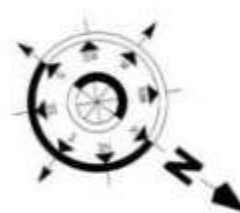
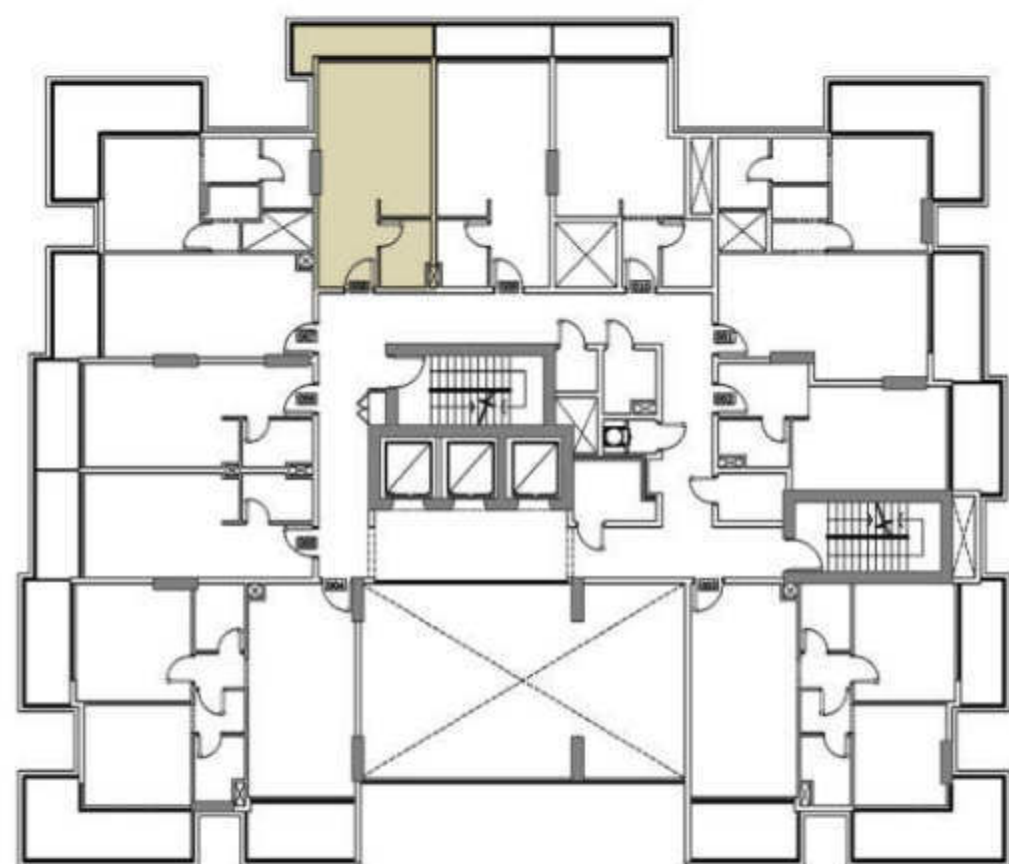
UNIT AREA	369 Sq. ft.
TERR/BAL AREA	55 Sq. ft.
TOTAL AREA	424 Sq. ft.
UNITS	109

Disclaimer: all pictures, plans, layouts, information, data and details included in this brochure are indicative only and may change at any time up to the final 'as built' status in accordance with the final designs of the project, regulatory approvals and planning permissions.





# ARLINGTON PARK



## 1st FLOOR STUDIO APARTMENT

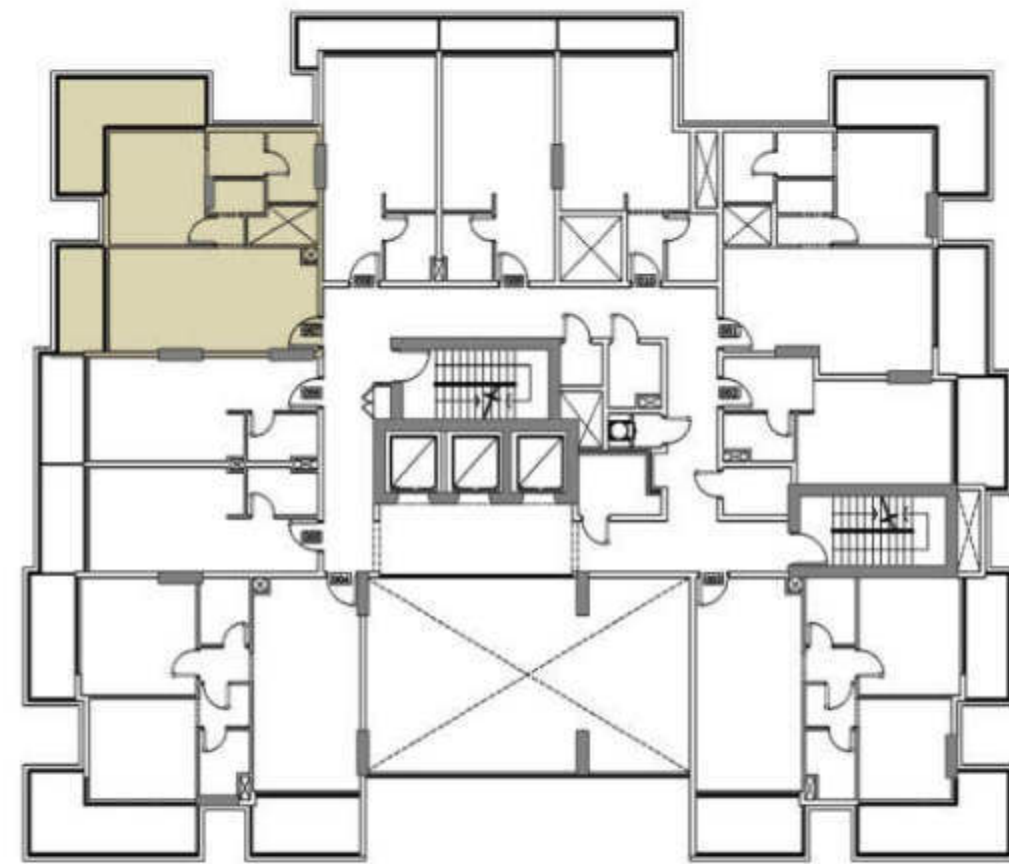
UNIT AREA	369 Sq. ft.
TERR/BAL AREA	71 Sq. ft.
TOTAL AREA	440 Sq. ft.
UNITS	108

Disclaimer: all pictures, plans, layouts, information, data and details included in this brochure are indicative only and may change at any time up to the final 'as built' status in accordance with the final designs of the project, regulatory approvals and planning permissions.





# ARLINGTON PARK



## 1st FLOOR 1 BEDROOM APARTMENT

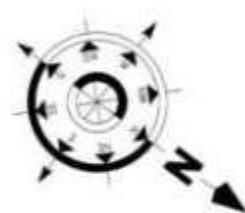
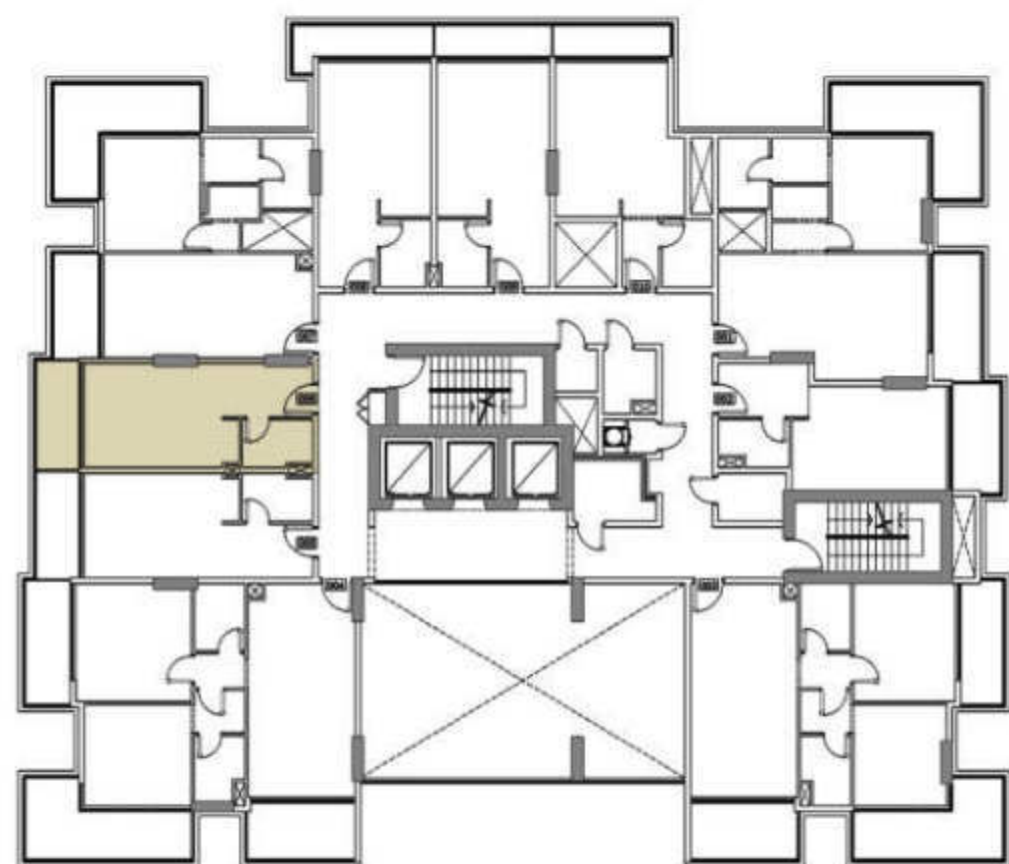
UNIT AREA	610 Sq. ft.
TERR/BAL AREA	216 Sq. ft.
TOTAL AREA	826 Sq. ft.
UNITS	107

Disclaimer: all pictures, plans, layouts, information, data and details included in this brochure are indicative only and may change at any time up to the final 'as built' status in accordance with the final designs of the project, regulatory approvals and planning permissions.





# ARLINGTON PARK



## 1st FLOOR STUDIO APARTMENT

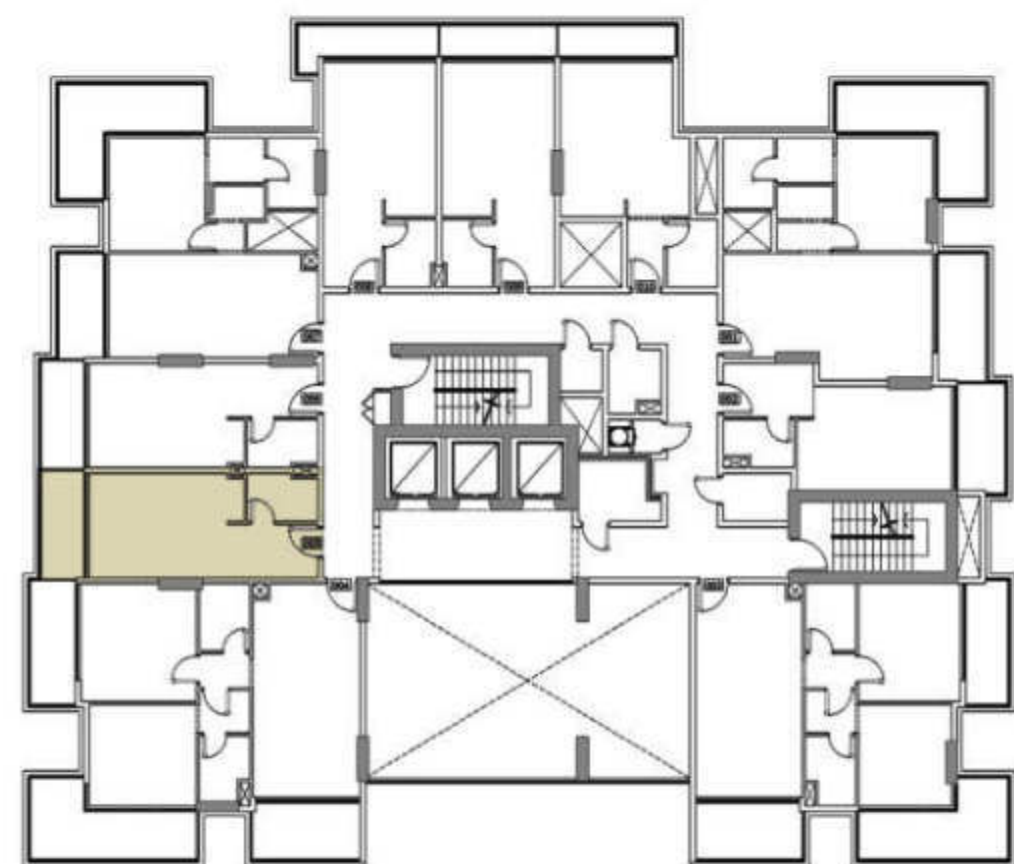


UNIT AREA	345 Sq. ft.
TERR/BAL AREA	68 Sq. ft.
TOTAL AREA	413 Sq. ft.
UNITS	106

Disclaimer: all pictures, plans, layouts, information, data and details included in this brochure are indicative only and may change at any time up to the final 'as built' status in accordance with the final designs of the project, regulatory approvals and planning permissions.



# ARLINGTON PARK



## 1st FLOOR STUDIO APARTMENT

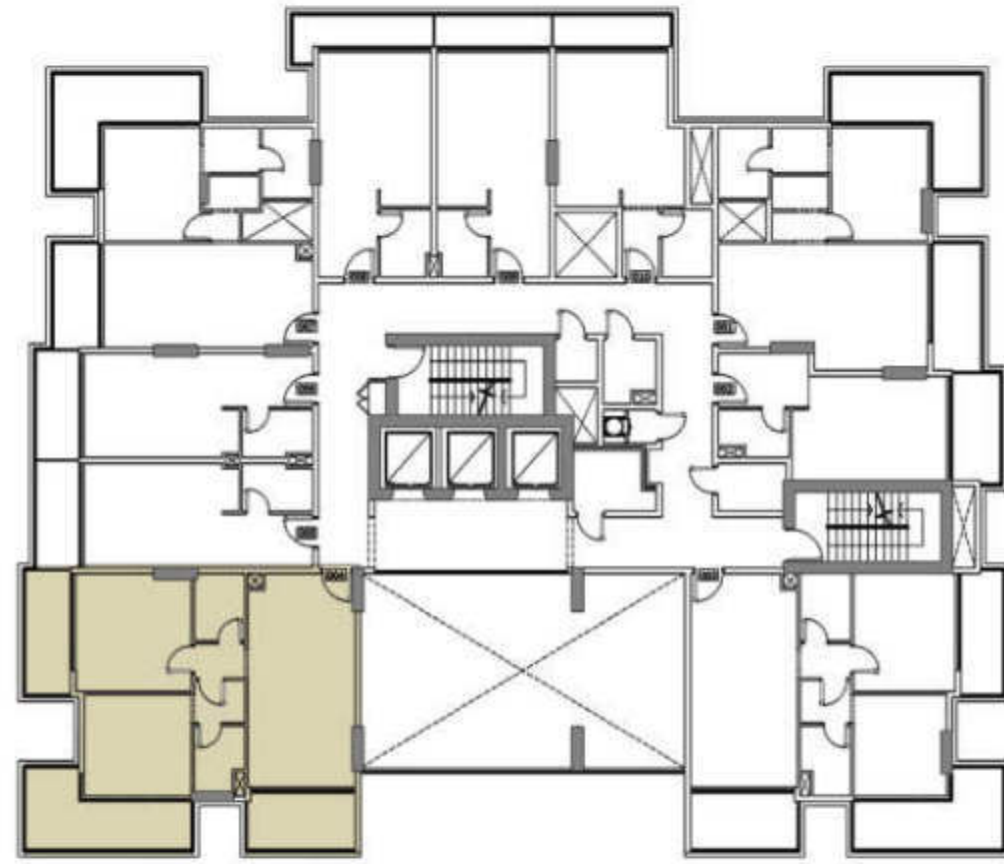


UNIT AREA	345 Sq. ft.
TERR/BAL AREA	68 Sq. ft.
TOTAL AREA	413 Sq. ft.
UNITS	105

Disclaimer: all pictures, plans, layouts, information, data and details included in this brochure are indicative only and may change at any time up to the final 'as built' status in accordance with the final designs of the project, regulatory approvals and planning permissions.



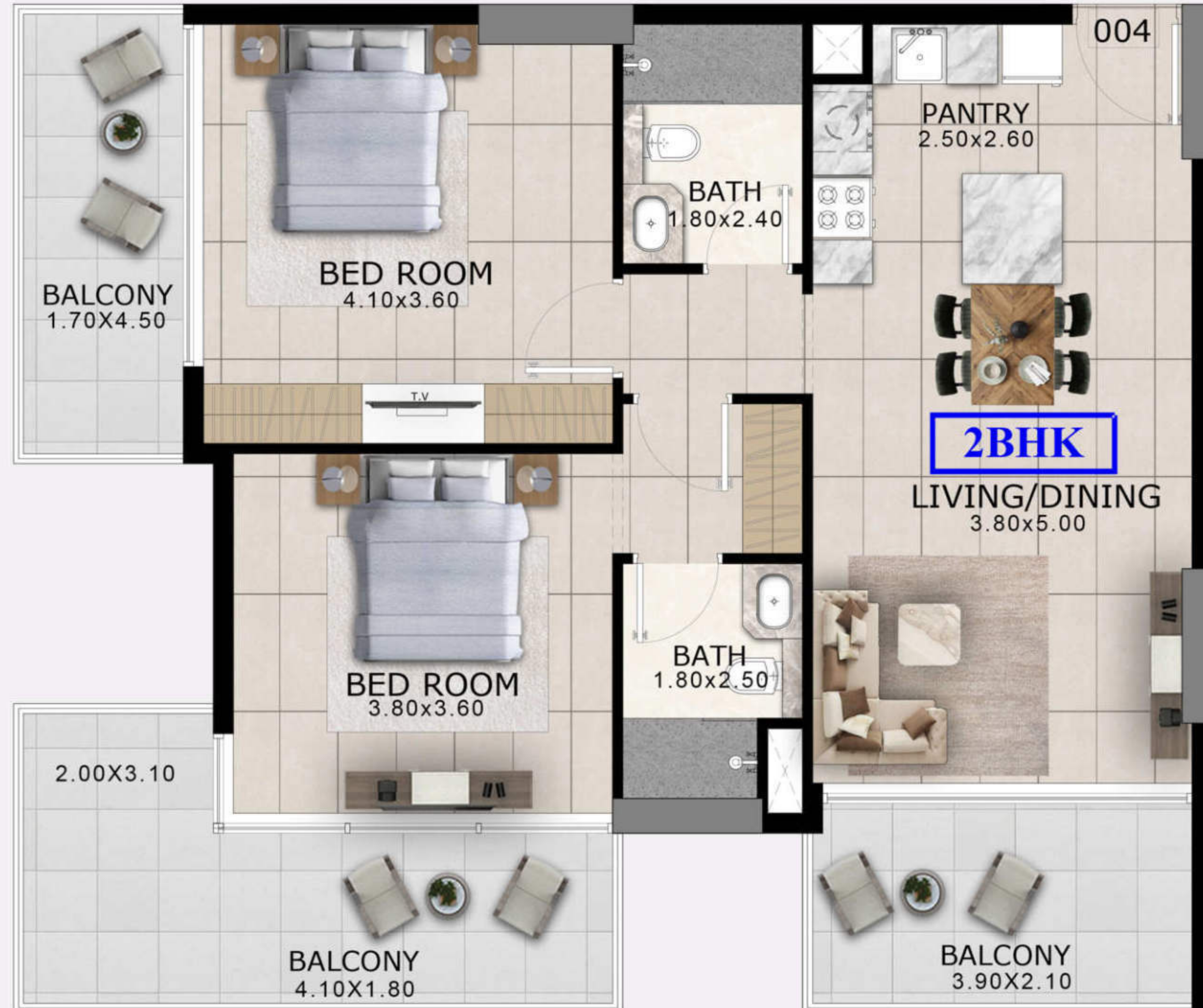
# ARLINGTON PARK



## 1st FLOOR 2 BEDROOM APARTMENT

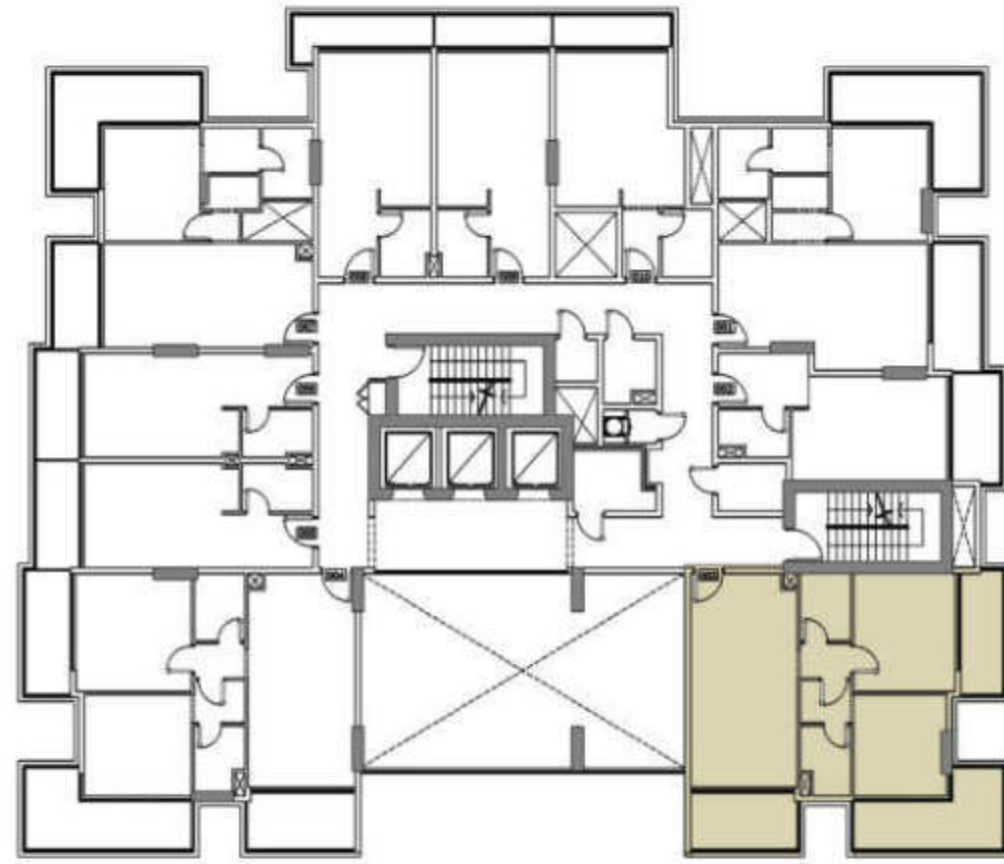
UNIT AREA	847 Sq. ft.
TERR/BAL AREA	314 Sq. ft.
TOTAL AREA	1161 Sq. ft.
UNITS	104

Disclaimer: all pictures, plans, layouts, information, data and details included in this brochure are indicative only and may change at any time up to the final 'as built' status in accordance with the final designs of the project, regulatory approvals and planning permissions.





# ARLINGTON PARK



## 1st FLOOR 2 BEDROOM APARTMENT

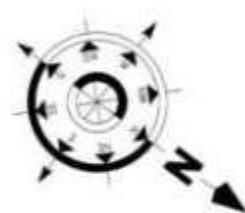
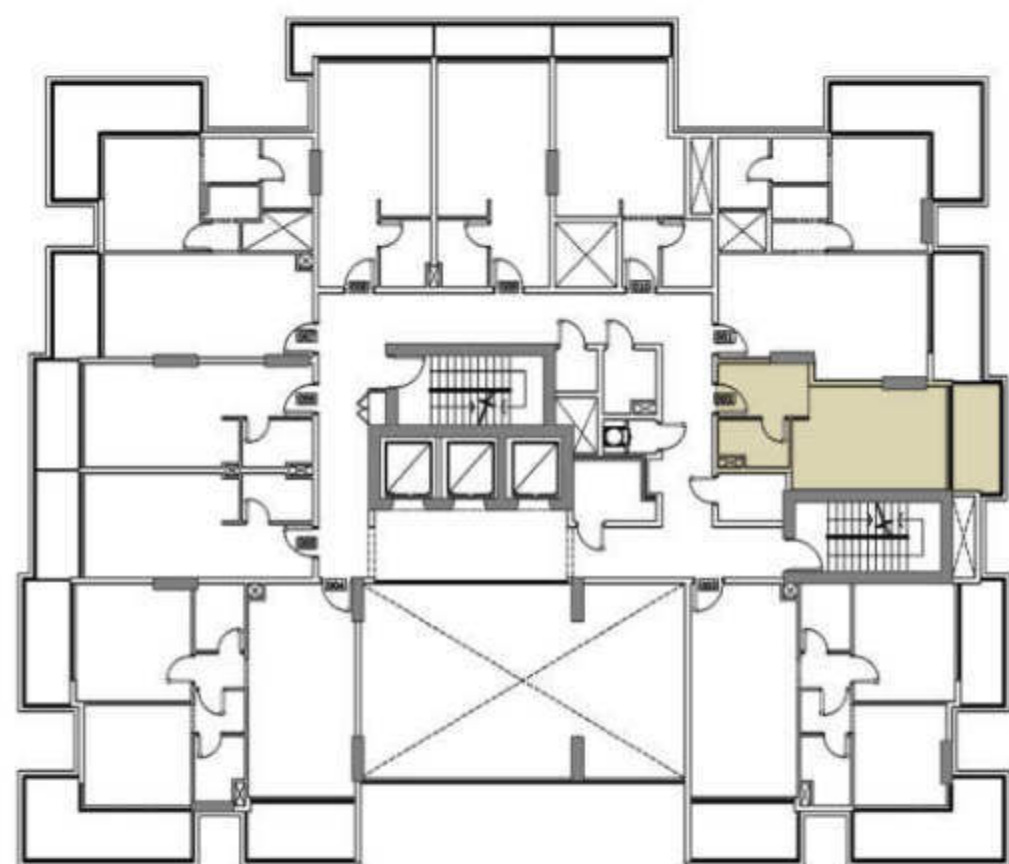
UNIT AREA	809 Sq. ft.
TERR/BAL AREA	296 Sq. ft.
TOTAL AREA	1105 Sq. ft.
UNITS	103

Disclaimer: all pictures, plans, layouts, information, data and details included in this brochure are indicative only and may change at any time up to the final 'as built' status in accordance with the final designs of the project, regulatory approvals and planning permissions.





# ARLINGTON PARK



## 1st FLOOR STUDIO APARTMENT

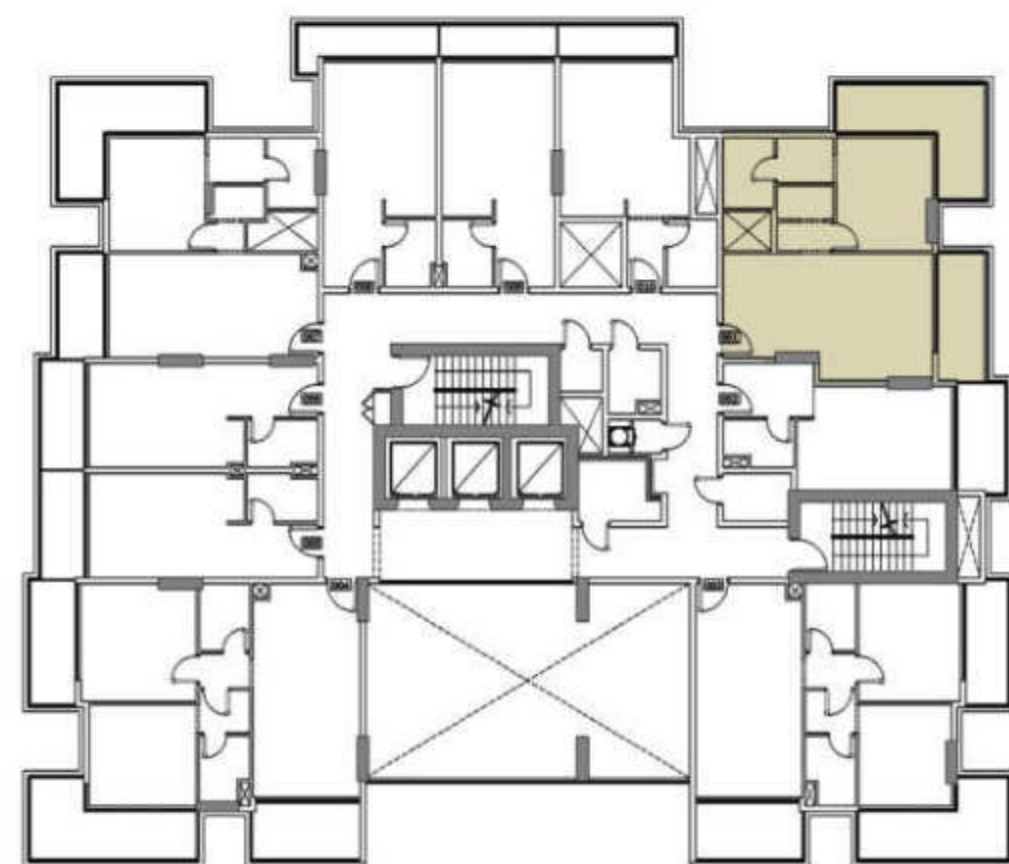


UNIT AREA	356 Sq. ft.
TERR/BAL AREA	77 Sq. ft.
TOTAL AREA	433 Sq. ft.
UNITS	102

Disclaimer: all pictures, plans, layouts, information, data and details included in this brochure are indicative only and may change at any time up to the final 'as built' status in accordance with the final designs of the project, regulatory approvals and planning permissions.



# ARLINGTON PARK



## 1st FLOOR 1 BEDROOM APARTMENT

UNIT AREA	660 Sq. ft.
TERR/BAL AREA	241 Sq. ft.
TOTAL AREA	901 Sq. ft.
UNITS	101

Disclaimer: all pictures, plans, layouts, information, data and details included in this brochure are indicative only and may change at any time up to the final 'as built' status in accordance with the final designs of the project, regulatory approvals and planning permissions.



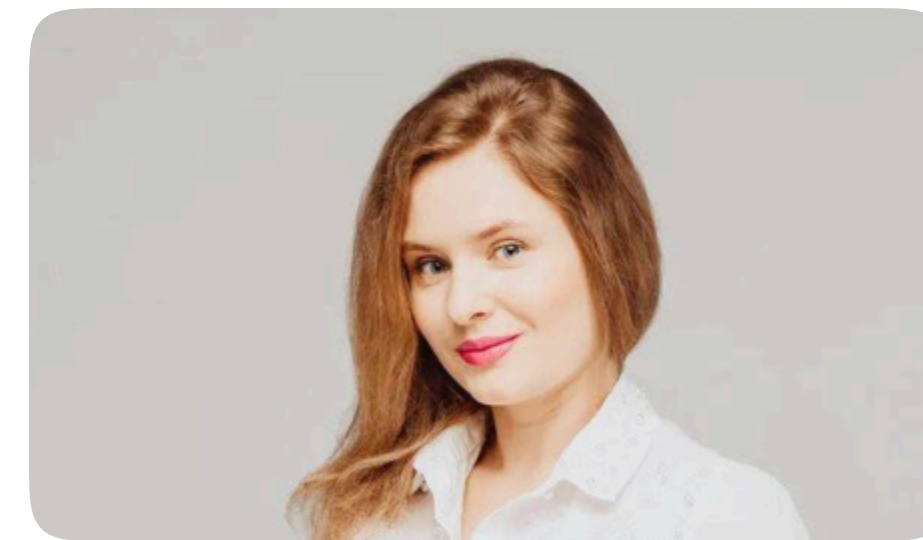




**housebook** Real Estate Company  
since 2012 in the UAE

**+971 (4) 412-5007**

Managers of partnerships



Alevtina Kapustina



Svetlana Guseva

## Office

Housebook Real Estate LCC

Marina Plaza, office 2502-01, Dubai, UAE

Company license: 1128098

[ae.housebook.deals](https://ae.housebook.deals)

[partner@housebook.ae](mailto:partner@housebook.ae)

