



MASHRIQ ELITE
DEVELOPMENTS

*floarea
Jasis*



floareá *Oasis*

About The Project:

Introducing **Floareá Oasis**, a striking testament to luxury living in the prestigious **Dubai Land Residence Complex**.

Rising majestically across **13 floors**, this distinguished development features **257 beautifully appointed residences**, including **studio, 1-bedroom, and 2-bedroom apartments**, making this project an ideal retreat for modern living.

Floareá Oasis redefines urban lifestyle, world-class amenities on two floors that promise an unparalleled lifestyle experience. Step into a world where luxury is reimagined and every moment is designed to leave a lasting impression.

Your Oasis of Premium Amenities



Sky Pool



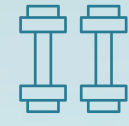
Kids Pool



Kids Play Area



Splash Pad



Outdoor Gym



Meditation Deck



Indoor Gym



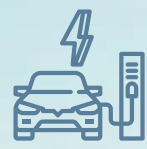
Roof Garden



Meeting
Lounge



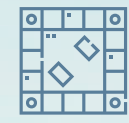
Barbeque
Corner



Ev Charging
Stations



Reading Corner



Board Games
Corner



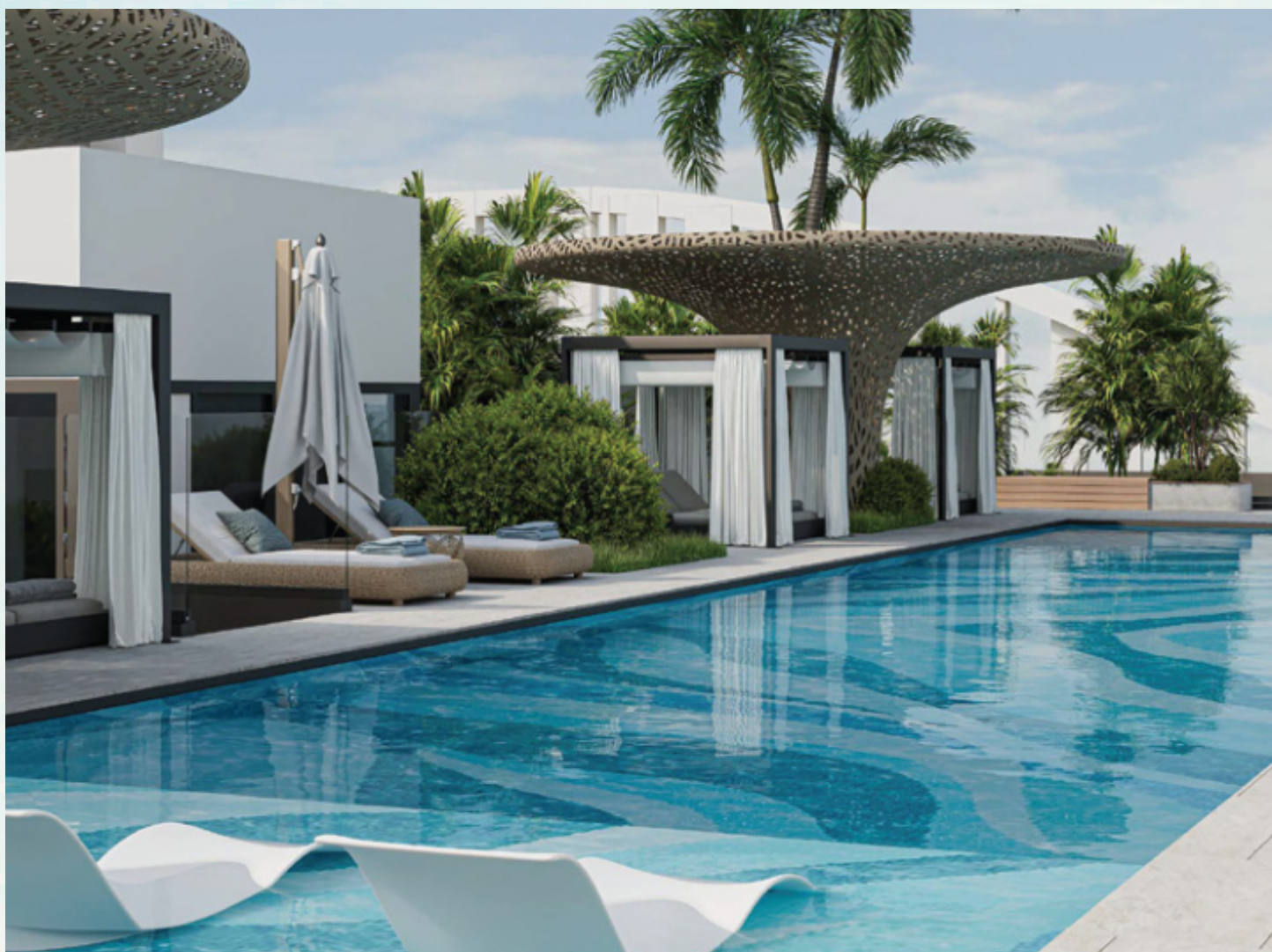
Outdoor
Table Tennis



Pool Side
Baja Shelves



Cosmic Sitting



The Key Features of Floarea Oasis

- **Strategic Location:** Perfectly positioned in Dubai Land, offering seamless connectivity to key landmarks and lifestyle destinations.
- **Convenient Access:** Four high-speed elevators ensure effortless movement across all floors for residents and guests alike.
- **Designer Lobby:** An elegantly curated arrival space that blends contemporary design with timeless charm.
- **Spacious Apartments:** Thoughtfully designed layouts offering generous proportions for comfortable, modern living.
- **Spacious Balconies:** Expansive outdoor spaces that invite natural light and mesmerizing views.
- **Hightened Glass Windows:** Floor-to-ceiling windows that frame the outdoors while enhancing light and space indoors.
- **Italian Tile Flooring:** Sophisticated, high-quality Italian tiles that bring understated luxury underfoot.
- **European-branded wood finishes and appliances.** Premium European craftsmanship reflected in every finish and appliance for a refined living experience.
- **Designer Interiors:** Every corner thoughtfully finished to balance visual appeal with everyday functionality.
- **Fully Fitted Kitchens:** State-of-the-art appliances and sleek fittings designed for both ease and elegance in culinary moments.
- **Feature Walls:** Artfully designed wall accents that lend character and depth to your interiors.
- **Consoles:** Bespoke designer consoles and dresser console that add both functionality and aesthetic appeal to every apartment.
- **Exceptional Amenities:** Two floors of thoughtfully curated lifestyle spaces to enrich your everyday.
- **Smart Home System with ALEXA Voice Assistant:** Integrated smart features offering intuitive control and modern convenience at your command.
- **ANPR Car Parking System:** A seamless, number plate recognition parking solution for hassle-free entry and exit.



Starting Price

STUDIO
AED 620,000

1 BED
AED 955,000

2 BED
AED 1,399,000

Payment Plan 1

50% During Construction with **1%** Monthly Payment Plan
50% On Handover

Payment Plan 2

50%
During Construction

15%
On Handover

35%
Post Handover
(**1%** for 35 Months)

Completion Date

DECEMBER
2027

Key Attractions



Dubai Outlet Mall
10 Minutes



Silicon Oasis
10 Minutes



Global Village
15 Minutes



Dubai Safari Park
20 Minutes



IMG Adventures
10 Minutes



Hamdan Sports Complex
14 Minutes



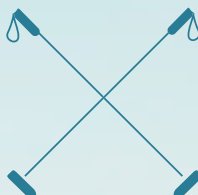
Dubai Mall
15 Minutes



Burj Khalifa
15 Minutes



City Walk
25 Minutes



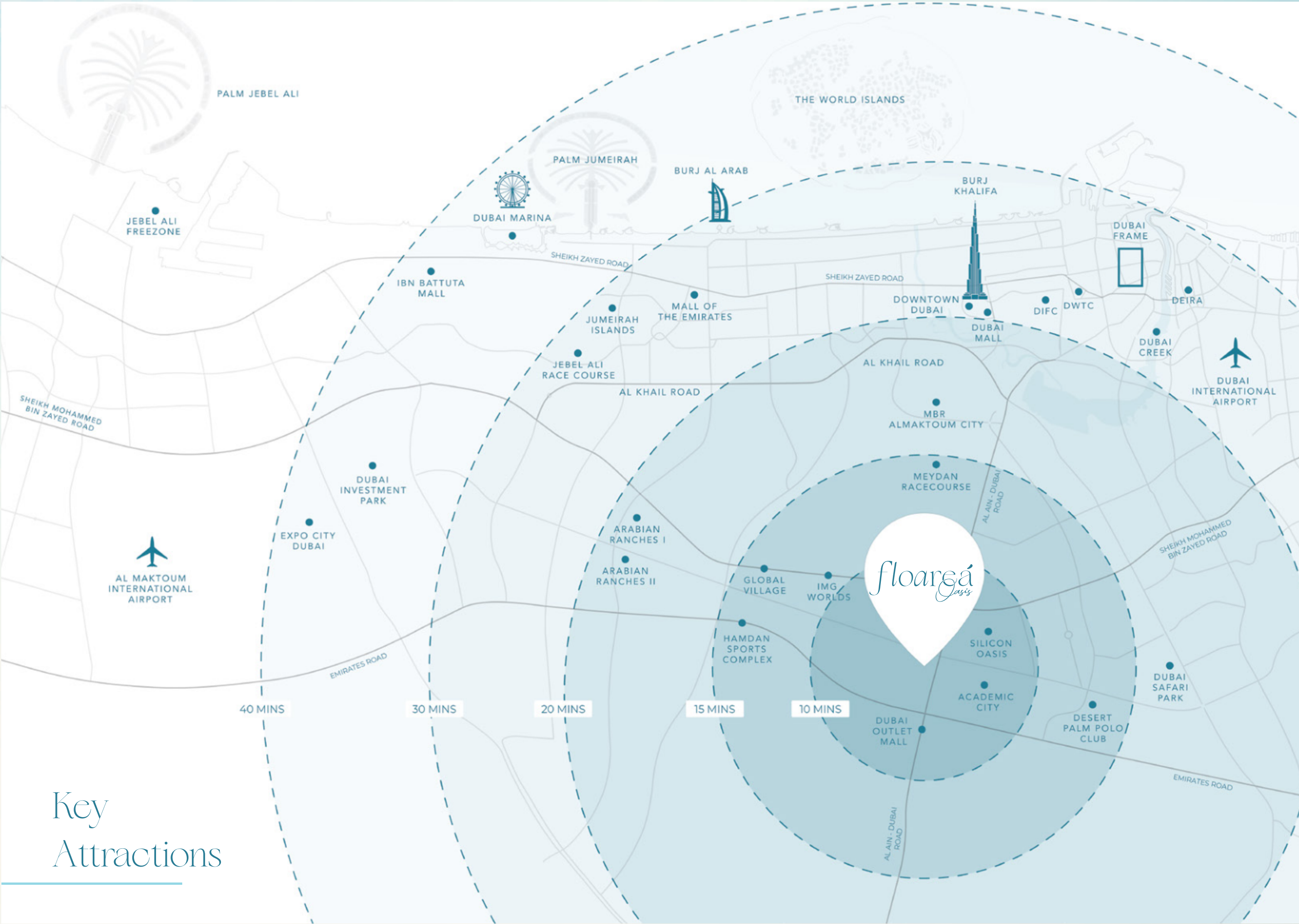
Palm Polo Club
18 Minutes



Al Khail Road
31 Minutes



Meydan Race Course
19 Minutes



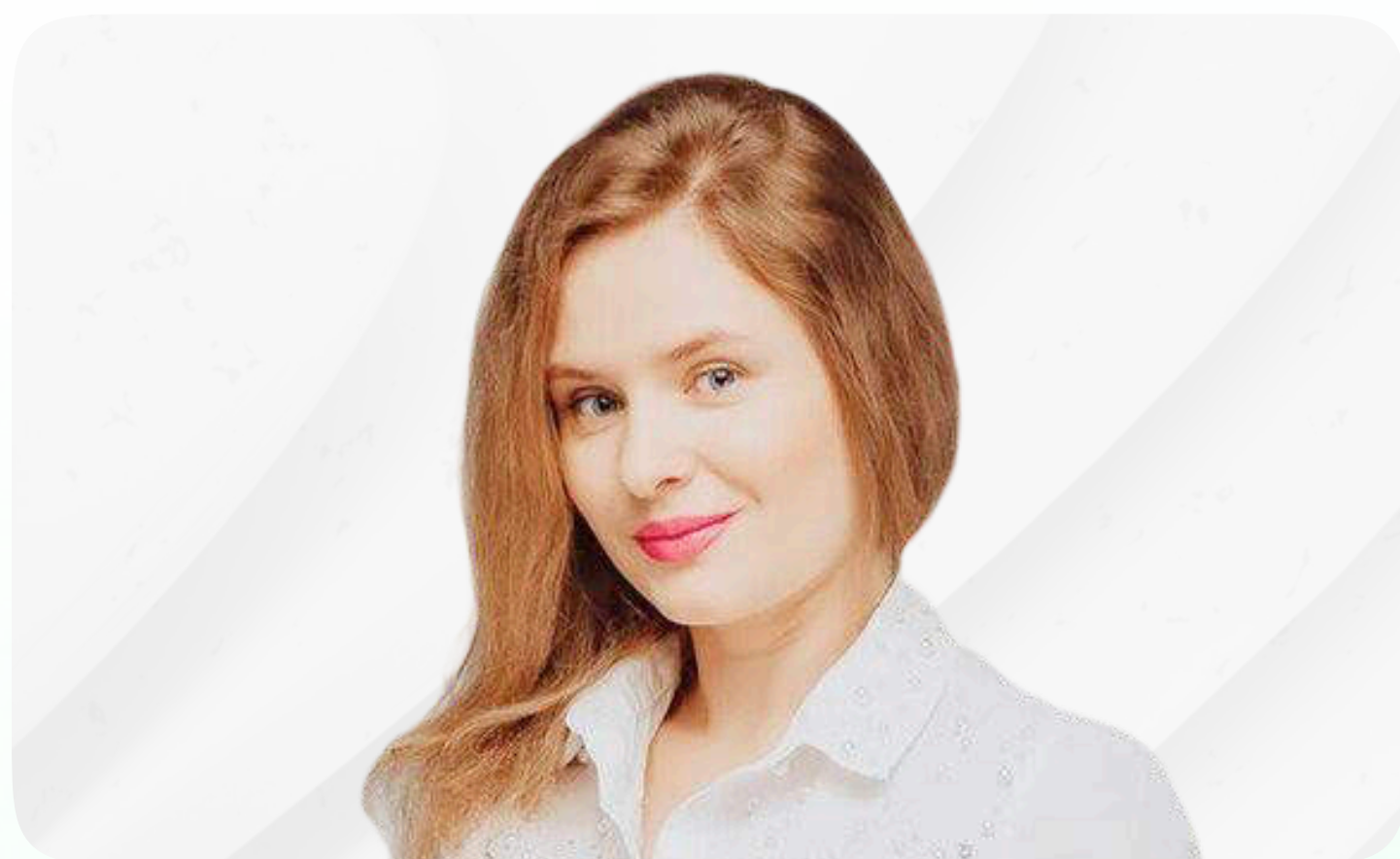
Key
Attractions



housebook international real estate
IT-platform for agents

Whatsapp contacts 

Partnership managers



Alevtina Kapustina



Svetlana Guseva

housebook.deals

partner@housebook.deals