



FOUR SEASONS

PRIVATE RESIDENCES

DUBAI AT DIFC

A DEVELOPMENT BY H&H

UNIT

1301

1301

4 Bedrooms Private Residence

INTERNAL AREA

471.13 sqm / 5071.20 Sqft

EXTERNAL AREA

192.67 sqm / 2073.88 Sqft

TOTAL AREA

663.80 sqm / 7145.08 Sqft

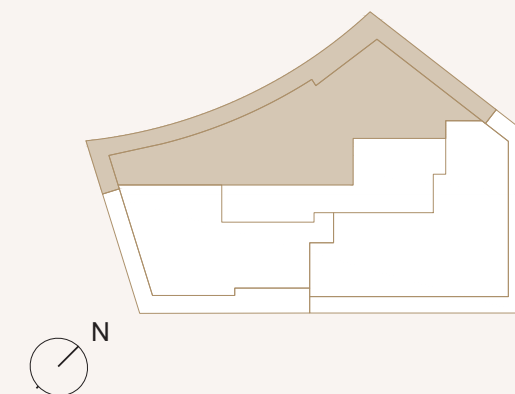
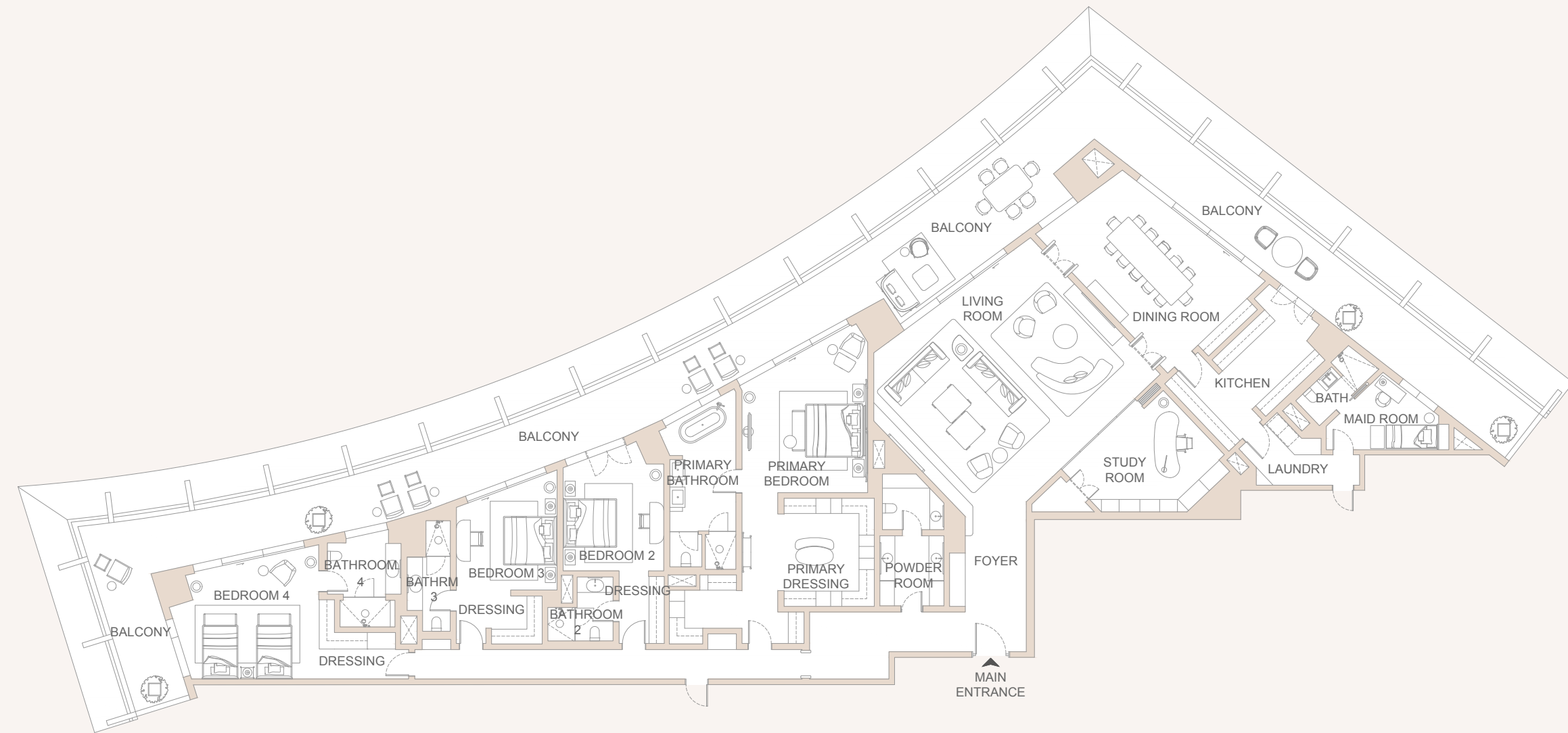
4 Bedrooms
4 Bathrooms
Powder room
Kitchen
Dining room
Dressing area
Living room
Maids room
Laundry
Study

VIEWS

DIFC Skyline view

ASKING PRICE

AED 57,615,789.73



All areas are measured to structural elements and exclude wall finishes and construction tolerances and may not reflect usable area. Areas, dimensions, drawings, plans, and layout are approximate only and subject to change without notice. The furniture and the interior design shown is for illustrative purposes only and the unit is sold without furniture unless otherwise contracted in a separate Sales and Purchase Agreement. Final area may vary from stated area, and drawings are not to scale and may not reflect accurate proportions. This plan and the information it contains are subject to contract terms.

DISCLAIMER:

202

3 Bedrooms Private Residence

INTERNAL AREA

331.20 sqm / 3565.01 Sqft

EXTERNAL AREA

126.72 sqm / 1364 Sqft

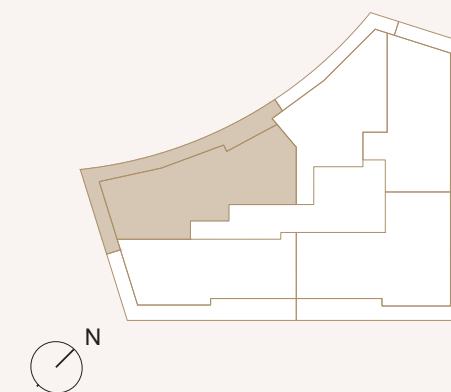
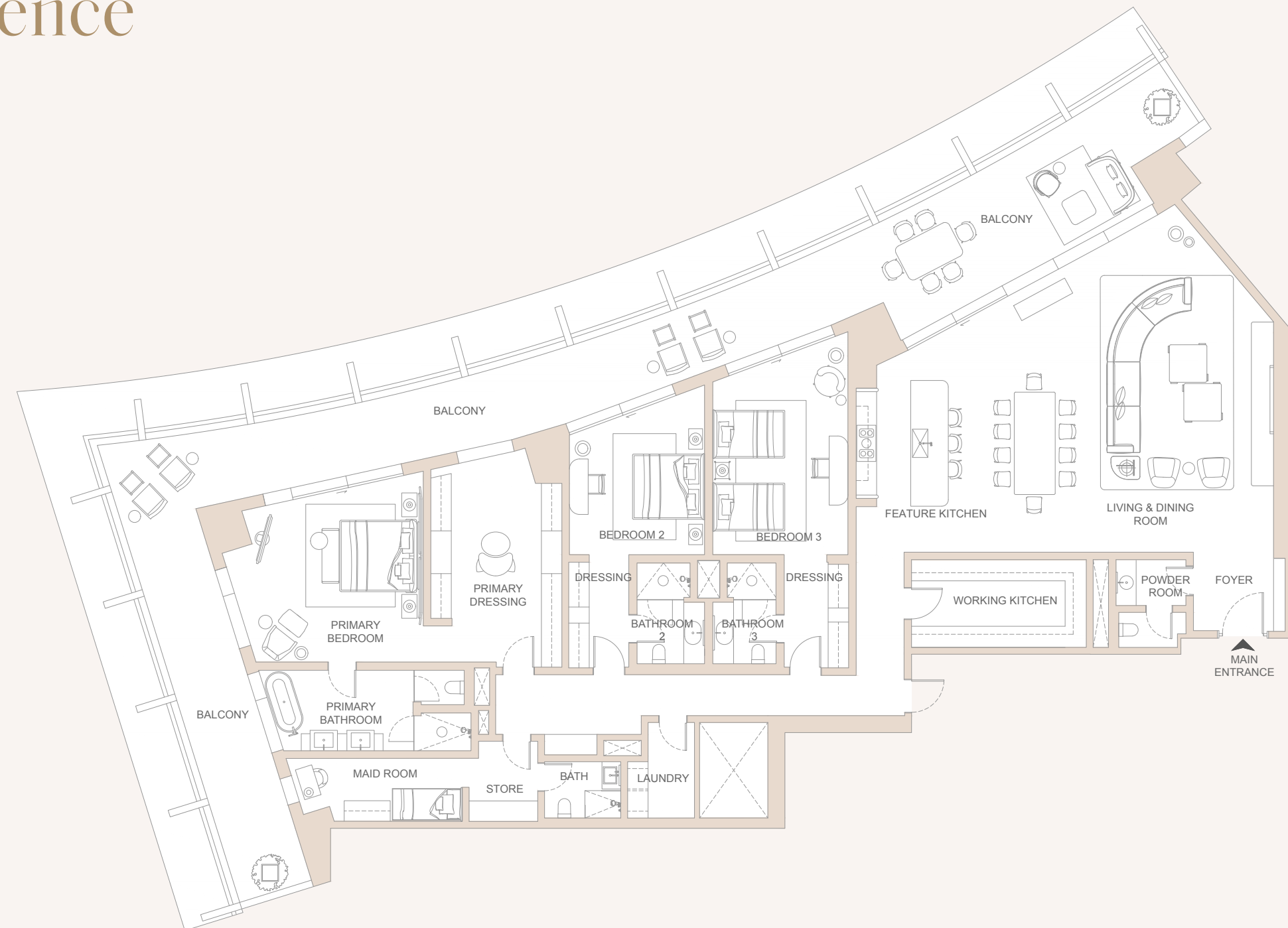
TOTAL AREA

457.92sqm / 4929.01 Sqft

3 Bedrooms
3 Bathrooms
Powder room
Feature Kitchen
Dining room
Dressing area
Living room
Maids room
Laundry
Store

VIEWS

DIFC Skyline view



DISCLAIMER:

All areas are measured to structural elements and exclude wall finishes and construction tolerances and may not reflect usable area. Areas, dimensions, drawings, plans, and layout are approximate only and subject to change without notice. The furniture and the interior design shown is for illustrative purposes only and the unit is sold without furniture unless otherwise contracted in a separate Sales and Purchase Agreement. Final area may vary from stated area, and drawings are not to scale and may not reflect accurate proportions. This plan and the information it contains are subject to contract terms.

204

3 Bedrooms Private Residence

INTERNAL AREA

313.57 sqm / 3375.24 Sqft

EXTERNAL AREA

133.66 sqm / 1438.70 Sqft

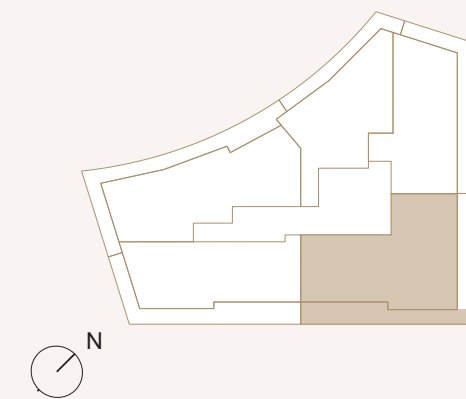
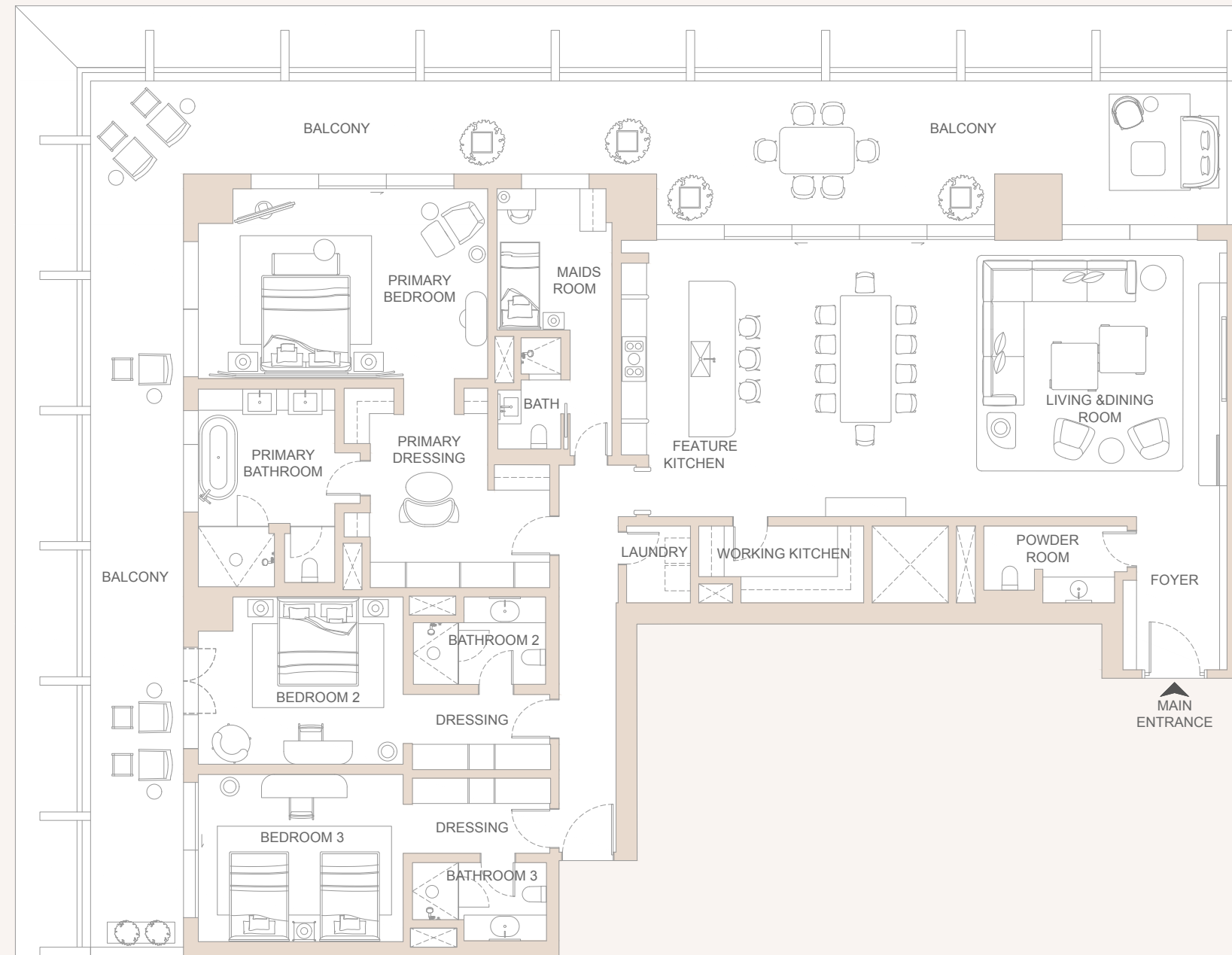
TOTAL AREA

447.23 sqm / 4813.94 Sqft

3 Bedrooms
3 Bathrooms
Powder room
Feature Kitchen
Working Kitchen
Dining room
Dressing area
Living room
MaidS room
Laundry

VIEWS

Zaabeel view



302

3 Bedrooms Private Residence

INTERNAL AREA

331.20 sqm / 3565.01 Sqft

EXTERNAL AREA

126.72 sqm / 1364.00 Sqft

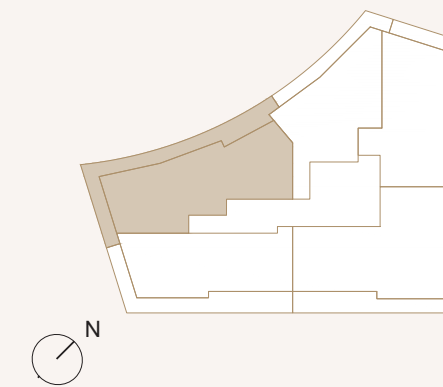
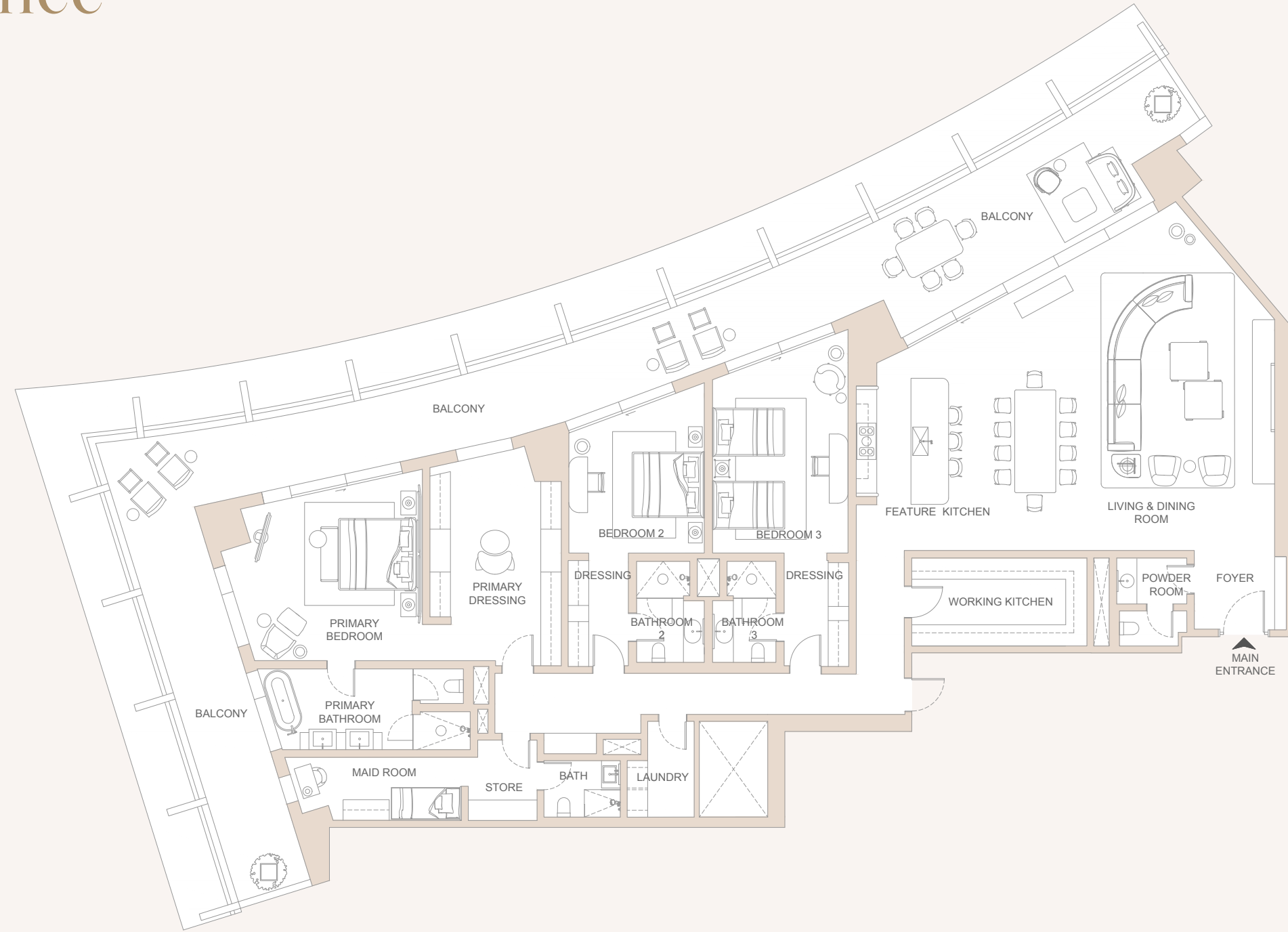
TOTAL AREA

457.92 sqm / 4929.01 Sqft

3 Bedrooms
3 Bathrooms
Powder room
Feature Kitchen
Working Kitchen
Dining room
Living room
Maids room
Laundry
Store

VIEWS

DIFC Skyline view



DISCLAIMER:

All areas are measured to structural elements and exclude wall finishes and construction tolerances and may not reflect usable area. Areas, dimensions, drawings, plans, and layout are approximate only and subject to change without notice. The furniture and the interior design shown is for illustrative purposes only and the unit is sold without furniture unless otherwise contracted in a separate Sales and Purchase Agreement. Final area may vary from stated area, and drawings are not to scale and may not reflect accurate proportions. This plan and the information it contains are subject to contract terms.

304

3 Bedrooms Private Residence

INTERNAL AREA

313.57 sqm / 3375.24 Sqft

EXTERNAL AREA

133.66 sqm / 1438.70 Sqft

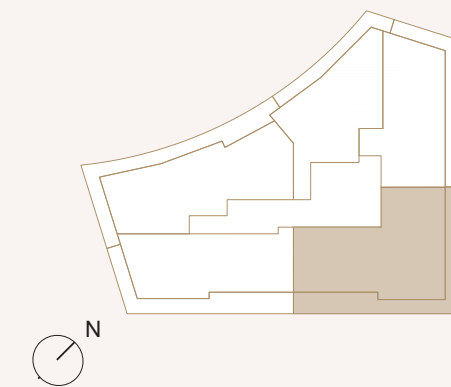
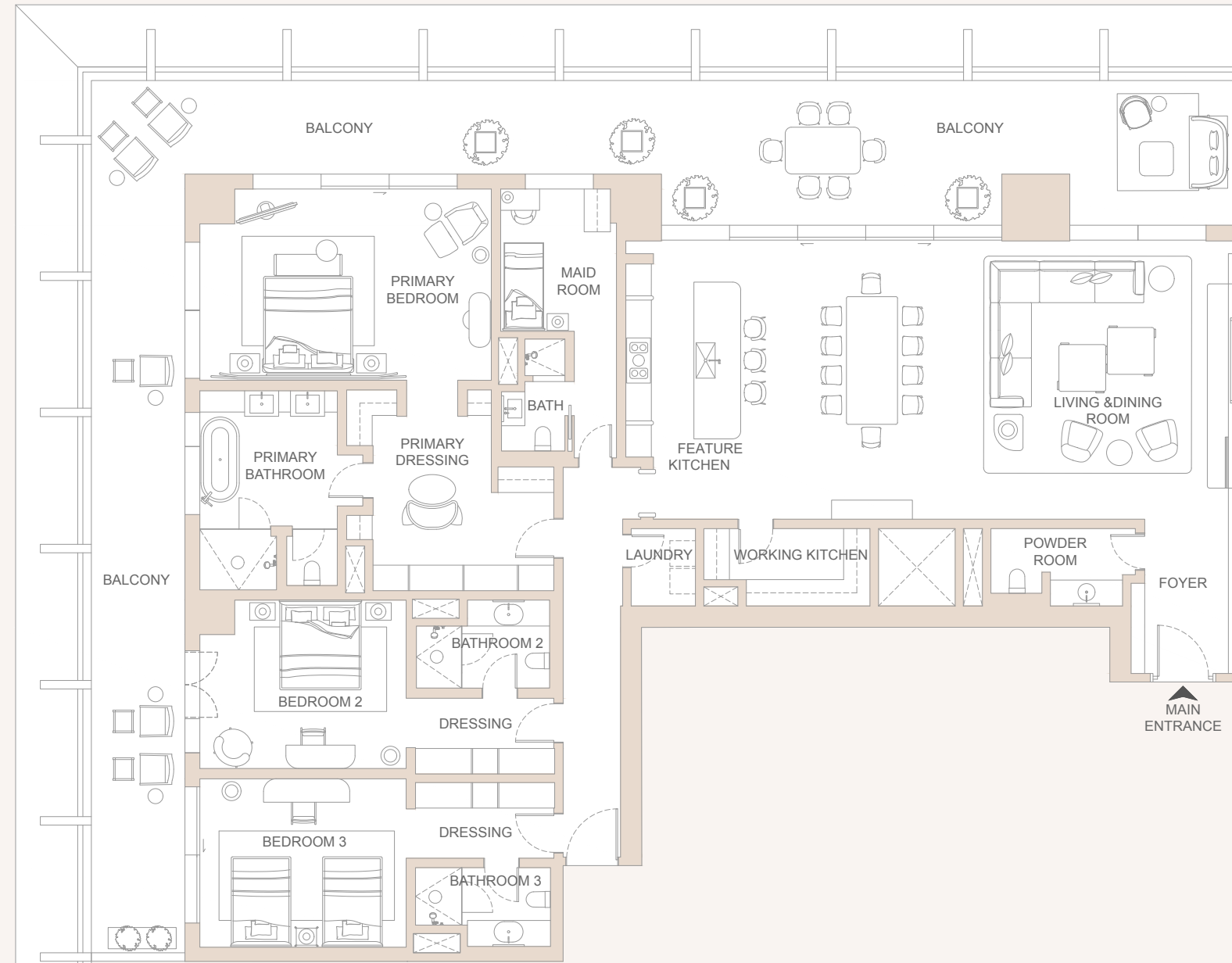
TOTAL AREA

447.23 sqm / 4813.94 Sqft

3 Bedrooms
3 Bathrooms
Powder room
Feature Kitchen
Working Kitchen
Dressing area
Dining room
Living room
Maids room
Laundry

VIEWS

Zaabeel view



404

3 Bedrooms Private Residence

INTERNAL AREA

313.57 sqm / 3375.24 Sqft

EXTERNAL AREA

133.66 sqm / 1438.70 Sqft

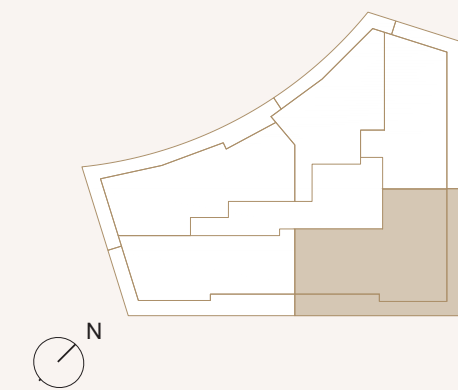
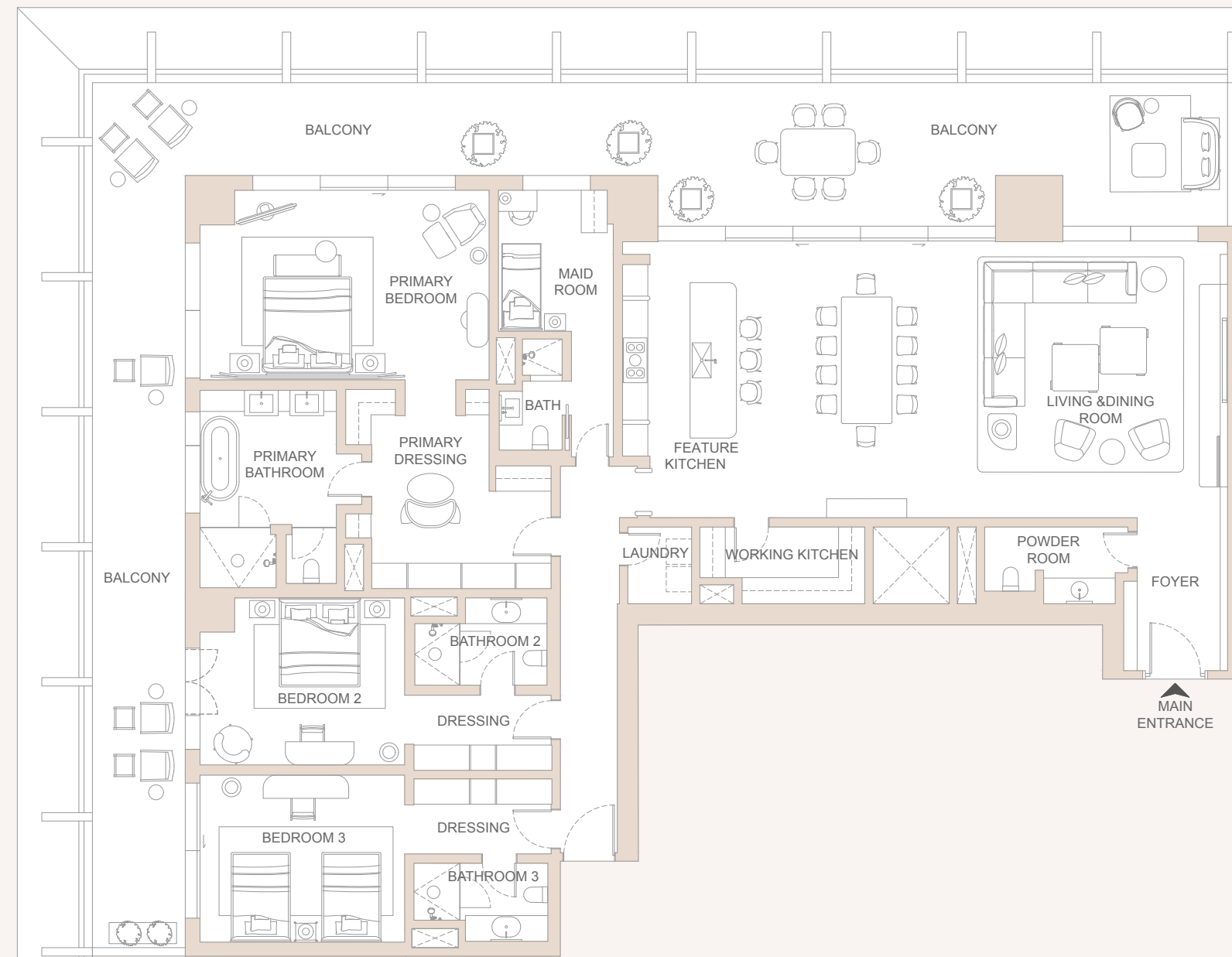
TOTAL AREA

447.23 sqm / 4813.94 Sqft

3 Bedrooms
3 Bathrooms
Powder room
Feature Kitchen
Working Kitchen
Dining room
Dressing
Living room
Maids room
Laundry

VIEWS

Zaabeel view



702

3 Bedrooms Private Residence

INTERNAL AREA

331.20 sqm / 3565.01 Sqft

EXTERNAL AREA

126.72 sqm / 1364.00 Sqft

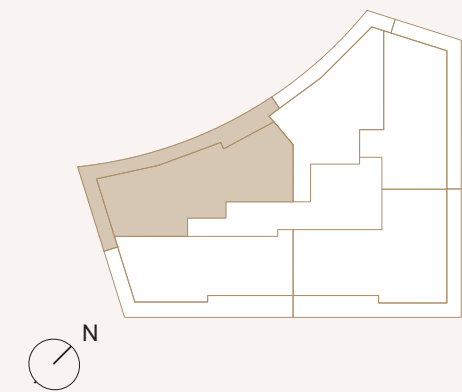
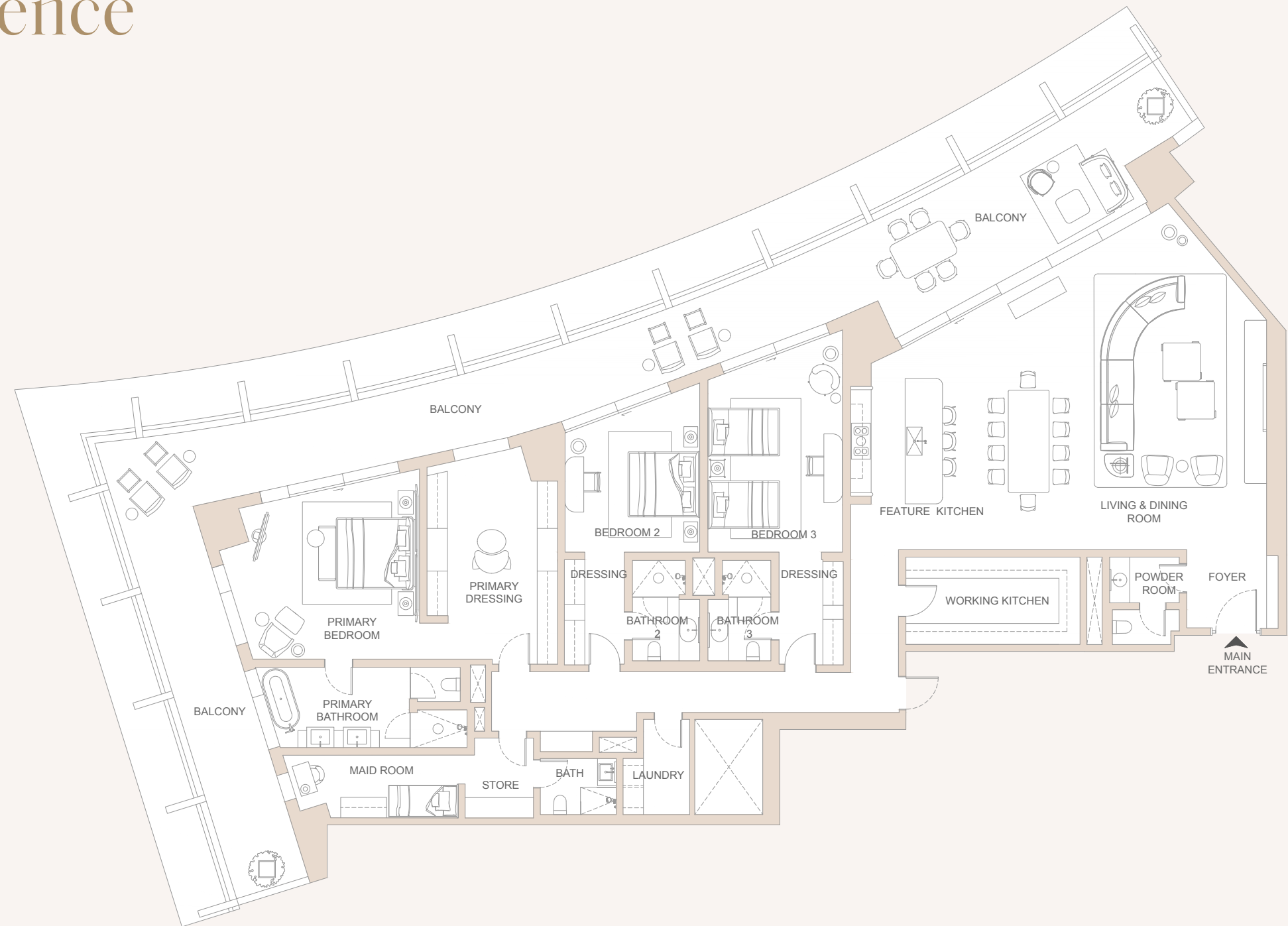
TOTAL AREA

457.92 sqm / 4929.01 Sqft

3 Bedrooms
3 Bathrooms
Powder room
Feature Kitchen
Workign Kitchen
Dining room
Dressing area
Living room
Maids room
Laundry
Store

VIEWS

DIFC Skyline view



DISCLAIMER:

All areas are measured to structural elements and exclude wall finishes and construction tolerances and may not reflect usable area. Areas, dimensions, drawings, plans, and layout are approximate only and subject to change without notice. The furniture and the interior design shown is for illustrative purposes only and the unit is sold without furniture unless otherwise contracted in a separate Sales and Purchase Agreement. Final area may vary from stated area, and drawings are not to scale and may not reflect accurate proportions. This plan and the information it contains are subject to contract terms.

802

3 Bedrooms Private Residence

INTERNAL AREA

331.20 sqm / 3565.01 Sqft

EXTERNAL AREA

126.72 sqm / 1364.00 Sqft

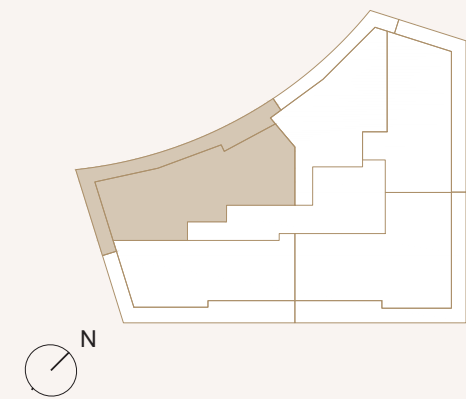
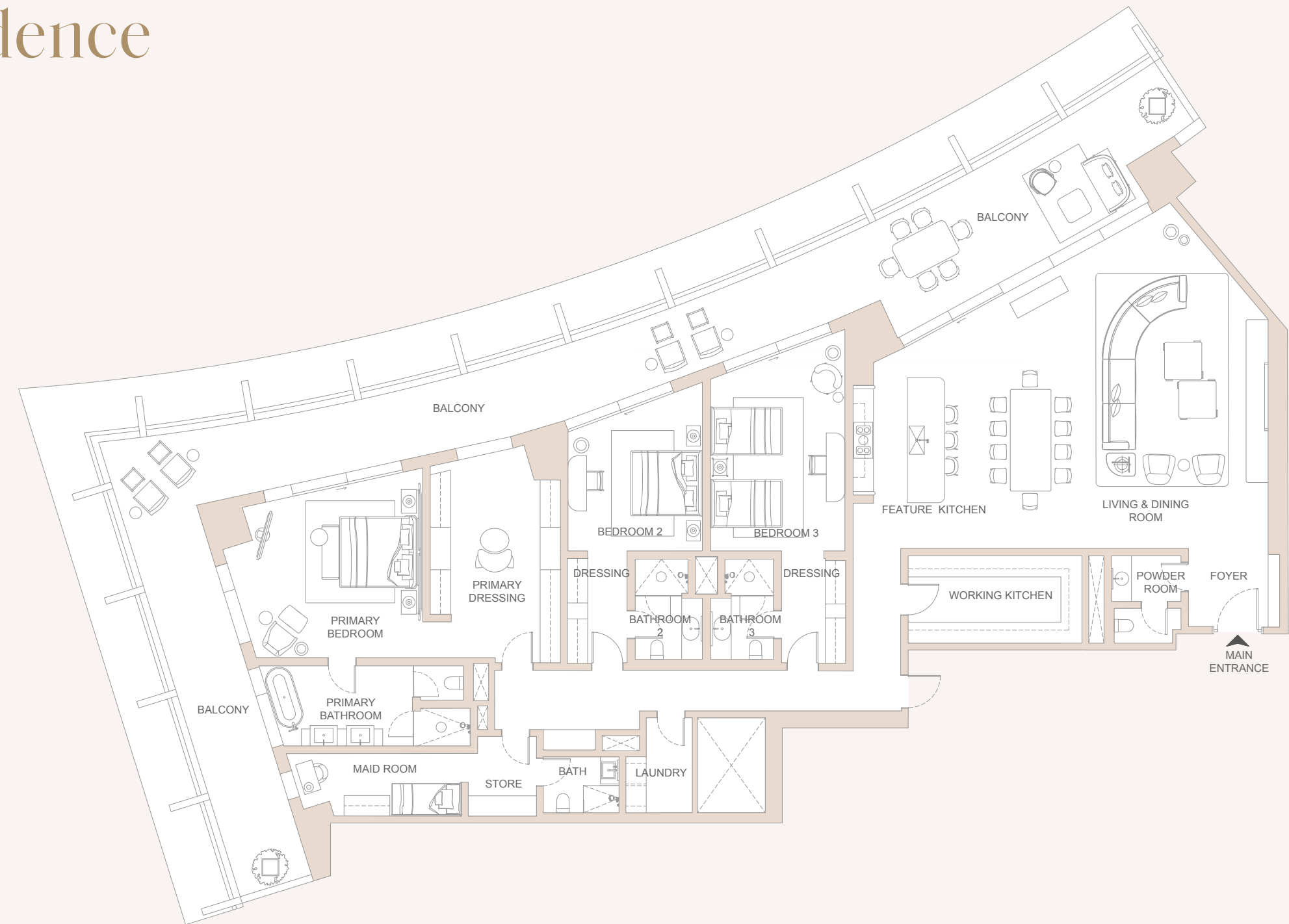
TOTAL AREA

457.92 sqm / 4929.01 Sqft

3 Bedrooms
3 Bathrooms
Powder room
Feature Kitchen
Working Kitchen
Dining room
Dressing area
Living room
Maids room
Laundry
Store

VIEWS

DIFC Skyline view



DISCLAIMER:

All areas are measured to structural elements and exclude wall finishes and construction tolerances and may not reflect usable area. Areas, dimensions, drawings, plans, and layout are approximate only and subject to change without notice. The furniture and the interior design shown is for illustrative purposes only and the unit is sold without furniture unless otherwise contracted in a separate Sales and Purchase Agreement. Final area may vary from stated area, and drawings are not to scale and may not reflect accurate proportions. This plan and the information it contains are subject to contract terms.

1001

4 Bedrooms Private Residence

INTERNAL AREA

486.33 sqm / 5234.81 Sqft

EXTERNAL AREA

159.06 sqm / 1712.11 Sqft

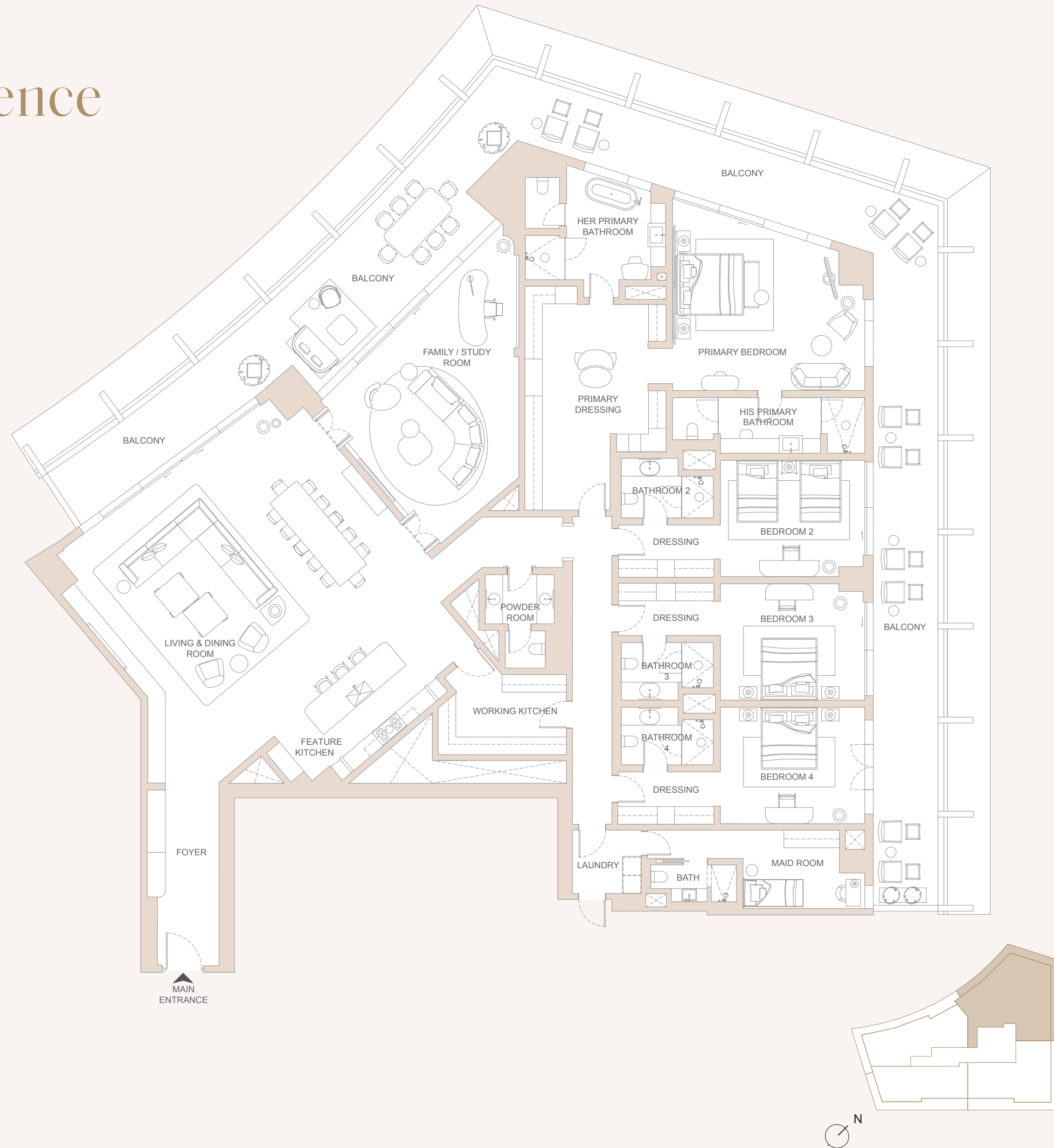
TOTAL AREA

645.39 sqm / 6946.92 Sqft

4 Bedrooms
4 Bathrooms
Powder room
Kitchen
Dining room
Feature Kitchen
Working Kitchen
Living room
Dressing area
Family room
Maids room
Laundry
Study

VIEWS

DIFC Skyline view



DISCLAIMER:

All areas are measured to structural elements and exclude wall finishes and construction tolerances and may not reflect usable area. Areas, dimensions, drawings, plans, and layout are approximate only and subject to change without notice. The furniture and the interior design shown is for illustrative purposes only and the unit is sold without furniture unless otherwise contracted in a separate Sales and Purchase Agreement. Final area may vary from stated area, and drawings are not to scale and may not reflect accurate proportions. This plan and the information it contains are subject to contract terms.

1303

4 Bedrooms Private Residence

INTERNAL AREA

409.69 sqm / 4409.87 Sqft

EXTERNAL AREA

150.11 sqm / 1615.77 Sqft

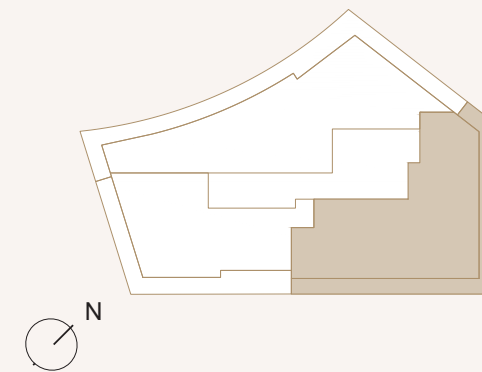
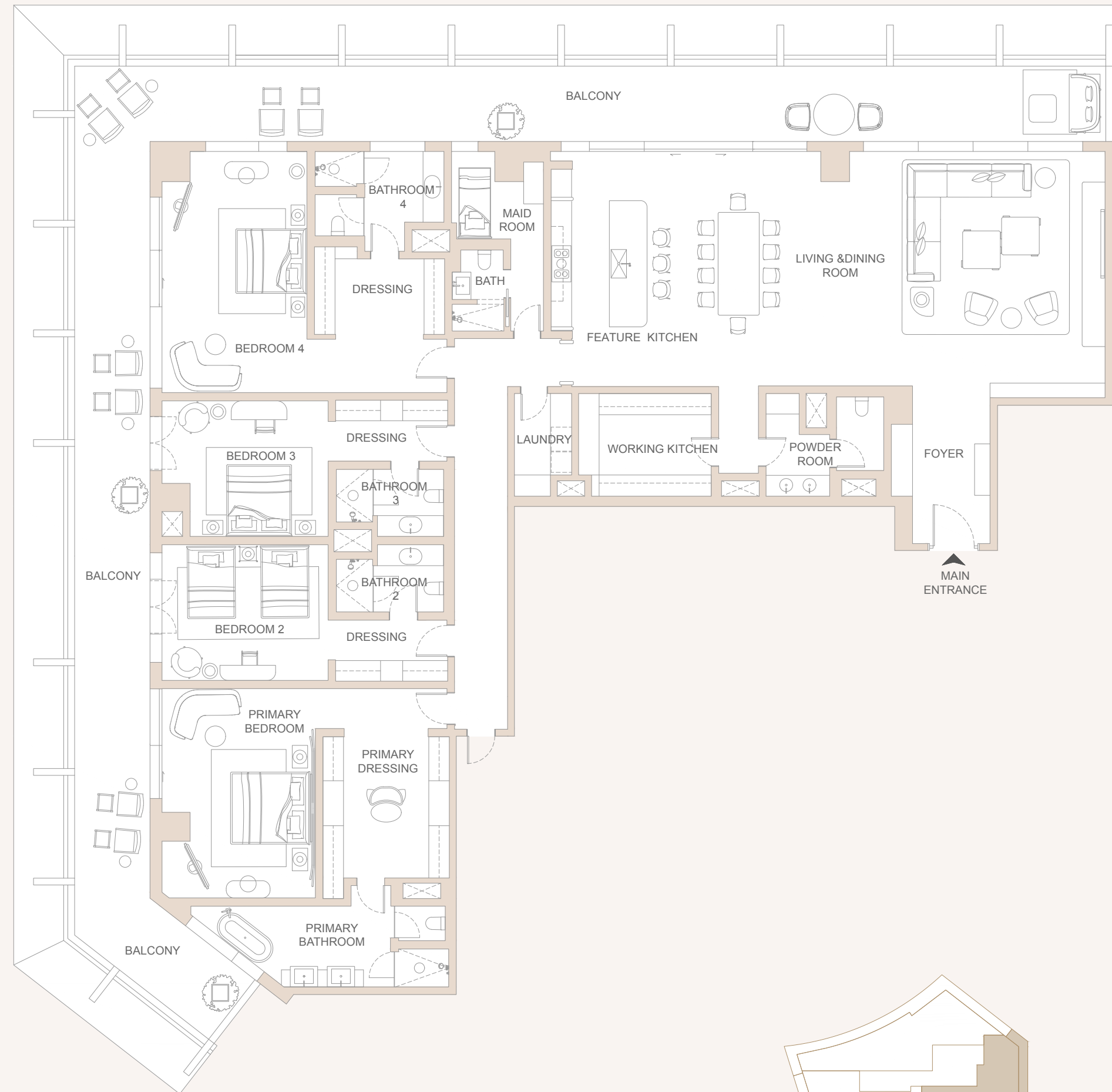
TOTAL AREA

559.80 sqm / 6025.64 Sqft

4 Bedrooms
4 Bathrooms
Powder room
Feature Kitchen
Working Kitchen
Dining room
Dressing area
Living room
Family room
Maid room
Laundry

VIEWS

Zaabeel view



DISCLAIMER:

All areas are measured to structural elements and exclude wall finishes and construction tolerances and may not reflect usable area. Areas, dimensions, drawings, plans, and layout are approximate only and subject to change without notice. The furniture and the interior design shown is for illustrative purposes only and the unit is sold without furniture unless otherwise contracted in a separate Sales and Purchase Agreement. Final area may vary from stated area, and drawings are not to scale and may not reflect accurate proportions. This plan and the information it contains are subject to contract terms.

1401

4 Bedrooms Private Residence

INTERNAL AREA

471.13 sqm / 5071.20 Sqft

EXTERNAL AREA

192.67 sqm / 2073.88 Sqft

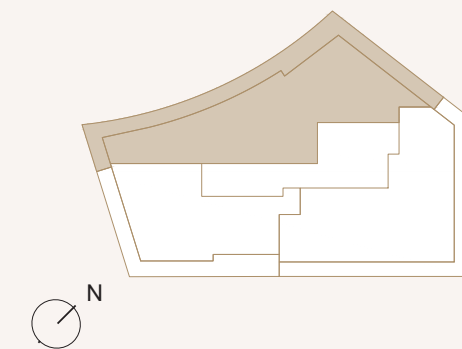
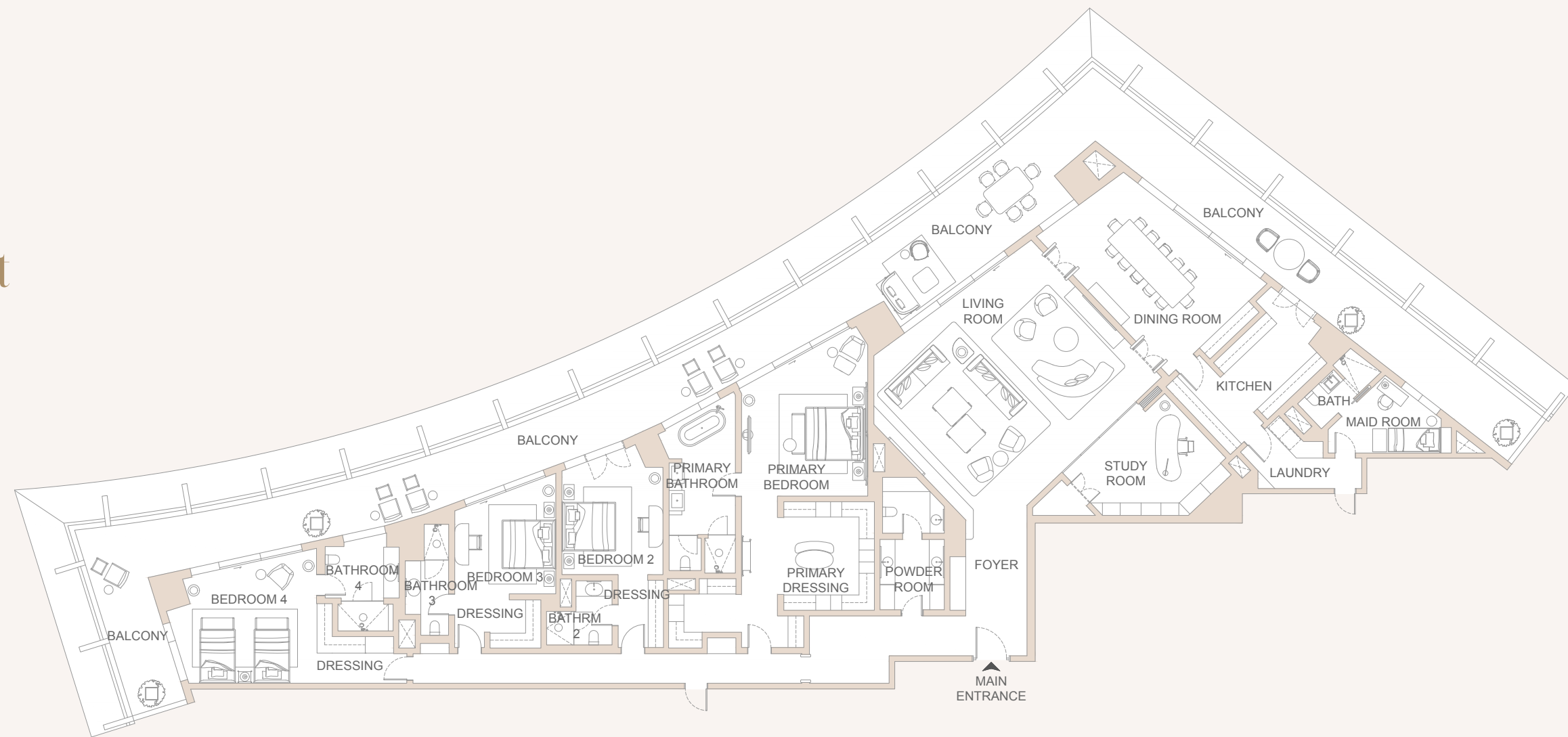
TOTAL AREA

663.80 sqm / 7145.08 Sqft

4 Bedrooms
4 Bathrooms
Powder room
Kitchen
Dressing area
Dining room
Living room
Maids room
Laundry
Study room

VIEWS

DIFC Skyline view



DISCLAIMER:

All areas are measured to structural elements and exclude wall finishes and construction tolerances and may not reflect usable area. Areas, dimensions, drawings, plans, and layout are approximate only and subject to change without notice. The furniture and the interior design shown is for illustrative purposes only and the unit is sold without furniture unless otherwise contracted in a separate Sales and Purchase Agreement. Final area may vary from stated area, and drawings are not to scale and may not reflect accurate proportions. This plan and the information it contains are subject to contract terms.



hoûsebook

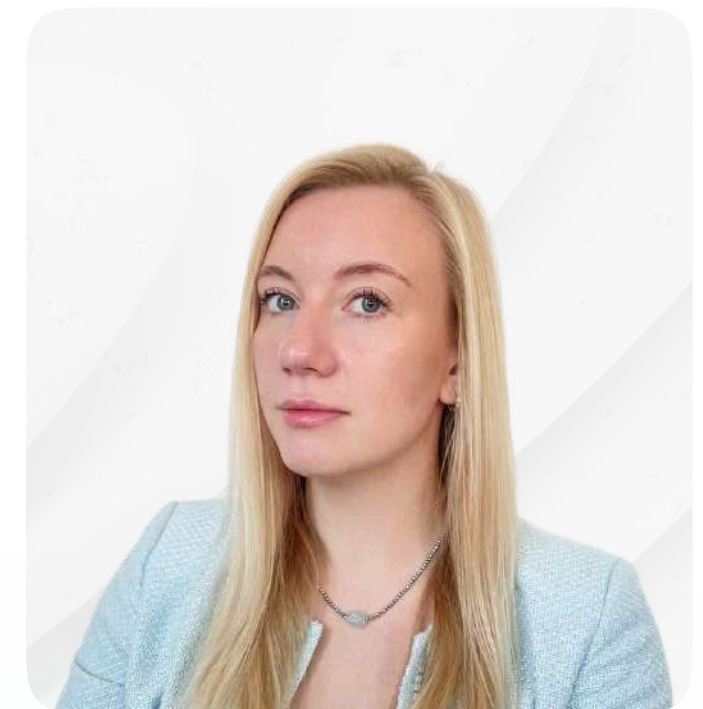
international real estate
IT-platform for agents

Whatsapp contacts 

Partnership managers



Alevtina
Kapustina



Svetlana
Guseva

housebook.deals

partner@housebook.deals