



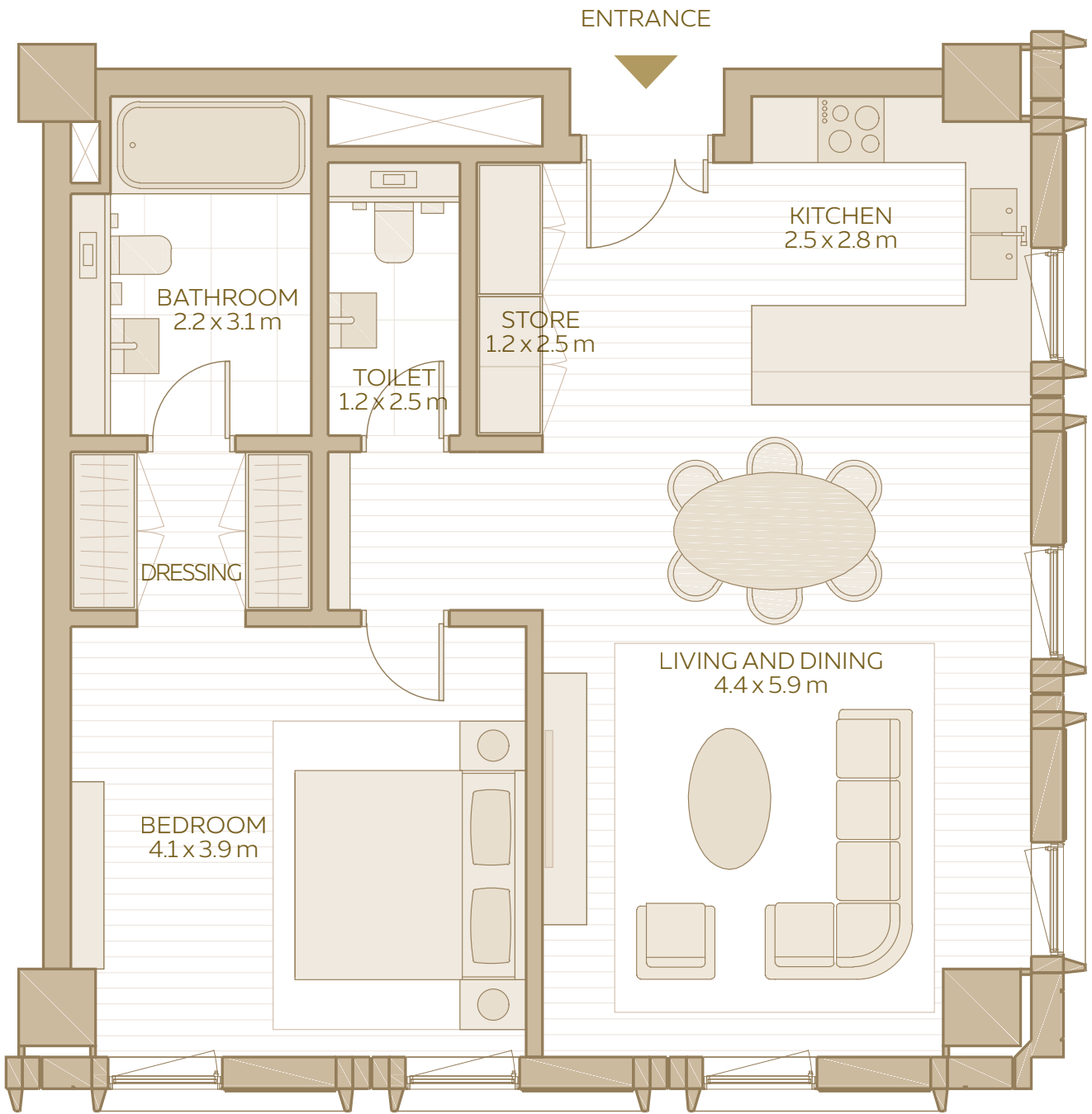
LIVE IN LUXURY AT THE  
HEART OF EXPO CITY DUBAI

# AL WAHA

SIGNATURE RESIDENCES BY EXPO CITY DUBAI



1-BEDROOM APARTMENT  
(TYPE 1)

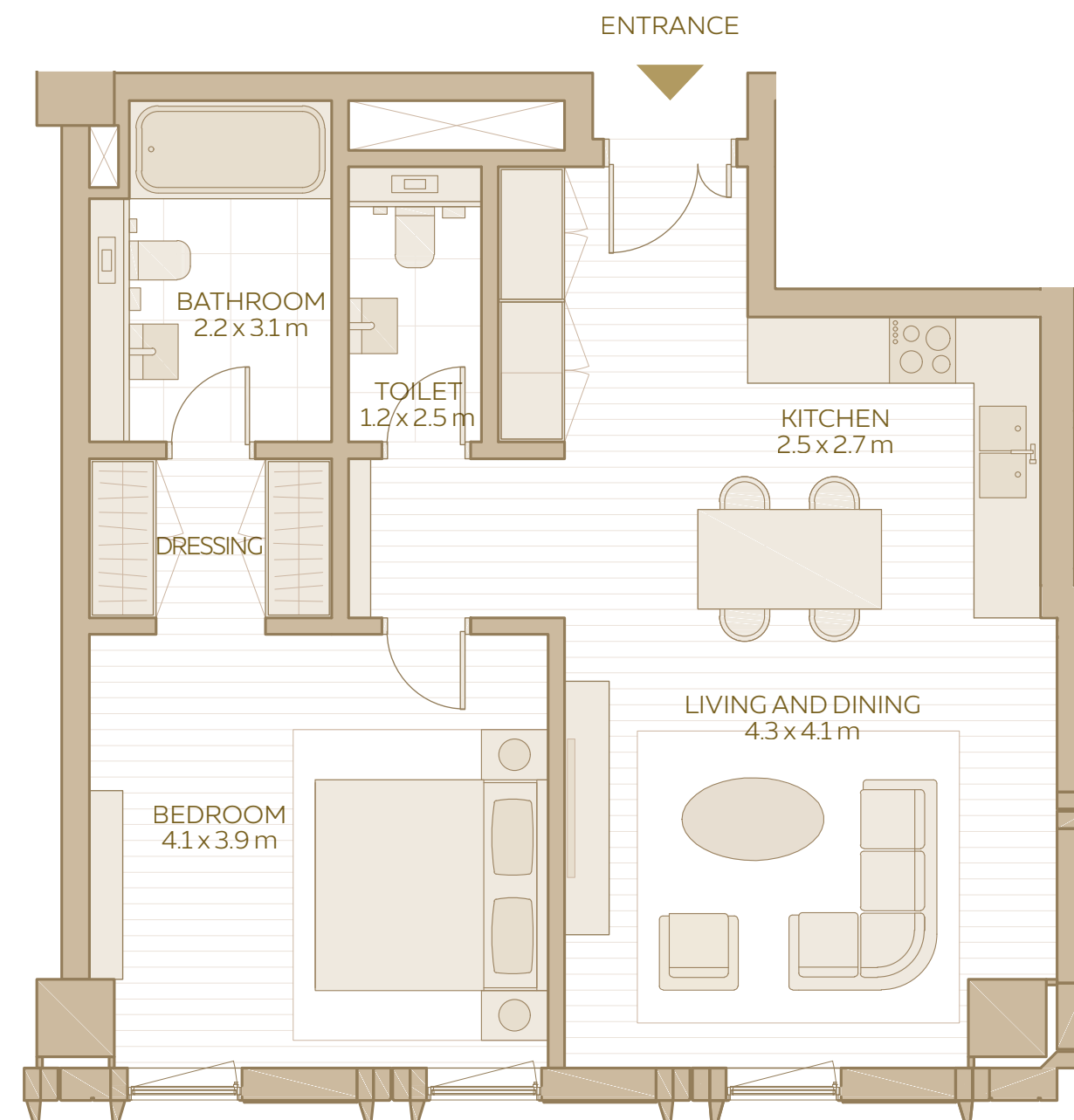


1-BEDROOM  
APARTMENT  
TYPE 1

TOTAL AREA:  
80.40 SQM / 865.42 SQFT

AREA RANGE:  
72.40 SQM - 80.40 SQM  
779.31 SQFT - 865.42 SQFT

## 1-BEDROOM APARTMENT (TYPE 3)



## 1-BEDROOM APARTMENT TYPE 3

**TOTAL AREA:**  
68.71 SQM / 739.59 SQFT

**AREA RANGE:**  
68.71 SQM - 72.41 SQM  
739.59 SQFT - 779.41 SQFT

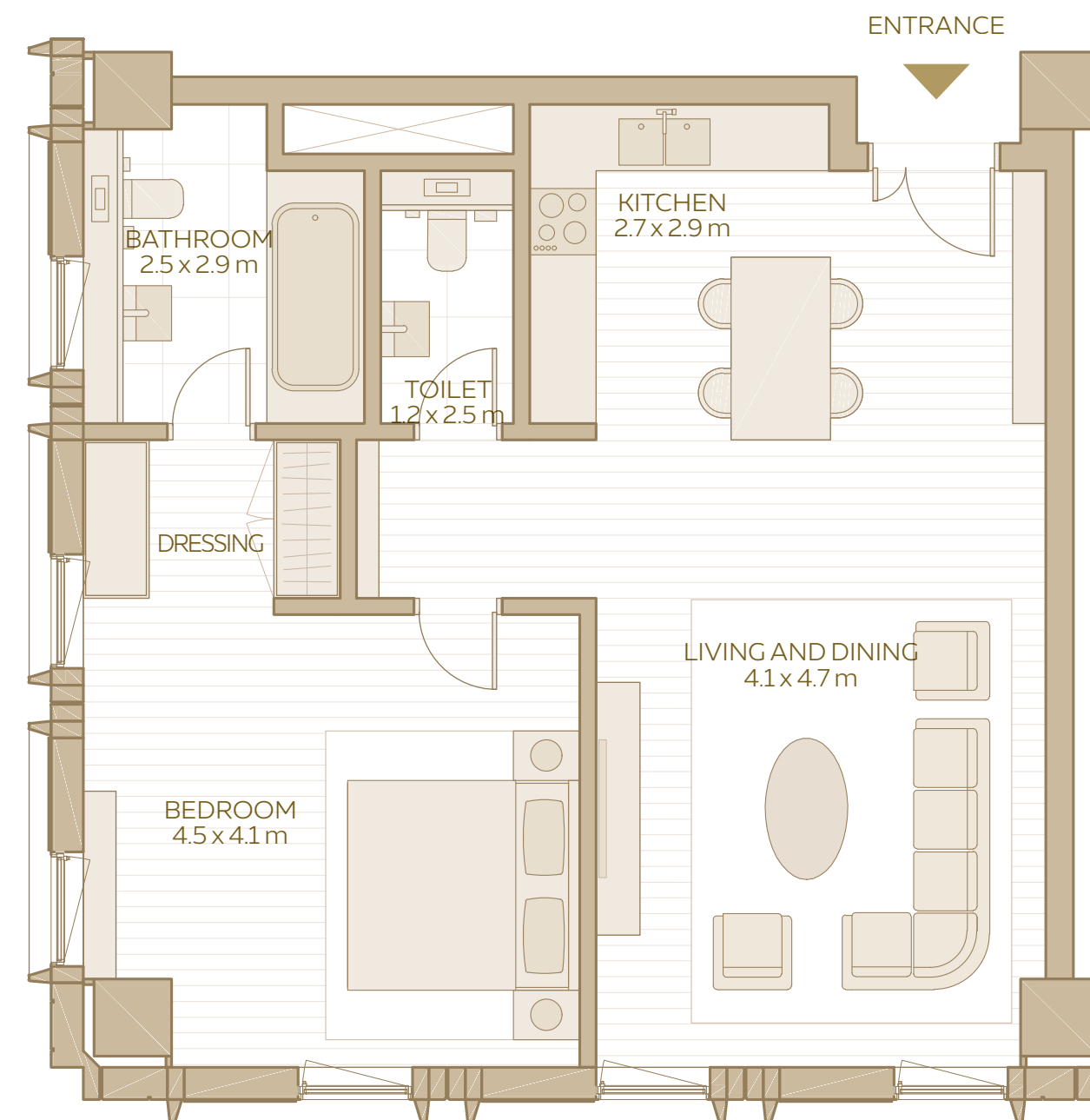


DISCLAIMER: 1. All room dimensions are in metres to the nearest decimal place, measured to structural elements, and exclude wall finishes and construction tolerances. 2. All dimensions have been provided by our consultant architects. 3. Areas are exclusive of partition walls, risers and terraces. 4. All materials, dimensions, drawings, features and amenities are approximate at the time of printing. 5. Actual area may vary from stated area. 6. Drawings not to scale E&OE. 7. Unit plans may exist in mirrored versions. 8. The developer reserves the right to make revisions to the floor plans and any features, materials, dimensions, drawings and amenities mentioned on this plan and in the brochure without notice.

AL WAHA

10 - UNIT PLANS

## 1-BEDROOM APARTMENT (TYPE 4)

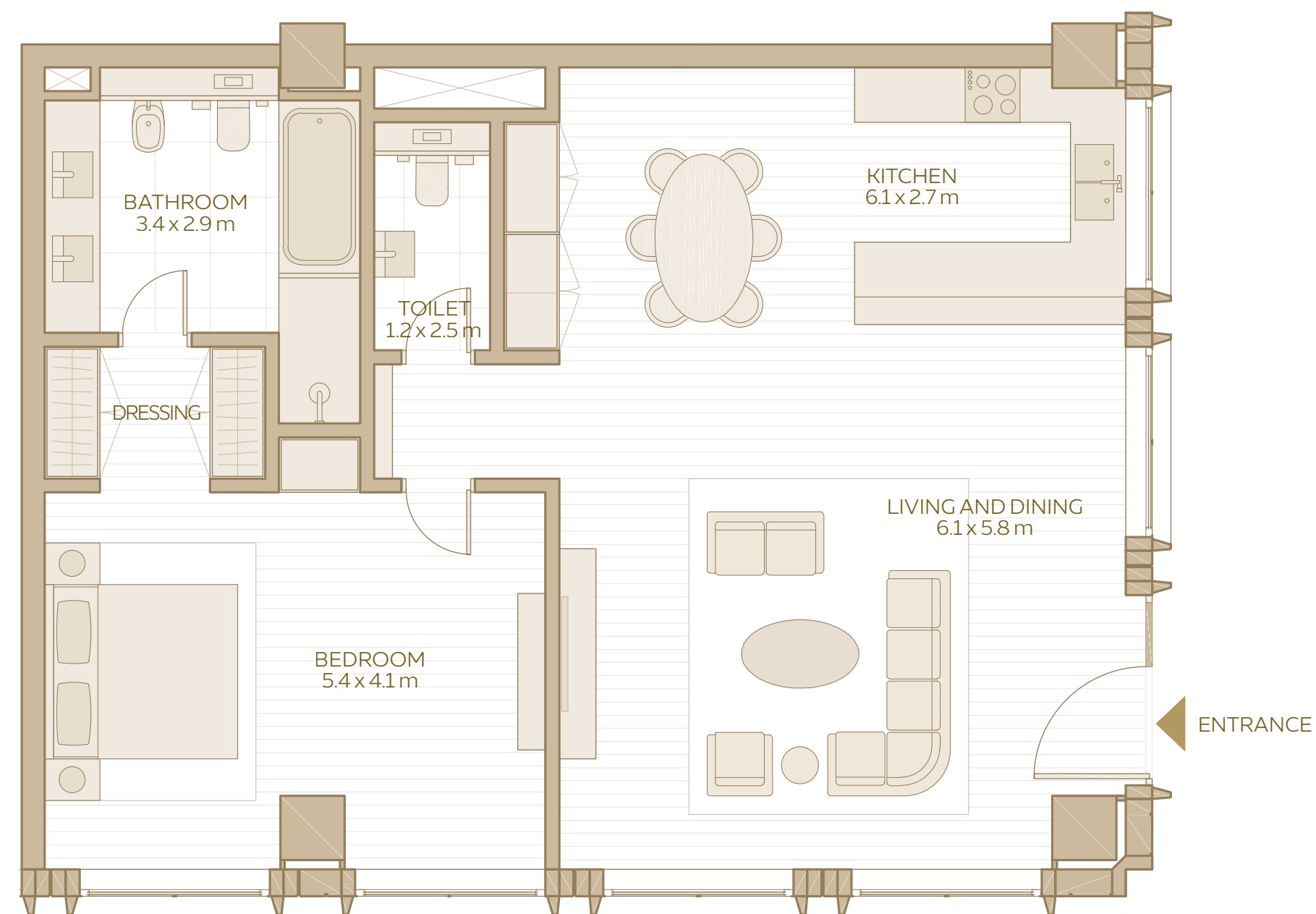


## 1-BEDROOM APARTMENT TYPE 4

**TOTAL AREA:**  
78.60 SQM / 846.04 SQFT

**AREA RANGE:**  
78.60 SQM - 87.53 SQM  
846.04 SQFT - 942.17 SQFT

## 1-BEDROOM APARTMENT (TYPE 5)

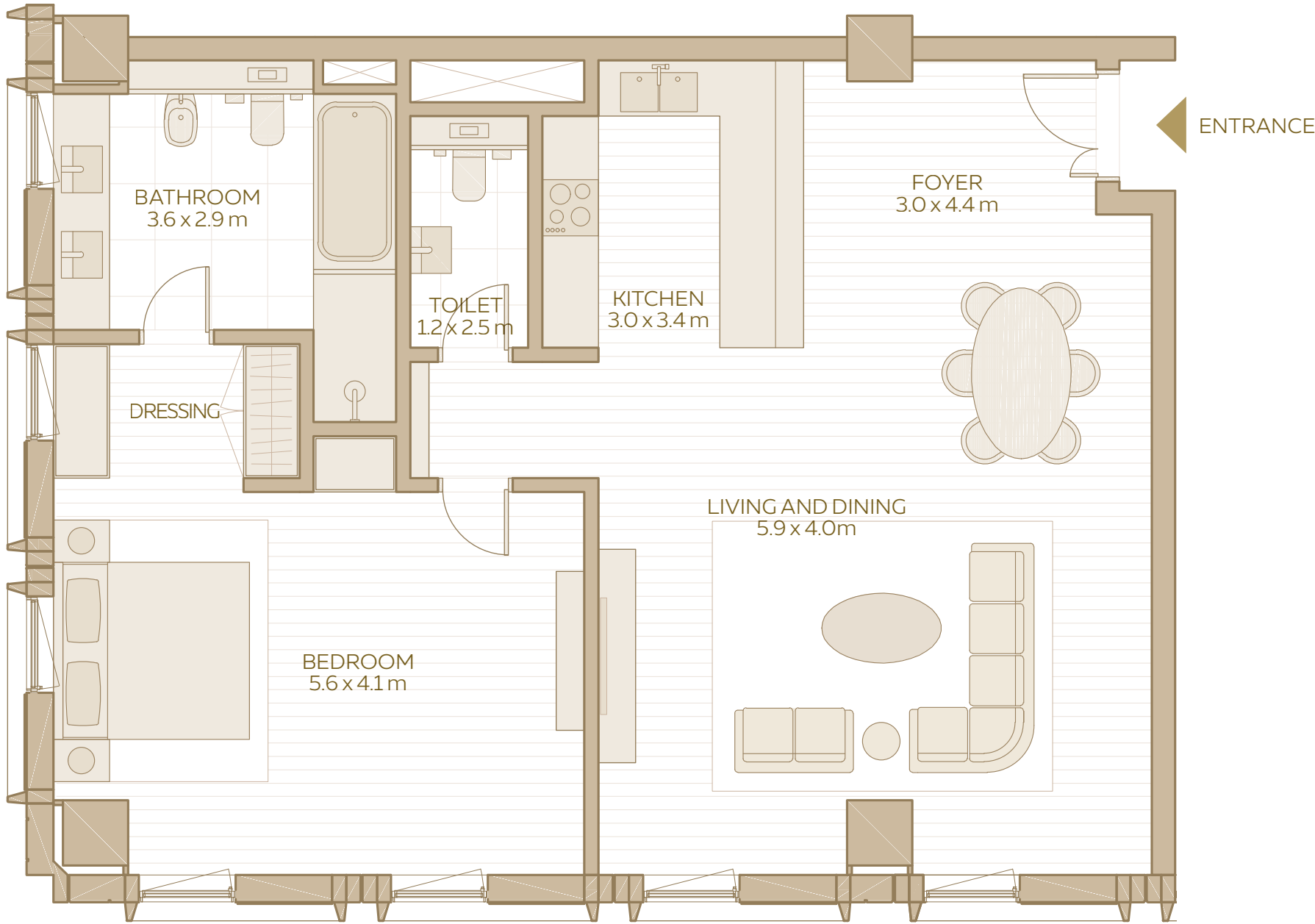


## 1-BEDROOM APARTMENT TYPE 5

**TOTAL AREA:**  
107.85 SQM / 1,160.89 SQFT

**AREA RANGE:**  
103.22 SQM - 107.85 SQM  
1,111.05 SQFT - 1,160.89 SQFT

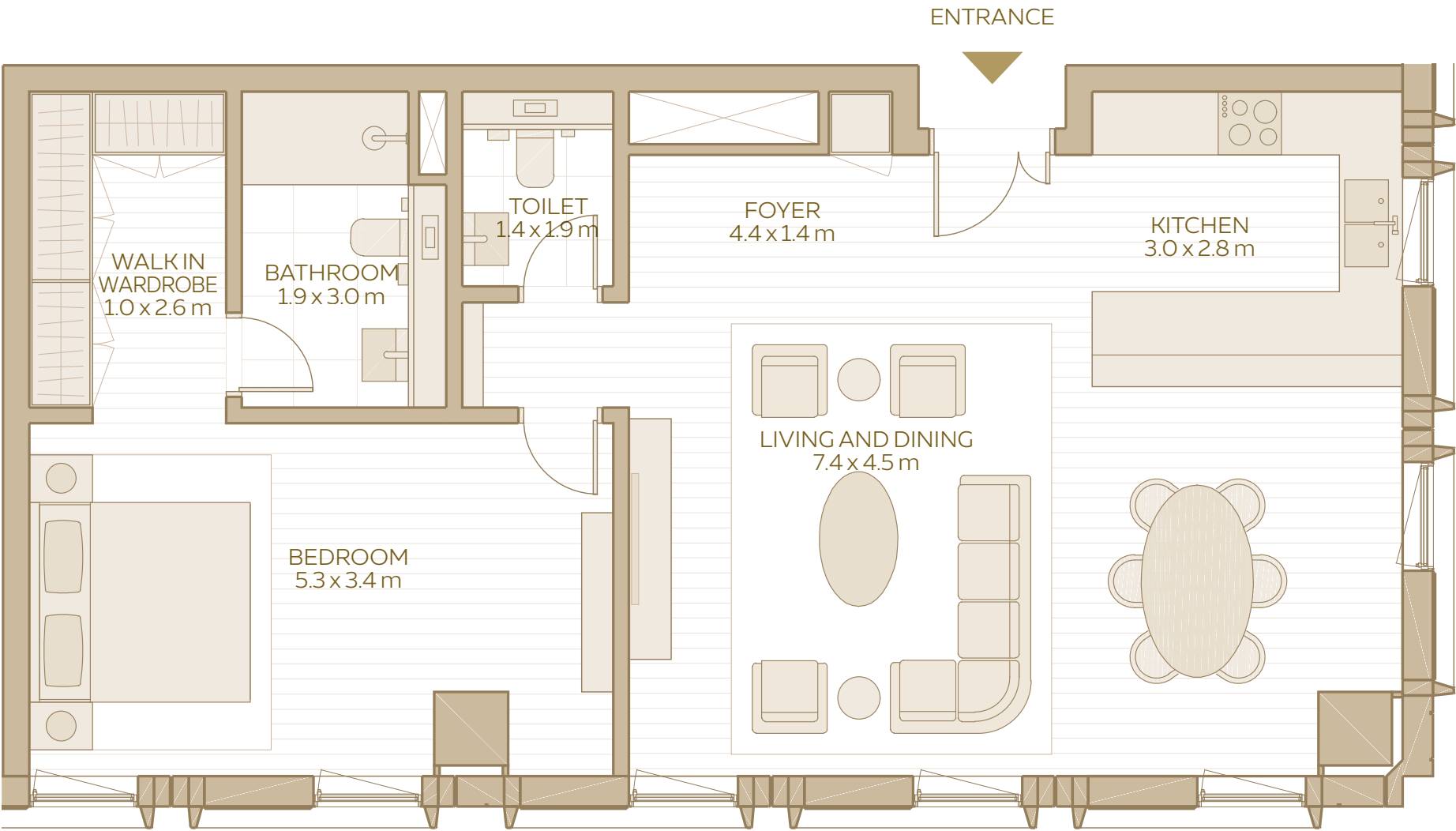
1-BEDROOM APARTMENT  
(TYPE 6)



1-BEDROOM  
APARTMENT  
TYPE 6

AREA RANGE:  
103.19 SQM / 1,110.73 SQFT

1-BEDROOM APARTMENT  
(TYPE 7)

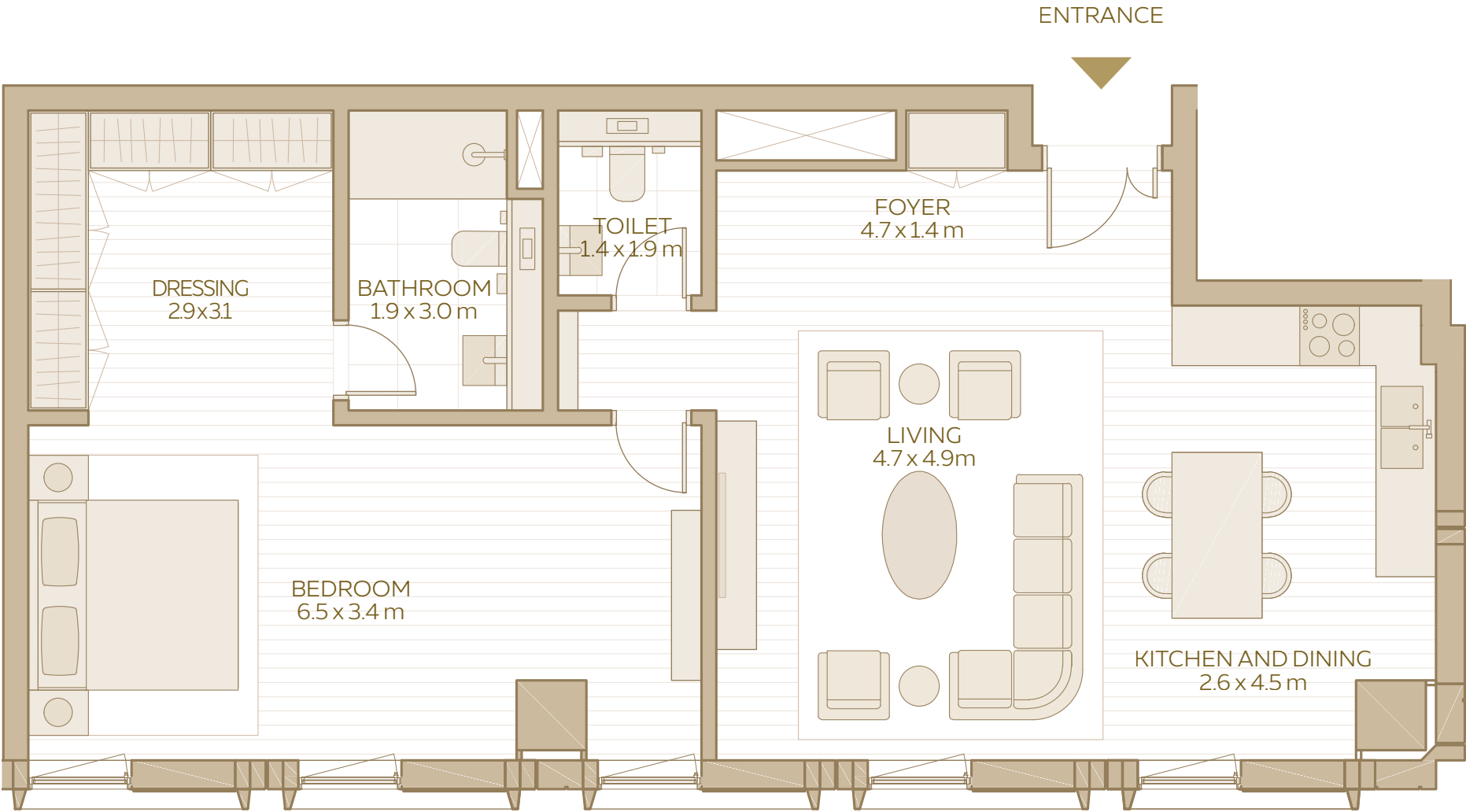


1-BEDROOM  
APARTMENT  
TYPE 7

TOTAL AREA:  
86.57 SQM / 931.83 SQFT

AREA RANGE:  
86.21 SQM - 86.59 SQM  
927.96 SQFT - 932.05 SQFT

1-BEDROOM APARTMENT  
(TYPE 8)

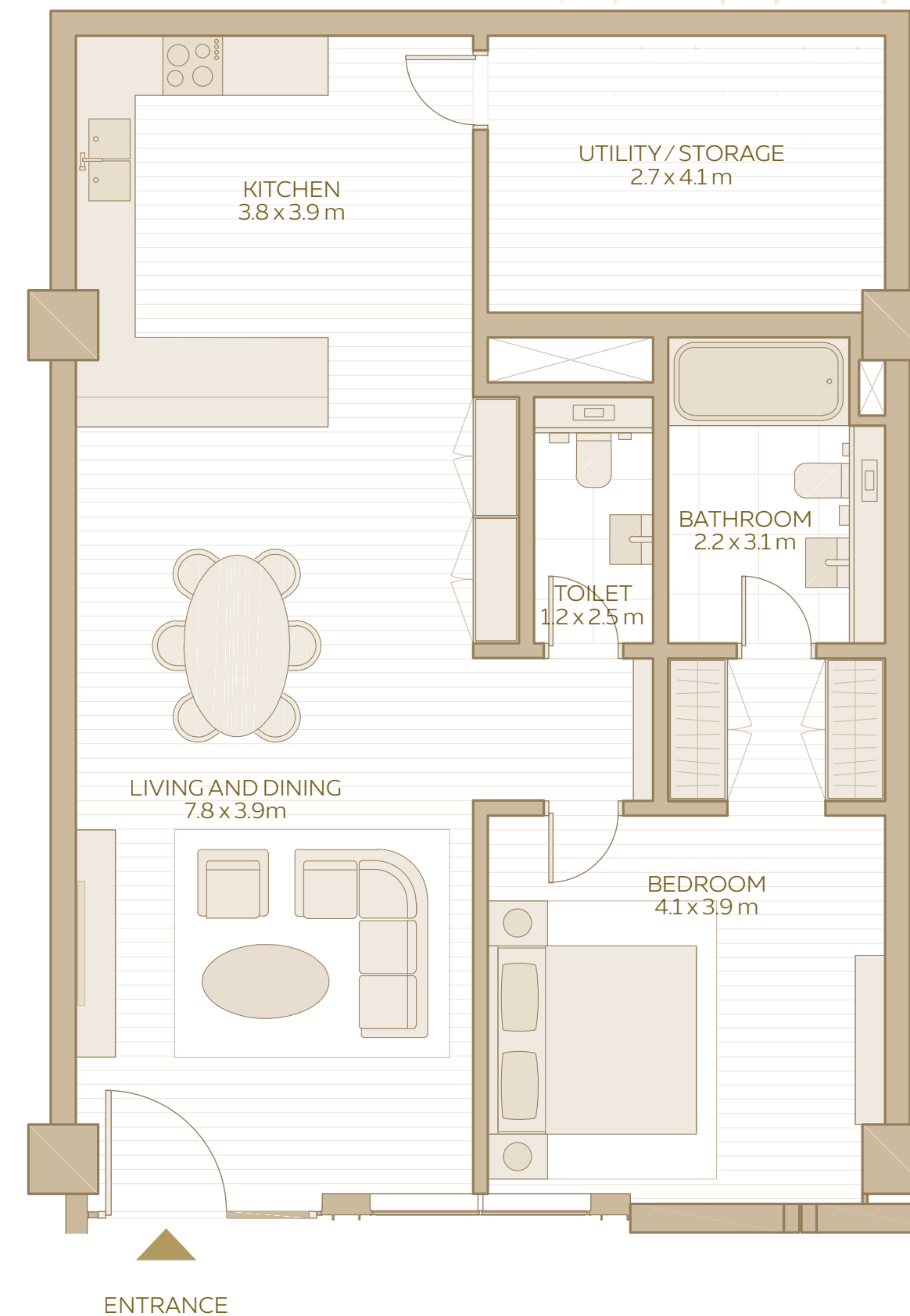


1-BEDROOM  
APARTMENT  
TYPE 8

TOTAL AREA:  
88.24 SQM / 949.81 SQFT

AREA RANGE:  
88.24 SQM - 91.65 SQM  
949.81 SQFT - 986.51 SQFT

# 1-BEDROOM APARTMENT (TYPE 10)



## 1-BEDROOM APARTMENT TYPE 10

**TOTAL AREA:**  
99.06 SQM / 1,066.27 SQFT

**AREA RANGE:**  
99.06 SQM - 103.38 SQM  
1,066.27 SQFT - 1,112.77 SQFT

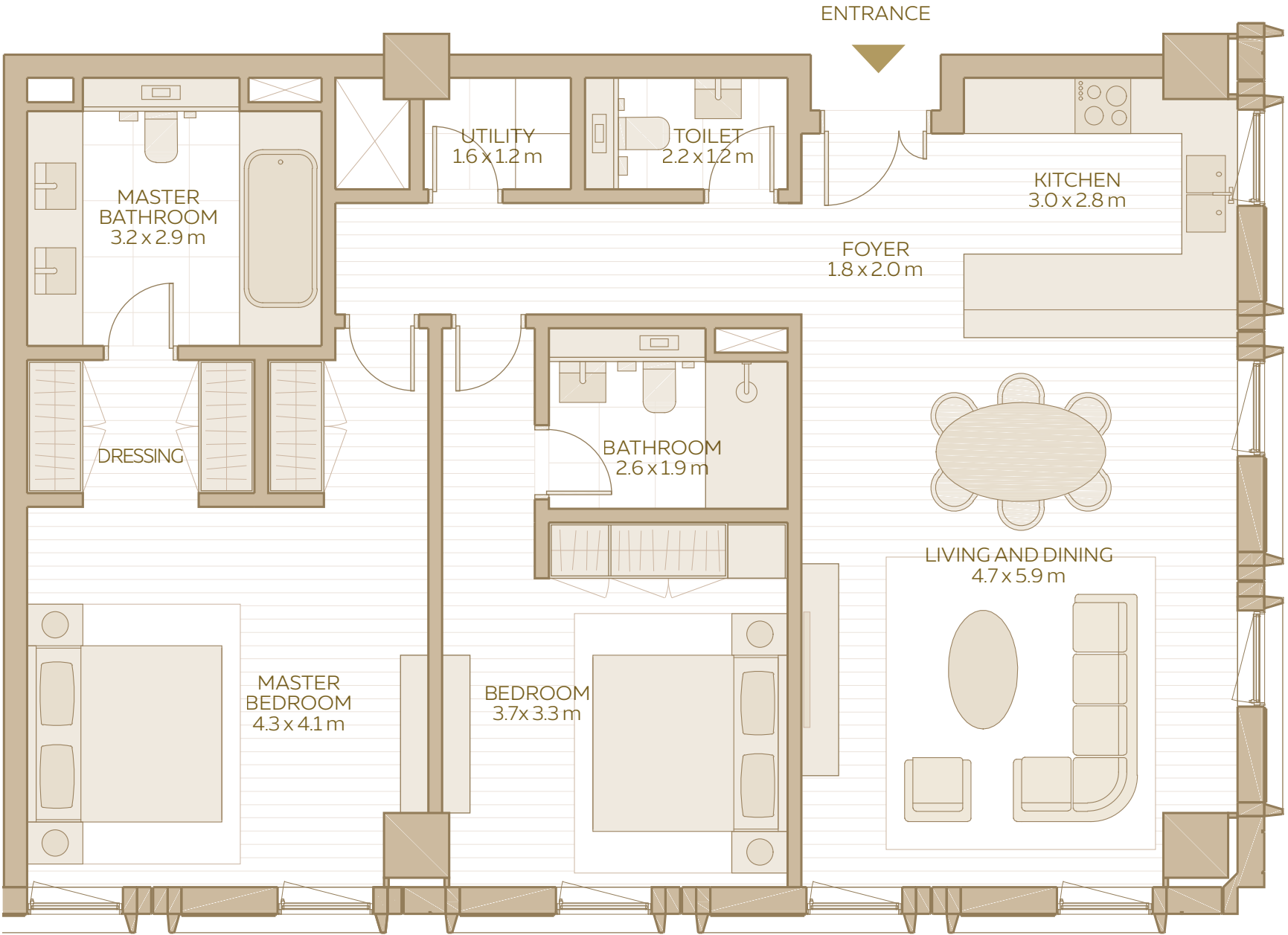


DISCLAIMER: 1. All room dimensions are in metres to the nearest decimal place, measured to structural elements, and exclude wall finishes and construction tolerances. 2. All dimensions have been provided by our consultant architects. 3. Areas are exclusive of partition walls, risers and terraces. 4. All materials, dimensions, drawings, features and amenities are approximate at the time of printing. 5. Actual area may vary from stated area. 6. Drawings not to scale E&OE. 7. Unit plans may exist in mirrored versions. 8. The developer reserves the right to make revisions to the floor plans and any features, materials, dimensions, drawings and amenities mentioned on this plan and in the brochure without notice.

AL WAHA

16 - UNIT PLANS

2-BEDROOM APARTMENT  
(TYPE 1)

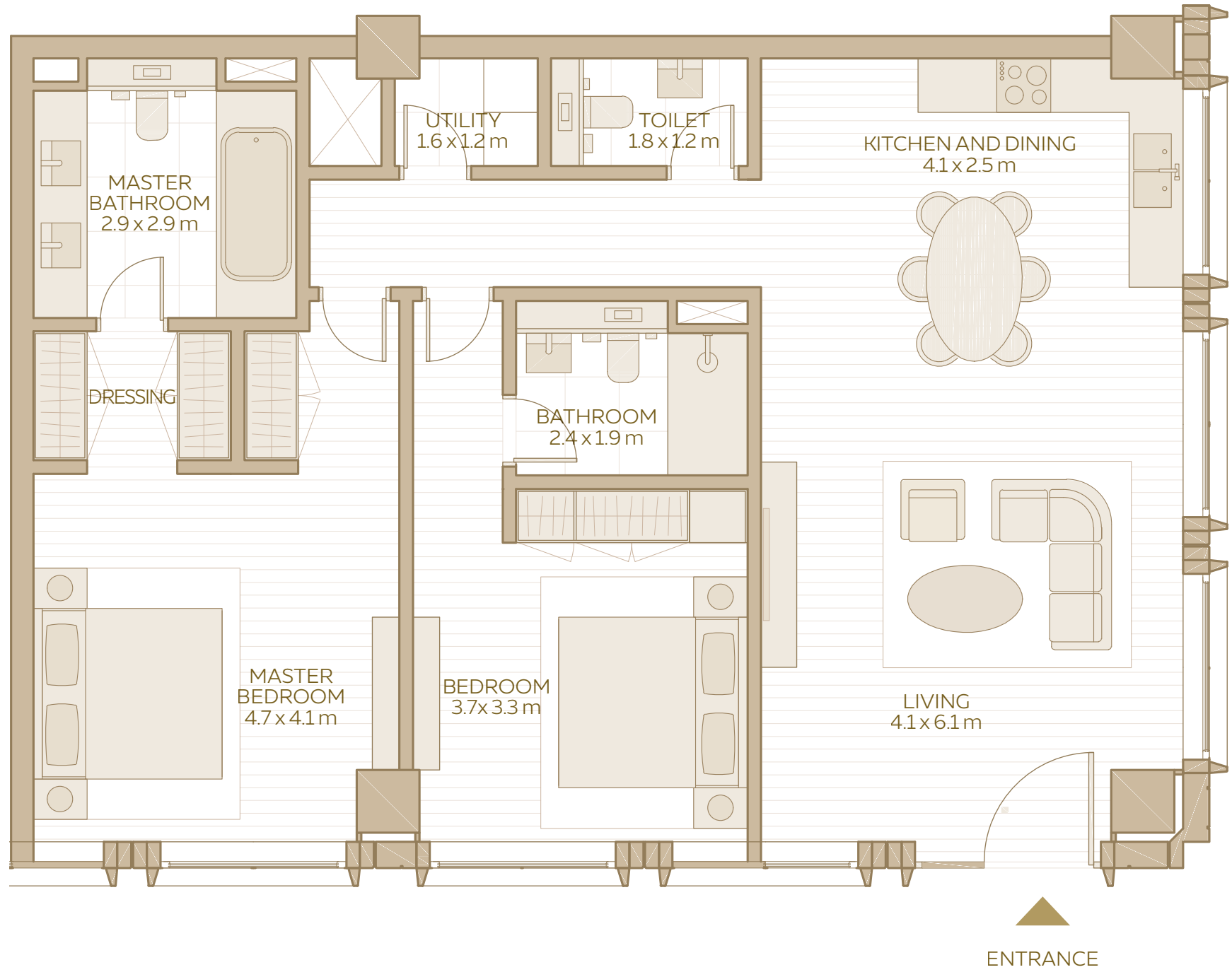


2-BEDROOM  
APARTMENT  
TYPE 1

TOTAL AREA:  
116.99 SQM / 1,259.27 SQFT

AREA RANGE:  
109.09 SQM - 116.99 SQM  
1,174.23 SQFT - 1,259.27 SQFT

2-BEDROOM APARTMENT  
(TYPE 2)

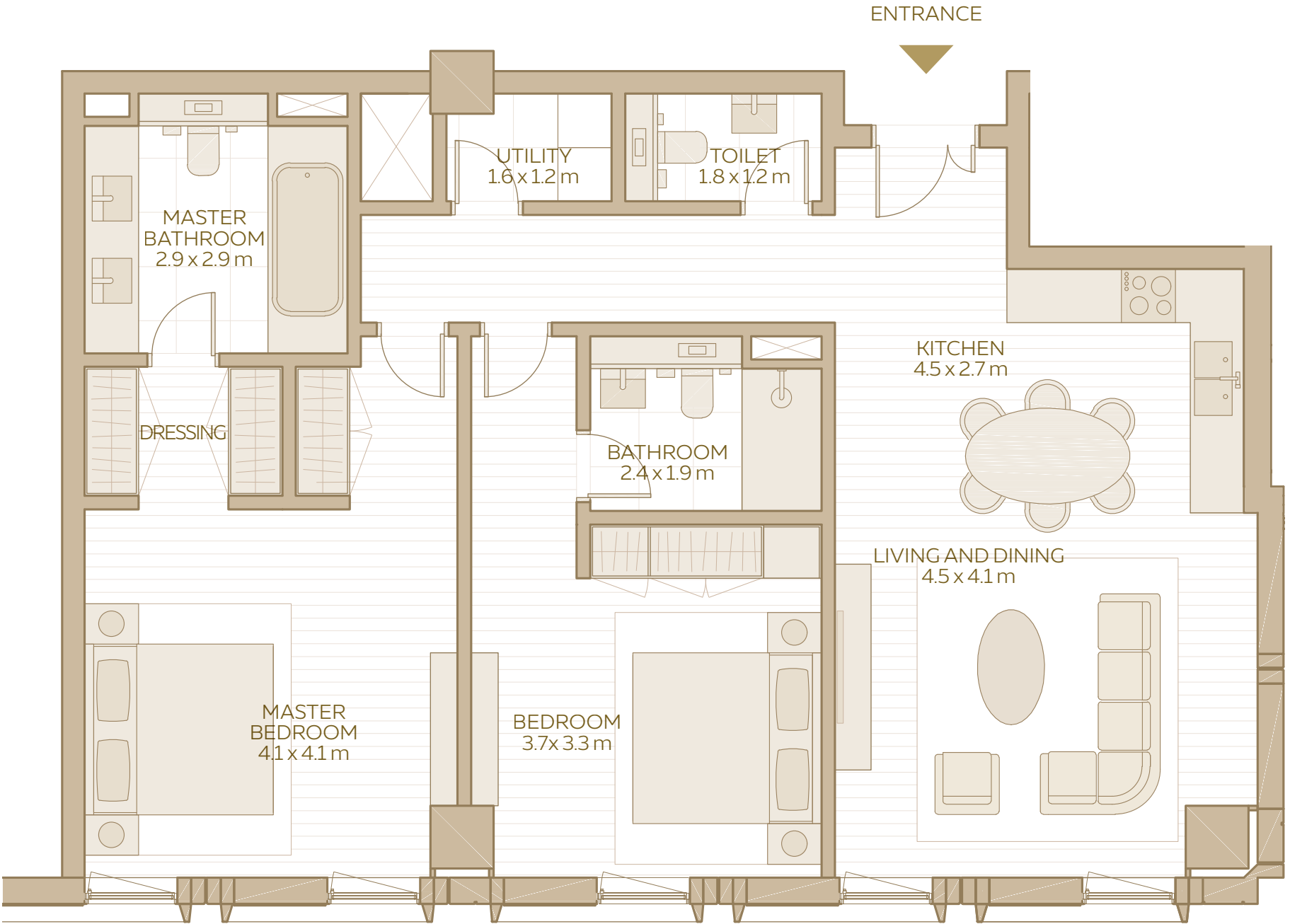


2-BEDROOM  
APARTMENT  
TYPE 2

TOTAL AREA:  
118.03 SQM / 1,270.46 SQFT

AREA RANGE:  
111.27 SQM - 118.03 SQM  
1,197.70 SQFT - 1,270.46 SQFT

2-BEDROOM APARTMENT  
(TYPE 3)



2-BEDROOM  
APARTMENT  
TYPE 3

TOTAL AREA:  
108.33 SQM / 1,166.05 SQFT

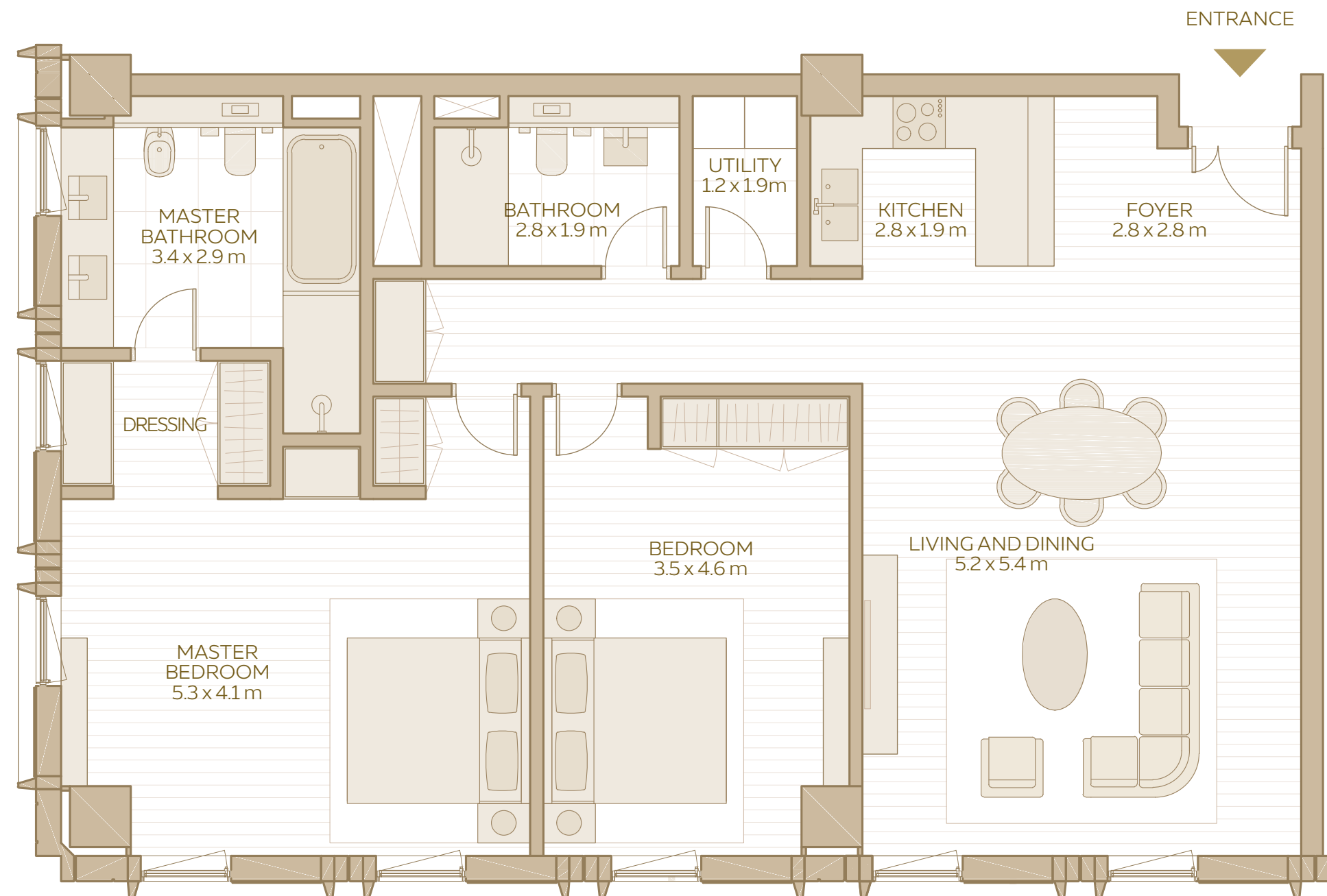


DISCLAIMER: 1. All room dimensions are in metres to the nearest decimal place, measured to structural elements, and exclude wall finishes and construction tolerances. 2. All dimensions have been provided by our consultant architects. 3. Areas are exclusive of partition walls, risers and terraces. 4. All materials, dimensions, drawings, features and amenities are approximate at the time of printing. 5. Actual area may vary from stated area. 6. Drawings not to scale E&OE. 7. Unit plans may exist in mirrored versions. 8. The developer reserves the right to make revisions to the floor plans and any features, materials, dimensions, drawings and amenities mentioned on this plan and in the brochure without notice.

AL WAHA

19 – UNIT PLANS

## 2-BEDROOM APARTMENT (TYPE 4)



## 2-BEDROOM APARTMENT TYPE 4

**TOTAL AREA:**  
127.70 SQM / 1,374.55 SQFT

**AREA RANGE:**  
127.70 SQM - 127.72 SQM  
1,374.55 SQFT - 1,374.77 SQFT

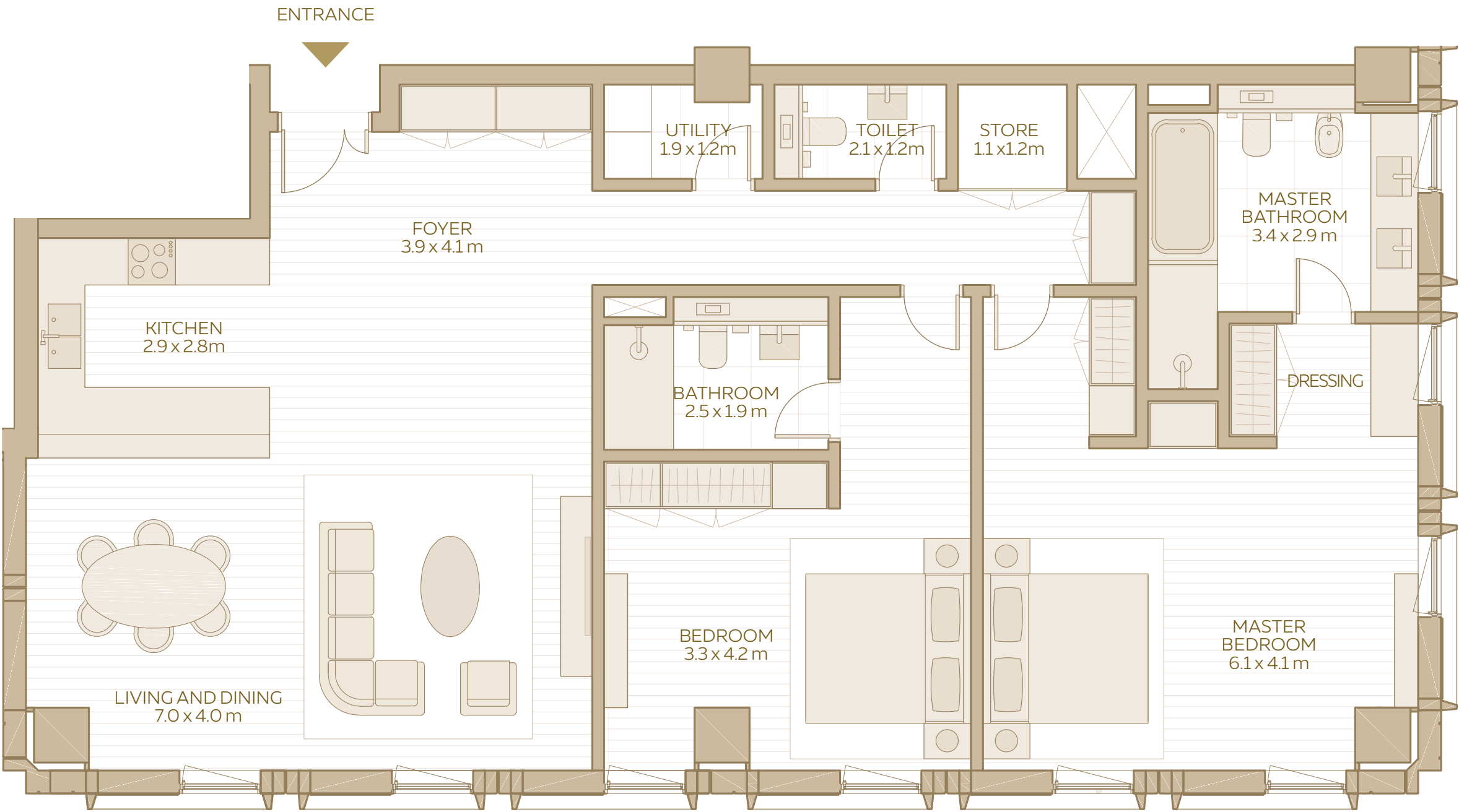


DISCLAIMER: 1. All room dimensions are in metres to the nearest decimal place, measured to structural elements, and exclude wall finishes and construction tolerances. 2. All dimensions have been provided by our consultant architects. 3. Areas are exclusive of partition walls, risers and terraces. 4. All materials, dimensions, drawings, features and amenities are approximate at the time of printing. 5. Actual area may vary from stated area. 6. Drawings not to scale E&OE. 7. Unit plans may exist in mirrored versions. 8. The developer reserves the right to make revisions to the floor plans and any features, materials, dimensions, drawings and amenities mentioned on this plan and in the brochure without notice.

AL WAHA

20 - UNIT PLANS

2-BEDROOM APARTMENT  
(TYPE 5)



2-BEDROOM  
APARTMENT  
TYPE 5

TOTAL AREA:  
153.30 SQM / 1,650.11 SQFT

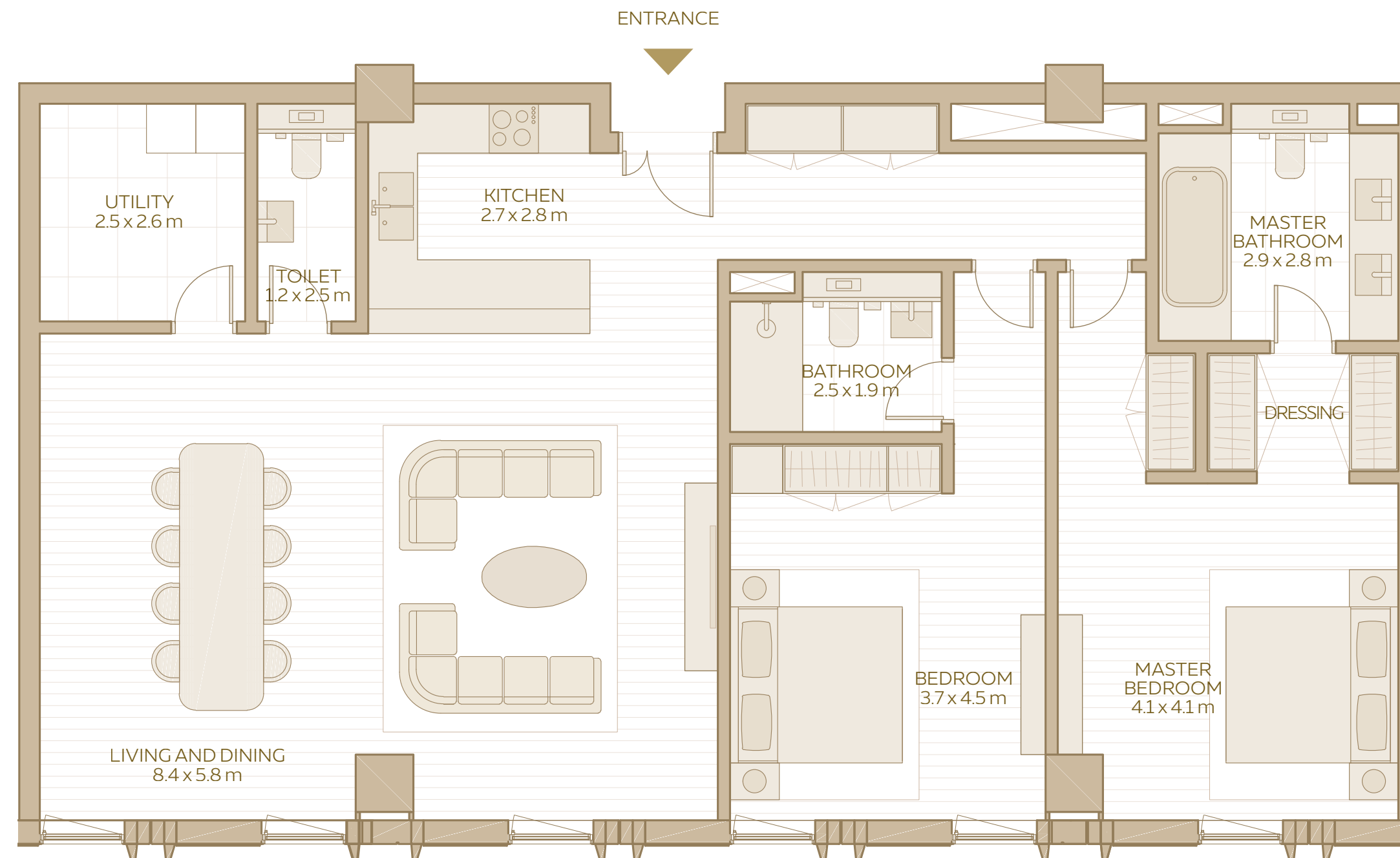


DISCLAIMER: 1. All room dimensions are in metres to the nearest decimal place, measured to structural elements, and exclude wall finishes and construction tolerances. 2. All dimensions have been provided by our consultant architects. 3. Areas are exclusive of partition walls, risers and terraces. 4. All materials, dimensions, drawings, features and amenities are approximate at the time of printing. 5. Actual area may vary from stated area. 6. Drawings not to scale E&OE. 7. Unit plans may exist in mirrored versions. 8. The developer reserves the right to make revisions to the floor plans and any features, materials, dimensions, drawings and amenities mentioned on this plan and in the brochure without notice.

AL WAHA

21 – UNIT PLANS

## 2-BEDROOM APARTMENT (TYPE 7)



## 2-BEDROOM APARTMENT TYPE 7

**TOTAL AREA:**  
146.19 SQM / 1,573.58 SQFT

**AREA RANGE:**  
146.19 SQM - 147.90 SQM  
1,573.58 SQFT - 1,591.98 SQFT

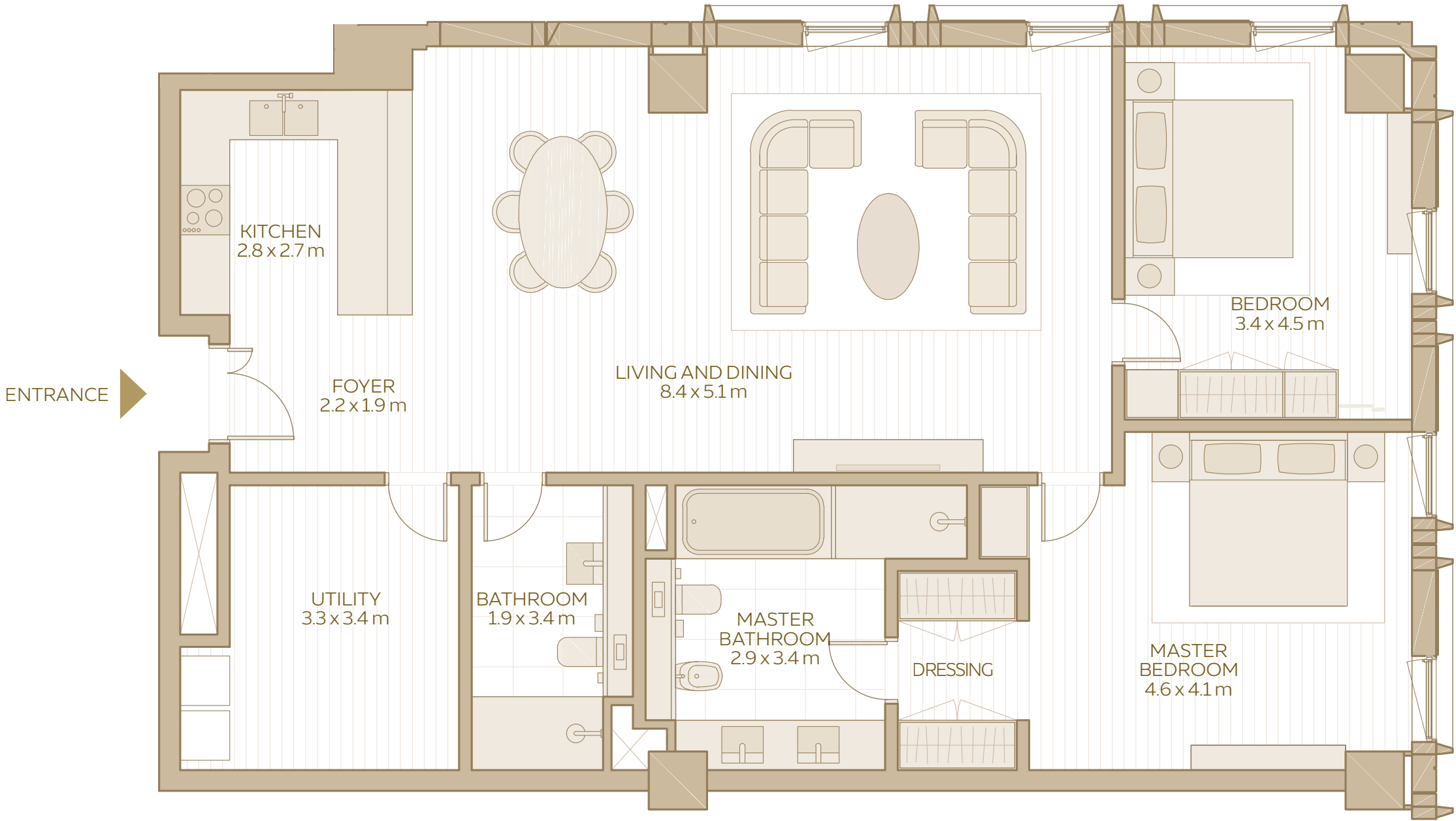


DISCLAIMER: 1. All room dimensions are in metres to the nearest decimal place, measured to structural elements, and exclude wall finishes and construction tolerances. 2. All dimensions have been provided by our consultant architects. 3. Areas are exclusive of partition walls, risers and terraces. 4. All materials, dimensions, drawings, features and amenities are approximate at the time of printing. 5. Actual area may vary from stated area. 6. Drawings not to scale E&OE. 7. Unit plans may exist in mirrored versions. 8. The developer reserves the right to make revisions to the floor plans and any features, materials, dimensions, drawings and amenities mentioned on this plan and in the brochure without notice.

AL WAHA

22 – UNIT PLANS

2-BEDROOM APARTMENT  
(TYPE 8)

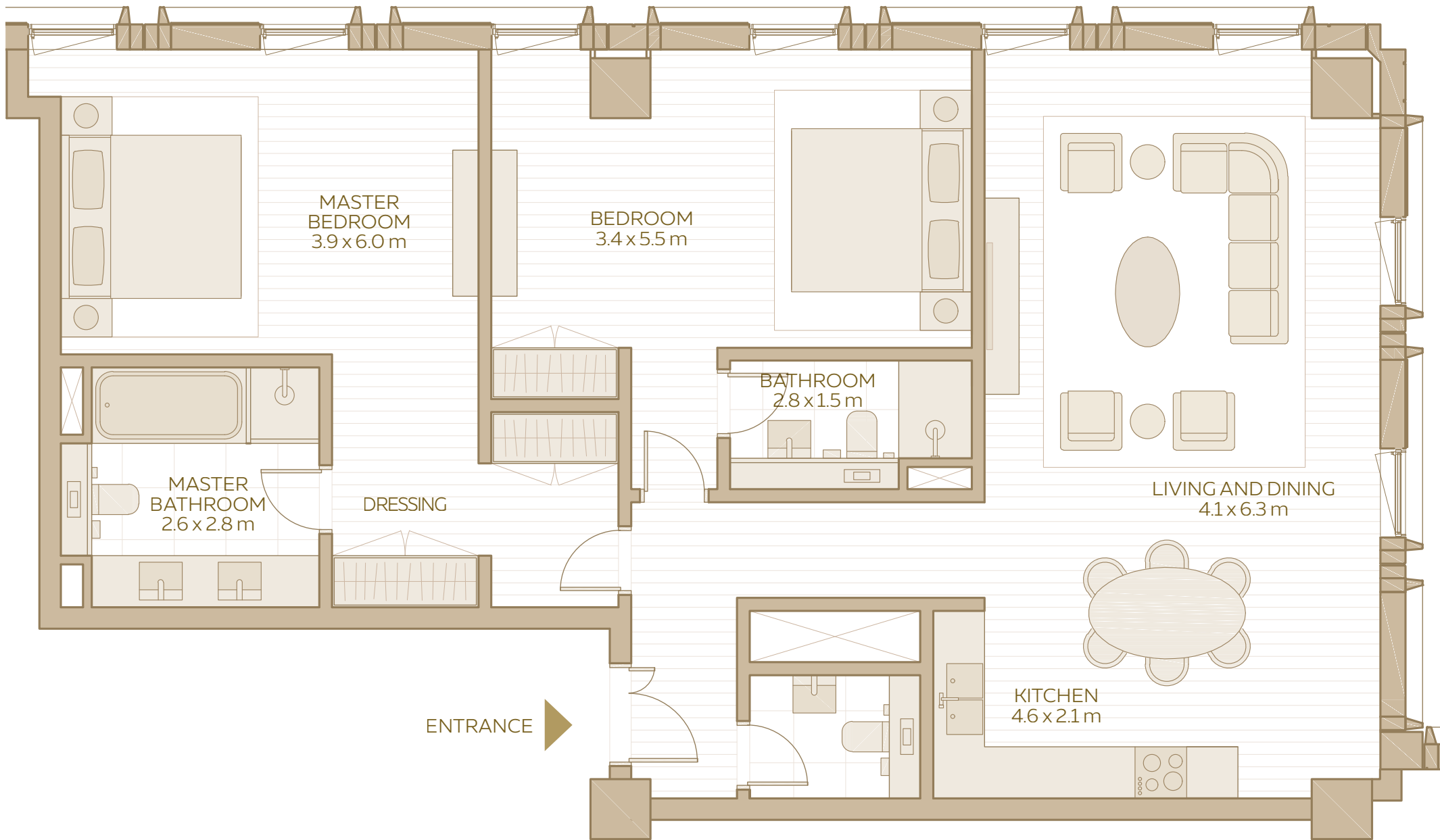


2-BEDROOM  
APARTMENT  
TYPE 8

TOTAL AREA:  
131.90 SQM / 1,419.76 SQFT

AREA RANGE:  
126.40 SQM - 131.90 SQM  
1,360.56 SQFT - 1,419.76 SQFT

2-BEDROOM APARTMENT  
(TYPE 9)

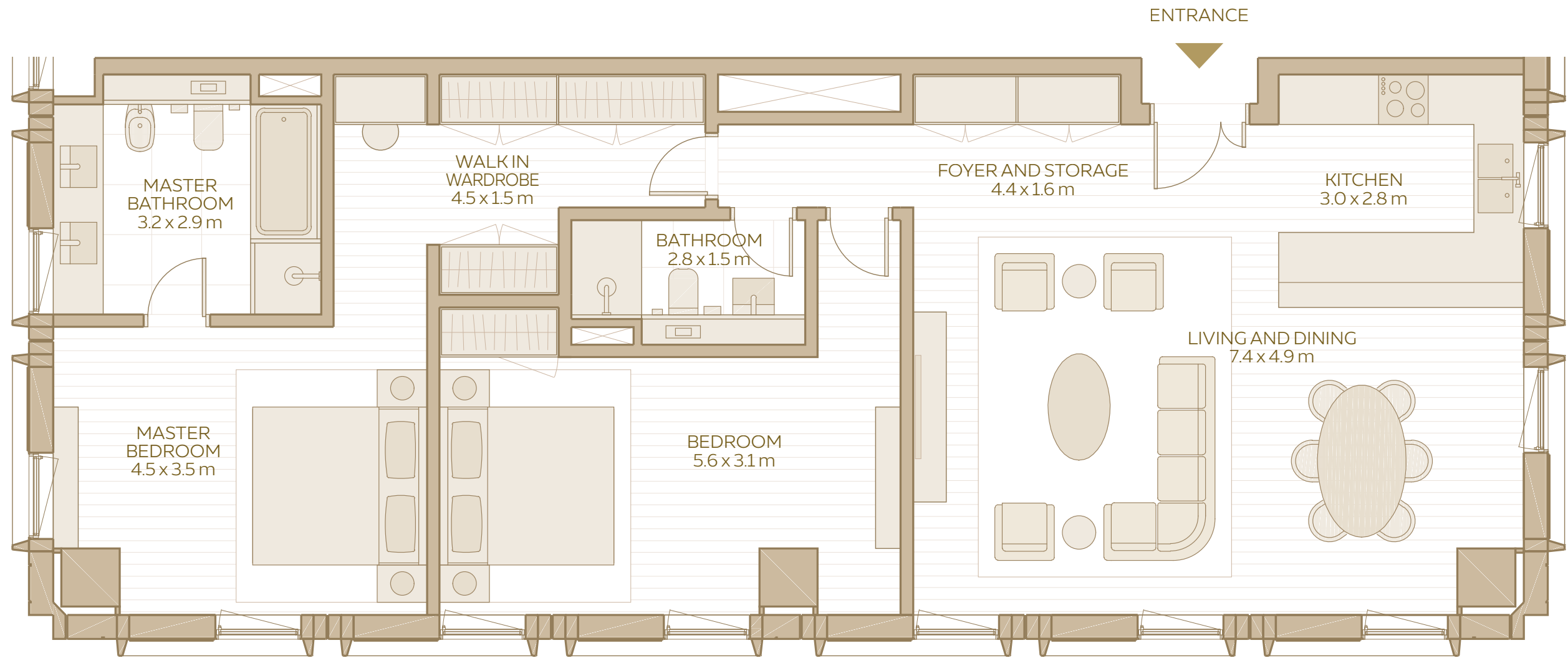


2-BEDROOM  
APARTMENT  
TYPE 9

TOTAL AREA:  
124.23 SQM / 1,337.20 SQFT

AREA RANGE:  
122.44 SQM - 125.17 SQM  
1,317.93 SQFT - 1,347.32 SQFT

2-BEDROOM APARTMENT  
(TYPE 10)



2-BEDROOM  
APARTMENT  
TYPE 10

TOTAL AREA:  
118.91 SQM / 1,279.94 SQFT

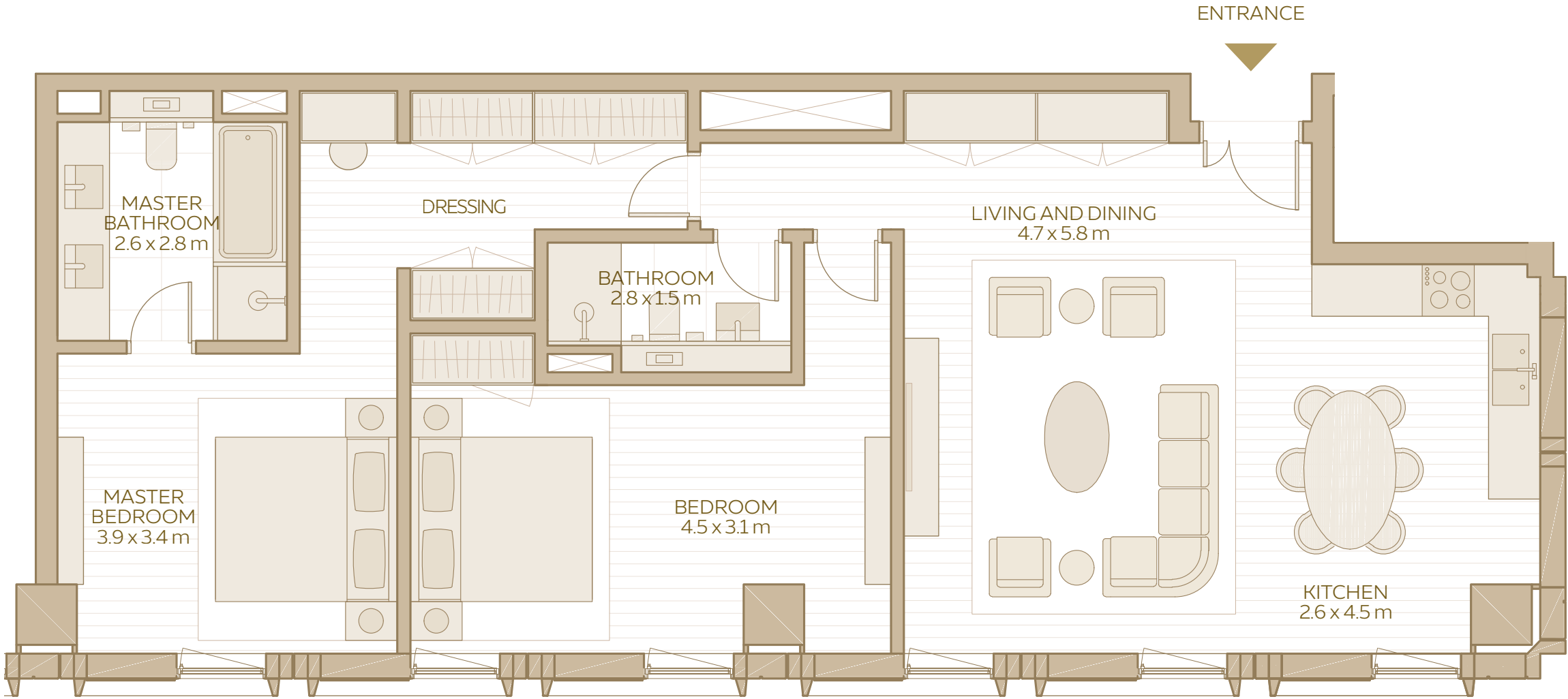
AREA RANGE:  
118.91 SQM - 128.67 SQM  
1,279.94 SQFT - 1384.99 SQFT

2-BEDROOM APARTMENT  
(TYPE 11)

2-BEDROOM  
APARTMENT  
TYPE 11

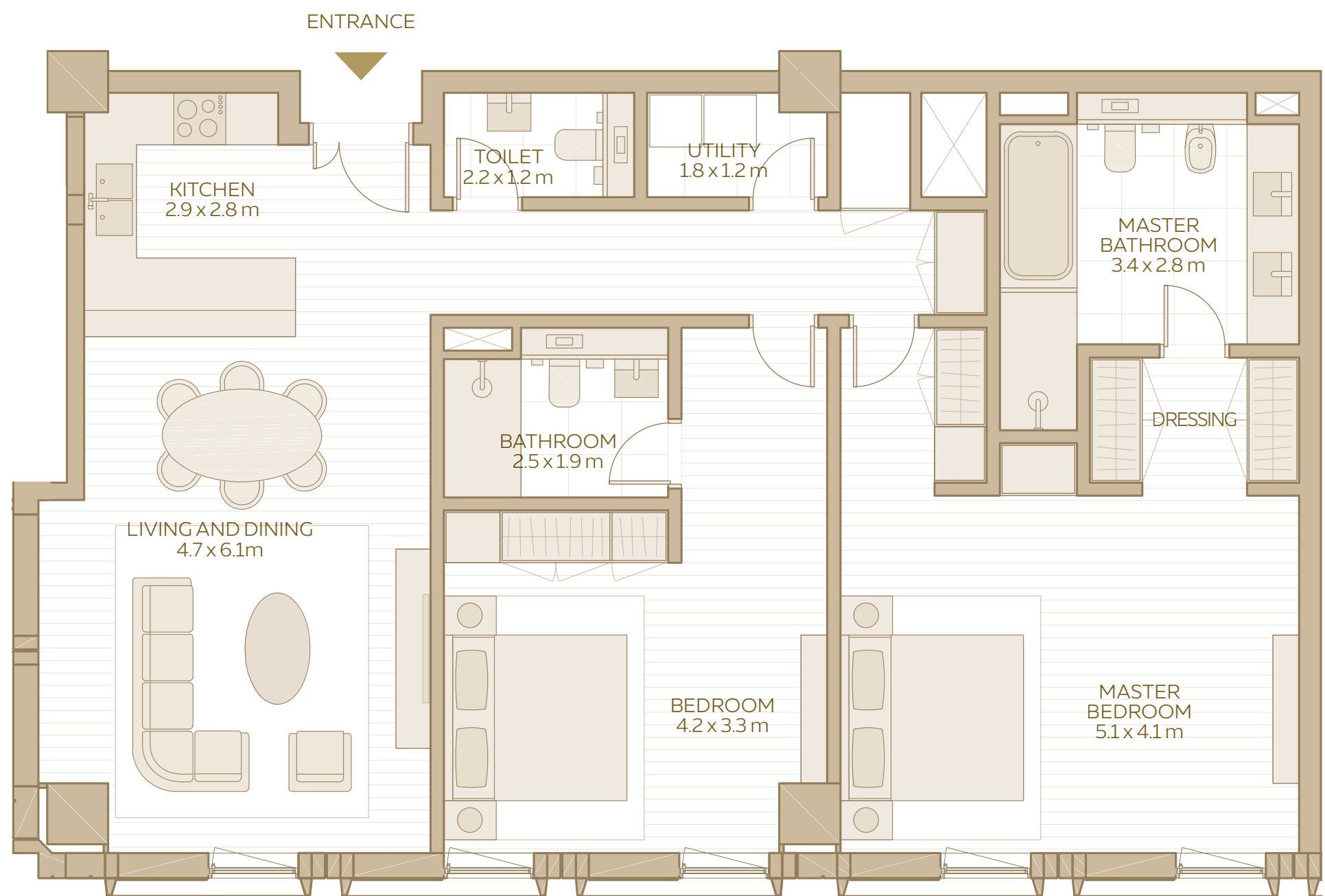
TOTAL AREA:  
109.01 SQM / 1,173.37 SQFT

AREA RANGE:  
109.01 SQM - 114.52 SQM  
1,173.37 SQFT - 1,232.68 SQFT



DISCLAIMER: 1. All room dimensions are in metres to the nearest decimal place, measured to structural elements, and exclude wall finishes and construction tolerances. 2. All dimensions have been provided by our consultant architects. 3. Areas are exclusive of partition walls, risers and terraces. 4. All materials, dimensions, drawings, features and amenities are approximate at the time of printing. 5. Actual area may vary from stated area. 6. Drawings not to scale E&OE. 7. Unit plans may exist in mirrored versions. 8. The developer reserves the right to make revisions to the floor plans and any features, materials, dimensions, drawings and amenities mentioned on this plan and in the brochure without notice.

2-BEDROOM APARTMENT  
(TYPE 12)

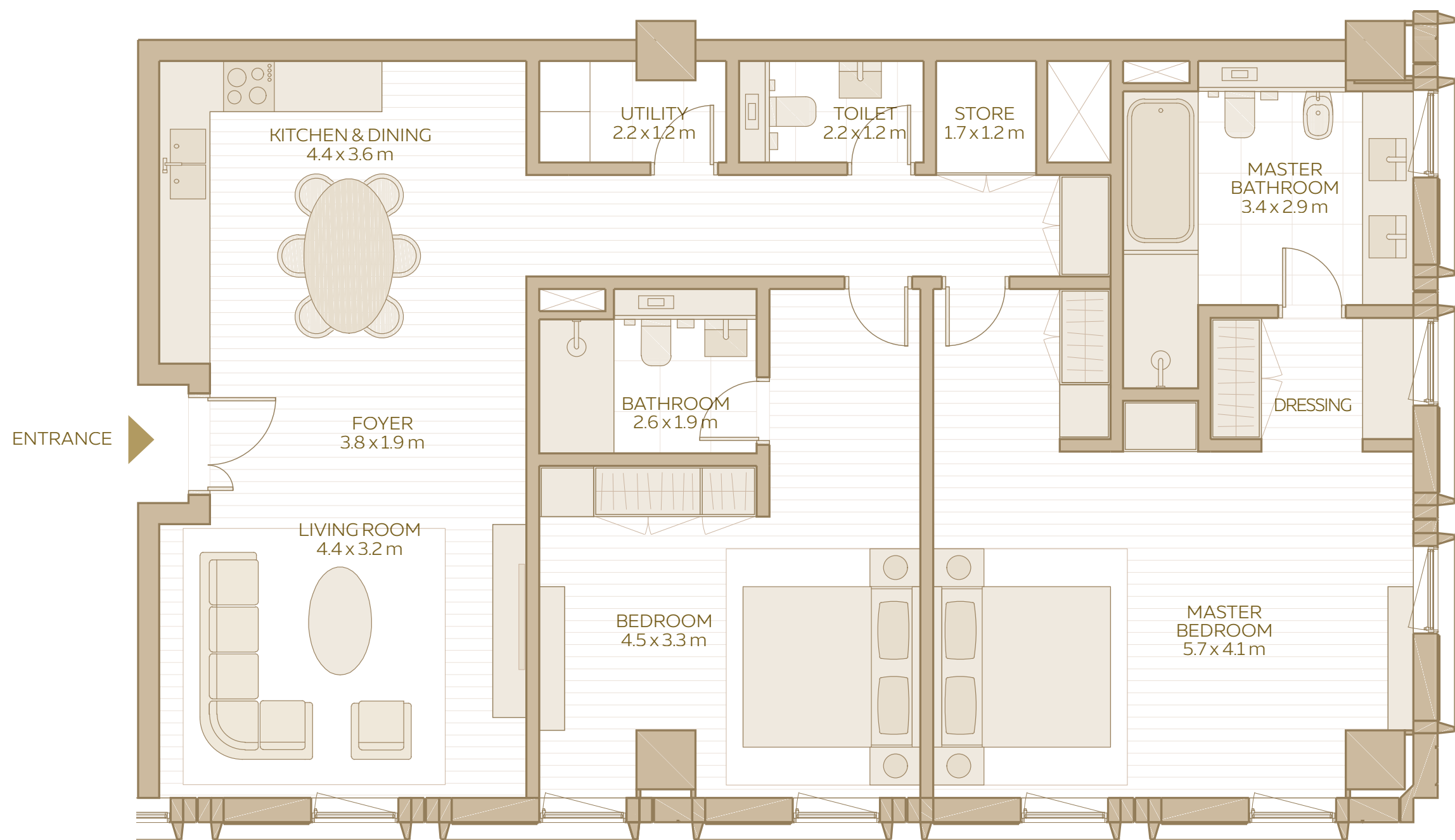


2-BEDROOM  
APARTMENT  
TYPE 12

TOTAL AREA:  
128.17 SQM / 1,379.61 SQFT

AREA RANGE:  
128.17 SQM - 128.64 SQM  
1,379.61 SQFT - 1,384.67 SQFT

2-BEDROOM APARTMENT  
(TYPE 13)

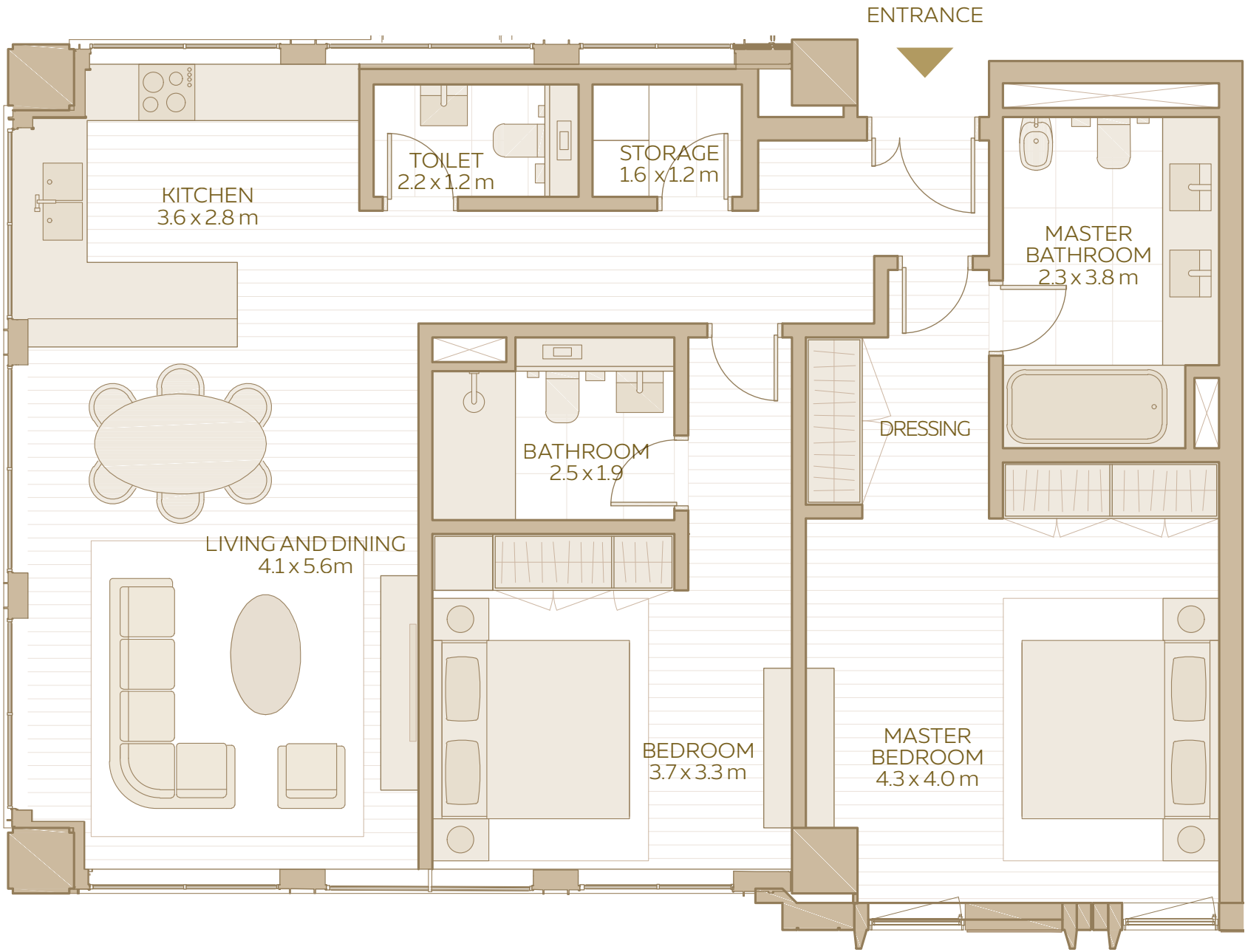


2-BEDROOM  
APARTMENT  
TYPE 13

**TOTAL AREA:**  
133.86 SQM / 1,440.86 SQFT

**AREA RANGE:**  
133.03 SQM - 133.86 SQM  
1,431.92 SQFT - 1,440.86 SQFT

2-BEDROOM APARTMENT  
(TYPE 14)



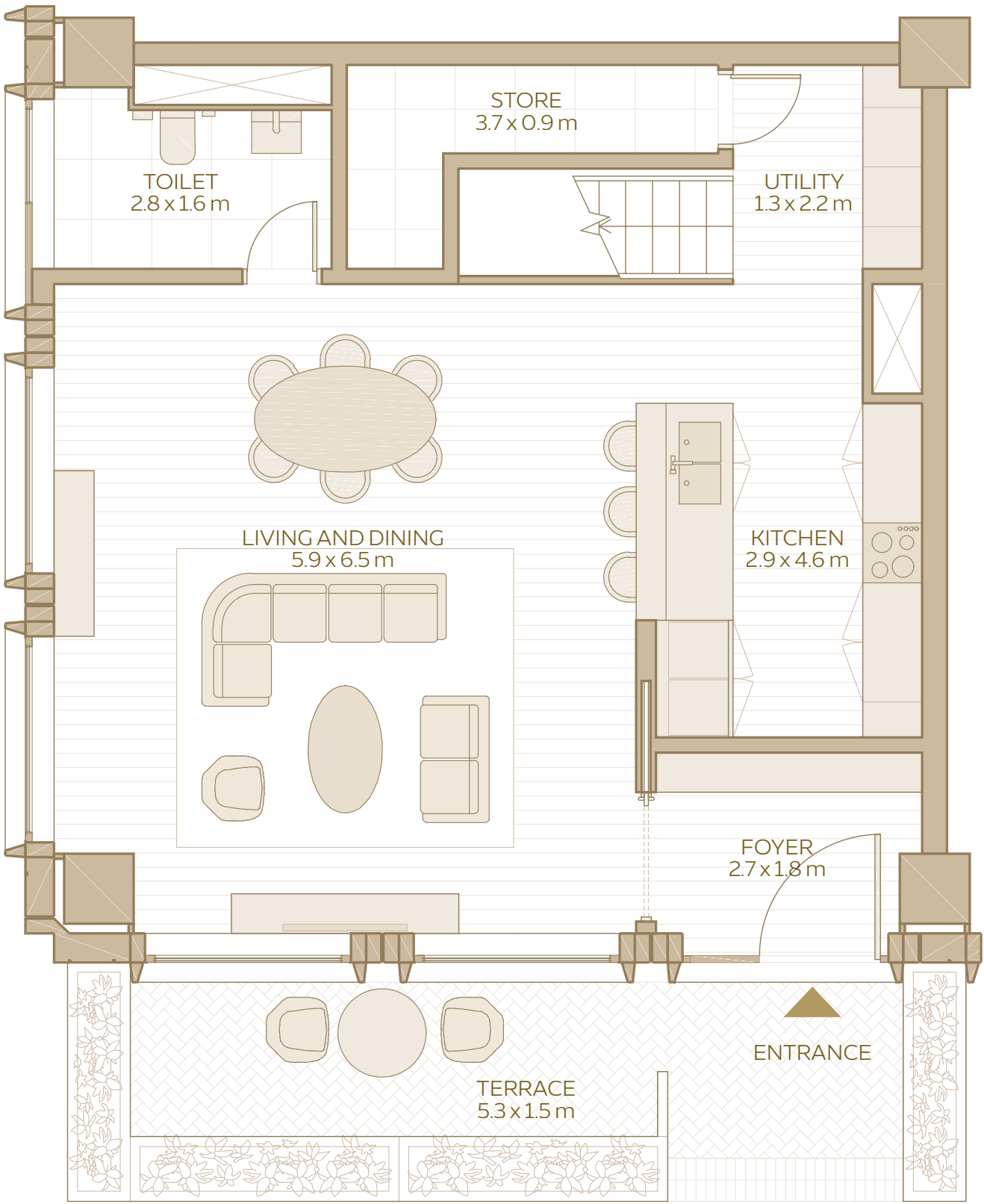
2-BEDROOM  
APARTMENT  
TYPE 14

TOTAL AREA:  
113.22 SQM / 1,218.69 SQFT

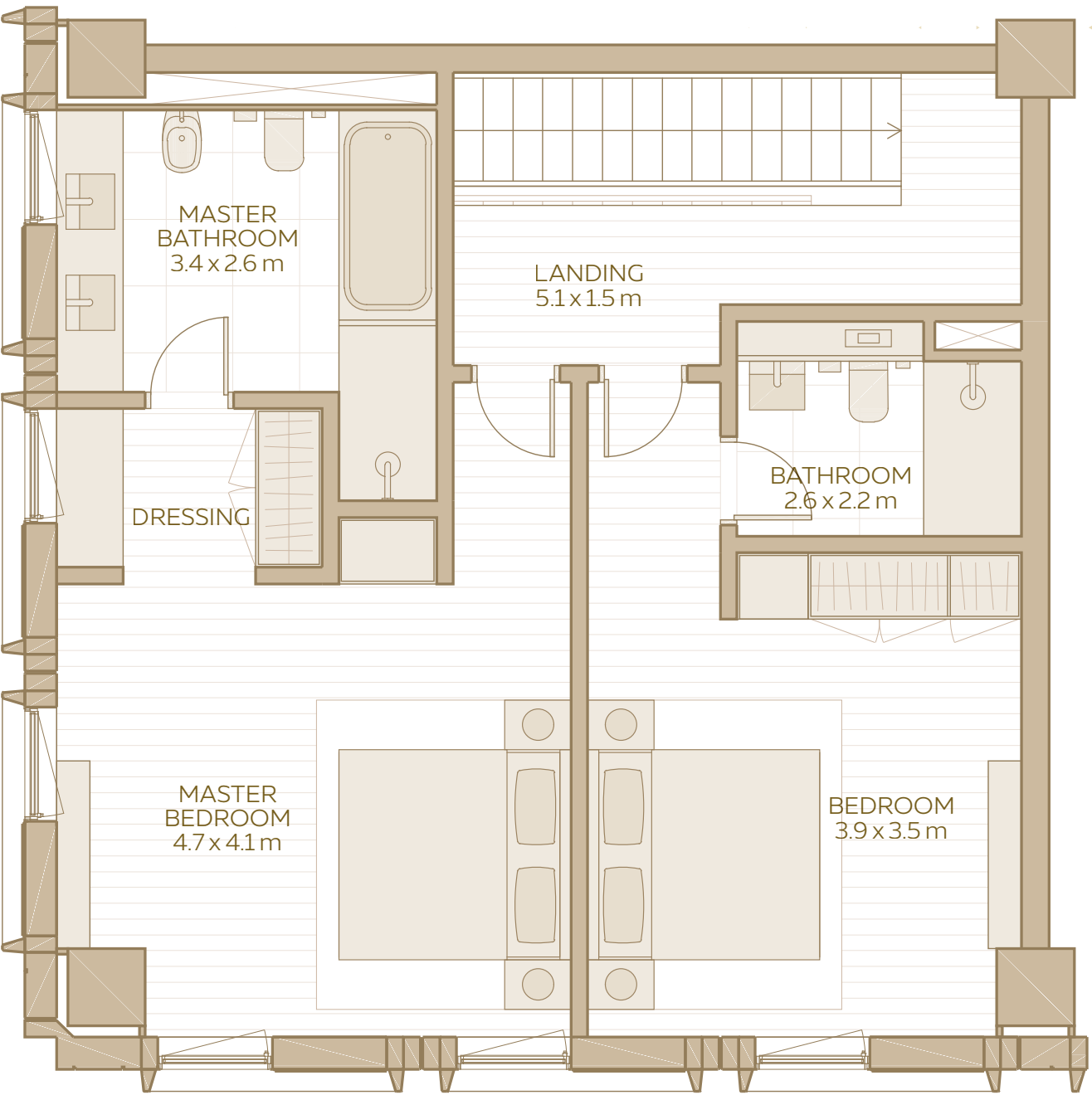
AREA RANGE:  
113.22 SQM - 113.43 SQM  
1,218.69 SQFT - 1,220.95 SQFT

2-BEDROOM LOFT  
(TYPE 1)

GROUND FLOOR



FIRST FLOOR



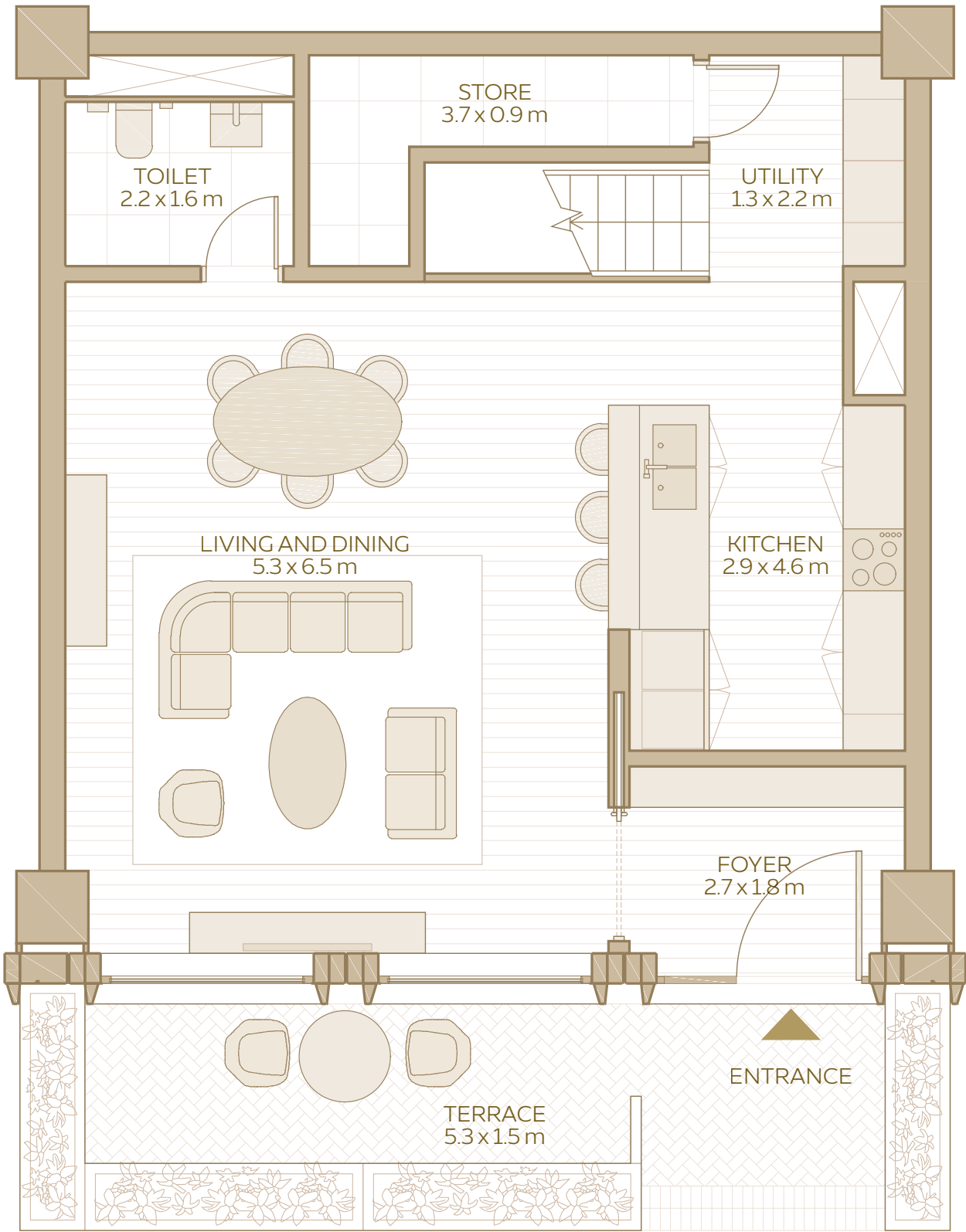
2-BEDROOM  
LOFT  
TYPE 1

TOTAL AREA:  
158.10 SQM / 1,701.77 SQFT

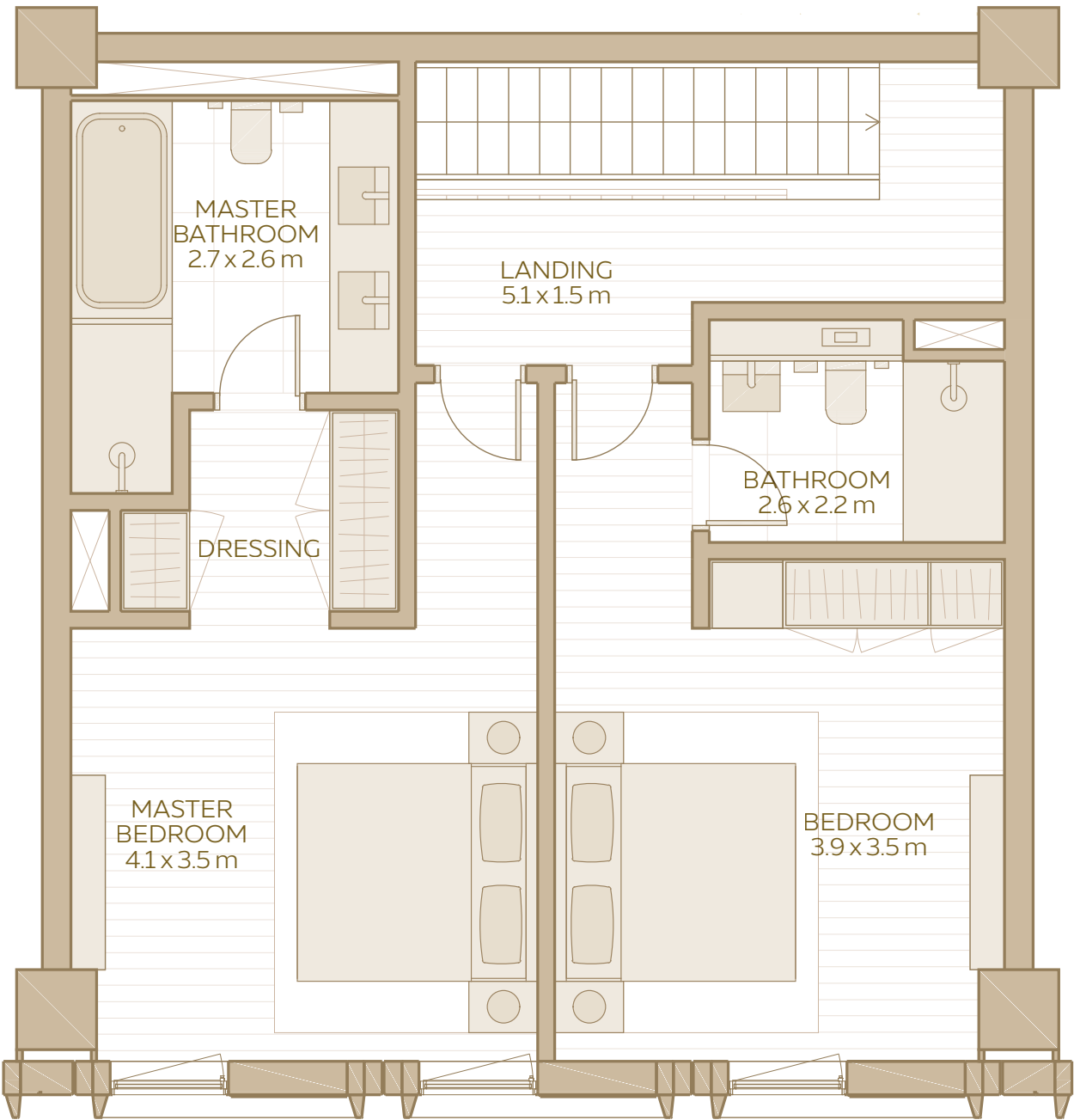
AREA RANGE:  
158.10 SQM - 158.79 SQM  
1,701.77 SQFT - 1,709.20 SQFT

2-BEDROOM LOFT  
(TYPE 2)

GROUND FLOOR



FIRST FLOOR



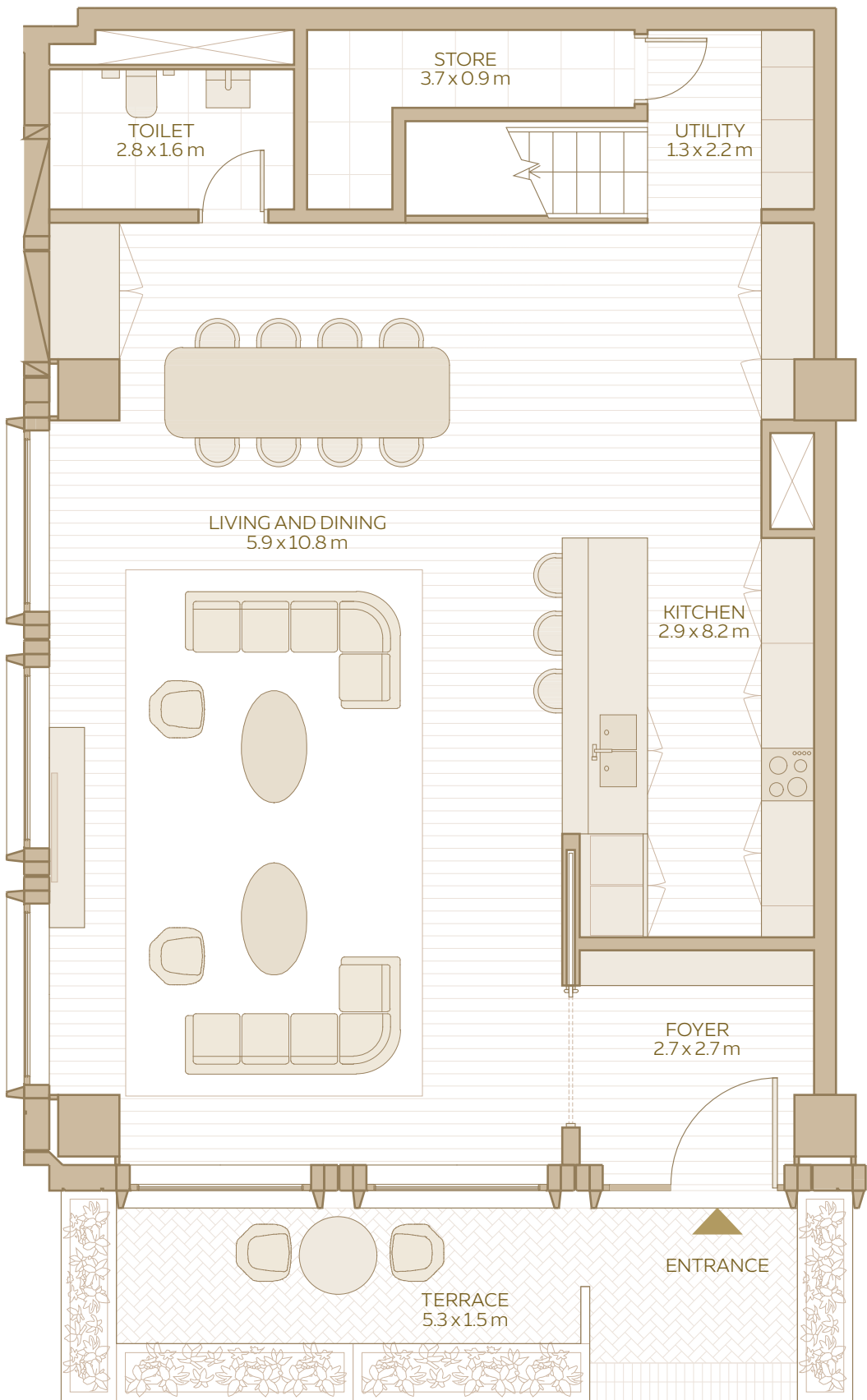
2-BEDROOM  
LOFT  
TYPE 2

TOTAL AREA:  
147.55 SQM / 1,588.21 SQFT

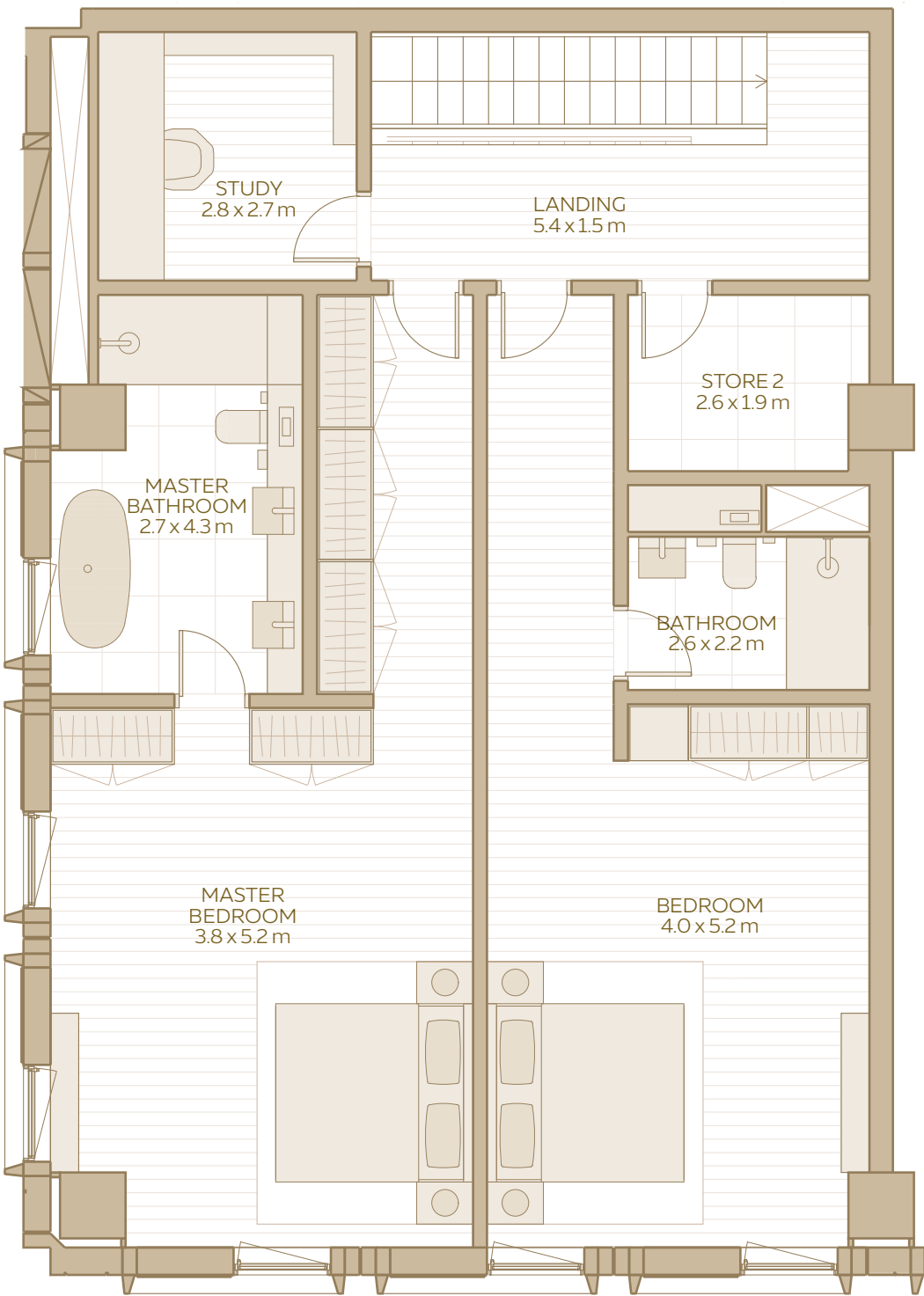
AREA RANGE:  
147.55 SQM - 153.80 SQM  
1,588.21 SQFT - 1,655.49 SQFT

2-BEDROOM LOFT  
(TYPE 3)

GROUND FLOOR



FIRST FLOOR



2-BEDROOM  
LOFT  
TYPE 3

TOTAL AREA:  
231.07 SQM / 2,487.22 SQFT

AREA RANGE:  
223.70 SQM - 231.07 SQM  
2,407.89 SQFT - 2,487.22 SQFT



**housebook** Real Estate Company  
since 2012 in the UAE

**+971 (4) 412-5007**

Managers of partnerships



Alevtina Kapustina



Svetlana Guseva

## Office

Housebook Real Estate LCC

Dubai Marina, office 2502-01, Dubai, UAE

Company license: 1128098

[ae.housebook.deals](https://ae.housebook.deals)

[partner@housebook.ae](mailto:partner@housebook.ae)

