

BINGHATTI  
Hillside

# Floor Plan

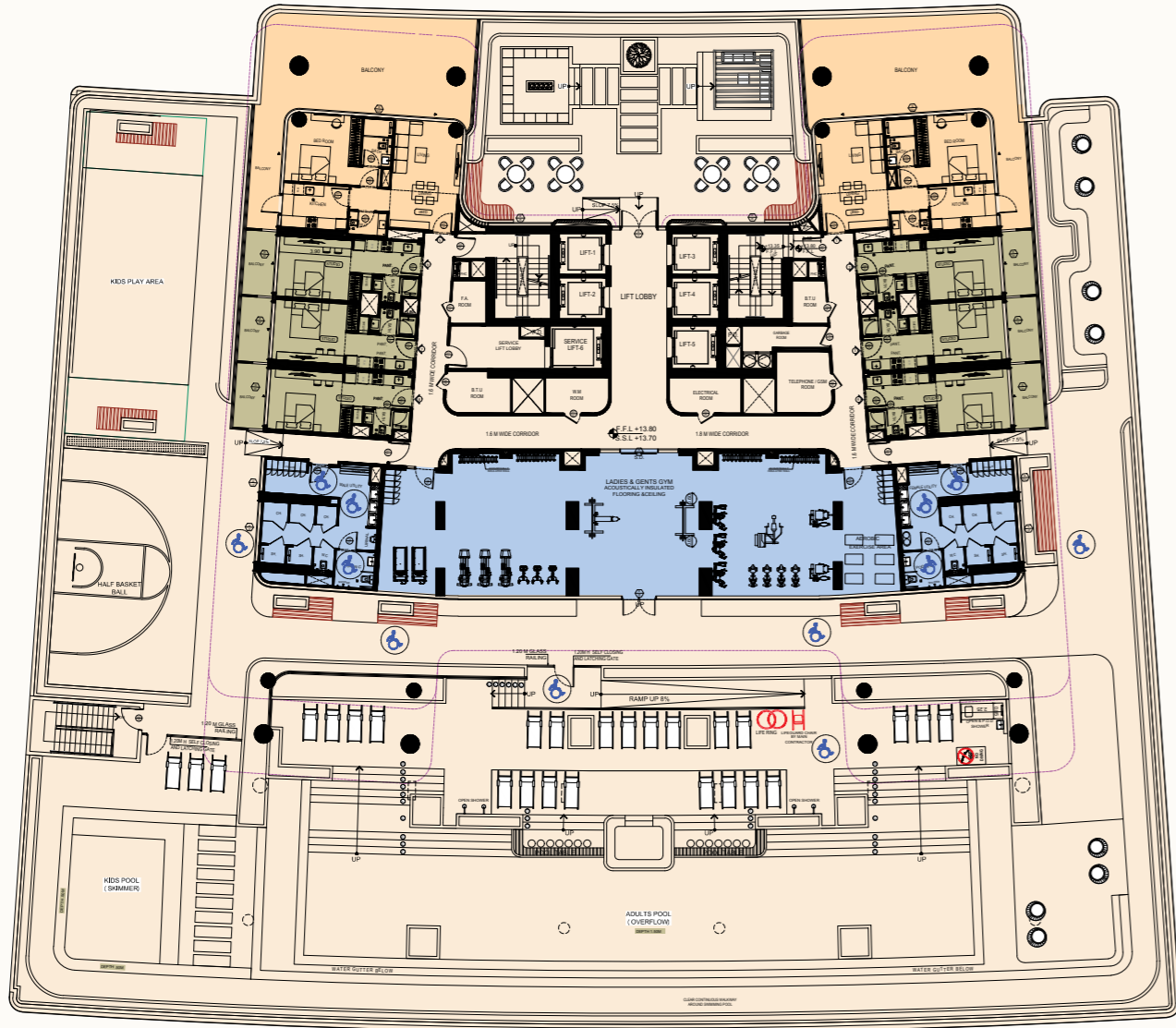
Disclaimer: 1. All room dimensions are measured to structural elements and exclude wall finishes and construction tolerances. 2. All dimensions have been provided by our consultant architects. 3. All materials, dimensions and drawings are approximate. Information is subject to change without notice. 4. Actual suite area may vary from the stated area. Drawings not to scale. The developer reserves the right to make revisions. 5. Calculation of suite area is measured as the area bounded by the centre line of demising or partition walls separating one unit from another unit, the exterior face of all exterior walls, and the exterior face of the corridor wall enclosing the adjoining unit. 6. Calculation of balcony area is measured as the area bounded by the centre line of demising or partition walls separating one unit from another unit, the outmost face of the enclosing guard and the external face of the adjoining balcony. 7. The units are measured at typical floor in the building. Columns may vary in size depending on the floor level. 8. For each unit type, unit sizes and details might be slightly different. Please refer to the sales and purchase agreement for the actual size of each specific unit.

نموذج: 1. إن أبعاد الغرف يتم قياسها طبقاً للعناصر الهيكلية مع استبعادشطيفيات الجدران ودراسة تحمل البناء. 2. جميع القياسات تم تزويدها من قبل المهندسين المعماريين الاستشاريين لدينا. 3. جميع المواد والأبعاد والرسومات تقريبية. لجميع المعلومات للتفسير، فإن أبعاد مسبق. 4. قد تختلف منطقة الدجاج الفعلي عن المساحة المذكورة الرسومات و يتم توسيع نطاقها. 5. يتم قياس حساب منطقة الدجاج كمنطقة الخط المركزي للجدران الفاصلة أو الفاصلة التي تفصل وحدة عن وحدة أخرى. والوجه الخارج في جميع الجدران الخارجية والوجه الخارج في الممر المحيط بالوحدة المجاورة. 6. ويقاس حساب منطقة الشرفة على أتم المنطقة التي تحدها الخط المركزي للجدران الفاصلة أو الفاصلة التي تفصل وحدة عن وحدة أخرى. والوجه الأبعد للخارج من المرفق والوجه الخارج في الشرفة المجاورة. 7. يتم قياس الوحدات في الطابق النموذجي في المبني. قد تختلف الأعمدة في الحجم حسب مستوى الطابق. 8. قد تكون أحجام الوحدات والتفاصيل المتعلقة بها مختلفة وذلك حسب نوع الوحدة. يرجى الرجوع إلى اتفاقية البيع والشراء لمعرفة الحجم الفعلي لكل وحدة.



# Typical Floor Plan

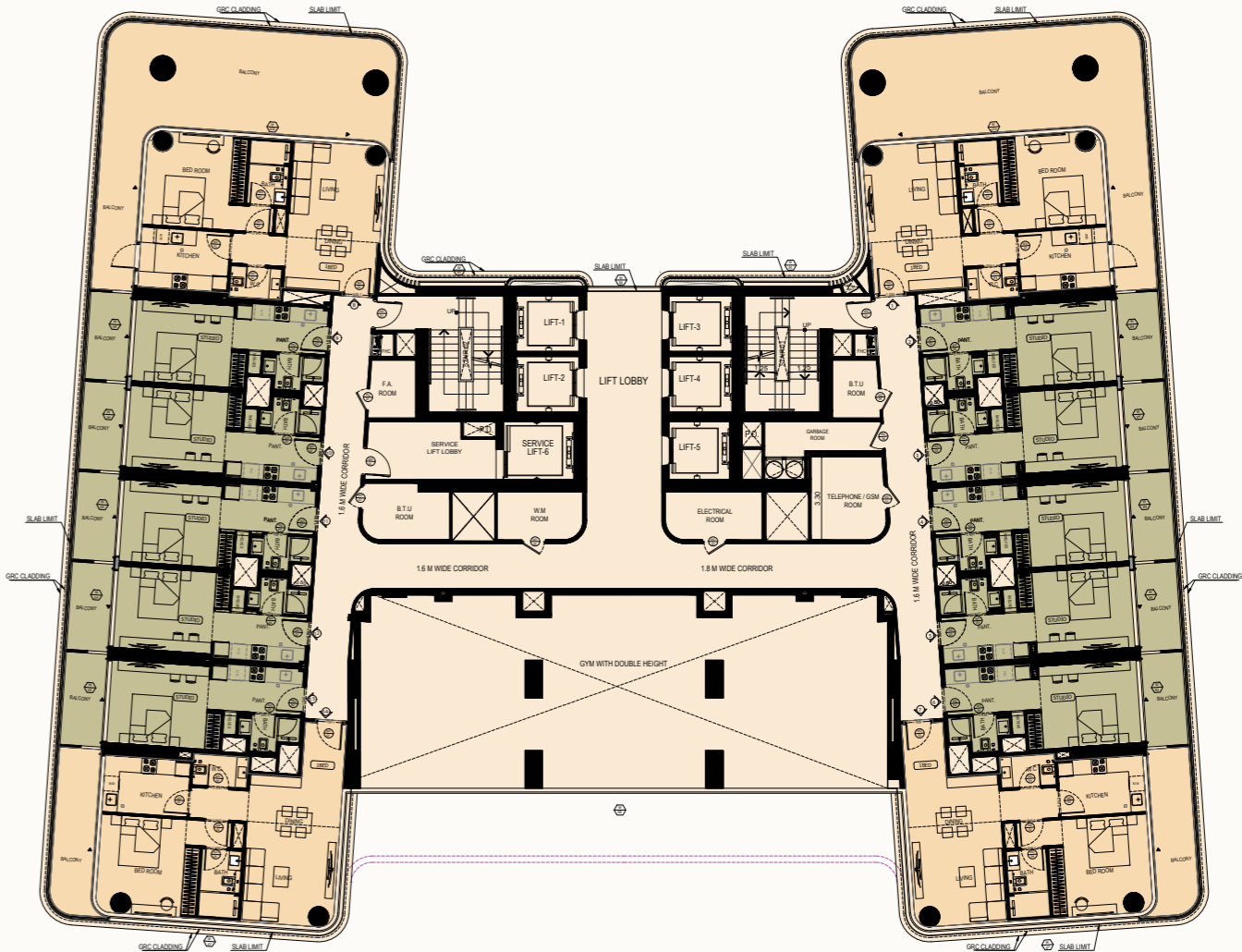
1<sup>st</sup> Floor Plan



- STUDIO
- 1 BEDROOM
- GYM

# Typical Floor Plan

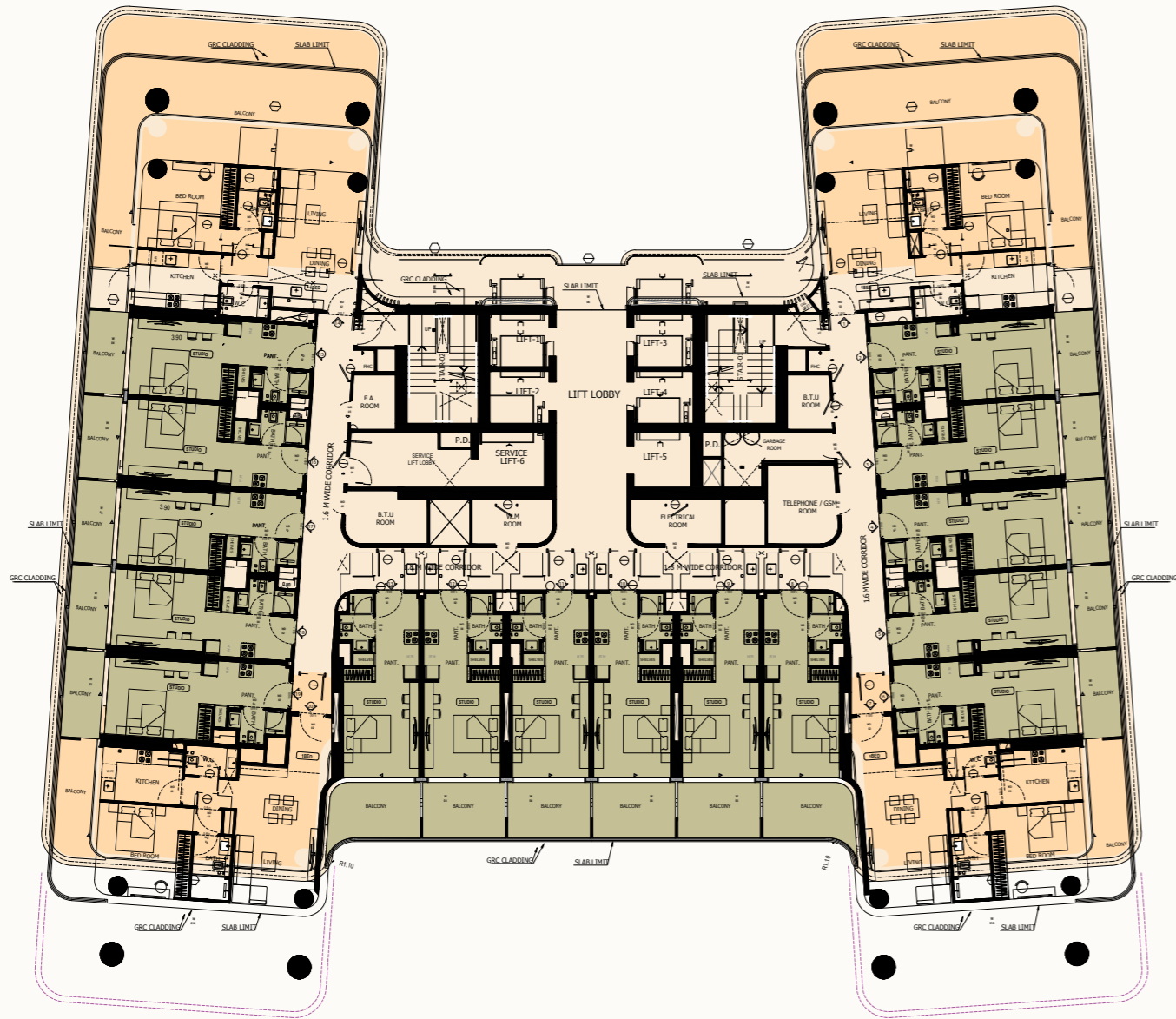
2<sup>nd</sup> Floor Plan



- STUDIO
- 1 BEDROOM

# Typical Floor Plan

3<sup>rd</sup> Floor Plan



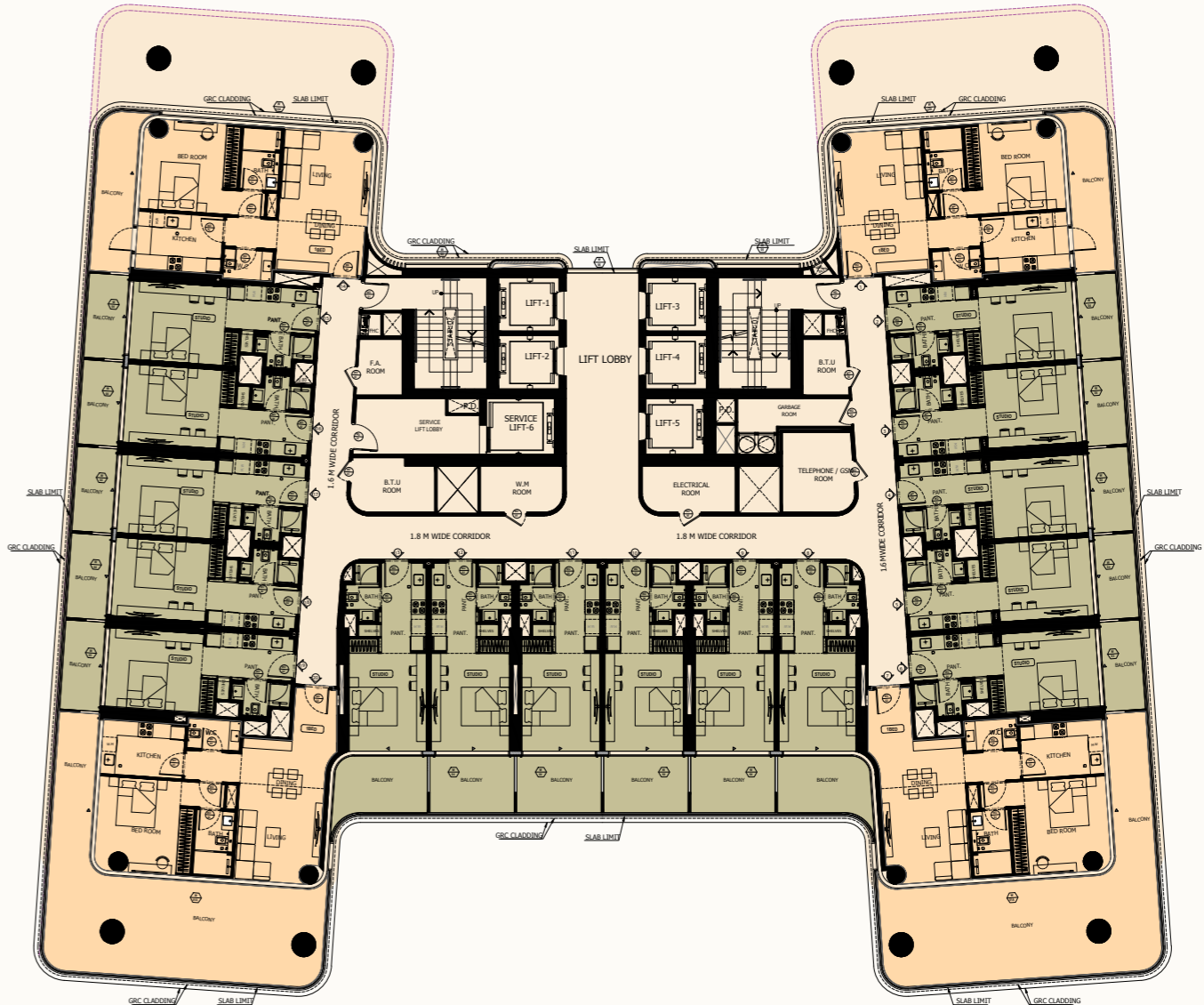
STUDIO



1 BEDROOM

# Typical Floor Plan

4<sup>th</sup> Floor Plan



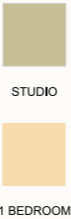
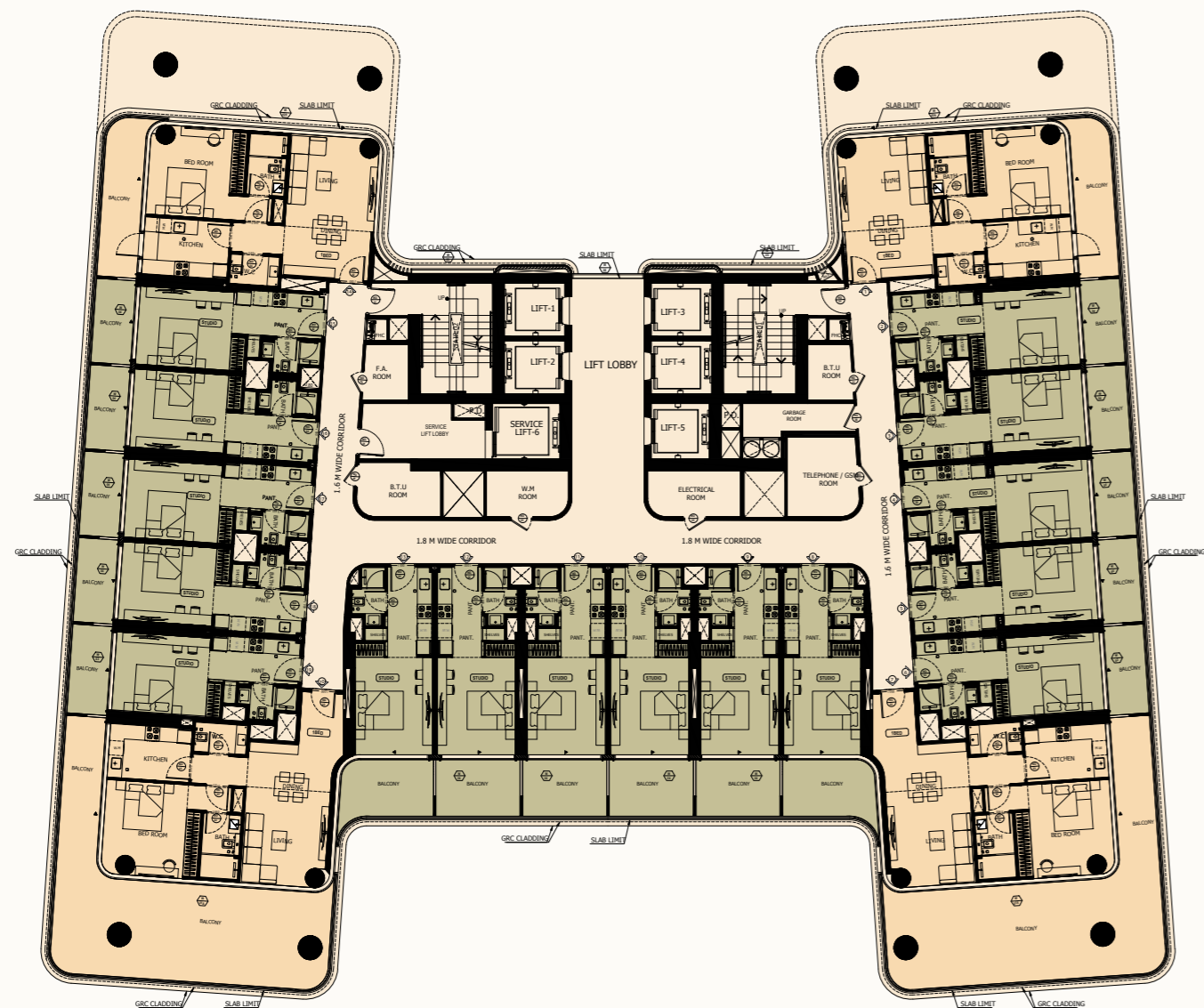
STUDIO



1 BEDROOM

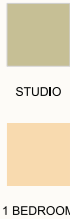
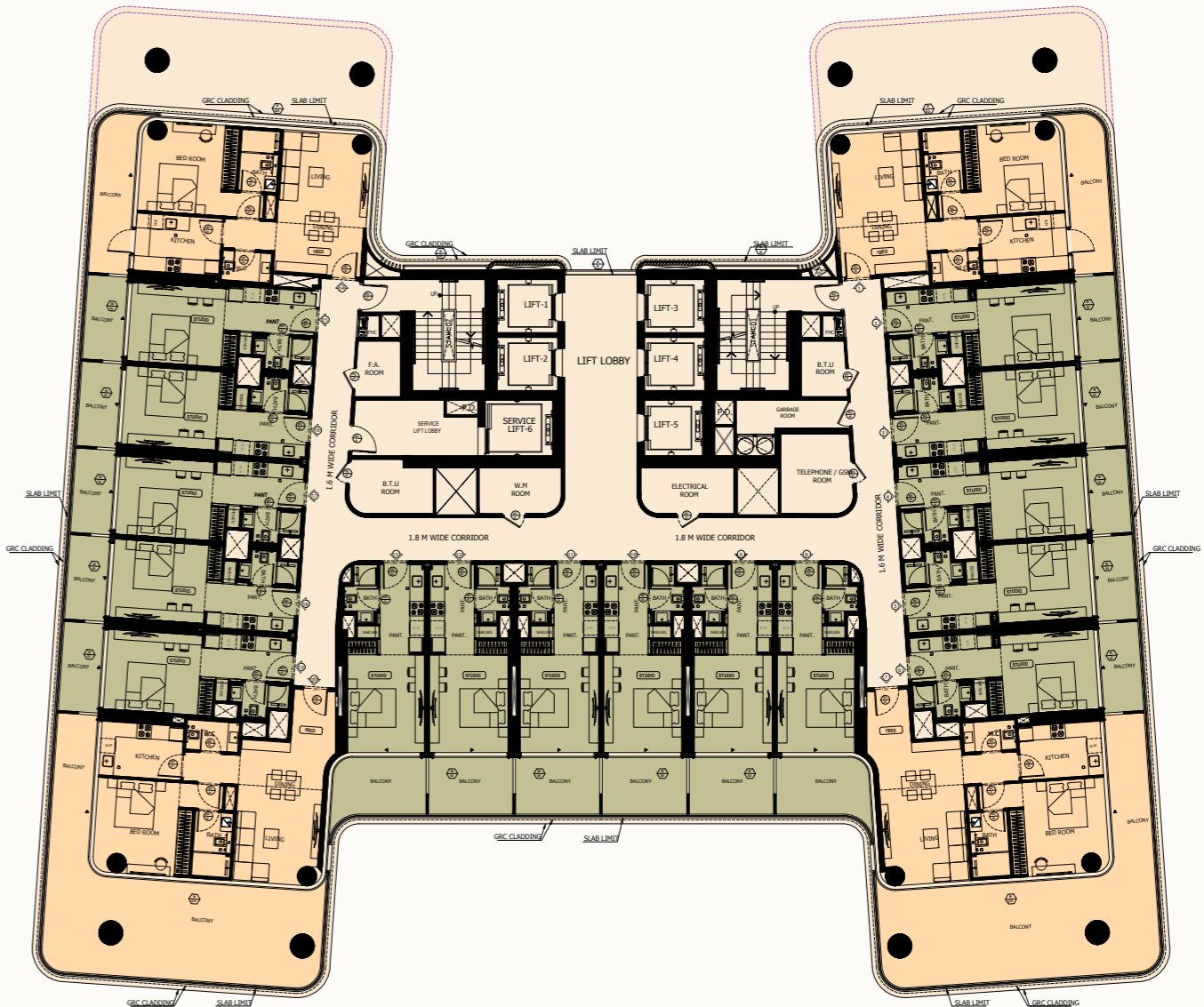
# Typical Floor Plan

5<sup>th</sup> Floor Plan



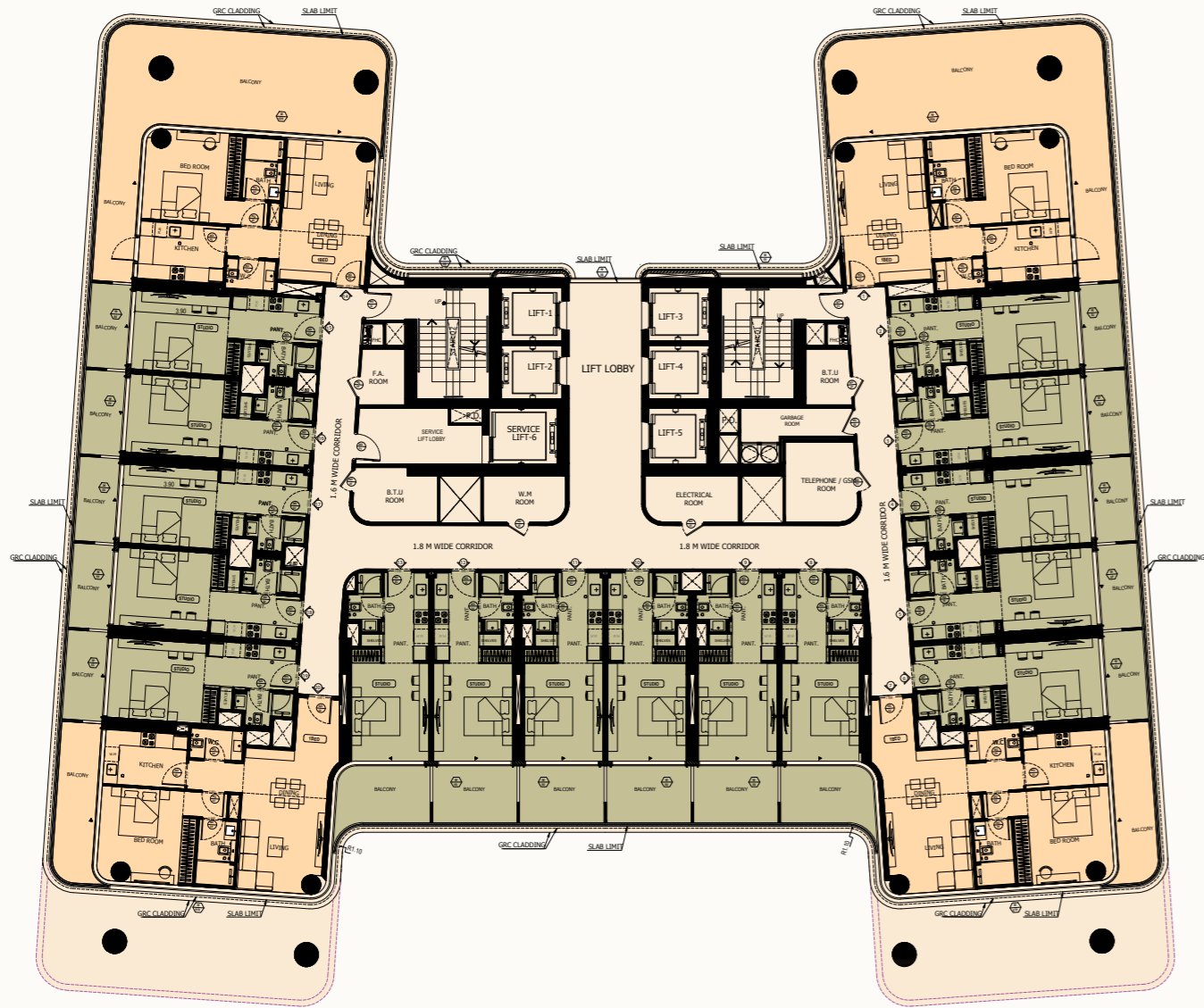
# Typical Floor Plan

6<sup>th</sup> Floor Plan



# Typical Floor Plan

7<sup>th</sup>, 8<sup>th</sup> & 9<sup>th</sup> Floor Plan



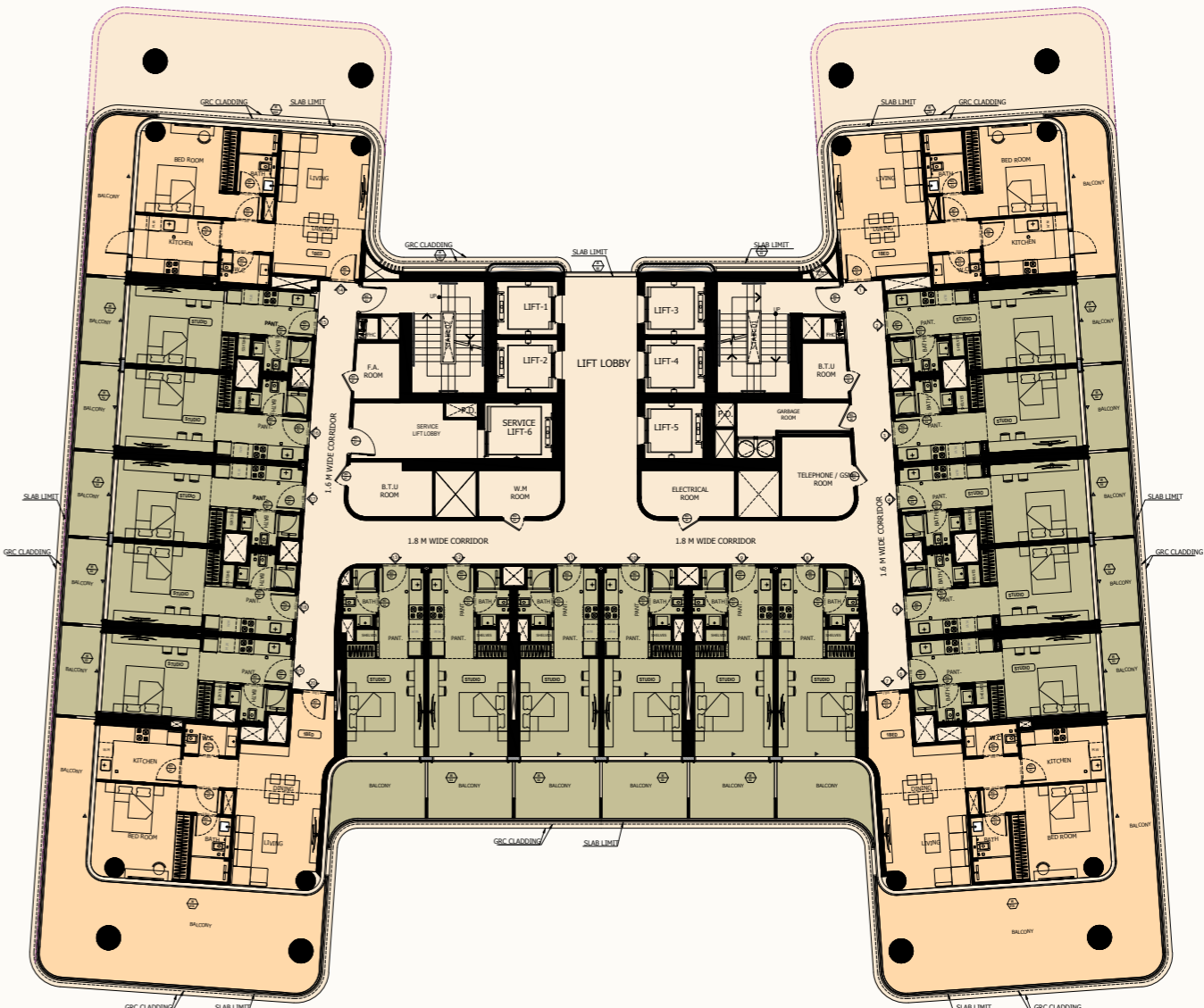
STUDIO



1 BEDROOM

# Typical Floor Plan

11<sup>th</sup> & 12<sup>th</sup> Floor Plan



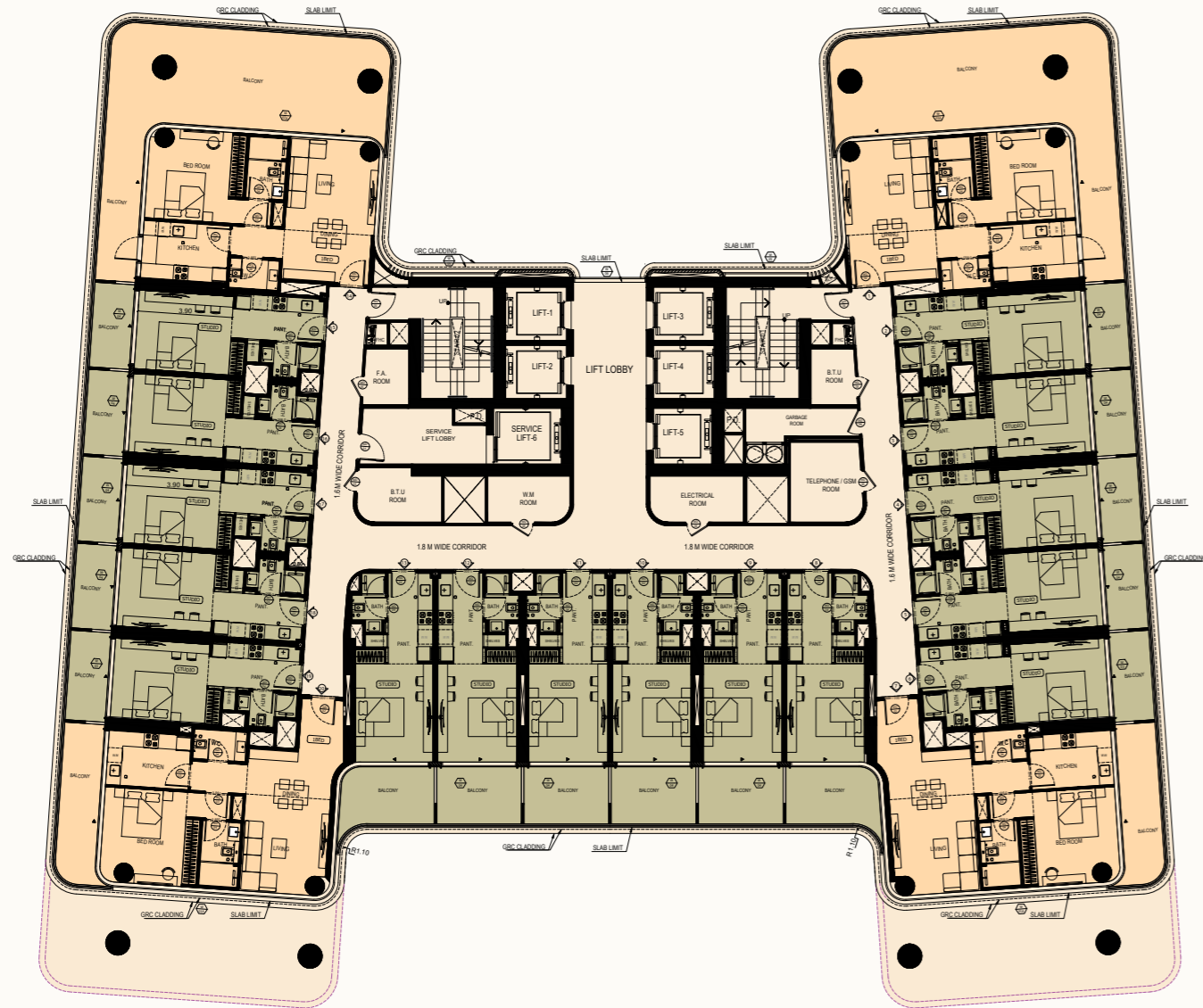
STUDIO



1 BEDROOM

# Typical Floor Plan

13<sup>th</sup>, 14<sup>th</sup> & 15<sup>th</sup> Floor Plan



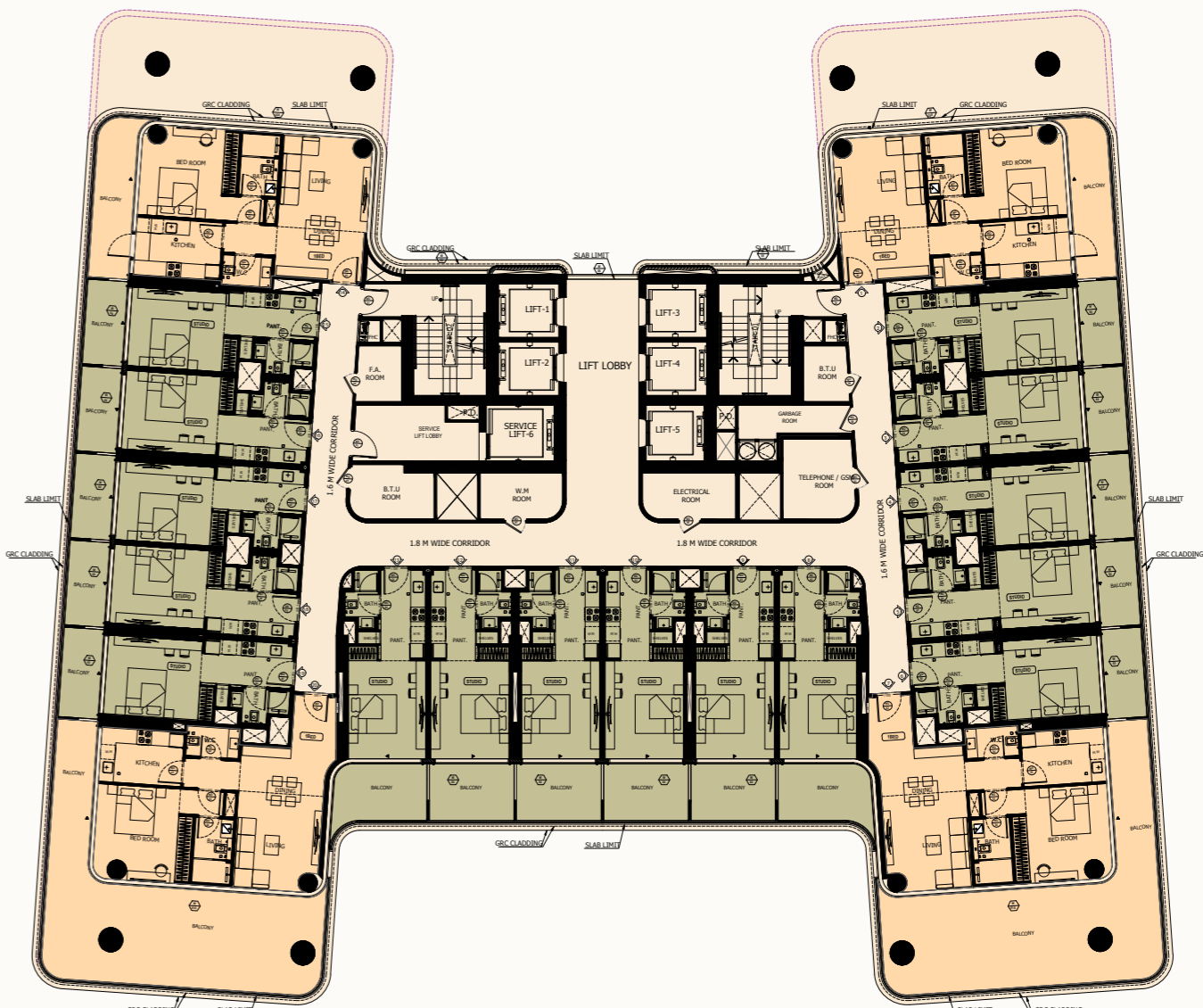
STUDIO



1 BEDROOM

# Typical Floor Plan

16<sup>th</sup> & 17<sup>th</sup> Floor Plan



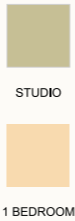
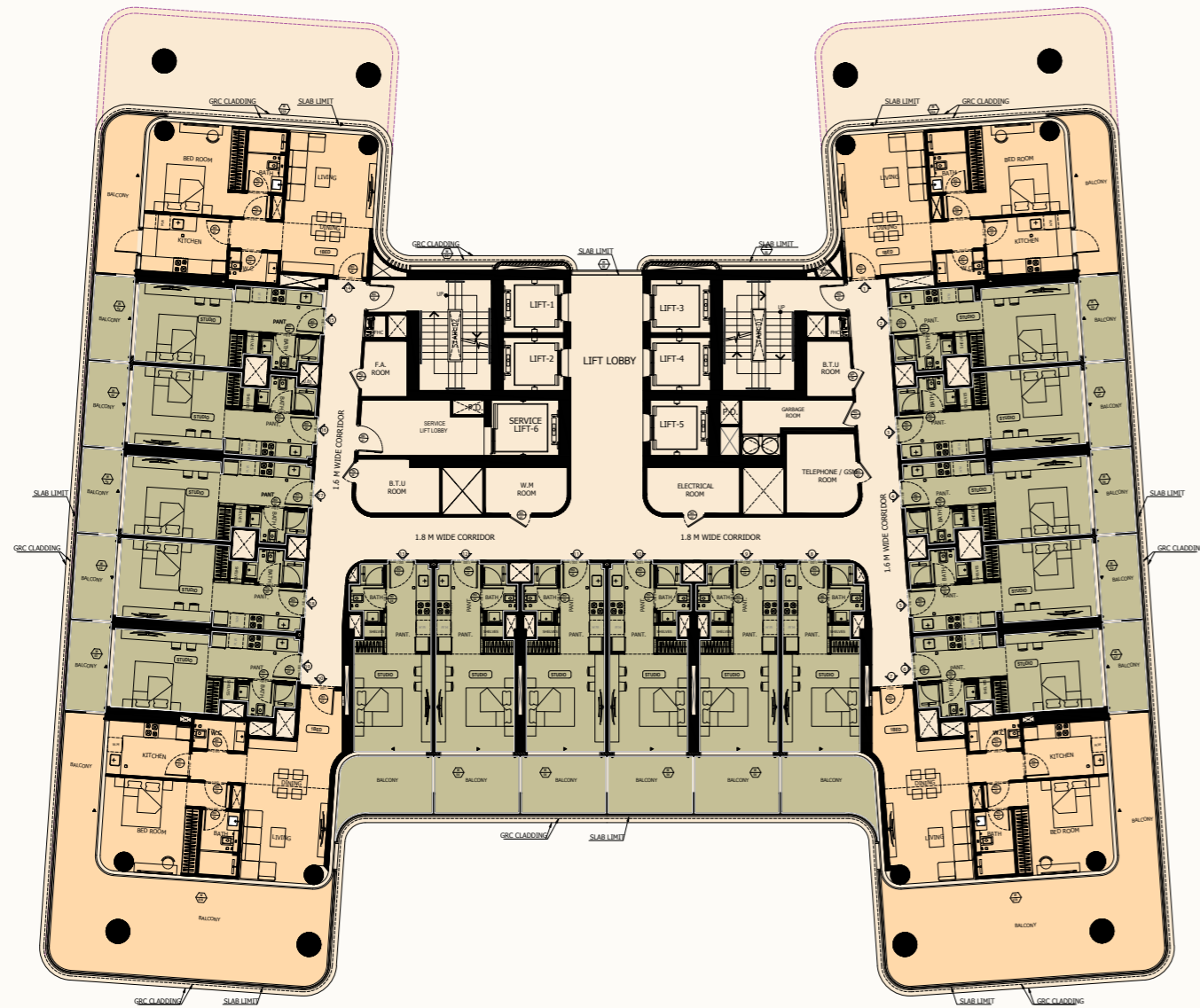
STUDIO



1 BEDROOM

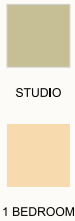
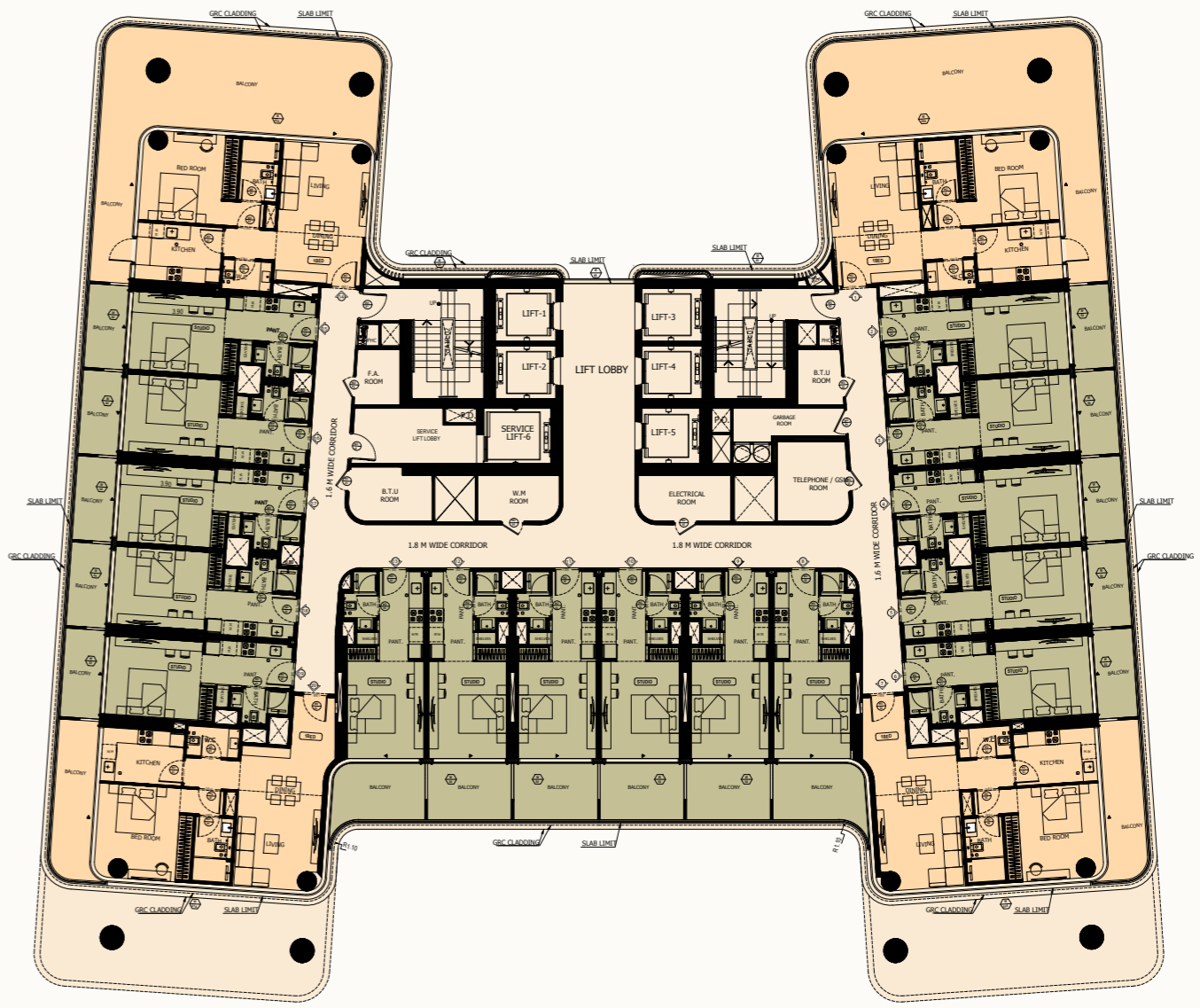
# Typical Floor Plan

18<sup>th</sup> Floor Plan



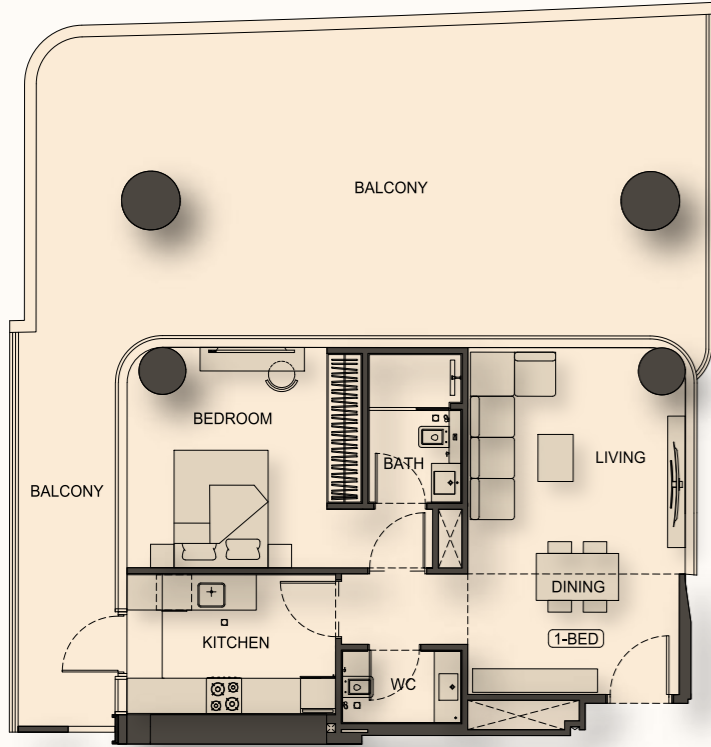
# Typical Floor Plan

19<sup>th</sup>, 20<sup>th</sup> & 21<sup>st</sup> Floor Plan



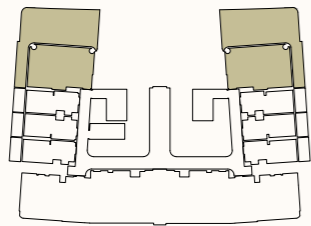
# 1 Bedroom

Type 01



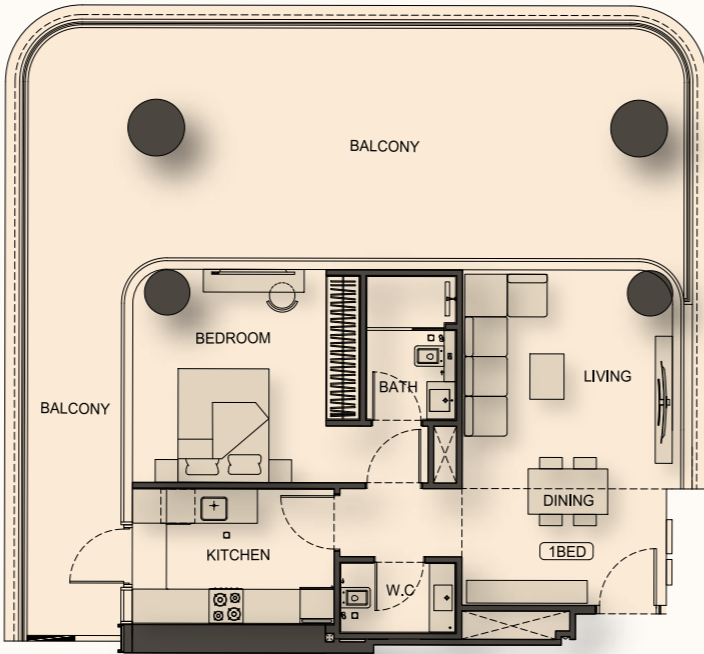
AREA	SQ.M	SQ.FT
SUITE AREA	61.79 m²	665.00 ft²
BALCONY AREA	74.18 m²	799.00 ft²
TOTAL UNIT AREA	135.97 m²	1464.00 ft²

FLAT DESIGN COMPONENTS	
M. BATH	4 m²
M. BEDROOM	16 m²
LIVING & DINING	22 m²
KITCHEN	9 m²
W.C	3 m²
CORRIDOR	3 m²



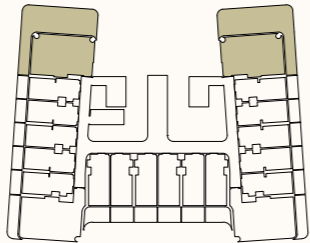
# 1 Bedroom

Type 02



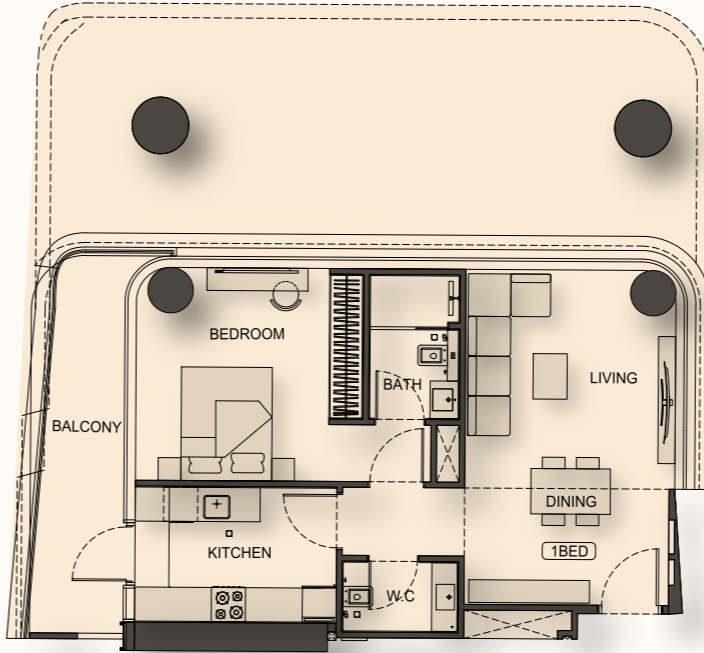
AREA	SQ.M	SQ.FT
SUITE AREA	61.79 m²	665.00 ft²
BALCONY AREA	60.76 m²	654.00 ft²
TOTAL UNIT AREA	122.55 m²	1319.00 ft²

FLAT DESIGN COMPONENTS	
M. BATH	4 m²
M. BEDROOM	16 m²
LIVING & DINING	22 m²
KITCHEN	9 m²
W.C	3 m²
CORRIDOR	3 m²



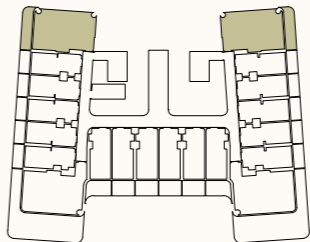
# 1 Bedroom

Type 02



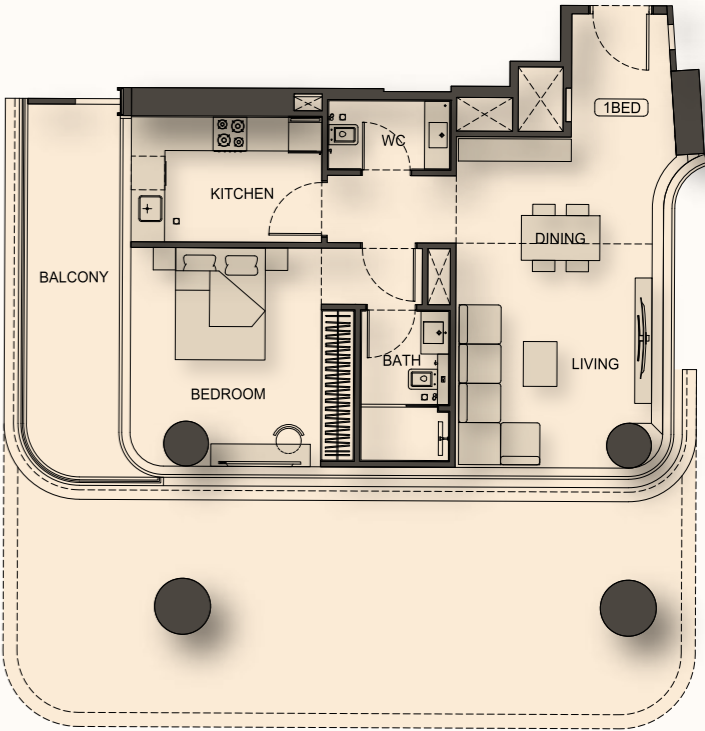
AREA	SQ.M	SQ.FT
SUITE AREA	61.78 m²	665.00 ft²
BALCONY AREA	11.95 m²	129.00 ft²
TOTAL UNIT AREA	73.73 m²	794.00 ft²

FLAT DESIGN COMPONENTS	
M. BATH	4 m²
M. BEDROOM	16 m²
LIVING & DINING	22 m²
KITCHEN	9 m²
W.C	3 m²
CORRIDOR	3 m²



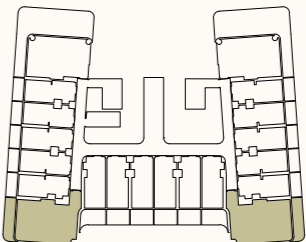
# 1 Bedroom

Type 03



AREA	SQ.M	SQ.FT
SUITE AREA	67.08 m²	722.00 ft²
BALCONY AREA	11.68 m²	126.00 ft²
TOTAL UNIT AREA	78.76 m²	848.00 ft²

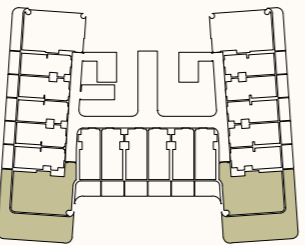
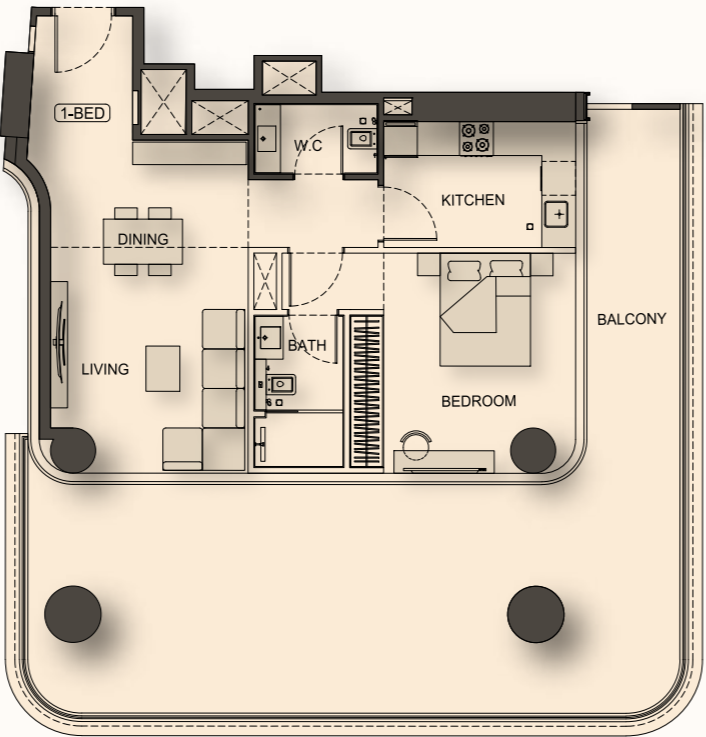
FLAT DESIGN COMPONENTS	
M. BATH	4 m²
M. BEDROOM	17 m²
LIVING & DINING	20 m²
KITCHEN	8 m²
W.C	3 m²
CORRIDOR	6 m²





# 1 Bedroom

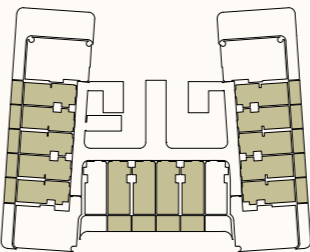
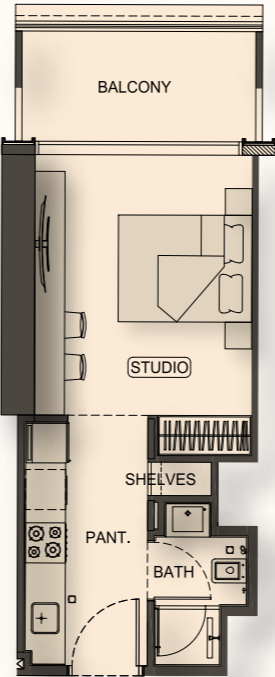
Type 05



AREA	SQ.M	SQ.FT
SUITE AREA	65.84 m²	709.00 ft²
BALCONY AREA	60.68 m²	653.00 ft²
TOTAL UNIT AREA	126.52 m²	1362.00 ft²
FLAT DESIGN COMPONENTS		
M. BATH		4 m²
M. BEDROOM		17 m²
LIVING & DINING		20 m²
KITCHEN		8 m²
W.C		3 m²
CORRIDOR		6 m²

# Studio

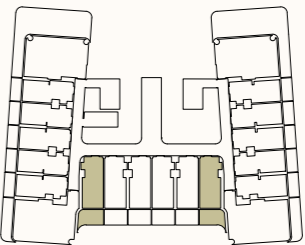
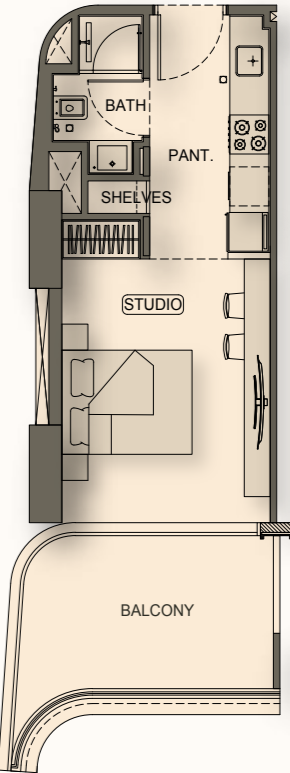
Type 01



AREA	SQ.M	SQ.FT
SUITE AREA	27.35 m²	294.00 ft²
BALCONY AREA	8.87 m²	96.00 ft²
TOTAL UNIT AREA	36.22 m²	390.00 ft²
FLAT DESIGN COMPONENTS		
STUDIO		13 m²
PANT.		7 m²
SHELVES		1 m²
BATH		3 m²

# Studio

Type 02



AREA	SQ.M	SQ.FT
SUITE AREA	27.23 m²	293.00 ft²
BALCONY AREA	10.96 m²	118.00 ft²
TOTAL UNIT AREA	38.19 m²	411.00 ft²
FLAT DESIGN COMPONENTS		
STUDIO		14 m²
PANT.		7 m²
SHELVES		1 m²
BATH		3 m²



# housebook

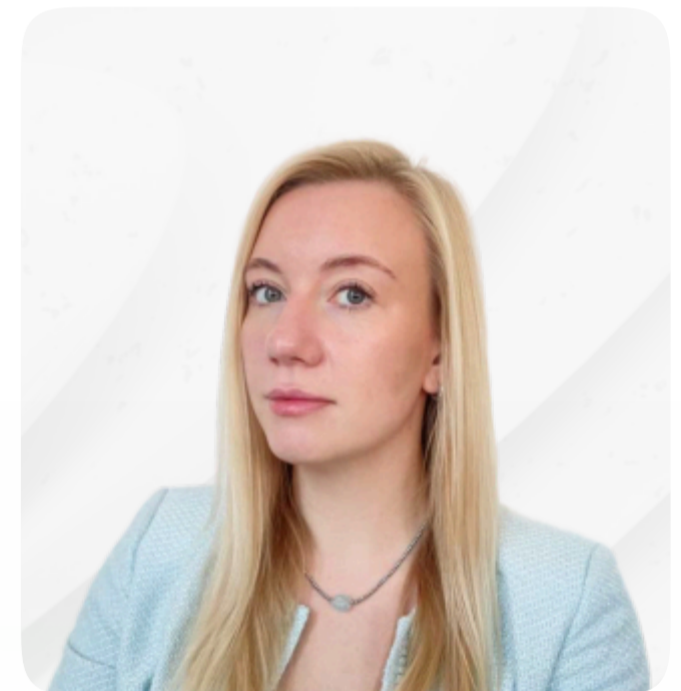
international real estate  
IT-platform for agents

Whatsapp contacts 

Partnership managers



Alevtina  
Kapustina



Svetlana  
Guseva

housebook.deals

partner@housebook.deals